

Actiphy Rapid Deploy

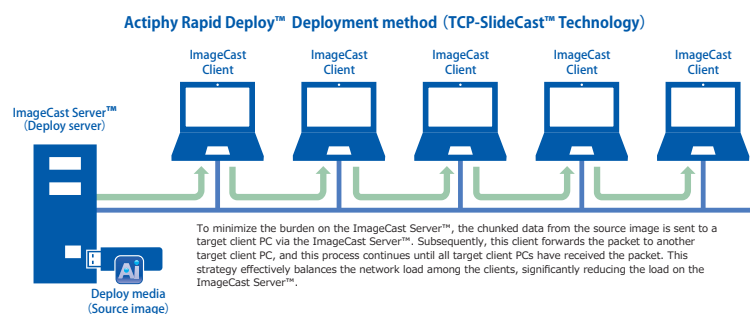
A network-based OS deployment tool.

What is Actiphy Rapid Deploy™

We designed Actiphy Rapid Deploy™ for VARs, OEMs, System Integrators, and System Administrators to deploy pre-configured computer systems to many client PCs. Actiphy Rapid Deploy™ frees you from the time-consuming, repetitive deployment of a source image of a preconfigured PC to many PCs.

Efficiently Deploy a Source Image to Client PCs via a Network

Our cutting-edge TCP-SlideCast™ technology revolutionizes multicast capabilities, enabling the efficient transfer of images to multiple client PCs with ease. At its core, TCP-SlideCast™ utilizes the principles of peer-to-peer (P2P) data transfer, a significant departure from traditional unicast methods. This innovative approach minimizes the strain on the server and network resources by distributing the load across multiple client PCs, resulting in unparalleled performance and scalability.



Advantages of Actiphy Rapid Deploy™

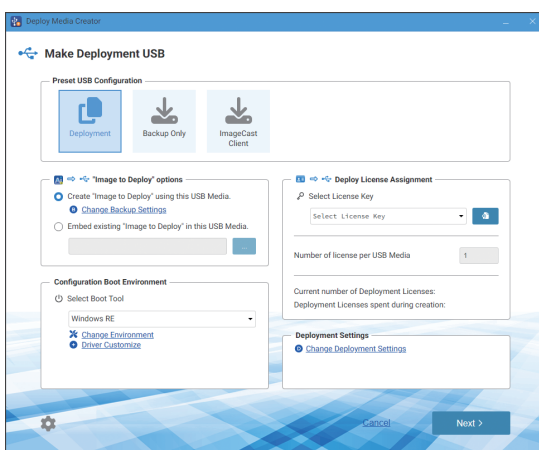
- Easy to provide the environment ready for constant use to deploy a source image to many PCs periodically.
- Provides a monitoring/management tool for multi-casting deployment of a source image to client PCs via a network.
- Reduced process time of creating a Deploy Media including a source image of a preconfigured PC.
- Enables the deployment of a source image to a standalone PC.

Actiphy Rapid Deploy™ Product Configuration

Actiphy Rapid Deploy™ is composed of Deploy Media Creator™ (equivalent to the predecessor product ActivelImage™ Deploy USB) and the newly developed ImageCast Server™.

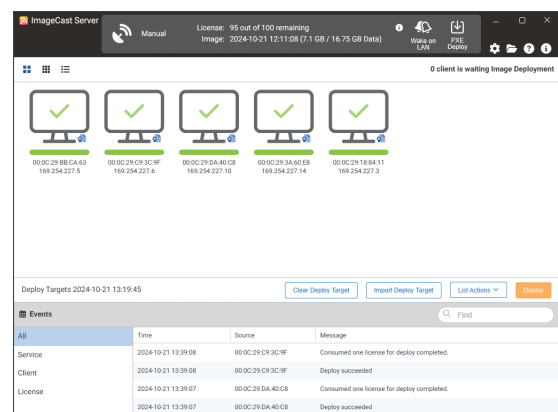
Deploy Media Creator™ :

Create source images and boot media to connect to ImageCast Server™ from the client PC (ImageCast client).



ImageCast Server™ :

ImageCast Server™ is a distribution server that enables multi-casting of a source image via a network, monitors and manages deployment task execution status, and tracks deployment progress. Using ImageCast Server™ allows quick deployment of a source image created in Deploy Media.

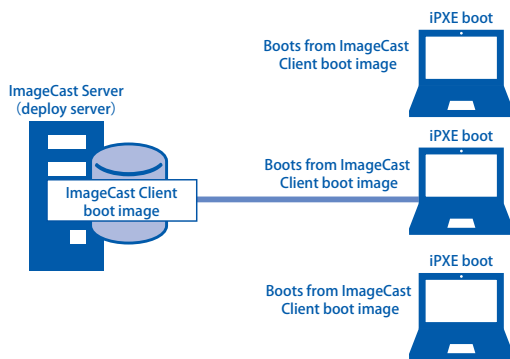


New Features

Fast iPXE Boot is supported

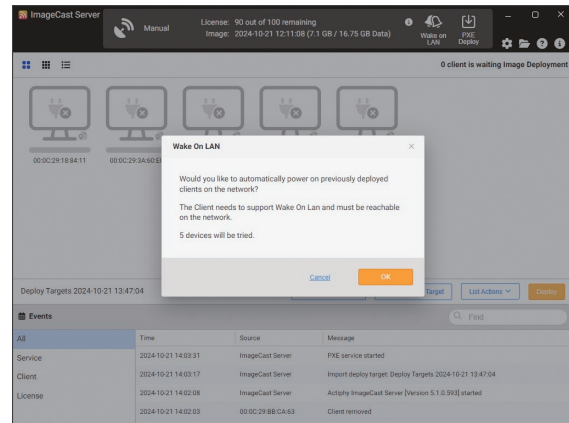
ImageCast Server, deployment Server, is now implemented with PXE server feature, the network boot system, enabling to boot up ImageCast client PCs from a boot image for clients over network. It also supports the new iPXE, extension of the traditional PXE feature. The new iPXE boot system is approximately 5 times* faster than the traditional PXE boot.

* According to our test results: iPXE boot time: About 30 seconds, PXE boot time: About 2 minutes and 30 seconds.



Retain deployed ImageCast client computer information

The information of ImageCast client computers is retained as the target list in the Deploy Media. Wake on LAN and Shutdown operations are supported to perform on ImageCast client computers. The deployed ImageCast client computer list can be imported to use for redeployment of a source file.

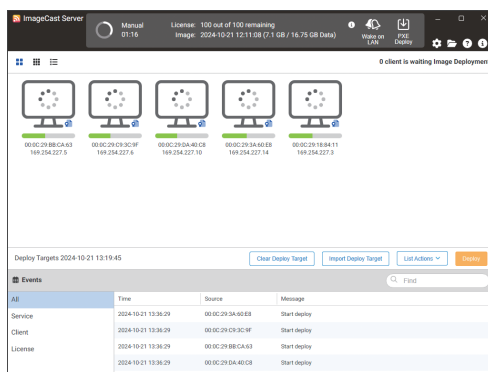


Main Features

Network Multicast Distribution

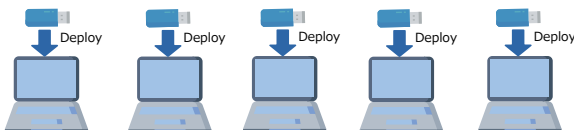
ImageCast Server™ enables the multicast distribution of a backup source image to client PCs over the network. To deploy, connect the Deploy USB media containing the source image to ImageCast Server™, then boot the target client PC from iPXE or ImageCast Client media.

Deploy Progress Status



One-Click Quick Deployment

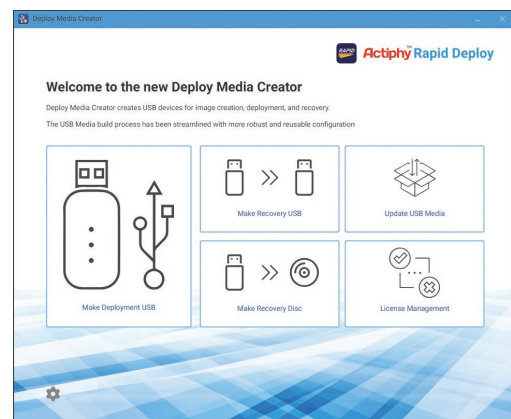
Boot the system from the Deploy USB media with an embedded source image. A single click quickly deploys the source image to target computers, eliminating the need for extensive IT expertise.



Deploy Media Creator™

Use Deploy Media Creator™ to create or update the Deploy USB media, ImageCast client media, and Restore Media on your PC. This tool streamlines the preparation of your media for deployment or restoration tasks.

Deploy Media Creator™ Menu



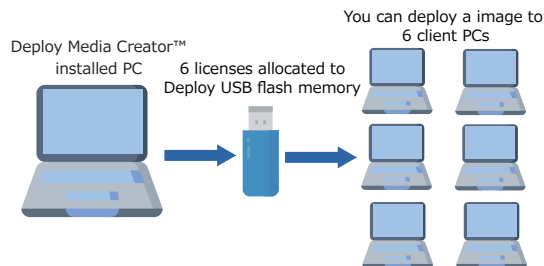
Windows RE-based Boot Environment

Building a boot environment for Deploy, Boot Client PC, or Restore USB media was previously required by installing the Windows ADK / Windows PE on the source PC. The latest Actiphy Rapid Deploy™ supports the Windows Recovery Environment (RE), preloaded on Windows operating systems. This Windows RE-based boot environment provides comprehensive driver support.

Deploy USB Media

Created Deploy USB media serves as the deployment source image. The number of licenses on the Deploy USB media must match or exceed the number of target PCs for deployment. For instance, a Deploy USB media with six licenses allows the deployment of the source image to six client PCs.

* 1 license is consumed for one deployment to one target client PC.



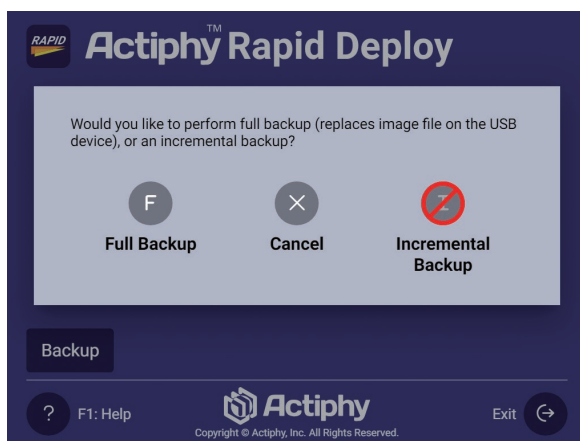
ImageCast Client Connection Completes



Quick Source Image Creation

To back up the source computer, connect the Deploy USB media and power it on. Booting up and clicking the [Full Backup] button backs up the source computer, saving the image on the Deploy USB media's second volume. This process bypasses manual setup, such as specifying destination folders or filenames. The source image is conveniently saved on the Deploy USB media for easy duplication or embedding into new Deploy USB media.

Full and Incremental Backup



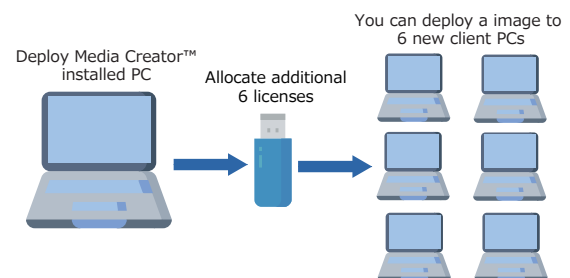
ImageCast Client Media Automation

ImageCast Client Media is specially designed for target client PCs to automate the booting and connection processes with an ImageCast Server™, the distribution server, eliminating IT engineers' need for manual intervention. It enables client PCs to boot and establish a secure connection with the ImageCast Server™ without requiring users to specify server details or enter credentials. Once the connection is established, the media can be safely ejected and conveniently utilized to connect additional client PCs, streamlining the imaging process and ensuring efficient deployment.

License Management and Expansion

Deploy USB media comes with licenses that allow the deployment of a source image to new client PCs on a one-license-per-PC basis. When all allocated licenses are used, additional licenses can be easily added via the Deploy Media Creator™ console, enabling continuous deployment to further client PCs.

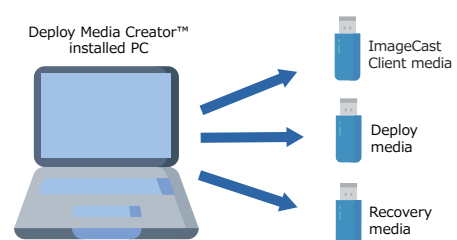
* 1 license is consumed for one deployment to one target client PC.



Enhanced USB Media Creation

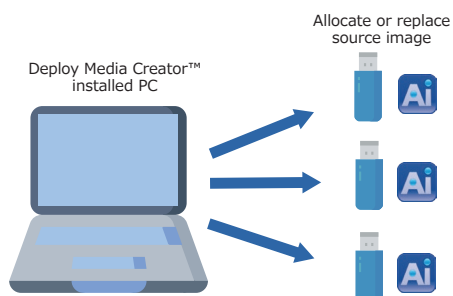
The latest software version supports the simultaneous creation of up to 30 ImageCast client media, Deployment of USB media, and Restoration of USB media. This feature significantly reduces processing time, especially on PCs with multiple USB slots.

* **Performance Insight:** Tests indicate that creating one ImageCast client media takes approximately 2 minutes, and creating three simultaneously takes about 2 minutes and 10 seconds, showcasing the efficiency of parallel processing.



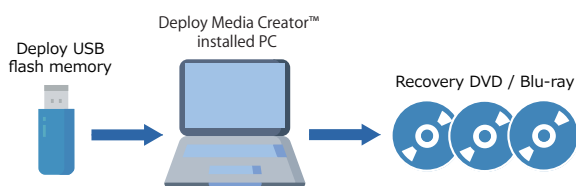
Easy Source Image Management

Adding or replacing a source image on Deploy USB media can be done without using up an additional license, facilitating effortless update and management of deployment images.



Versatile Restore Media Options

With Actiphy Rapid Deploy™ Plus, you can create Restore media embedded with a source image, ready for deployment. This allows personal computers to be shipped with an easy-to-use recovery tool (Restore USB media), enabling end-users to restore their PCs to factory settings with a single click. Unlike previous versions that supported only USB and DVD, the Plus version now also supports Blu-ray discs, offering more flexibility and enhancing computer security while potentially lowering costs.



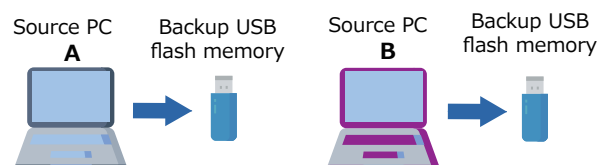
Restore USB Media with Renewed User Interface



Creating a Dedicated Boot Environment for Source Images

Actiphy Rapid Deploy™ introduces a streamlined approach to creating source images through its Backup USB media functionality. This feature enables IT engineers to efficiently distribute the workload of generating source images from multiple PCs using Backup USB media, facilitating the rapid deployment of these images across various client machines.

* The creation and utilization of Backup USB media do not require any additional licenses.



Simplifying License Management

The integration of a built-in License Manager significantly simplifies the process of managing multiple licenses. This tool allows for the easy addition of new licenses and provides a comprehensive system for managing these licenses according to specific customer needs.

By offering a centralized license management solution, Actiphy Rapid Deploy™ ensures that IT administrators can oversee license allocations and deployments more efficiently, enhancing overall deployment strategies and minimizing administrative overhead.

License Management Screen

