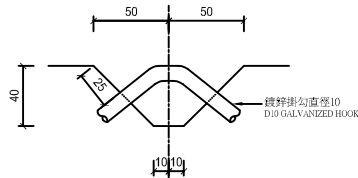
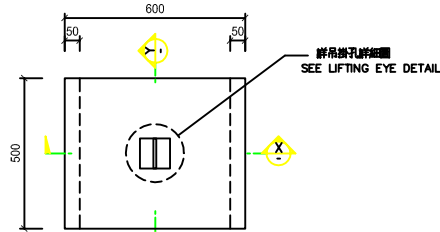


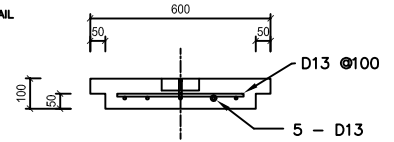
捷運蘆洲線電纜槽及蓋



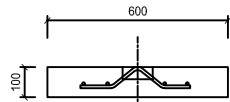
吊掛孔詳細圖
LIFTING EYE DETAIL
SCALE=1:2



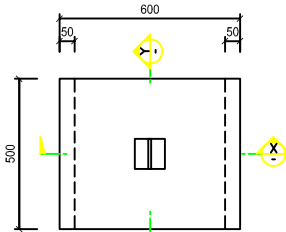
標準覆蓋
STANDARD COVER
SCALE=1:10



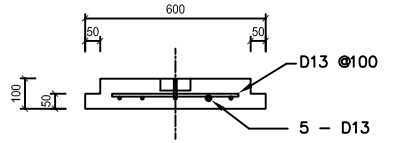
標準覆蓋
STANDARD COVER
SCALE=1:10



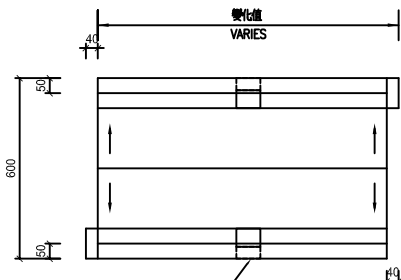
詳細圖
DETAIL
SCALE=1:10



重疊端覆蓋
LAPPED END COVER
SCALE=1:10

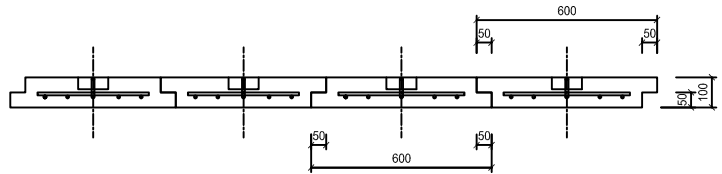


重疊端覆蓋
LAPPED END COVER
SCALE=1:10

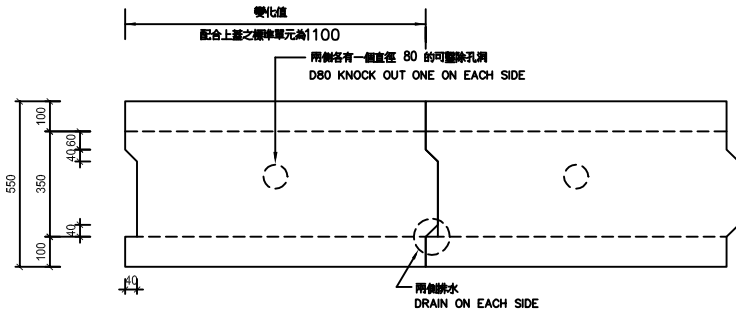


變化值
VARIES

平面圖
PLANE VIEW
SCALE=1:10



蓋板配置
COVER ARRANGEMENT
SCALE=1:10

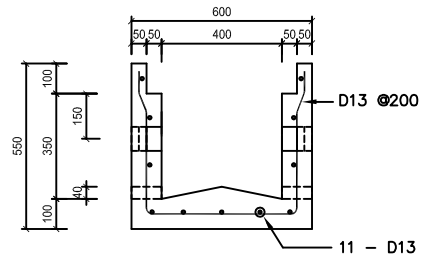


變化值
配合上蓋之標準單元為100

兩側各有一個直徑 80 的可鑿除孔洞
D80 KNOCK OUT ONE ON EACH SIDE

兩側排水
DRAIN ON EACH SIDE

側面圖
ELEVATION
SCALE=1:10



電纜槽標準斷面圖
CABLE TROUGH TYPICAL CROSS SECTION
SCALE=1:10