

**SANY**

**i-Cheon** **8** **CE**  
宜宗重機械有限公司

# SPECIFICATION



 **600 t**

 **95 m**

 **148.8 m**

台灣經銷商：宜宗重機械有限公司

宏江重機械企業有限公司

展場地址：台中市后里區三線路18-16號

展場電話：04-25590268 / 0975-193161

# SAC6000T8-8

SANY ALL TERRAIN CRANE

QUALITY CHANGES THE WORLD

[www.sanyglobal.com](http://www.sanyglobal.com)

QUALITY CHANGES THE WORLD

It is one of the core business units in SANY Group, specializing in the development and manufacturing of high-end wheel cranes, crawler cranes and tower cranes.

三一集團旗下核心事業部，從事高規格輪式起重機、履帶起重機、塔式起重機系列產品的研發製造。

# BETTER WORLD, BETTER SANY CRANE

# SANY CRANE

QUALITY CHANGES THE WORLD



## ▶ CONTENTS

### 目錄

Highlights 經挑亮點	▶ 04
Overall Dimensions 經挑尺寸	▶ 08
Technical Specification 經挑參數	▶ 09
Crane Introduction 經挑介紹	▶ 11
Counterweight Combinations 配重組合	▶ 15
Jib Assembly 副臂組合	▶ 16
On-Site Heavy-Duty Driving Solutions 重吊現場方案	▶ 17
Working Conditions 工况組合	▶ 18
T	21
TS	30
TJ	37
TEJ	39
TSJ	41
TESJ	43
TK	45
TSK	47
TL	49
TSL	51
TSA	53

# SAC600T8-8

SANY ALL TERRAIN CRANE



## 6 axle carrier

六橋全地面底盤

## Double engine system

雙發

## 8 section 95m boom

8節主臂95m

## 48m fixed jib (optional 60m hydraulic adjustable jib)

固定副臂48m(選配60m液壓變幅固定副臂)

## Self-assembly lattice superlift device

超起裝置自裝卸



SAC6000T8-8

## 84m luffing jib (optional)

塔式副臂84m(選配)

## 140t counterweight

140t配重

## 505 tires

505輪胎

## Heavy-duty axles

重載車橋

## New generation cab

新一代兩室

## 36m telescopic jib (optional)

36m伸縮副臂(選配)

**Strong lifting capacity****起重性能強**

Main boom - 8 section U shape profile, full extension 95m.  
 Fixed jib - variable lengths from 12m to 60m, offsetable at 0°/20°/40°.  
 Superlift device - self assembly and disassembly without the need of auxiliary crane. Lifting performance has significantly improved with the long boom section.  
 Luffing jib: multiple configurations from 18m to 84m, with a maximum lifting height of 148.8m.  
 Telescopic jib: 4-section 36m telescopic jib with adjustable angles of 2°, 15°, and 30°.

主起重臂：八節U型主臂，全伸臂長95m。  
 固定吊臂：12m-60m多種組合吊臂，0°/20°/40°可變位。  
 超起裝置：可無需輔助吊車自拆裝，長臂超起顯著提升起重性能。  
 俯臂：18m-84m多種組合，最大起升高度148.8m。  
 伸縮吊臂：4節36m伸縮吊臂，可變位2°、15°、30°變角。

**Excellent driving performance****行駛性能卓越**

Innovative 6-axle reinforced chassis, all-wheel steering and 4-axle drive, and a variety of steering and drive modes bring enhanced driving flexibility.  
 The new intelligent multi-mode hydro-pneumatic suspension functions real-time vehicle attitude monitoring, active lifting and variable damping adaptation, etc., making driving more comfortable and stable.  
 With a strong power and transmission system equipped with hydraulic torque converter and hydraulic retarder, the driving safety and smoothness are greatly improved.  
 Standard heavy-duty axles and 508 tires increase jobsite transfer efficiency significantly. Jobsite driving speed with superlift device reaches 40km/h, with boom and outriggers non-limit.

創新六軸加強型底架結構，全輪轉向，多種轉向及驅動模式，行駛適應能力強。  
 全新智能多模式油氣懸掛系統，實時監測車輛姿態，主動抬臂及變阻尼適應等功能，駕駛更舒適，行駛更穩定。  
 強勁動力及變速系統，配備液力變矩器及液力制動器，大大提升行駛安全性和舒適性。  
 标配重載車輪和608輪胎，顯著提升了工地轉移效率。操作超起裝置時行駛速度可達40km/h，且無臂架高度限制。

**SAC6000T8-8**  
 SANY ALL TERRAIN CRANE



## High efficiency and reliability

高效可靠

Multi-pump and multi-circuit hydraulic system, electro proportional and multi-level pressure control to realize speed grading and inching mobility, achieving better performance.

The new superlift stable tensioning control technology, one click auto tensioning and swing away/back, improves the operation efficiency by 20% and the lifting performance of the medium and long boom sections has significantly improved. The active adjustment technology against side-bending is applied on the superlift to ensure long boom operation safety.

Less operational constraints thanks to multi-mode superlift conditions, three outrigger span combinations, and three counterweight slewing radii, more suitable for working in constricted areas.

多泵、多回路液壓系統，電比例及多級壓力控制，實現速度分級和微動性優化，性能更強。

全新穩定張緊控制技術，一鍵自動張緊及收/展超起，作業效率提升20%，中樑每段起重性能大幅提升，超起還採用了主動側彎防傾技術，確保超起作業的安全性。

多模式超起工況，三種支腿跨距組合以及三種配重回轉半徑，減少了作業限制，更適合在狹小區域內施工。

## High level safety

安全可靠

The multifunctional wireless remote control system improves operation ease and safety.

The load moment indicator system with high precision, high stability and high intelligence is adopted to protect the lifting operation in an all-round way.

Equipped with adequate sensors for timely data feedback, real-time monitoring, the operator has access to the working data at any time.

多功能無線遙控系統，提高操作更加方便，操作更加安全。

採用高精度、高穩定性、高智能化的力矩限制器系統，全方位保護吊裝作業。

配置豐富的傳感器，及時反饋數據信息，實時監控，隨時掌握整機工作狀態。





# Technical Specification

## 整機參數

CATEGORY 類型	ITEM 項目	UNIT 單位	VALUE 參數	
CAPACITY 額定起重量	Max. lifting capacity 最大起重量	t	600	
POWER (CHASSIS) 整機參數(下車)	Engine model 發動機型號(排放標準)	-	Benz OM473 (Euro IIA) 賓士OM473 (歐三)	
	Max. engine power 發動機最大功率	kW/rpm	480/1600	
	Max. engine torque 發動機最大輸出扭矩	N·m/rpm	3100/1300	
POWER (SUPERSTRUCTURE) 整機參數(上車)	Engine model 發動機型號(排放標準)	-	Benz OM936LA E3A/1 賓士OM936LA E3A/1	
	Max. engine power 發動機最大功率	kW/rpm	205/2200	
	Max. engine torque 發動機最大輸出扭矩	N·m/rpm	1100/(1200-1600)	
DIMENSIONS 尺寸參數	Overall length 整機全長	mm	19592	
	Overall width 整機全寬	mm	3000	
	Overall height 整機全高	mm	4000	
TRAVEL 行駛參數	Max. travel speed 最大行駛速度	km/h	70	
	Min. steering radius 最小轉彎半徑	m	12	
	Wheel formula 車軸模式	-	12×8+12	
	Min. ground clearance 最小離地間距	mm	355	
	Approach angle 接近角	°	16	
	Departure angle 離去角	°	12	
	Max. gradeability 最大爬坡坡度	-	44%	
	Fuel consumption per 100km 每100公里油耗	L	≤112	
MAIN PERFORMANCE 主要性能參數	Working temperature range 使用溫度範圍	°C	-20~+40	
	Min. rated lifting radius 最小額定吊展度	m	2.5	
	Boom sections (Qty.) 臂節數	-	8	
	Boom shape 臂形狀	-	U shape U型	
	Max. lifting moment 最大起重力矩	Basic boom 基本臂	t·m	1500
		Basic boom 基本臂	m	16.4
		Full-extension boom 全伸臂	m	95
	Boom length 臂長	Max. combination of boom + fixed jib 最長臂+副臂	m	138.5 (78.5+60)
		Max. combination of boom + luffing jib 最長臂+變幅副臂	m	148.8 (57.8+7+84)
	Outrigger span (Longitudinal)×(Transverse) 支腿跨距(縱×橫)	m	9.4×9.6	
Jib offset 副臂安裝角度	°	0, 20, 40		
AIRCONDITIONER 空調	In operator's cab 上車空調	-	Heating & cooling 制冷、製熱	
	In driver's cab 下車空調	-	Heating & cooling 制冷、製熱	

# Technical Specification

## 整機參數



### Hook 吊鉤

Rated load 額定力		Number of sheaves 滑輪數量	Rope rate 倍率	Hook weight/kg 吊鉤重量
205	○	7	14	2600
160	●	5	10	1618
100	○	3	6	1027
50	○	1	2	645
16	○	1	1	700

● Standard 標配 ○ Optional 選配



### Operations 主要動作參數

Item 項目	Max. single rope lifting speed (empty load) 單繩速度 (空載)	Rope diameter/length 鋼絲繩直徑 / 長度	Max. single line pull 最大單繩拉力
Main winch 主卷揚	130m/min	Φ 24mm/640m	13.3t
Slewing speed 回轉速度		0-1.2r/min	
Full lifting/up/down time of boom 主臂起落時間		95s/95s	
Full extension time of boom 主臂全伸時間		1150s	
Outrigger jack 伸縮支腿	Extension 伸	50s	
	Retraction 收	50s	
Outrigger beam 水平支腿	Extension 伸	50s	
	Retraction 收	55s	

# Crane Introduction

## 整機介紹

### Driver's cab 駕駛室

- The new generation cab is a new type of steel structure independently developed by SANY, with excellent shock absorption and seating performance. With outward opening doors on both sides, the cab is equipped with driver's seat and passenger's seat with pneumatic suspension, adjustable steering wheel, large-field rearview mirrors, comfortable driver's seat with headrest, anti-fog fan, heating and cooling A/C, and stereo radio, etc., as well as complete control instruments and meters, so that is the driving will be more comfortable, safer, and more user-friendly.
- 駕駛室有三合一吊鉤裝置空調結構，減震件和坐椅優良，兩側外開式車門，配備無塵懸吊的駕駛座和乘客座，可調節方向盤，大視野後視鏡，配備後視鏡防霧功能，音響設備，冷暖空調，立體收音機等設施，駕駛儀表和儀表齊全，更加舒適、安全、人性化。

### Carrier frame 車架

- Designed and manufactured by SANY, the torsion-resistant box-type structure with optimized structure and low weight is welded by fine-grained high-strength steel plates. The outriggers are retracted in special fixed boxes, which are located between axle 2 and axle 3 and at the carrier frame tail, and equipped with front and rear lowering devices.
- 三一自研強韌型鋼箱體結構，結構優化，吊鉤裝置結構，鉸臂和高強度鋼板焊接製作，支腿收縮在特製固定箱中，支腿位於2軸和3軸之間以及車架尾部，並配備前後降鉤裝置。

### Chassis engine 底盤發動機

- Model: Mercedes Benz OM473, electronically controlled, in-line 6-cylinder, water-cooled, supercharged, intercooled, electronic injection diesel engine.
- Power: 480kW/1600rpm
- Torque: 3100N·m/1300rpm.
- Emission standard: Euro II/A.
- Fuel reservoir capacity approx. 600L.
- 型式：賓士OM473，電控，直列六缸，水冷式，帶中冷，廢氣再循環。
- 功率：480kW/1600rpm。
- 最大扭矩：3100N·m/1300rpm。
- 排放標準：歐二。
- 燃料箱容積：約600L。

### Transmission 變速箱

- ZF auto transmission, with integral hydraulic retarder for wear-free brake, features a wide range of speed ratio with 12 forward speeds and 2 reversing speeds, which is adaptable to slope climbing and high-speed traveling on public roads.
- ZF液力變速箱，帶有集成液力制動器，實現無磨損制動，具有廣泛的檔位範圍，具有12個前進檔和2個倒檔，適用於坡道爬升和公共道路上的高速行駛。

### Steering 轉向系統

- All new constant pressure and constant flow steering system featuring linear following without lag and precise steering angle. Three steering emergency systems available. The steering mode is adjusted according to the speed, from 30 km/h, the 3rd and 4th axes stop steering. From 60 km/h, the 5th and 6th axes stop steering.
- Six steering modes: 1) on-road driving (default), 2) all wheel steering, 3) crab steering, 4) reduced swing out steering, 5) independent rear axle steering, 6) independent front axle steering.
- 全新的恒壓恒流量智能轉向系統，實現無滯後跟隨和精確轉向角度。三種轉向緊急系統可供選擇。根據速度調整轉向模式，從30km/h開始，4軸不轉向，從60km/h開始5、6軸不轉向。
- 可分為六種轉向模式：1)公路行駛模式(默認模式)，2)全輪轉向模式，3)蟹形轉向模式，4)減擺擺尾轉向模式，5)獨立後橋轉向模式，6)獨立前橋轉向模式。

### Axle 車軸

- Handle high quality heavy-duty axles, with all axles steered, and axles 1, 3, 5, 6 are driven. Axles 1, 2 adopt hydraulic power steering system with linkage feedback, and axles 3-6 adopt electrohydraulic control steering, with assist for speed control and selectable special steering mode, for easy steering and flexible operation. Optional Kessler axle.
- 高品質重載車軸，全軸轉向，1、2、3、5、6軸驅動。1、2軸採用帶反饋的液壓動力轉向系統，3、4、5、6軸採用電液控制轉向系統，可選擇駕駛輔助的輔助及可選擇的特殊轉向模式，轉向輕便，操作靈活。

### Suspension system 懸掛系統

- Multi-mode height adjustable hydro-pneumatic suspension system with hydraulic lockout, which can realize five modes incl. suspension, rigid locking, auto leveling, whole vehicle rising and single point rising & lowering. It can conduct real-time monitoring of vehicle attitude, smart identifying of axle load, active rising and self-adaptability to tough terrains, ensuring smoothness and lateral stability during driving.
- 多模式高度可調液壓懸掛系統，懸掛高度可調，恆液壓懸掛卸載，整車懸起、單點懸起、自動調平、自動升平，並支持升平5種模式，具備動態調整懸掛控制，具備智能識別、主動提升和恆液壓由吊起等功能，控制更精準，行駛更穩定。

### Tires 輪胎

- 12 tires - 18.00R25 (505/95 R25).
- 12輪胎-18.00R25(505/95 R25)。

### Wheel formula 車輛格式

- 12\*8\*12.

### Outrigger 支腿

- H-type two-stage telescopic outriggers. The telescopic hydraulic system of outrigger adopts electric proportional control technology and is equipped with wireless remote control featuring high precision and easy operation, and has the function of automatic leveling.
- 液壓支腿採用雙級液壓伸縮支腿，支腿液壓系統採用電比例控制技術，並配備無線遙控，支腿伸縮過程可顯示所承受的載荷，並具有自動調平功能，駕駛精度高，操作簡便。

# Crane Introduction

## 整機介紹

CARRIER 下集

### Brake 製動系統

- Dual circuit, air brake, disc brakes available
- Service brake: air servo brakes on all wheels, dual circuits, all wheels equipped with disc brakes.
- Parking brake: actuated by pressure accumulators on axles 2 to 6.
- Assist brake: engine brake and exhaust brake, transmission hydraulic retarder brake.
- Electromagnetic Eddy Current Retarder Braking: The fourth axle is equipped with an electromagnetic retarder.
- 雙回路、空氣制、片式碟式制動器。
- 行車制動器 所有車輪均採用空氣制動器，雙回路制動系統，碟式制動器。
- 驻车制動器 由空氣蓄能器作用在第二至第六軸上。
- 輔助制動器 發動機上帶有發動機制動及排氣制動器，變速箱液壓液力緩速制動。
- 電渦流緩速制動 四軸安裝電渦流緩速器。

### Electrical system 電氣系統

- 24 VDC power supply Chassis power supply can be cut off, equipped with auto lighting system, actions of the vehicle such as throttle and outrigger control are realized by electrical control with easy and fast operation, the electrical system has strong detection, logic, operation and other capabilities, and has the functions of fault diagnosis, centralized display and self-protection.
- The chassis adopts CAN bus system, which is provided with fast, stable and accurate data transmission, multi-functional centralized display system, high protection grade of IP65, low power consumption with a maximum of 5W, with four function keys provided in the user interface, LCD is used for display adjustable for contrast.
- 採用24V直流電源，可與斷下車電氣系統，配備自動照明系統，車輛的動作，如油门、支腿控制等由電氣控制實現，控制作更便、快捷，電氣系統有優良的檢測、邏輯、運行等能力，具有故障診斷、集中顯示及自我保護功能。
- 底盤採用CAN總線系統，具有數據快速、穩定、準確等優點，多功能的集中顯示系統，功耗等很低，IP65，功率消耗小，最大僅有5w，在用戶界面提供四個功能鍵，顯示採用LCD液晶，對比度可調整。

# Crane Introduction

## 整機介紹

### Operator's cab 操縱室

- New generation cab, 0-20° tilttable. It adopts corrosion resistant steel plate, full coverage softened interior, panoramic sunroof, adjustable seat, making the operation comfortable and easy. Main and auxiliary touch screens are applied, realizing perfect combination of main console and operation display system. All the operation data are displayed clearly. The screen features adjustable viewing angle, multi-image and multi-angle monitoring and one-key operation. The main boom, luffing jib and superlift which are equipped with cameras for centralized monitoring. Man-machine interaction is responsive and easy. Heating and cooling A/C is provided.
- 新一代驾驶室, 0-20°可傾, 採用防腐蝕鋼板, 內飾全面軟化, 配有全景天窗, 可傾座椅, 窗保護內外遮陽板, 平、遙、觸摸屏系用, 實時干涉遙控操作系統的完美結合, 所有操作數據集中顯示, 屏幕具有可調視角, 多圖像和多角度監控功能, 並支持一鍵操作, 平駕、遙控駕駛和起重數據視頻集中監控, 人機互動響應靈敏, 操作簡便, 配備冷暖空調。

### Engine 發動機

- Model: Benz OM906LA E3A/I, electronically controlled, in-line six-cylinder, watercooled, supercharged intercooled diesel engine.
- Power: 205kW / 2200rpm.
- Torque: 1100Nm / (1200-1600)rpm.
- Emission standard: Euro III.
- Fuel reservoir capacity: 330L.
- 型式: 賓士OM906LA E3A/I, 電控, 內置六缸, 水冷式, 直噴中冷, 柴油發動機。
- 功率: 205kW/2200rpm.
- 最大扭距: 1100Nm/1200-1600rpm.
- 排放標準: 歐三。
- 燃料箱有效容量: 330L。

### Boom & telescoping system 伸縮系統

- Main boom: It is composed of 1 base boom and 7 telescopic sections. It is made of fine-grained high-strength steel plates by bending and welding with U shape profile. It has good buckling resistance, the single cylinder automatic pinning system is adopted, and a double-acting cylinder can control the extension and retraction of all booms to achieve a combination of multiple boom lengths, the basic boom length is 16.4m and the full extension boom length is 95m.
- Fixed jib: There are the adapter, jib head, 6m and 12m (large (small)) cross-area inserts, which can realize the jib length combination of 12m-60m. The offset can be changed according to the actual needs of working conditions to improve the automation level, reduce the labor intensity and improve the work efficiency.
- Luffing jib: variable combinations of 18m-84m, significantly enhancing lifting capabilities and range.
- Superlift device: It's arranged on the left and right sides of the head of the base boom, and independent from each other, and it can realize assembly and disassembly without auxiliary crane. The superlift device can greatly improve the stress state of the boom, avoid side bending and reduce the downward deflection deformation of the boom, so that the deflection in the long boom state can be reduced by 20%-30% and the lifting capacity can be improved by more than 200%.
- 吊起裝置: 由兩基本臂和吊杆伸縮組成, 採用細螺絲鋼板折彎, 焊接製成, 採用U形截面, 抗屈曲性能好, 採用單缸自動鎖緊系統, 一個操作用油缸可以控制所有用油的伸縮, 達到多種臂長組合, 基本臂長16.4m, 全伸臂長95m。
- 固定吊臂: 配備伸縮插, 全臂臂長, 6m及12m(小)截面標準吊, 可以實現12m-60m的臂長組合, 可以根據工地的實際需要而變化角度, 提高了自動化水平, 減輕了勞動強度, 提高了工作效率。
- 起吊裝置: 可以實現6m-84m的臂長組合, 大大提升起重能力和作業高度。
- 超起裝置: 布置於基本臂頂端左右兩側, 左右獨立, 無需輔助吊即可實現自伸縮, 超起裝置和吊杆伸縮的壓力與伸縮力大減小, 減少伸縮, 減小起重臂的向下偏擺, 起重臂在長臂狀態下偏擺可減小20%-30%, 起重能力提升200%以上。

### Slewing platform 轉臺結構

- Designed and manufactured by SANY, the turntable made by fine-grained high-strength steel has a better structure.
- 三一自研設計, 結構更優化, 由細晶高強鋼製成。

### Hoist 起升機構

- Main hoist: Planetary gear reducer driven by hydraulic motor and special rope groove winch drum, with a built-in brake.
- Wire rope lock: The end of the wire rope is cast and directly installed in the lock sleeve, which improves the reeving speed.
- Specification of wire rope: φ24-2160 non-rotating wire rope
- Max. single rope speed (at the 4th layer): approx. 130m/min.
- 液壓馬達驅動的行星齒輪減速器和專用輪槽卷筒, 內置制動器。
- 鋼絲繩鎖具: 採用高強鋼製成, 鋼絲繩端環, 直接安裝於鎖套內, 提高了起重效率的更動速度, 方便快裝。
- 鋼絲繩規格: φ24-2160, 防扭鋼絲繩。
- 最大單繩速度(第四層): 約130m/min。

### Luffing system 變幅系統

- Double cylinders are adopted, the hydraulic system adopts dual-pump converging open hydraulic circuit, and the combination of electric proportional control, active luffing and passive luffing down can realize fast luffing at large elevation and stable slow luffing at small elevation.
- Luffing angle: 0°-84°.
- 雙液缸驱动变幅, 变幅角度0°-84°, 液壓系統採用雙泵合流開式液壓回路, 採用電比例控制, 動力變幅和自重變幅相結合, 可實現大角度快速變幅, 小角度穩定慢速變幅。

### Slewing 回轉系統

- It is composed of fixed displacement motor and slewing reducer with mature technology and widely used on wheel cranes, at the same time, it adopts external meshing with slewing bearing to realize 360° full-slewing and stepless speed regulation, the slewing hydraulic system adopts a closed system, which can not only avoid the throttling loss of the open system, but also make the system have high efficiency, electric proportional brake pedal is used to realize emergency braking.
- 由結構成熟, 並在汽車起重機上廣泛應用的定量馬達和回轉減速機組成, 回轉與回轉支承採用外啮合形式, 可實現360°全回轉, 回轉速度可達0-130rpm, 無級制動, 回轉液壓系統採用閉式系統, 目前取消液壓閉式系統的誤銷誤裝, 又使系統具有較高的效率, 電比例制動踏板, 可實現緊急制動。

### Counterweight 配重

- Combined variable counterweights from 0t to 140t can meet the needs of different working conditions, maximize the performance of structural parts, achieve remote removal and installation, and a good inching-movement.
- 組合式可變十噸重可實現0-140t多種組合方式, 可滿足不同工地的需求, 最大程度降低結構件件重, 可重吊拆裝及安裝, 制動性好。

# Crane Introduction

## 整機介紹

### Hydraulics 液壓系統

- The open and closed independent hydraulic system of the superstructure has the characteristics of high load efficiency, heavy load low speed, low load high speed and high action flexibility. The luffing and telescopic system adopts an open system composed of an electro proportional pump and a self-made main valve, which has four pressure levels for selection, and different pressure levels are used for different actions, combined with the displacement of the electric proportional pump, so as to realize energy-saving and safe luffing and telescopic actions. The hoist system adopts a closed system to avoid the throttling loss of open system, so that the system has high efficiency and wide speed regulation range, the slewing system is a closed system, which can avoid the throttling loss of open system, so that the system has high efficiency and good inching-movement performance, in addition to the functions of superstructure slewing, boom luffing, extension and retraction, and main and auxiliary hoist lifting, it can also realize the functions of counterweight lifting, operator's cab rotation, and turntable locking.
- The pump, piston motor and balanced valve adopt high-quality components with high reliability, the electric proportional variable displacement piston pump can adjust the displacement of the oil pump in real time, realizing high-precision flow control and minimize energy waste, the dual-pump converging/shunting main valve independently developed by SANY has high converging efficiency of single action dual-pump and high shunting controllability of combined action dual-pump.
- The hydraulic system with passive luffing down compensation is adopted, which has good luffing down inching-movement and stability.
- The main boom adopts a single cylinder pin telescopic system.
- 開關式相結合的半車液壓系統，具有負載適宜、轉動靈活、動作效率高的特點。其中變幅伸縮系統採用電比例控制與自製平衡閥組成的開式系統，具有壓力一級穩定以及無衝擊作動、不同動作不同的壓力響應、配合電比例流量閥，從而實現精確、安全的變幅伸縮動作。起升卷揚系統採用閉式系統，不僅能保證動作靈活起吊，還能實現效率高、制動和回零、回轉採用閉式系統，系統給付力矩無延時，動作響應迅速且動作好，除可實現上車回轉、吊臂旋轉、伸縮、平衡缸起落功能外，還可實現主車變升、撐杆立起等，保證操作的安全。
- 液壓缸、柱塞馬達及平衡閥等關鍵元件均採用第一級品牌，品質好，可靠性能高。開、閉式電比例、實時調節流量，實現高精度流量控制，最大允減少能量浪費。五十噸級的變流量/分六平衡，液壓系統壓力與流量無時差以及互不影響的雙目標控制，單動作變流量效率最高，組合動作變流量效率及平衡性好。變幅採用自製液壓平衡閥與液壓系統，變幅功能好，干擾性好。平衡伸縮採用單缸起落式快速伸縮系統。

### Control system 控制系統

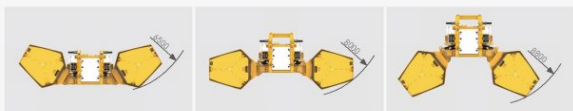
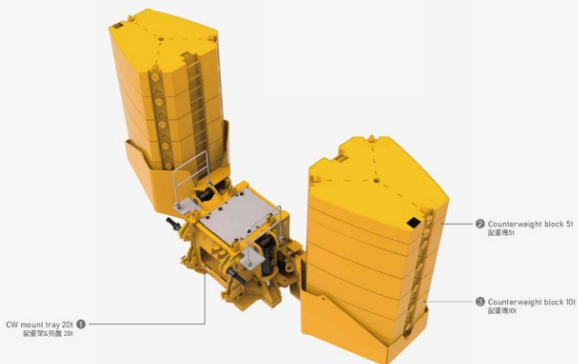
- Powered by 24 V DC, it adopts IFM controller, cable wiring, CAN-BUS control network, and combines with conventional electrical to realize the logic control and electrical proportional control functions of the system.
- It has the functions of system real-time monitoring and automatic fault diagnosis.
- Lifting, slewing and luffing are controlled by two auto resettable multidirectional electric proportional joystick, counterweight lifting, operator's cab tilting and turntable locking are all controlled by keys on the control panel.
- The display is connected with the controller by CAN bus, and its main functions include digital adjustment and display of electric proportional control parameters, fault code display of electric proportional system and real-time detection data display of hydraulic system.
- 由24V直流電源供電，採用德製IFM控制器，電纜布線，CAN-BUS總線控制網絡，與常規電氣相結合，完成系統的邏輯控制與電比例控制功能。
- 具有系統即時監控和故障診斷功能。
- 起升、回轉、變幅由兩個可自動復位多方向電比例手柄控制，平衡由腳踏式將繩鎖被鎖死，主車變升、撐杆立起、轉盤鎖止均在操作面板按鈕控制。
- 顯示器由CAN總線與控制器聯接，可動態顯示電比例控制參數的數字化測試和顯示，電比例系統的故障代碼顯示，液壓系統即時測量數據的顯示。

### Safety equipment 安全裝置

- A method of analytical mechanics is adopted and a load moment indicator calculation system based on the lifting mechanics model is established. Through online empty-load calibration, the lifting accuracy can reach  $\pm 3\%$ .
- The hydraulic system is equipped with hydraulic balance valve, relief valve, two-way hydraulic lock, etc. to realize the stability and reliability of the hydraulic system.
- The boom and luffing jib hoists are equipped with 3rd wrap indicators to prevent over-hoist-down of the wire rope.
- The boom head and jib head are equipped with A2B switch to prevent the wire rope from over winding.
- The boom head is equipped with an anemometer to detect whether the wind speed exceeds the allowable range.
- Superlift device retracting and releasing rope tension protection, fixed jib installation and lifting protection.
- 採用分析力學方法，建立了基於吊重力學模型的力矩限制計算系統，通過在線空載標定，吊重準確達到 $\pm 3\%$ 。
- 液壓系統的液壓溢流閥、溢流閥、變向液壓閥等元件，保證液壓系統穩定可靠。
- 收口液缸三態保護閥，防止鋼絲繩成卷。
- 臂端或主車高度限位器，防止鋼絲繩成卷。
- 臂端設有風速儀，一旦風速超過設定值可實現吊臂回轉。
- 起吊收放鋼絲繩力矩保護器，防止鋼絲繩成卷，吊載保護吊桿等。

## Counterweight Combinations

配重組合



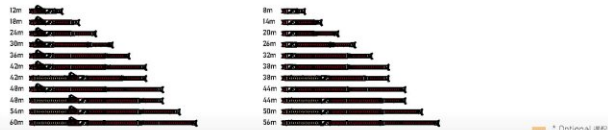
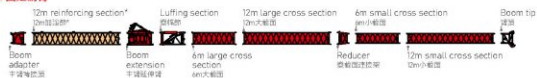
Total weight 總重量	Counterweight Combinations 配重組合
0	0
20t	①
30t	① + 2 × ②
40t	① + 2 × ③
50t	① + 2 × ② + 2 × ③
60t	③ + 4 × ③
70t	① + 4 × ② + 2 × ③
80t	③ + 6 × ③
90t	① + 6 × ② + 2 × ③
100t	③ + 8 × ③
110t	① + 8 × ② + 2 × ③
120t	③ + 10 × ③
130t	① + 10 × ② + 2 × ③
140t	③ + 11 × ③ + 2 × ②

# Jib Assembly

## 副臂組合

### Fixed jib assembly

#### 固定副臂



### Wind power jib

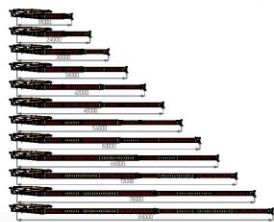
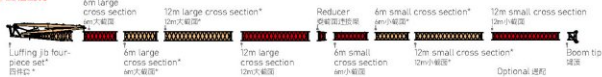
#### 風電臂



\* Optional section

### Luffing jib assembly

#### 變幅副臂



Note: Two 6m sections with the same cross-section are equivalent to one 12m section.  
備註：兩個相同截面的6m副臂等同於一個12m副臂。

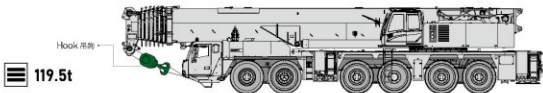
\* Optional section

## On-Site Heavy-Duty Driving Solutions

### 重載轉場方案

Thanks to the heavy-duty axles and 505 tires, SAC6000T8-8 is able to travel safely and efficiently between jobsites, in four different solutions.

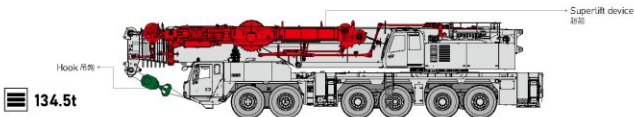
配置重載車軸、505大胎，重載轉場安全高效，4種方案可選。



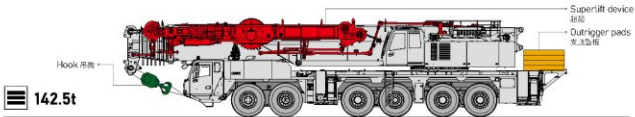
With all boom sections and outriggers, and hook block  
全臂、支腿、吊鉤



With all boom sections, outriggers, hook block, and outrigger pads  
全臂、支腿、吊鉤、支腿墊板



With all boom sections, outriggers, superlift device, and hook block  
全臂、支腿、超起、吊鉤

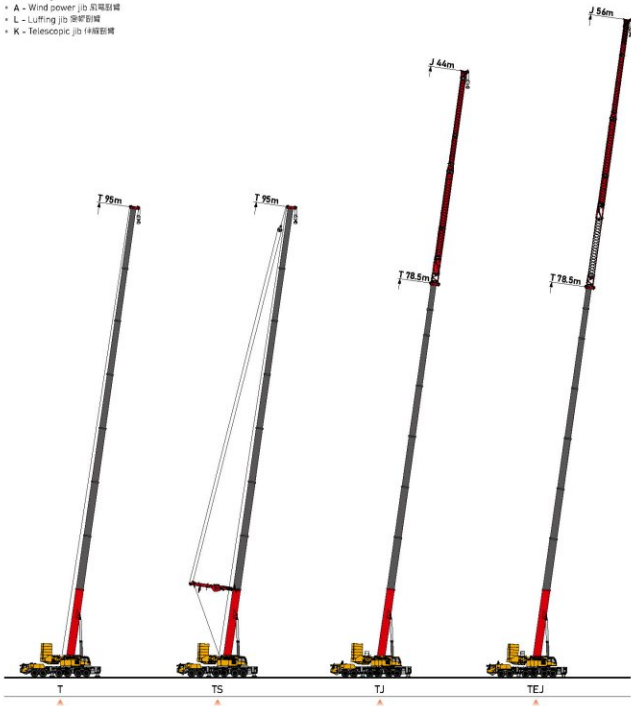


With all boom sections, outriggers, superlift device, hook block, and outrigger pads  
全臂、支腿、超起、吊鉤、支腿墊板

## Working Conditions & Code Description

### 工況組合及工況代碼說明

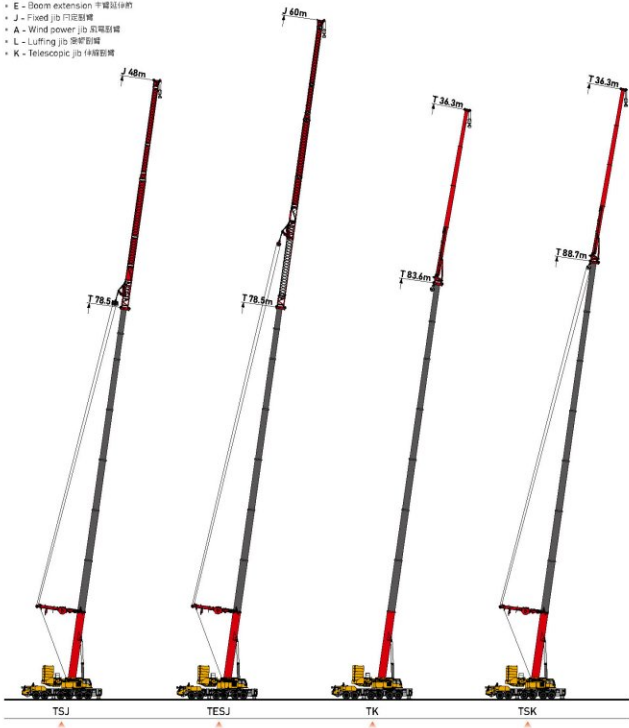
- T - Telescopic boom 伸縮臂
- S - Superlift device 超起
- E - Boom extension 伸臂延伸
- J - Fixed jib 固定副臂
- A - Wind power jib 風電副臂
- L - Luffing jib 變幅副臂
- K - Telescopic jib 伸縮副臂



## Working Conditions & Code Description

### 工況組合及工況代碼說明

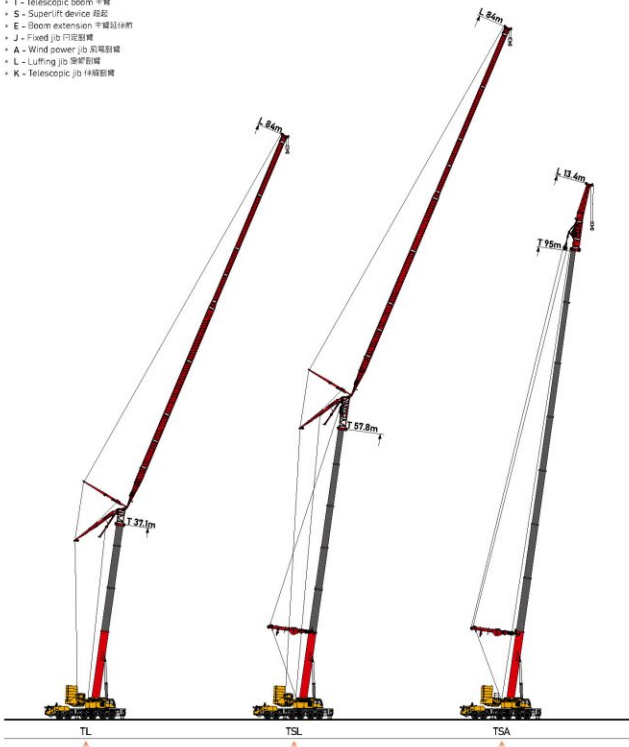
- T - Telescopic boom 伸縮
- S - Superlift device 超起
- E - Boom extension 半臂延伸
- J - Fixed jib 固定副臂
- A - Wind power jib 風電副臂
- L - Luffing jib 變幅副臂
- K - Telescopic jib 伸縮副臂



## Working Conditions & Code Description

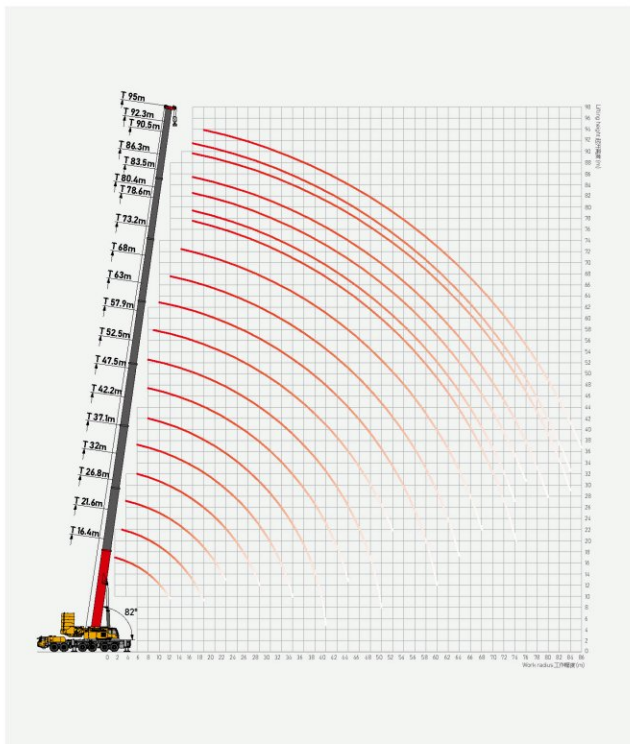
### 工況組合及工況代碼說明

- T - Telescopic boom 伸縮臂
- S - Superlift device 超起
- E - Boom extension 半臂延伸節
- J - Fixed jib 固定副臂
- A - Wind power jib 風電副臂
- L - Luffing jib 變幅副臂
- K - Telescopic jib 伸縮副臂



# Operating Range - Telescopic Boom (T)

起升高度曲線 - 主臂



# Load Chart - Telescopic Boom (T)

性能表 - 主臂



Unit: t

	16.4	21.5	21.6	21.6	21.6	26.6	26.7	26.8	26.8	26.8	27.5	27.7	27.7	31.9	32	32	32.6	36.9	37	37.1	37.1	37.1		
2.5	600*																							2.5
3	225																							3
3.5		128.4	150	175	225																			3.5
4		126	150	170	225																			4
4.5	220	120	150	165	225	84.1	125	150	172	200	81	98.6	150											4.5
5	275	115	150	160	215	76	121	150	167	195	76.1	93.7	150	131	150	188	92.8							5
6	210	110	150	155	206	69	117	148.6	160	192	68.2	84.6	150	122	150	185	84.6	65	131	150	150	150	6	
7	198	103	141	150	191.4	63.6	111	134.2	151	185	61.6	77.1	142.8	113	150	178	76.5	58.6	123	150	150	150	7	
8	178.8	95	129.4	135	172.8	58.2	105	122.4	141.5	169	56.1	71	130.3	105	150	164.6	70.7	53.5	115	150	150	150	8	
9	161.9	90	119.6	130	157.2	51.2	97	112.5	132	153.8	51.4	65.7	119.7	95	150	149.6	65.1	50.8	109	150	150	150	9	
10	146.8	85	111.6	125	144	45	87	103.8	125	141	47.5	61.3	110.7	90	139	136.9	60.2	46.6	97	140	137.8	10	10	
12	118.6	74	98.2	115	122.1	40.1	77	91.3	110	120.4	41.7	54.2	97	78	118.9	116.8	52.1	40.5	88	119.8	118	12	12	
14		66	86.5	107.5	103.9	36.2	68	79.7	98	104.3	36.5	47.6	85.4	68.6	103.5	101.3	44.8	36.9	79	102.1	102.9	14	14	
16		52.6	78.4	90.1	87.1	32.8	62	71.7	90	90	32.8	42.6	75.9	57	91.1	88.8	39.5	33	73	89.2	90.9	16	16	
18		47.7	71.8	71.1	68	30.5	56	64.4	81.7	79.2	29.6	38.3	67.7	51.8	80.7	78.4	35	30	67	79.4	81	18	18	
20						28.5	48.6	58.7	71.4	66	27	35	61.5	48.2	71.7	69.4	31.6	28	62	74.8	72.6	20	20	
22						17.2	42.9	54.8	59.5	56.2	24.9	32.2	56.7	43.3	63.5	61.1	28.7	26	51.5	65.6	65.4	22	22	
24														41.1	55.6	53.2	26.3	22.5	48.5	60.4	58.8	24	24	
26														36.2	47.3	45	24.3	20.2	44	54.7	52.8	26	26	
28														33.3	37.3	34.9	22.5	18.6	40	49.1	46.9	28	28	
30																		17.2	37	43.1	40.8	30	30	
32																		15.9	33	36.2	33.9	32	32	
34																		14.5	28	26.5	24.2	34	34	
36																							36	36
38																							38	38
40																							40	40
42																							42	42
44																							44	44
46																							46	46
48																							48	48
50																							50	50
52																							52	52
54																							54	54
56																							56	56
58																							58	58
60																							60	60
62																							62	62
64																							64	64
66																							66	66
68																							68	68
70																							70	70
72																							72	72
74																							74	74
76																							76	76
78																							78	78
80																							80	80
82																							82	82
84																							84	84
	21	11	13	16	21	7	11	13	16	18	7	9	13	12	13	17	8	6	12	13	13			
2#	0	0	0	0	0	0	0	0	0	0	0	0	0	0	0	0	46	0	0	0	0	0	2#	
3#	0	0	0	0	46	0	0	0	0	46	0	0	0	0	0	0	46	46	0	0	0	0	3#	
4#	0	0	0	0	0	0	0	0	0	46	0	0	100	0	46	46	0	0	0	0	46	46	4#	
5#	0	0	0	0	0	0	0	0	46	0	0	0	0	46	0	0	0	0	46	46	46	5#		
6#	0	0	0	46	0	0	0	46	46	0	0	0	46	0	0	0	0	0	46	46	46	6#		
7#	0	0	46	0	0	0	46	46	0	0	0	100	0	46	0	0	46	92	46	46	0	7#		
8#	0	46	0	0	0	92	46	0	0	0	100	0	0	46	0	0	100	92	46	0	0	8#		
	14.3	14.3	14.3	14.3	14.3	14.3	14.3	14.3	14.3	14.3	14.3	14.3	14.3	14.3	14.3	14.3	14.3	14.3	14.3	14.3	14.3	14.3		

Remark: \*\*\* Requires lifting capacity level.  
 備註: \*\*\* 必需吊載能力等級。

# Load Chart - Telescopic Boom (T)

性能表 - 主臂



Unit :

	37.1	37.8	37.8	37.9	38.7	38.9	42.1	42.2	42.3	42.3	42.3	43	43.2	43.9	44	47.3	47.4	47.5	47.4	47.5	47.5		
3																						3	
3.5																						3.5	
4																						4	
4.5																						4.5	
5																						5	
6	775	718	78.5	87.3	70.5	89.4																6	
7	173	64.4	71.1	77.8	64	79.4	60	130	150	165	147	72.3	124.2	70	78.4							7	
8	158	58.2	63.5	70.1	58.1	71.2	58	125	150	160	129.9	66	112.2	64.4	71	58.5	75.5	103.3	95	155	128.9	8	
9	148.1	52.9	58.4	63.6	52.8	64.4	56	120	149.6	143	115.7	60.7	101.8	59.3	63.3	56	68.4	92.7	92	147	114.3	9	
10	135.5	48.5	52.8	58.1	48.4	58.7	46.8	115	137.1	134.8	104.2	55.4	92.7	54.3	57.4	47.6	63.1	85	87.5	128	102	10	
12	115.6	42.1	45.6	50.4	41.9	50.6	40	107	117.5	115	87	48.6	79.8	47.2	49	43.1	54.4	73.3	78.6	114.8	85.6	12	
14	100.5	36.4	39.5	43.2	36.2	43.5	35.1	98	102.5	100.1	73.6	42.5	68.7	42	41.9	39.2	47.7	63.4	70	99.9	72.1	14	
16	88.4	32	34.2	38	31.8	37.9	32.2	93	90.7	88.2	64.8	38.2	59.7	37.6	36.5	36.1	42	54.9	65	86.1	62.4	16	
18	78.5	28.5	30.2	33.5	28.2	33.5	30.3	82	81.1	76.6	57.9	34.4	52.7	33.6	32	33.3	37.3	48.3	59	77.5	55.2	18	
20	70.2	25.6	27.1	30.2	25.3	30	27.3	71.5	73.1	67.8	51.8	31	47	30.4	28.5	26.4	33.6	42.7	55	70.5	48.7	20	
22	62.9	23.2	24.4	27.1	22.9	26.9	25.6	65.4	66.2	60.5	47	28	42.4	27.9	25.6	24	30.5	37.9	50	61.2	43.7	22	
24	56.3	21.1	22.3	24.9	20.8	24.5	21.1	60.3	60.2	53	42.8	25.4	38.4	25.2	23.2	20	27.6	34	46.8	58	39.1	24	
26	49.7	19.2	20.4	22.8	19	22.4	19.5	54.4	54.8	47.5	39.2	23.1	34.7	22.8	21.3	18.5	25.5	30.3	44.5	52.7	35.4	26	
28	43.6	17.8	18.8	21.1	17.5	20.5	18.2	49.2	48.9	43	36.1	21.2	31.6	21	19.4	16	23.3	27.4	41.2	47.2	32.1	28	
30	38.3	16.5	17.5	19.4	16.3	18.9	17	44	43.7	39	33.3	19.5	28.9	19.2	17.7	14.9	21.7	24.7	35	42.1	29.2	30	
32	31.3	15.4	16.2	18	15.1	17.5	16	40	39.3	35	30.8	18	26.6	17.8	16.3	13.8	19.8	22.5	31.6	37.6	26.8	32	
34	24.6	14.2	15.1	16.7	13.8	16.1	15	36.9	35.4	31.1	27.7	16.8	24.5	16.6	15.1	12.7	18.1	20.5	28.9	33.8	24.4	34	
36																							
38																							
40																							
42																							
44																							
46																							
48																							
50																							
52																							
54																							
56																							
58																							
60																							
62																							
64																							
66																							
68																							
70																							
72																							
74																							
76																							
78																							
80																							
82																							
84																							
	15	6	7	8	6	8	5	12	13	14	13	6	11	6	7	5	7	9	8	13	11		
2#	46	0	0	0	0	0	0	0	0	46	92	0	0	0	0	0	0	0	0	46	92	2#	
3#	46	0	0	0	0	0	0	0	46	46	46	0	100	0	0	0	0	0	0	46	46	46	3#
4#	46	0	0	0	0	0	0	46	46	46	46	0	46	0	0	0	0	92	46	46	46	4#	
5#	46	0	0	0	0	0	0	46	46	46	46	0	46	0	0	0	46	92	46	46	46	5#	
6#	0	0	0	100	0	100	46	46	46	46	0	46	46	46	100	92	92	46	46	46	46	6#	
7#	0	100	92	46	100	100	92	46	46	0	0	100	0	100	100	92	92	46	46	46	0	7#	
8#	0	92	100	46	100	0	92	46	0	0	0	92	0	100	46	92	46	0	46	0	0	8#	
	14.3	14.3	14.3	14.3	14.3	14.3	14.3	14.3	14.3	14.3	14.3	14.3	14.3	14.3	14.3	12.8	14.3	14.3	14.3	14.3	14.3		

# Load Chart - Telescopic Boom (T)

## 性能表 - 主臂



Unit: t

	48.2	48.2	48.4	48.4	49.1	49.1	49.3	50	50.2	50.2	50.2	52.5	52.6	52.7	52.6	52.7	53.5	53.6	54.3	55.2	55.4	
3																						3
3.5																						3.5
4																						4
4.5																						4.5
5																						5
6																						6
7																						7
8	66	66.2	71.2	134.4																		8
9	60.1	61.2	101.3	122.3	60.2	60.4	119.8	59.2	88.2	103.7	118.4	95	87.5	117.9	100.1	106	103.3	114.4	60.5	58.8	98.6	9
10	55.4	55.1	92.2	111.1	55.1	54.7	108.1	54.2	79.4	93.3	108.3	46.2	83	108.2	89.6	96	93.8	107.7	55.7	54.6	88.1	10
12	47.7	46.8	78.7	95.9	47.6	47.6	92.8	46.7	68.3	79.1	91.5	38.9	77.3	92.5	76	81.8	79.5	91.3	49	47.7	73.6	12
14	42	41	67.4	83	41.6	41.1	79	40.6	58.6	66.5	80.3	33.9	74.1	79.7	65.4	68.4	67.8	78.3	43.1	42.5	61.6	14
16	37.4	36.3	58	72.1	36.7	36.3	69.5	35.8	51.5	57.7	69.3	30.5	70.3	70.1	56.1	58.9	58.7	69.6	39	38.6	53.2	16
18	32.6	32	51.1	63.6	32.5	32.2	61.5	31.4	44.5	49.3	61.1	28.2	67.6	60.7	48.4	49.9	50.7	62	34.6	34.3	45.1	18
20	29.8	28.3	45.1	55.5	29.6	28.7	54.5	28.4	39.4	44.1	53.9	26	63.5	53.2	42.8	43.9	45.1	54.4	31.7	31.2	40.2	20
22	27.1	25.3	40.8	48.8	27.1	25.7	48.7	25.3	34.9	38.9	46.8	23.1	60.6	47.2	37.8	38.2	40.1	47.9	29.2	29.1	35.4	22
24	24.7	22.9	36.7	43.2	24.6	23.1	44.1	23	31.3	34.8	41.4	21.5	55.9	41.6	34	34.2	36.5	42.4	27.1	26.8	31.7	24
26	22.4	20.9	33.2	38.5	22.4	21.1	39.8	20.8	27.9	30.9	36.3	19.8	51.8	36.5	30.5	30.4	33	37.4	25.1	24.3	28.1	26
28	20.5	19.1	30.1	34.3	20.8	19.2	35.5	19	25.2	28	32.1	18.4	47.9	32.2	27.8	27.2	30	33.4	22.4	22.1	25	28
30	18.7	17.4	27.4	30.2	19	17.5	31.6	17.4	22.9	25	28.7	17.2	43.1	28.7	25.4	24.1	27.3	29.6	20.6	20.4	22.1	30
32	17.3	16.1	25.2	27.5	17.3	16.1	28.7	15.9	20.7	22.2	26.1	15.2	38.7	25.5	23.2	21.8	24.9	26.2	19.3	18.9	20.3	32
34	15.9	14.8	23.1	24.9	16	14.7	26.2	14.7	18.9	20.2	23.3	14.3	34.8	23	21.3	19.6	22.9	23.6	17.7	17.6	18.4	34
36	14.8	13.7	21.2	22.1	14.7	13.7	23.4	13.6	17.1	18.5	20.6	13.3	32.2	20.9	19.5	17.7	21	21.5	16.1	16.1	16.4	36
38	13.7	12.7	19.6	20.2	13.6	12.6	21.3	12.6	15.3	16.6	18.5	12.5	29.2	18.7	18	16.1	19.5	19.2	14.8	14.9	14.6	38
40	12.6	11.8	18.1	18.2	12.6	11.7	18.9	11.7	14.1	15.2	16.6	11.9	26.6	16.9	16.7	14.5	18	17.3	13.8	13.7	13.1	40
42	11.9	11.1	16.7	16.4	11.8	10.8	16.4	10.9	13.1	13.9	15.1	11	24.2	16.2	16.3	14.5	16.6	15.8	12.8	12.7	11.8	42
44	11	10.2	15.4	13	11.1	10.1	14.1	10.2	12	12.4	13.5	10.5	22.1	15	15.9	14.4	15.4	14.3	11.9	11.8	10.6	44
46					10.2	9.4	8.1	9.4	11	11.5	10.5	9.8	20	14	15.6	14.2	14.3	13.5	11	11	9.4	46
48												9.3	15.6	11.6	15.3	13.9	13.3	12	10.2	10.2	8.8	48
50												8.8	8.1	4.5	9.2	6.8	11.9	7.6	9.6	9.5	7.8	50
52																						52
54																				8.9	6.8	54
56																						56
58																						58
60																						60
62																						62
64																						64
66																						66
68																						68
70																						70
72																						72
74																						74
76																						76
78																						78
80																						80
82																						82
84																						84
	6	6	10	12	5	5	11	5	8	9	11	5	8	10	9	9	9	10	5	5	9	
2#	0	0	0	100	0	0	92	0	0	0	100	0	46	92	0	46	0	100	0	0	46	2#
3#	0	0	0	100	92	0	0	100	0	0	100	0	46	92	46	92	100	92	0	0	100	3#
4#	0	0	0	46	46	0	0	100	0	100	100	0	46	46	92	46	46	46	0	0	100	4#
5#	0	0	0	46	46	0	0	0	0	100	100	0	46	46	46	46	46	46	46	46	46	5#
6#	92	100	46	0	92	100	0	100	100	0	0	92	46	46	46	46	46	46	100	100	0	6#
7#	100	92	46	0	100	100	0	100	0	0	0	92	46	0	46	46	46	0	100	100	0	7#
8#	92	92	0	0	100	92	0	100	0	0	0	92	46	0	46	0	46	0	92	100	0	8#
	12.8	12.8	14.3	12.8	12.8	12.8	12.8	12.8	12.8	12.8	12.8	12.8	12.8	12.8	12.8	12.8	12.8	12.8	12.8	12.8	12.8	

# Load Chart - Telescopic Boom (T)

性能表 - 主臂



Unit :

	57.8	57.8	57.6	57.9	58.8	59.6	59.7	60.6	62.9	62.9	62.8	62.8	62.9	63	63	63.8	63.8	63.8	64.6	64.7	65.6		
3																						3	
3.5																						3.5	
4																						4	
4.5																						4.5	
5																						5	
6																						6	
7																						7	
8																						8	
9	77.1	105	86.1	96.2																		9	
10	73.6	96	82.8	90.5	98.1	61.6	68.2	65.1	82.6	82	67.2	43.8	58.7	77.2	77.8	83.5	57.2	73	47.4	53.7	52.4	10	
12	65.5	85	75	81.1	87.2	56	62.8	61.3	79.6	78	60.3	40	58.4	76.3	71.6	81.2	56.9	71.6	47.4	53.7	52.4	12	
14	57.1	73.1	68.3	70.4	76.2	49.4	54.6	54	71.2	68	54.4	35.2	52.8	69.6	66.1	73.7	52.8	63.7	45.2	50.9	50.6	14	
16	51.3	63.8	62.8	60.3	66.5	43.6	48.5	48.1	60.7	60.6	50.2	32.6	47.1	61.3	59	65.2	46.5	56.2	41.3	44.7	44.9	16	
18	44.8	56.9	57.7	54.6	59.6	39.3	43.2	42.7	52	51.5	45.3	28.1	42.7	52.9	51.4	58.2	42.1	50.2	37.3	41.2	41.3	18	
20	39.9	53.3	54	51.2	53	35.4	39.3	38.6	44.5	46.5	41.8	26.6	38.9	44.8	46.4	52.1	37.8	44.8	33.6	37.8	37	20	
22	35.6	49.4	50.8	47.8	47.6	31.9	34.4	34	38.8	44.8	39.1	25	34.4	39.2	43.5	47	33.9	40.6	31	33.8	33.4	22	
24	32.2	45.3	47.1	42.5	42.3	29	31.4	30.9	34.1	42.4	36.4	23.8	31.8	34.3	41.2	42.9	31.7	36.7	28.7	31.4	30.4	24	
26	29.5	41.6	44.2	40.4	38.6	26.2	28.3	28.4	30.2	39.1	33.3	22.2	28.9	30.1	37.1	39	28.3	33.3	26.1	29	28	26	
28	26.6	38.4	41.8	37.3	34.2	23.9	26.1	25.8	26.9	36.2	31.5	19.3	26.3	26.3	35.2	35.4	26.2	29.8	23.3	26.4	26.1	28	
30	24.4	35	39.8	33.9	30.4	21.6	23.3	23.4	23.9	34	29.7	18	24.5	23.3	31.8	32.4	23.9	26.8	21.6	24	23.7	30	
32	22	32.5	38.2	31.2	28.8	19.5	20.9	21	21.5	31	28.3	16.6	21.8	20.5	28.3	29.9	21.6	24.2	20.1	21.6	21.6	32	
34	19.8	30.4	36.4	28.3	24.4	17.8	19.1	19.2	19.3	28.5	26.4	15.8	20.1	18.2	27.1	27	19.8	21.8	18.1	19.7	20.1	34	
36	17.9	28.3	33.7	25.5	22.1	16.3	17.4	17.5	17.3	26.7	25.5	15	18.2	16	25.7	24.2	17.9	19.5	16.6	17.9	18.6	36	
38	16.4	26.5	30.7	23.4	19.7	15	15.8	15.8	15.7	24.3	24.1	14	16.7	14.6	24.7	22.2	16.5	18	15.2	16.3	17	38	
40	14.9	25	28	21.6	17.8	13.7	14.3	14.3	14.1	22.4	23	12.6	15.3	13.2	22.1	20.5	15.1	16.5	14	15	15.2	40	
42	13.7	22.8	25.6	19.6	16.4	12.7	13.2	13.3	12.5	21	22	12	13.8	11.8	19.7	18.4	13.6	14.9	12.9	13.7	13.6	42	
44	12.5	20.6	23.5	18	14.5	11.7	12	12.1	11.2	22	21	11.1	12.5	10.4	17.6	16.8	12.4	13.6	11.9	12.5	12.6	44	
46	11.5	18.2	21.6	15.5	13.2	10.8	11	11	10.2	17.3	20.3	10.5	11.4	9.3	15.7	15.7	11.5	12.6	11	11.4	11.4	46	
48	10.5	16.8	19.8	13.8	12	9.9	10.3	10.3	9.1	15.5	19.7	9.9	10.5	8.1	14.5	14.1	10.5	11.3	10.1	10.6	10.4	48	
50	9.7	15.1	18.2	12.1	10.7	9.2	9.3	9.3	8.2	14.4	18.5	9.3	9.7	7.1	12.9	12.9	9.7	10.3	9.4	9.7	9.7	50	
52	8.9	13.3	15.5	10.7	9.9	8.5	8.7	8.6	7.3	12.9	17.2	8.8	8.9	6.2	11.2	11.9	9	9.5	8.6	8.8	8.7	52	
54					8.7	7.8	7.8	7.8	6.3	11.5	16.1	8.3	8	5.2	9.9	10.6	8.1	8.4	8	8	8	54	
56									5.7	10.1	14.9	7.1	7.4	4.4	8.3	9.9	7.6	7.9	7.3	7.3	7.4	56	
58									4.9	8.2	11.6	6.4	6.8	3.8	7.2	8.7	6.8	7	6.7	6.5	6.7	58	
60																							60
62																							62
64																							64
66																							66
68																							68
70																							70
72																							72
74																							74
76																							76
78																							78
80																							80
82																							82
84																							84
	7	9	8	9	9	6	6	6	7	7	6	4	5	7	7	7	5	6	4	5	5		
2#	0	92	46	92	100	0	0	0	46	92	46	0	0	46	92	100	0	0	0	0	0	2#	
3#	0	46	46	92	92	0	0	0	92	92	46	0	0	92	92	92	0	100	0	0	0	3#	
4#	92	46	46	46	46	46	100	100	92	46	46	46	92	92	92	46	100	92	46	92	100	4#	
5#	92	46	46	46	46	100	100	100	46	46	46	92	92	92	46	46	92	92	100	100	100	5#	
6#	92	46	46	46	46	100	92	100	46	46	46	92	92	46	46	46	92	46	100	100	100	6#	
7#	46	46	46	46	46	92	92	92	46	46	92	92	46	46	46	46	92	46	92	92	92	7#	
8#	46	46	92	0	0	46	0	0	46	46	92	92	46	0	0	46	46	46	92	46	46	8#	
	12.8	12.8	12.8	12.8	12.8	12.8	12.8	12.8	12.8	12.8	12.8	11.1	12.8	12.8	12.8	12.8	12.8	12.8	12.8	12.8	12.8	12.8	

# Load Chart - Telescopic Boom (T)

性能表 - 主臂



Unit: t

	66.4	66.5	68	68.1	68	68.2	69	68.9	69	69.1	69.8	69.8	70.7	70.8	70.9	70.9	70.9	71.6	71.6	72.5	72.7		
3																							3
3.5																							3.5
4																							4
4.5																							4.5
5																							5
6																							6
7																							7
8																							8
9																							9
10	43.7	50.2																					10
12	43.7	50.2	33.4	45	55.4	66	65.9	45.5	56.8	62.4	42.9	43.7											12
14	43.5	49.5	31.9	40.1	50.3	60.5	65.6	45.5	56.4	62.4	42.9	43.7	42	45.8	50.4	54.1	55.7	39.9	40.4	39.1	46.3	14	
16	39.7	44.4	30.9	43	45.2	53.3	60.5	42.9	53.2	58.4	41.7	42.6	41.7	44.9	49.2	53.8	55.5	39.8	40.4	39.1	46.2	16	
18	35.4	40.6	28.7	46.7	41.7	48	54.8	39.4	47.7	53.4	38.2	38.6	38.1	41.4	44.3	48.7	51.8	35.7	37.1	35.6	43.8	18	
20	32.8	36.7	26.5	41	38.4	41.6	49.3	36	43	47.8	34.3	34.7	34.2	37.9	40.8	42.9	45.9	33.2	33.8	33.2	40.4	20	
22	30.1	33.2	24.8	38	35	37.8	43.7	32.8	39.2	42.8	31.7	32.3	31.8	33.8	37.2	37.4	41.4	30.9	31.3	30.9	35.9	22	
24	28	30.4	23.2	35.3	32.8	34.3	39.9	30.3	34.8	39.1	29.4	29.9	29.5	31.6	33.8	32.8	37.6	28.7	29.1	28.7	33.5	24	
26	25.6	28.1	21.6	34	30.6	32	36.2	27.7	31.6	35.1	27.5	27.2	27.5	28.9	31.3	29	33.7	26.9	27.3	26.9	30.5	26	
28	22.9	25.8	19.8	31.1	28.9	30.6	32.5	25.8	29.2	31.7	25.2	24.7	25.2	26.4	29.3	25.7	31	24.3	24.3	24.5	28.1	28	
30	21.3	23.2	18.3	30.3	27.3	28.6	30.1	23	26.6	28.8	23.1	22.4	22.3	24	27.4	22.9	27.9	22.3	22.2	22.4	26.3	30	
32	19.8	21.7	16.7	28	26.1	27.4	27.4	21.8	24.3	26.4	21.3	20.6	21	21.9	25.1	20.5	25.6	21	21	20.8	23.4	32	
34	18.5	19.8	15.7	26.8	24.1	26	25.2	20.2	22	24	20.3	19.1	19.5	20.1	22.1	18.2	22.6	19.9	19.6	19.5	21.9	34	
36	17	18.4	14.9	25.2	22.5	24.4	22.9	18.8	20	21.1	18.6	17.8	18.2	18.3	20.5	16.3	20.2	18.4	18	18.1	20.1	36	
38	15.5	17.2	14	23.6	21.5	22.6	20.9	17.3	17.9	19.4	17.5	16.4	17.1	16.6	18.7	14.8	18.3	16.8	16.9	16.9	18.8	38	
40	14.2	15.5	13.3	21.9	20.4	21.2	18.8	16.2	16.5	17.2	16.5	15.6	15.8	15.1	17.2	13.4	16.4	15.4	15.6	15.7	17.1	40	
42	13.1	13.8	12.5	20.5	19.5	19.6	16.6	14.9	15.2	15.4	15.1	14.4	14.7	13.7	15.7	12	14.4	14.4	14.4	14.6	15.3	42	
44	12	12.7	11.7	18.9	18.8	18.3	15	13.4	13.8	13.8	13.8	13.1	13.4	12.6	14.3	10.9	12.7	13.3	13.2	13.4	13.7	44	
46	11.1	11.6	11.2	17.2	17.8	16.8	13.5	12.1	12.4	12.4	12.8	11.8	12.4	11.7	13.1	9.7	11.2	12.4	12.3	12.4	12.5	46	
48	10.2	10.4	10.5	15.5	17.3	15.1	12.2	11.3	11.4	11.1	11.7	11.1	11.3	10.7	11.9	8.7	10	11.5	11.1	11.4	11.3	48	
50	9.4	9.7	9.9	13.9	16.5	13.5	10.9	10.3	10.6	9.9	10.5	10.2	10.2	9.7	10.7	7.9	8.8	10.5	10.1	10.2	10.2	50	
52	8.6	8.9	9.3	12.4	16	11.9	9.9	9.3	9.8	8.8	9.6	9.2	9.6	9.1	9.8	7	7.8	9.7	9.4	9.6	9.3	52	
54	8	8	8.9	11	15.3	10.5	8.8	8.7	8.7	7.8	8.5	8.6	8.7	8.3	8.9	6.3	6.8	8.7	8.6	8.8	8.5	54	
56	7.3	7.5	8.5	9.8	14.7	9.1	7.9	7.9	8.1	6.9	7.7	8	7.9	7.6	8	5.5	6	7.9	7.8	7.9	7.7	56	
58	6.7	6.7	8.2	8.6	14.3	7.9	7	7.3	7.2	5.9	7.2	7.3	7.3	7.1	7.3	4.8	5.2	7.3	7.3	7.4	6.9	58	
60	6.3	6.3	7.8	7.5	13.1	6.7	6.3	6.7	6.6	5.1	6.4	6.9	6.5	6.3	6.5	4.2	4.4	6.5	6.6	6.7	6.2	60	
62	5.7	5.7	7.3	6.5	11.3	5.7	5.7	6.2	5.9	4.3	5.9	6.2	6.2	6	5.9	3.6	3.7	6	6.1	6.2	5.5	62	
64			6.6	4.2	7.9	3.6	4.8	5.7	5.3	3.8	5.4	5.7	5.5	5.4	5	3.3	3	5.4	5.4	5.7	5	64	
66																							66
68																							68
70																							70
72																							72
74																							74
76																							76
78																							78
80																							80
82																							82
84																							84
	4	5	3	6	5	6	6	4	5	6	4	4	4	4	5	5	5	4	4	4	4		
2#	0	0	0	92	46	92	100	0	0	100	0	0	0	0	0	46	92	0	0	0	0	2#	
3#	0	0	0	92	46	92	92	0	100	92	0	0	0	46	92	100	100	0	0	0	100	3#	
4#	46	100	92	92	46	92	92	100	92	92	92	100	100	100	100	100	100	92	100	100	100	4#	
5#	100	100	92	46	46	92	46	92	92	92	100	100	100	100	100	100	100	100	100	100	100	5#	
6#	100	100	92	46	92	46	46	92	92	46	100	92	100	100	92	92	100	100	100	100	100	6#	
7#	100	100	92	46	92	46	46	92	46	46	92	92	92	92	92	46	0	100	100	100	100	7#	
8#	100	46	92	46	92	0	46	92	46	0	92	92	92	46	0	0	0	100	92	100	0	8#	
	11.1	11.1	11.1	11.1	11.1	11.1	11.1	11.1	11.1	11.1	11.1	11.1	11.1	11.1	11.1	11.1	11.1	11.1	11.1	11.1	11.1		

## Load Chart - Telescopic Boom (T)

性能表 - 主臂



Unit: t

	73.3	73.3	73.4	73.4	74.2	74.2	74.3	76	75.9	76	76.1	76.1	76.8	76.9	77	77	77.7	77.8	78.4	78.5	78.5		
3																						3	
3.5																						3.5	
4																						4	
4.5																						4.5	
5																						5	
6																						6	
7																						7	
8																						8	
9																						9	
10																						10	
12																						12	
14	51.6	51	50.4	48.6	52.9	45.2	51.1	45	36.3	41.4	44	45.9	35.8	40.4	42.4	44.5						14	
16	51.3	48.6	50.4	47.3	52.9	45.2	51	45	36.3	41.4	44	46.1	36.7	40.4	42.5	44.6						16	
18	48	44	47.4	43.6	50.7	43.6	49.4	44.5	36.2	41	44	46	35.3	40.4	42.6	44.7	33.8	38.6	28.7	41	40.1	18	
20	44.6	39.8	44	38.5	46.4	40.6	45.5	41.9	34.3	38.4	41.7	44	33.6	38.5	41	43.2	33.3	37.4	27.5	39.1	36.5	20	
22	41.1	35.7	40.7	34.5	42.1	36.5	41.6	38.5	32	34.5	38.4	40.7	31.5	34.6	38.3	40.3	31.2	34.2	26.6	35.9	34.3	22	
24	36.4	34.4	35.9	33.2	38.4	33.8	37.7	34.3	29.9	32.2	34.5	36.7	29.5	32.2	33.9	36	29.1	31.7	25.1	31.8	29	24	
26	32.3	33.2	32.1	30.8	34.3	31	33.6	30.6	27.8	29.9	30.8	33	27.5	29.8	31.2	32.6	27	29.4	24.3	29	27.2	26	
28	29.1	32.1	28.5	29.3	31.7	28.8	31	27.4	26.2	27.9	27.6	30.4	25.8	28.1	27.5	29.8	24.7	27.6	22.3	26.9	25.8	28	
30	26	30.1	25.6	27.4	29.6	26.8	28.9	24.7	23.3	25.9	24.8	28.1	22.5	25.8	24.8	27.6	22.5	25.6	20.7	24.6	24.5	30	
32	22.5	27.4	22.4	25	27	24.5	26.3	22	21.4	23.2	22	25.8	21.1	23	22	25	20.9	22.7	20.3	22.8	23.6	32	
34	19.8	25.6	19.7	23.1	25.3	22.1	23.5	19.5	20.1	21.9	19.5	22.9	19.7	21.2	19.7	22.3	19.5	21.4	19.5	21.1	22.6	34	
36	17.6	24.2	17.5	21.5	22.4	20.8	21.7	17.4	18.9	20.6	17.2	21	18.4	19.9	17.2	20.7	18.4	19.9	18.2	18.8	21.2	36	
38	15.7	22.6	15.5	20.2	20.5	19.2	19.8	16	17.6	19.2	15.5	19.1	17	18.8	15.6	19.3	17.2	18.5	17.6	17.1	20	38	
40	14	21.3	13.7	19.5	18.7	17.5	18.1	14.6	16	17.9	14	17.1	15.9	17.5	14	18	16.1	17.6	16.6	15.1	18.9	40	
42	12.8	19.7	12.5	18.6	17.2	16.2	16.6	12.9	14.5	16.5	12.6	15.6	14.6	16.2	12.7	16.2	14.7	16.3	15.9	13.6	18	42	
44	11.5	18.8	11.3	17.5	15.3	16.8	14.9	11.6	13.2	15.2	11.4	14.2	13.1	15.1	11.4	14.9	13.2	15.2	14.8	12.3	16.6	44	
46	10.1	17.3	9.8	16.6	13.6	13.2	13.2	10.4	12.2	14	10.3	12.6	12.3	13.6	10.3	13.3	12.3	13.8	14.2	11	15.7	46	
48	8.9	15.9	8.7	15.3	12.1	11.9	11.6	9.4	11.2	12.7	9.2	11.1	11.4	12.1	9.2	11.7	11.5	12.3	13.3	9.7	14.8	48	
50	7.9	14.4	7.7	13.7	10.8	10.8	10.3	8.5	10.2	11.3	8.3	9.7	10.4	11	8.2	10.5	10.4	11.1	12.8	8.8	13.9	50	
52	7.1	12.9	6.9	12.2	9.7	9.9	9.2	7.6	9.5	10.4	7.3	8.6	9.6	10	7.4	9.3	9.6	10.1	12.2	8	13.3	52	
54	6.2	11.5	6.1	10.9	8.7	9	8.2	6.8	8.8	9.5	6.5	7.6	9	9.1	6.5	8.2	8.9	9.2	11.8	6.8	12.1	54	
56	5.4	10.3	5.2	9.6	7.7	8.2	7.3	6.1	8	8.8	5.7	6.7	8	8.3	5.8	7.2	8.1	8.4	11.1	6.1	10.9	56	
58	4.9	9.4	4.6	8.5	6.8	7.6	6.3	5.4	7.4	8	5.1	5.9	7.3	7.5	5.2	6.3	7.4	7.6	10.6	5.4	9.7	58	
60	4.1	8.3	3.8	7.4	6.1	6.8	5.6	4.8	7	7.1	4.5	5.1	6.8	6.8	4.5	5.4	7	6.9	9.9	4.6	8.6	60	
62	3.3	7.2	3.1	6.4	5.3	6.2	4.8	4.2	6.2	6.4	3.9	4.4	6.1	6.1	4	4.7	6.3	6.2	9.4	3.9	7.4	62	
64	2.8	6.2	2.6	5.5	4.6	5.6	4.2	3.6	5.8	5.8	3.4	3.7	5.7	5.5	3.4	4	5.8	5.6	8.7	3.4	6.7	64	
66	2.3	5.3	2	4.6	3.9	5.1	3.5	3.2	5.1	5.2	2.8	3.1	5.2	4.9	2.9	3.3	5.3	5	8.2	2.9	5.8	66	
68	1.9	4.4	1.6	3.8	3.4	4.5	2.9	2.7	4.8	4.7	2.4	2.5	4.7	4.5	2.3	2.6	4.8	4.5	8.1	2.3	5	68	
70																	4.3	3.8	1.9	2	4.4	4.1	70
72																	3.9	3.4	1.5	1.5	4	3.5	72
74																						2	74
76																							76
78																							78
80																							80
82																							82
84																							84
2#	5	5	5	4	5	4	5	4	3	4	4	4	3	4	4	4	3	4	3	4	4	2#	
3#	46	92	46	92	100	0	100	46	0	0	46	92	0	0	46	100	0	0	0	46	92	2#	
4#	92	92	92	92	100	92	100	46	92	100	100	46	100	100	100	46	100	100	92	92	92	3#	
5#	92	92	92	92	92	92	100	100	100	100	100	100	100	100	100	100	100	100	92	92	92	4#	
6#	92	92	92	92	92	92	92	100	100	100	100	100	100	100	100	100	100	100	92	92	92	5#	
7#	46	46	92	46	46	92	46	46	92	92	46	100	92	92	46	100	100	92	92	46	6#		
8#	46	46	0	0	46	46	0	46	92	46	0	0	92	46	0	0	100	46	92	46	46	8#	
9#	11.1	11.1	11.1	11.1	11.1	11.1	11.1	11.1	11.1	11.1	11.1	11.1	11.1	11.1	11.1	9.9	11.1	11.1	9.9	11.1	11.1	9#	

# Load Chart - Telescopic Boom (T)

性能表 - 主臂



Unit: t

	78.6	79.4	79.3	79.5	81.2	81.2	81.1	81.3	82.1	82.1	82	82	82.2	82.2	83	82.8	82.9	83.1	83.5	83.4	83.7	
3																						3
3.5																						3.5
4																						4
4.5																						4.5
5																						5
6																						6
7																						7
8																						8
9																						9
10																						10
12																						12
14																						14
16	45	35.1	36.4	35.5	35.8	40	33.4	38.8	34.6	38.5	32.2	32.7	37.1	37	33.5	31.2	31.5	34.9	27.6	33.2	30.6	16
18	37.1	31.8	36	34.5	35.1	39.8	33	38.5	34.6	38.6	32.3	32.7	37.8	38	33.5	31.3	31.6	35.2	25.5	30.5	30.7	18
20	33.5	30.5	35.7	32.4	34.6	39.5	32.5	38.4	34.4	38.9	32.3	32.8	36.1	36.4	33.4	31.4	31.7	36.6	24.7	29.3	30.8	20
22	33.7	29.6	33.7	31.3	34.5	38.8	32	38.1	33.5	38	31.6	32	37	37.5	33	31.1	31.4	36.1	23.9	28.5	30.8	22
24	28.3	28.3	31.5	28.6	32.3	35.6	30.2	34.8	31.5	34.8	29.8	30.3	34.4	34.4	31.2	29.4	29.9	34.3	23.2	27.3	29.3	24
26	27	27.1	29.7	27	30.1	32.3	28.6	32.3	29.2	32.1	28	28.3	32	31.8	29.1	27.6	27.9	31.6	22.2	25.2	27.5	26
28	25.5	25.5	27.9	25.5	28	29.9	26.6	29.7	27.1	29.9	26.1	26.4	29.8	29.5	27	26	26.1	29.5	21.3	23.2	26.1	28
30	24.3	24.3	26.2	24.2	25.4	27.5	23.5	27.7	25.2	27.7	23.7	23.9	27.2	27.5	25.4	23.1	23.3	27.1	20.3	21.9	23.2	30
32	23.4	23.4	23.2	23.3	22.8	25.5	22	25.5	22.8	25.7	21.8	22.1	24.8	24.8	22.2	21.5	21.7	24.8	19.9	21.1	21.8	32
34	22.4	22.5	21.9	22.4	20.4	22.4	20.9	22.2	20.5	22.6	20.6	20.9	22.4	22.3	20.8	20.6	20.8	22.3	19.1	20.4	20.5	34
36	21	21.4	20.3	20.9	18	20.8	19.8	20.6	18.3	21.1	19.5	19.8	20.7	20.9	18.6	19.4	19.6	20.6	18.2	19.1	19.3	36
38	19.9	20.3	18.9	19.9	16.2	19.6	18.8	19.3	16.4	19.5	18.6	18.4	19.1	19.3	16.6	18.5	18.3	19.2	17.3	18.5	18.3	38
40	18.8	19.1	18	18.7	14.9	18.1	17.7	17.9	14.9	18.4	17.4	17.4	18	18.2	15.1	17.3	17.3	17.8	16.5	17.3	17.2	40
42	17.8	18.1	16.5	17.8	13.6	16.3	16.5	16.5	13.5	16.8	16.4	16.2	16.6	16.6	13.6	16.1	16.4	16.2	15.9	16.8	16.3	42
44	16.5	16.8	15.6	16.5	12.1	14.8	15.4	14.8	12.2	15.6	15.4	15.3	14.8	15.2	12.3	15.2	15.2	15	14.8	15.5	15	44
46	15.6	15.9	14.2	15.6	10.8	13.3	14.4	13.2	11	14.4	14.3	14.3	13.1	13.5	11.1	14.4	14.2	13.8	14.2	14.7	14	46
48	14.6	14.8	12.6	14.5	9.8	12.3	13.5	11.9	10	12.8	13.6	13.3	11.8	12.4	10	13.4	13.3	12.4	13.2	13.9	13.1	48
50	13.8	14	11.6	13.7	8.9	11	12.6	10.7	9.1	11.4	12.3	11.9	10.7	11	9	12.5	12.1	11.1	12.7	13.2	12.2	50
52	13.1	13.3	10.7	13.1	8.1	9.8	11.3	9.6	8.1	10.3	11.5	10.8	9.8	9.7	8.2	11.5	10.9	10.1	12.2	12.5	11.1	52
54	11.9	11.9	9.6	11.7	7.3	8.6	10.3	8.4	7.3	9.2	10.5	9.9	8.8	8.7	7.3	10.5	10	9	11.8	12	10.1	54
56	10.6	10.7	8.8	10.5	6.5	7.6	9.5	7.4	6.5	8.2	9.5	9	7.7	8	6.6	9.7	9.1	8.1	11	11.4	9.2	56
58	9.5	9.7	8	9.3	5.8	6.9	8.6	6.5	5.8	7.5	8.7	8.2	6.7	7	5.9	8.8	8.3	7.2	10.7	10.6	8.4	58
60	8.4	8.6	7.4	8.2	5.1	6	7.8	5.8	5.1	6.8	8	7.5	5.8	6.1	5.2	7.9	7.5	6.4	9.9	9.5	7.7	60
62	7.4	7.7	6.9	7.2	4.5	5.1	7.1	5	4.5	5.7	7.1	6.8	5	5.3	4.6	7.3	6.8	5.6	9.4	8.8	7	62
64	6.5	6.8	6.3	6.3	4	4.4	6.3	4.3	3.9	4.9	6.5	6.1	4.3	4.6	4	6.5	6.1	4.8	8.7	7.8	6.3	64
66	5.6	5.8	5.6	5.4	3.5	3.9	5.8	3.7	3.5	4.2	5.9	5.5	3.7	3.9	3.5	5.9	5.5	4	8.4	6.9	5.7	66
68	4.8	4.9	5	4.6	3	3.3	5.2	3	3	3.5	5.3	5	3.1	3.3	3	5.4	5	3.4	7.9	6	5.1	68
70	4	4.1	4.7	3.8	2.6	2.7	4.6	2.4	2.6	2.9	4.8	4.4	2.5	2.7	2.6	4.8	4.5	2.9	7.1	5.2	4.6	70
72	3.2	3.3	4.1	3.1	2.1	2.2	4.2	1.9	2.1	2.4	4.2	4	2.1	2.2	2.2	4.4	4.1	2.3	6.2	4.5	4	72
74	2	2.6	3.7	2.4	1.7	1.7	3.7	1.5	1.7	1.9	3.8	3.6	1.5	1.7	1.8	3.9	3.7	1.8	5.5	3.7	3.5	74
76																			4.9	3	3.3	76
78																						78
80																						80
82																						82
84																						84
	4	3	4	3	3	4	3	4	3	4	3	3	4	4	3	3	3	3	3	3	3	
2#	92	100	0	100	46	92	0	92	46	100	0	0	92	100	46	0	0	100	46	92	0	2#
3#	92	92	100	92	100	100	92	100	100	100	92	100	100	100	100	92	100	100	92	92	100	3#
4#	92	92	100	92	100	100	100	100	100	100	100	100	100	100	100	100	100	100	92	92	100	4#
	5#	92	92	92	100	100	100	100	100	100	100	100	100	100	100	100	100	100	92	92	100	
6#	92	92	92	92	92	100	92	100	92	100	92	100	100	100	92	100	100	100	92	92	100	6#
7#	92	46	92	92	92	46	92	92	92	46	100	92	92	92	100	100	100	92	92	92	100	7#
8#	0	46	92	0	46	46	92	0	46	46	92	92	0	0	46	100	92	0	92	46	100	8#
	11.1	9.9	11.1	9.9	9.9	9.9	9.9	9.9	9.9	9.9	9.9	9.9	9.9	9.9	9.9	9.9	9.9	9.9	9.9	9.9	9.9	

# Load Chart - Telescopic Boom (T)

性能表 - 主臂



Unit: t

	84	84.5	86.2	86.3	87.2	87.2	88	88.1	88.1	88.7	89	89.6	91.4	92.3	92.3	93.2	93.2	94.1	95		
3																					3
3.5																					3.5
4																					4
4.5																					4.5
5																					5
6																					6
7																					7
8																					8
9																					9
10																					10
12																					12
14																					14
16	33.9	31.5	30.5	31.9	30.9	31.1	28.5	29.9	30.1	26.3	29.2	26.1	27.4	26.5	24.2	25.7	22.8				16
18	34	30.8	30.6	32.1	31	31.2	28.6	30.1	30.2	25.7	29.3	25.6	27.5	26.6	23.7	25.8	22.6	23	18	18	18
20	34.2	29.6	30.7	32.2	31.2	31.3	28.7	30.2	30.3	24.7	29.4	24	27.6	26.8	23.3	23.8	22.3	23.1	18	20	20
22	34.3	28.5	30.8	32.3	31.3	31.5	28.9	30.4	30.5	24.5	29.6	24.3	27.7	26.9	22.9	25.5	21.8	23.2	18	22	22
24	33.5	26.6	30.3	32.3	31.2	31.6	28.7	30.4	30.6	23.5	29.7	23.2	27.9	27	21.6	26.2	21.1	23.3	18	24	24
26	31.3	24.8	28.9	30.8	30.3	30.6	28	29.7	30	23	29.3	22.3	27.8	27	20.8	26.2	20.6	23.4	18	26	26
28	29.3	22.6	27.2	29	28.6	29	26.5	28.2	28.5	22.2	28.2	21.6	27.1	26.5	20.2	26	20	25.4	18	28	28
30	27	21.7	25.6	27.2	26.9	26.9	23.1	26.6	26.6	20.7	26.6	19.2	25.8	24.2	19.5	23.7	19.2	22.9	18	30	30
32	24.2	20.9	22.5	25.4	23.9	25	21.6	24.3	24.2	19.3	23.3	18.6	22.7	22.4	18.8	22.1	18.6	21.8	17.9	32	32
34	22.2	20.4	21.1	22.5	22.1	22.2	20.5	22.1	21.8	18.2	21.6	17.8	21.5	21.2	17.7	20.9	17.5	20.7	17.4	34	34
36	20.5	19.1	19.6	21	20.8	20.7	19	20.6	20.3	17.1	20.4	16.9	20.5	20.3	16.6	20	16.5	19.8	16.5	36	36
38	19.3	18.5	17.7	19.4	19.2	19.4	18	19.4	19.2	16.4	19.2	16.3	19.1	19.1	15.7	18.9	15.4	18.7	15.6	38	38
40	17.7	17.3	15.5	18.1	18.1	17.8	16	18	17.8	15.7	17.8	15.7	18.1	18	15	17.8	14.8	18.1	15	40	40
42	16.3	16.8	14.3	17.1	17.2	17	14.5	17.1	16.8	15.1	16.7	14.8	17.2	16.7	14.4	17	14.2	16.6	14.1	42	42
44	14.9	15.5	13.1	15.7	15.7	15.6	13.3	15.6	15.5	14	15.5	14	15.7	15.7	13.6	15.8	13.4	15.8	13.5	44	44
46	13.9	15	11.8	14.4	14.5	14.4	12	14.4	14.3	13.5	14.3	13.5	14.8	14.8	13	14.7	12.8	14.5	12.8	46	46
48	12.9	13.9	10.4	12.8	13	13.4	10.6	13.4	13.3	12.8	13.3	12.8	13.6	13.7	12.1	13.6	12	13.9	12	48	48
50	11.3	13.2	9.6	11.5	11.7	12.2	9.7	12	12.3	12.1	12.3	12	12.6	12.8	11.7	12.6	11.6	12.8	11.5	50	50
52	10.2	12.5	8.6	10.3	10.5	10.9	8.8	10.6	11	11.8	11.1	11.7	11.4	11.7	11.3	11.8	11.2	11.9	11.2	52	52
54	9.1	12	7.8	9.3	9.5	9.9	7.9	9.6	9.9	11.4	10.1	11.4	10.3	10.4	10.9	10.5	10.7	11	10.7	54	54
56	8.2	11.4	7.1	8.4	8.5	8.9	7.2	8.6	8.9	10.6	9.1	10.6	9.3	9.4	10.4	9.5	10.2	10	10.2	56	56
58	7.4	10.4	6.4	7.6	7.7	8	6.5	7.8	8.1	10.3	8.2	10.3	8.5	8.6	9.8	8.7	9.7	8.9	9.9	58	58
60	6.8	9.3	5.7	6.7	6.8	7.2	5.9	6.9	7.2	9.6	7.2	9.6	7.6	7.6	9.2	7.8	9.1	7.9	9	60	60
62	5.8	8.3	5.1	5.9	5.9	6.3	5.2	6.1	6.4	9.2	6.4	9.2	6.7	6.8	8.7	6.8	8.6	7.1	8.4	62	62
64	4.9	7.6	4.5	5.2	5.1	5.7	4.6	5.3	5.7	8.5	5.7	8.3	5.9	5.9	8.1	6.1	8.1	6.3	8	64	64
66	4.2	6.7	4	4.4	4.5	4.9	4.1	4.7	4.9	7.6	5	7.4	5.2	5.3	7.4	5.5	7.4	5.6	7.7	66	66
68	3.5	5.9	3.5	3.7	3.7	4.2	3.6	4	4.2	6.8	4.4	6.6	4.6	4.6	6.7	4.8	6.8	4.9	7	68	68
70	2.9	5	3.1	3.2	3.3	3.6	3.2	3.5	3.6	6.1	3.8	6	4	4.1	5.9	4.2	6.1	4.3	6.3	70	70
72	2.3	4.3	2.6	2.7	2.8	3	2.7	2.9	3	5.5	3.2	5.3	3.5	3.6	5.2	3.7	5.3	3.8	5.5	72	72
74	1.9	3.5	2.2	2.1	2.2	2.4	2.3	2.2	2.3	4.8	2.5	4.6	2.9	2.9	4.4	3.1	4.6	3.2	4.8	74	74
76	1.4	2.9	1.9	1.6	1.7	1.9	1.8	1.7	1.8	4.1	2	3.8	2.4	2.4	3.8	2.5	3.8	2.6	4.1	76	76
78		2.2	1.5			1.4	1.5			3.4	1.5	3.2	1.9	2	3.1	2.1	3.2	2.2	3.5	78	78
80										2.8	1	2.6	1.5	1.6	2.5	1.7	2.6	1.8	2.9	80	80
82										2.2		2			1.9	1.3	2	1.4	2.3	82	82
84																			1.7	84	84
2#	3	3	3	3	3	3	3	3	3	3	3	3	3	3	2	3	2	3	2	2#	2#
3#	100	100	46	92	92	100	46	92	100	92	100	100	92	92	100	92	100	92	100	100	3#
4#	100	92	100	100	100	100	100	100	100	92	100	92	100	100	100	100	100	100	100	100	4#
5#	100	92	100	100	100	100	100	100	100	92	100	92	100	100	100	100	100	100	100	100	5#
6#	100	92	92	92	100	92	100	100	100	92	100	92	92	100	92	100	100	100	100	100	6#
7#	100	92	92	92	92	100	100	100	92	92	100	92	92	92	92	100	92	100	100	100	7#
8#	0	46	92	46	46	46	92	46	46	92	46	92	92	92	92	92	100	100	100	8#	8#
9#	9.9	9.9	9.9	9.9	9.9	9.9	9.9	9.9	9.9	9.9	9.9	9.9	9.9	9.9	9.9	9.9	8.6	9	7	9#	9#



# Load Chart - Telescopic Boom + Superlift Device (TS)

起升高度曲線 - 主臂 + 超起



Unit: t

	37	37.1	37.1	38.7	42.1	42.2	42.2	42.3	42.3	47.3	47.4	47.5	48.2	49.1	50	52.5	52.6	52.6	52.6	52.7	55.2	
5	161.8	172.5	175.8																			5
6	161.2	170.9	173.5	168.4	145	155.8	155	167.2	165													6
7	160.3	169.7	171.2	155.4	136	147	154.3	165.1	165	142.1	150	154.6	140.4	138.2	126.5							7
8	152.1	154.8	152.1	146.4	127	138.9	146.8	162.6	165	132.6	142.7	154.6	132.2	128.8	126.5	125.1	135	135	135	135	118.7	8
9	142	143.5	141	137.6	115.5	130.9	138.8	140.9	143.3	124.9	136.9	150.3	123.2	121	118.9	117.2	128.3	133.9	135	135	111.2	9
10	133.4	134.1	131.1	128.5	110.6	123.4	130.1	131.2	130.8	118.1	128.3	150.8	116.6	114.4	112.4	110.7	121.1	127.9	131.2	137	105.7	10
12	117.1	115.6	111.2	114.6	108.1	110.9	113.7	113.5	111.1	105.8	112	111.2	104.9	102.5	101	99.3	108.9	111.9	111.5	109.2	95.4	12
14	102.4	100.5	96	103.8	100.4	101.1	100.7	98.6	96.1	95.2	98.8	96.4	94.4	92.3	91.4	90	98.4	97.1	96.8	94.4	86.4	14
16	90.4	88.5	84	92	91.5	90.6	89	86.8	84.3	87.2	87.2	84.7	86.6	84.8	83.7	82.5	86.9	85.6	85.2	82.8	79.3	16
18	80.4	78.7	74.1	82.3	81.9	81	79.4	77.2	74.6	79.3	77.7	75.2	78.8	77.2	76	75.2	77.5	76.2	75.8	73.4	72.8	18
20	72.3	70.4	65.7	74.1	73.9	73	71.4	69.1	66.6	72.9	69.9	67.3	72.5	71.1	70.2	69.4	69.8	68.4	68.1	65.6	67.6	20
22	65	63.1	58.4	67	67.1	66.2	64.5	62.3	59.7	66.8	63.2	60.7	66.7	65.6	64.9	64.8	63.2	61.9	61.5	59.1	62.7	22
24	58.5	56.6	51.8	60.7	61.1	60.2	58.5	56.2	53.6	61	57.5	54.9	61	61	60.3	60.2	57.6	56.3	55.9	53.4	57.8	24
26	52.4	50.5	45.7	55	55.7	54.8	53.1	50.8	48.2	55.9	52.4	49.8	55.9	56	55.4	55.2	52.7	51.3	50.9	48.5	53.4	26
28	46.4	44.6	39.8	49.5	50.7	49.9	48.2	45.9	42.9	51.4	47.8	45.2	51.4	51.5	51.7	51.3	48.3	47	46.6	44.1	50.2	28
30	40.4	38.6	33.7	44.1	46.1	45.2	43.5	41.1	37.6	47.2	43.5	40	47.3	47.5	47.7	47.4	44.4	42.8	42.3	39	46.6	30
32	33.5	31.7	26.8																			32
34				31.6	36.8	36	34.3	32	29.2	39.6	35	31.5	39.8	39.9	40.2	39.9	36.1	34.3	33.7	30.5	40.4	34
36				31.6	30.9	29.1	26.9	24.2	21.6	31.5	28.1	26.2	36.4	36.4	36.4	32.6	30.8	30.3	27.1	26.9	36.9	36
38					25.1	24.5	22.7	20.6	17.9	32.3	28.4	25	32.8	33.3	33.3	29.5	27.7	27.2	24	23.8	38	38
40										28.3	24.7	22.1	29.1	29.9	30.6	30.6	26.8	25	24.5	21.3	31.1	40
42										23.6	20.1	17.5	24.9	26.1	27	28.1	24.3	22.5	22	18.9	28.6	42
44													19.6	21.5	23	25.2	22.1	20.3	19.8	16.7	26.4	44
46																21.6	18.6	17.2	16.8	14.4	24.1	46
48																17.1	14.2	12.8	12.4	10	20.9	48
50																					17.1	50
52																						52
54																						54
56																						56
58																						58
60																						60
62																						62
64																						64
66																						66
68																						68
70																						70
72																						72
74																						74
76																						76
78																						78
80																						80
	15	16	16	15	13	14	14	14	14	12	13	13	12	12	12	11	11	11	11	11	10	
2#	0	0	46	0	0	0	0	0	46	0	0	46	0	0	0	0	0	0	46	92	0	2#
3#	0	0	46	0	0	0	0	0	46	0	0	46	0	0	0	0	0	0	92	46	46	3#
4#	0	46	46	0	0	0	46	46	46	0	46	46	0	0	0	0	92	46	46	46	0	4#
5#	46	46	46	0	0	0	46	46	46	0	46	46	0	0	0	46	92	46	46	46	46	5#
6#	46	46	0	0	46	92	46	46	46	92	46	46	100	100	100	92	46	46	46	46	100	6#
7#	46	46	0	100	92	92	46	46	0	92	46	46	92	100	100	92	46	46	46	46	100	7#
8#	46	0	0	100	92	46	46	0	0	92	46	0	92	92	100	92	46	46	46	0	100	8#
	14.3	14.3	14.3	14.3	14.3	14.3	14.3	14.3	14.3	14.3	14.3	14.3	14.3	14.3	14.3	14.3	14.3	14.3	14.3	14.3	14.3	

# Load Chart - Telescopic Boom + Superlift Device (TS)

起升高度曲線 - 主臂 + 超起



Unit: t

	57.6	57.8	57.8	57.8	57.9	57.9	59.7	59.7	60.6	60.6	62.9	62.9	62.8	62.9	63	63.8	64.6	64.7	64.7	65.5	65.7		
5																							5
6																							6
7																							7
8																							8
9		127	128.3	128.3	128.3	125.6	110.7	110.9	108.6	108.8													9
10	95	119.8	124.8	126.8	120.6	118.4	104.4	105.3	103.5	103													10
12	90.5	108.7	110.2	109.7	107.7	106.7	95	95.5	93.1	93.2	100.7	111	88.5	91.2	96.9	90.2	83.2	88	88.5	80.8	88.1	12	
14	87.9	96.2	95.4	94.9	93.3	94.3	85.9	85.6	85.2	84.9	92	93.8	83.9	82.8	88.3	82	77.9	80.2	80.6	75	79.8	14	
16	81.7	84.7	83.9	83.4	81.7	82.7	78.4	78.5	77.3	77.7	83.2	82.3	75.3	75.7	79.5	75.1	72.5	73.4	73.8	70	72.7	16	
18	75.7	75.4	74.6	74	72.4	73.4	71.5	72	70.8	70.7	73.9	73	70.8	70.2	71.9	68.6	66.5	67.4	67.8	65.3	67.3	18	
20	69.6	67.7	66.9	66.4	64.7	65.7	65.7	66.2	65	65	66.3	65.4	66.1	64.4	64.3	64.4	62.3	63.1	63.5	61.4	62.2	20	
22	65.4	61.2	60.4	59.9	58.2	59.2	61.1	61.5	60.5	60.4	59.9	59	60.2	59.9	57.8	59.7	57.8	58.6	58.9	57.2	57.8	22	
24	59.9	55.7	54.9	54.3	52.7	53.7	56.9	57.2	56.3	56.4	54.4	53.5	57.5	56.2	52.3	55.5	54.2	54.4	54.2	53.6	53.6	24	
26	55.1	50.9	50.1	49.5	47.8	48.8	52.5	52.4	52	52.4	49.6	48.7	54.3	52.2	47.6	51.5	50.3	50.5	51.1	49.7	50.2	26	
28	50.6	46.6	45.8	45.2	43.6	44.6	48.3	48.2	48.4	48.2	45.4	42.8	50.1	48.7	43.4	48.3	47.1	47.5	47.6	46.7	46.7	28	
30	48.6	42.8	41.9	41.1	38.9	40.2	44.6	44.4	44.6	44.5	41.7	37.7	45.2	45.2	39.4	44.9	44.1	44.2	44.2	43.2	43.4	30	
32	43.9	38.4	37.3	36.6	34.4	35.7	40.9	40.7	41.1	40.8	37.5	36.3	42.4	41.9	34.8	41.8	41.4	41.1	41.5	41.1	40.4	32	
34	39.9	34.4	33.3	32.6	30.4	31.7	36.9	36.7	37.1	36.8	33.5	32.3	39.7	38.1	30.9	38	38.8	38.2	38.1	38.5	36.4	34	
36	36	30.9	29.9	29.1	27	28.3	33.4	33.2	33.6	33.3	30.1	28.9	36.2	34.6	27.4	34.5	36.3	34.7	34.6	36.4	32.9	36	
38	33.3	27.9	26.8	26.1	23.9	25.2	30.3	30.1	30.5	30.3	27	25.8	33.1	31.5	24.4	31.4	33.2	31.6	31.5	33.3	29.8	38	
40	30.9	25.1	24.1	23.4	21.2	22.5	27.6	27.4	27.8	27.5	24.3	23.1	30.3	28.7	21.6	28.7	30.4	28.9	28.7	30.6	27.1	40	
42	28.2	22.7	21.6	20.9	18.8	20.1	25.1	24.9	25.3	25.1	21.8	20.7	27.9	26.3	19.2	26.2	28	26.4	26.3	28.1	24.6	42	
44	26	20.5	19.4	18.7	16.6	17.9	22.9	22.7	23.1	22.9	19.6	18.5	25.6	24.1	17	24	25.7	24.2	24.1	25.9	22.4	44	
46	24.3	18.5	17.5	16.7	14.6	15.9	20.9	20.7	21.1	20.9	17.7	16.5	23.6	22.1	15.1	22	23.7	22.2	22.1	23.9	20.4	46	
48	22.2	16.7	15.6	14.9	12.8	14.1	19.1	18.9	19.3	19.1	15.9	14.7	21.8	20.2	13.3	20.2	21.9	20.4	20.2	22.1	18.6	48	
50	20.4	15	14	13.3	11.2	12.4	17.4	17.3	17.6	17.4	14.2	13	20.1	18.6	11.6	18.5	20.2	18.7	18.6	20.4	16.9	50	
52	16	11.8	10.9	10.3	8.7	9.8	15.5	15.4	16.1	15.9	12.7	11.5	18.6	17.1	10.1	17	18.7	17.2	17.1	18.9	15.4	52	
54							12.3	12.2	13.4	13.2	11.3	10.1	17.2	15.7	8.7	15.6	17.3	15.8	15.7	17.5	14	54	
56											9.7	8.8	14.5	13.3	7.4	14	15.9	14.5	14.4	16.2	12.7	56	
58											6.5	5.5	11.2	10.1	4.5	11.1	13.3	12.1	12	14.1	11.4	58	
60																	8.9	8.8	11.3	8.7		60	
62																						62	
64																						64	
66																						66	
68																						68	
70																						70	
72																						72	
74																						74	
76																						76	
78																						78	
80																						80	
	8	10	10	10	10	10	9	9	9	9	9	10	8	9	9	9	8	9	9	8	9		
2#	0	0	46	92	92	46	0	0	0	0	46	92	0	0	92	0	0	0	0	0	0	2#	
3#	0	92	92	46	92	92	0	0	0	0	92	92	0	0	92	0	0	0	0	0	0	3#	
4#	0	92	46	46	46	92	92	100	92	100	92	46	46	92	92	100	46	92	100	46	100	4#	
5#	92	46	46	46	46	46	100	100	100	100	46	46	92	92	46	92	100	100	100	100	100	5#	
6#	92	46	46	46	46	46	100	92	100	100	46	46	92	92	46	92	100	100	92	100	100	6#	
7#	92	46	46	46	46	46	92	92	100	92	46	46	92	92	46	92	92	92	92	100	92	7#	
8#	92	46	46	46	46	0	0	0	0	0	46	46	92	46	0	46	92	46	46	92	0	8#	
	14.3	14.3	14.3	14.3	12.8	12.8	14.3	14.3	14.3	14.3	12.8	12.8	12.8	12.8	12.8	12.8	12.8	12.8	12.8	12.8	12.8		

## Load Chart - Telescopic Boom + Superlift Device (TS)

起升高度曲線 - 主臂 + 超起



Unit: t

	66.4	66.5	66.6	68	68.1	68.2	68.1	68.2	68.9	69.1	69.8	69.8	70.7	70.7	70.8	70.9	71.6	71.6	71.8	71.8	72.5		
5																							5
6																							6
7																							7
8																							8
9																							9
10																							10
12	77.8	85.5	87	76.5	91	88.1	100	89	74.8	85.6	73.4	73.9	71.1	72.3	81.1	82.4	68.1	68.8	81.4	81.2			12
14	72.3	77.7	78.7	71.3	82.7	79.7	93.2	80.1	69.7	78	67.9	68.4	65.9	67.1	74.9	75.1	64	64.2	74.5	74.1	63		14
16	67.5	72	71.7	68	75.3	73.4	81.7	73.1	65	71.2	63.6	64.1	61.7	62.7	68.9	68.4	59.5	60.3	67.8	68.1	58.6		16
18	62.9	66.1	66.5	65	69.7	66.9	72.5	67.2	61.4	66.2	59.8	60.3	57.3	58.6	64	63.6	55.4	56.2	63	62.9	54.6		18
20	59.5	61.1	61.4	62.3	64.9	62.5	64.9	61.6	57.8	60.9	56.3	56.9	54	55.4	58.8	58.7	52.3	52.9	58.1	57.8	51.5		20
22	56.2	56.7	57.1	58.2	59.7	57.4	58.5	57.2	54.5	56.5	53.1	53.4	51.6	52.2	54.4	54.5	49.6	50	53.9	53.6	48.9		22
24	52.6	53.1	53.1	55.2	54.2	53	53.1	52.3	51.6	52.6	50.2	51.1	48.6	49.9	51	51	47	47.1	50.2	50.2	46.3		24
26	49.3	49.8	49.7	51.7	49.5	49.1	48.3	47.6	49.2	49.1	47.4	47.9	46.2	47.1	48.2	47.5	44.6	45	46.7	46.7	44		26
28	46.1	46.5	46.1	49.3	45.4	44.9	44.2	43.5	46	46.1	45.4	45.6	44	44.7	45	44.2	42.6	42.8	44.1	43.9	42		28
30	43.5	43.2	43.1	44.8	41.7	41.3	40.6	39.6	43.4	42.6	42.4	42.6	42.1	42	42.2	41.3	40.8	41	41.3	41.1	40.2		30
32	40.6	41	40.2	40.9	38.1	37.5	36.6	35.6	40.4	39.4	40	40.2	39.5	39.8	39.2	39	39	39.2	38.9	38.3	38.7		32
34	38.3	38.3	36.6	38.4	34.1	33.5	32.6	31.7	38.2	35.5	37.4	37.6	37	37.2	37.5	35.8	37.2	37	35.9	35.7	36.7		34
36	36.4	34.8	33.1	35.8	30.7	30.1	29.1	28.2	32.7	32	35.1	35.3	34.8	34.9	34.2	32.3	34.4	34.7	32.5	32.2	34.5		36
38	33.5	31.8	30	32.7	27.6	27	26.1	25.1	32.6	28.9	32.8	32.6	32.9	32.7	31.1	29.2	33.1	32.7	29.4	29.1	32.5		38
40	30.8	29	27.3	29.9	24.9	24.3	23.4	22.4	29.9	26.2	30	29.9	30.2	30	28.3	26.5	30.3	30.1	26.6	26.4	30.3		40
42	28.3	26.5	24.8	27.5	22.4	21.9	20.9	20	27.4	23.7	27.6	27.4	27.7	27.5	25.9	24	27.9	27.6	24.2	23.9	27.8		42
44	26.1	24.3	22.6	25.2	20.2	19.7	18.7	17.8	25.2	21.5	25.3	25.2	25.5	25.3	23.7	21.8	25.7	25.4	22	21.7	25.6		44
46	24.1	22.3	20.6	23.2	18.2	17.7	16.8	15.8	23.2	19.5	23.3	23.2	23.5	23.3	21.7	19.8	23.6	23.4	20	19.7	23.6		46
48	22.2	20.5	18.8	21.4	16.4	15.9	14.9	14	21.3	17.7	21.5	21.4	21.6	21.5	19.8	18	21.8	21.6	18.2	17.9	21.8		48
50	20.6	18.8	17.1	19.7	14.8	14.2	13.3	12.4	19.7	16.1	19.8	19.7	20	19.8	18.2	16.4	20.2	19.9	16.5	16.3	20.1		50
52	19	17.3	15.6	18.2	13.3	12.7	11.8	10.9	18.2	14.5	18.3	18.2	18.5	18.3	16.6	14.8	18.6	18.4	15	14.7	18.6		52
54	17.6	15.9	14.2	16.8	11.9	11.3	10.4	9.5	16.7	13.1	16.9	16.8	17	16.9	15.2	13.4	17.2	17	13.6	13.3	17.2		54
56	16.3	14.6	12.9	15.5	10.6	10	9.1	8.2	15.4	11.9	15.6	15.5	15.8	15.6	14	12.1	15.9	15.7	12.3	12.1	15.9		56
58	14.8	13.4	11.7	14.3	9.4	8.8	7.9	7	14.2	10.7	14.4	14.3	14.6	14.4	12.8	11	14.7	14.5	11.1	10.9	14.7		58
60	12.3	11	9.7	12.8	8.3	7.7	6.8	5.9	13.1	9.5	13.3	13.2	13.4	13.2	11.6	9.8	13.6	13.4	10	9.7	13.5		60
62				10.3	6.3	5.9	5.1	4.4			11	8.2	11.8	11.6	12.4	12.2	10.6	10.8	12.6	12.3	9		62
64									8.1	5.4	9.3	9.1	10.2	10	8.7	7.3	10.9	10.7	8	7.7	11.4		64
66																	8.4	8.3	5.7	5.4	9.2		66
68																							68
70																							70
72																							72
74																							74
76																							76
78																							78
80																							80
	7	8	8	7	8	8	8	8	7	8	7	7	6	6	7	7	6	6	7	7	6		
2#	0	0	0	0	46	46	92	92	0	0	0	0	0	0	0	0	0	0	0	0	0	2#	
3#	0	0	46	0	92	92	92	92	0	100	0	0	0	0	0	46	92	0	0	92	100	0	3#
4#	46	100	100	92	92	92	92	92	100	92	92	100	92	100	100	100	100	100	92	100	100	100	4#
	100	100	100	92	92	92	46	92	92	100	100	100	100	100	100	100	100	100	100	100	100	100	5#
6#	100	100	100	92	46	92	46	46	92	92	100	92	100	100	100	100	100	100	100	100	100	100	6#
7#	100	100	100	92	46	46	46	46	92	92	92	92	100	92	92	92	92	100	100	100	92	100	7#
8#	100	46	0	92	46	0	46	0	92	0	92	92	92	92	46	0	100	92	0	0	100	8#	
	12.8	12.8	12.8	12.8	12.8	12.8	12.8	12.8	12.8	12.8	12.8	12.8	12.8	12.8	12.8	12.8	12.8	12.8	12.8	12.8	12.8		

# Load Chart - Telescopic Boom + Superlift Device (TS)

起升高度曲線 - 主臂 + 超起



Unit: t

	72.7	73.2	73.3	73.3	73.4	73.4	74.2	74.2	74.3	75.9	76.1	76.1	76.8	76.9	77	77	77.7	78.4	78.5	78.5	78.6		
5																							5
6																							6
7																							7
8																							8
9																							9
10																							10
12																							12
14	73.2	68	75.6	87	74.1	74.7																	14
16	66.9	65.7	69.3	85	67.9	68	69.2	65.3	67.2	55.9	64.9	65	54.2	60.8	64	64.4	52.3	60	60.6	78	70	16	
18	62.2	62	64.2	77.8	63	62.9	64.1	61.1	62.2	52.3	60.3	60.3	50.6	57	59.4	59	49.4	56	56.6	72.3	65.7	18	
20	57.7	58.9	59.8	72	58.6	57.6	58.6	57.4	56.9	49.2	55.5	55.2	47.7	53.6	54.7	55.1	46.2	49.9	53.3	67.4	60.5	20	
22	53.5	57.2	55.4	66.6	54.3	53.4	54.3	53.6	52.7	46.4	51.8	51.1	44.8	50.4	51.1	51	43.6	46.4	50.1	62.3	56.3	22	
24	50.1	53.2	51.8	51.7	50.8	50	50.8	50.2	49.4	44.3	48.3	47.9	42.8	47.3	47.7	46.7	41.4	43.6	47.1	57.8	52.6	24	
26	46.4	49.1	48.2	48.3	47.1	46.3	47	47.2	45.7	41.8	45.2	44.3	40.4	44.8	44.7	44.2	39.2	39.5	44.5	53.6	48.3	26	
28	43.2	46.7	45.2	44.2	43.9	43.2	44	44.1	42.7	39.7	42.2	41.6	38.7	42.5	41.6	40.9	37.5	36.7	42.5	47.9	44.2	28	
30	40.6	44.2	41.9	40.5	41.5	39.9	40.2	41.5	39.6	38	39.5	38.7	37	40	39.1	38.6	35.9	34.5	40	42.6	39.3	30	
32	38.3	39.8	38.7	36.6	38.4	36	36.3	39.1	35.7	36.6	36.8	35.7	35.3	37.6	36.6	35.5	34.3	32.6	37.5	39.6	36.2	32	
34	35.8	36	35	33.2	34.7	32.6	32.9	36.7	32.3	35	34.6	32.3	34.1	35.2	34.2	32.1	32.9	31.6	35.3	36.3	33.2	34	
36	32.4	32.6	31.5	29.7	31.3	29.2	29.6	33.2	29.1	33.6	31.3	29.3	32.8	33	31.4	29.1	31.1	30.3	32.5	30.5	30.2	36	
38	29.3	29.7	28.4	26.7	28.2	26.2	26.5	30.2	26	31.7	28.2	26.3	31.3	30.3	28.3	26.1	30.7	29	29.4	27.5	27.3	38	
40	26.6	27.1	25.7	24	25.5	23.4	23.8	27.4	23.3	29.4	25.5	23.5	29.5	27.6	25.6	23.4	29.5	26.4	26.7	24.8	24.6	40	
42	24.1	24.7	23.2	21.5	23	21	21.4	25	20.9	26.9	23	21.1	27.1	25.1	23.2	21	27.2	24	24.2	22.4	22.1	42	
44	21.9	22.6	21	19.3	20.8	18.8	19.2	22.8	18.7	24.7	20.8	18.9	24.9	22.9	21	18.8	25	21.9	22	20.2	19.9	44	
46	19.9	20.7	19.1	17.3	18.8	16.8	17.2	20.8	16.7	22.7	18.8	16.9	22.9	20.9	19	16.8	23	20	20	18.2	18	46	
48	18.1	19	17.2	15.5	17	15	15.4	18.9	14.9	20.9	17	15.1	21	19.1	17.2	15	21.2	18.3	18.2	16.4	16.2	48	
50	16.4	17.4	15.6	13.9	15.4	13.4	13.8	17.3	13.2	19.2	15.4	13.5	19.4	17.4	15.5	13.3	19.5	16.6	16.6	14.7	14.5	50	
52	14.9	15.8	14.1	12.4	13.8	11.9	12.2	15.8	11.7	17.7	13.9	12	17.8	15.9	14	11.8	18	15	15.1	13.2	13	52	
54	13.5	14.4	12.7	11	12.4	10.5	10.8	14.4	10.3	16.3	12.5	10.6	16.4	14.5	12.6	10.4	16.6	13.6	13.7	11.8	11.6	54	
56	12.2	13.1	11.4	9.7	11.2	9.2	9.6	13.1	9.1	15	11.2	9.3	15.1	13.2	11.3	9.2	15.3	12.3	12.4	10.5	10.3	56	
58	11	11.9	10.2	8.5	10	8	8.4	11.9	7.9	13.8	10	8.1	13.9	12	10.1	8	14.1	11.1	11.2	9.3	9.1	58	
60	9.9	10.7	9.1	7.4	8.9	6.9	7.3	10.8	6.8	12.7	8.9	7	12.8	10.9	9	6.9	13	9.9	10.1	8.2	8	60	
62	8.9	9.7	8.1	6.4	7.8	5.9	6.2	9.7	5.7	11.7	7.9	6	11.8	9.9	8	5.8	11.9	8.9	9	7.2	7	62	
64	7.9	8.7	7.1	5.4	6.9	4.9	5.3	8.8	4.8	10.7	6.9	5	10.8	8.9	7	4.9	11	7.9	8.1	6.2	6	64	
66	6.4	7.8	6.1	4.5	6	4	4.4	7.9	3.9	9.8	6	4.1	9.9	8	6.1	4	10.1	7	7.2	5.3	5.1	66	
68			3.6	2.2	3.5	1.9	2.9	5.8	2.6	8.6	5.1	3.3	9.1	7.2	5.3	3.1	9.2	6.1	6.3	4.5	4.3	68	
70									6.4	6.4	3.4	1.8	7.3	5.7	4.2	2.3	8	5.3	5.5	3.7	3.5	70	
72																	5.8		4	2.4	2.3	72	
74																						74	
76																						76	
78																						78	
80																						80	
	7	6	7	7	7	7	6	6	6	5	6	6	5	5	6	6	5	5	5	7	6		
2#	0	0	46	92	46	92	100	0	100	0	46	92	0	0	46	100	0	0	46	92	92	2#	
3#	100	46	92	92	92	92	92	100	92	46	100	100	46	100	100	100	46	92	92	92	92	3#	
4#	100	92	92	92	92	92	92	92	92	100	100	100	100	100	100	100	100	92	92	92	92	4#	
	5#	100	92	92	92	92	92	92	92	100	100	100	100	100	100	100	100	100	92	92	92	5#	
6#	100	92	92	46	92	92	46	92	92	100	92	92	100	100	100	92	100	92	92	92	92	6#	
7#	100	92	46	46	92	46	46	92	46	92	92	46	100	92	92	46	100	92	92	46	92	7#	
8#	0	92	46	46	0	0	46	46	0	92	0	0	92	46	0	0	100	92	46	46	0	8#	
	12.8	12.8	12.8	12.8	12.8	12.8	12.8	12.8	11.1	12.8	11.1	11.1	12.8	12.8	11.1	11.1	11.1	12.8	12.8	11.1	12.8		

## Load Chart - Telescopic Boom + Superlift Device (TS)

起升高度曲線 - 主臂 + 超起



Unit: t

	79.4	79.3	79.5	81.2	81.2	81.1	81.3	82.1	82.1	82	82	82.2	82.2	83	82.8	82.9	83.1	83.5	83.6	83.7	84		
5																						5	
6																						6	
7																						7	
8																						8	
9																						9	
10																						10	
12																						12	
14																						14	
16	64.1	53.6	63.1	58.1	62	51.8	61.4	56.6	61.4	50	51.5	60.2	60.3	54.9	48.9	50	59.8	60.8	62.6	48.5	58.4	16	
18	59.4	50.7	58.4	54.3	57.8	48.5	56.9	52.8	56.9	46.6	48.2	55.8	55.9	51.2	45.5	46.5	55.4	57.5	58.8	45.1	54.1	18	
20	55	47.4	54	51.1	53.2	45.6	52.6	48.6	52.3	44	45.3	51.9	52	48.1	42.9	43.9	51.3	53.4	55	42.6	50.7	20	
22	51	44.9	50	47.7	51	43.1	48.6	44.5	48.4	41.6	42.7	48	48.1	45.1	40.7	41.6	47.4	50.6	51.5	40.4	47.1	22	
24	48	42.2	48	45.1	45.8	40.8	45.4	43.9	45.6	39.3	40.7	44.8	44.9	42.6	38.5	39.3	44.3	47.4	48.6	38.2	43.9	24	
26	44.3	40.1	45	42.7	43.2	38.8	42.8	41.5	43	37.3	38.4	42.3	42.3	40.3	36.3	37.2	41.7	44.5	46.1	36.3	41.4	26	
28	42.1	38.4	42.6	40.7	40.9	36.9	39.8	39.5	40	35.6	36.7	39.3	39.4	38.4	34.5	35.6	38.8	42.5	43.9	34.4	38.7	28	
30	39.2	36.7	39.1	38.4	38.4	35.3	37.3	37.8	37.7	34	34.9	37.1	37.1	36.4	33.2	34	36.6	40.4	40.5	32.9	36	30	
32	36.6	35	36.2	36	36	33.8	35.1	35.5	35.1	32.6	33.5	34.5	34.5	34.8	31.9	32.4	34.2	37.5	36.1	31.6	34	32	
34	33.2	33.7	32.9	34.1	33.2	32.5	32.9	33.7	32.9	31.3	32.1	32.8	32.6	33.3	30.6	31.1	32.5	34.4	33.6	30.3	32.1	34	
36	30.2	32.5	29.9	32	30.2	31.2	30	31.6	30	30.1	30.9	30	29.7	31.4	29.5	30	29.7	31.1	31	29.2	29.8	36	
38	27.4	31.3	27.2	29.4	27.5	30	27.3	29.5	27.3	28.9	29.9	27.3	27	29.6	28.5	28.8	27.1	29.3	28.3	28.3	27.2	38	
40	24.7	28.5	24.4	26.7	24.8	28.7	24.6	26.8	24.7	27.9	28.6	24.8	24.5	26.9	27.3	27.8	24.6	27.8	25.8	27.1	24.8	40	
42	22.2	26.1	22	24.2	22.4	26.3	22.2	24.3	22.3	26.4	26.2	22.3	22.1	24.5	26.4	26.3	22.2	25.3	23.3	26.2	22.4	42	
44	20	23.8	19.8	22	20.2	24.1	20	22.1	20.1	24.2	23.9	20.1	19.9	22.3	24.3	24.1	20	23.1	21.1	24.2	20.2	44	
46	18	21.8	17.8	20	18.2	22.1	18	20.1	18.1	22.2	21.9	18.1	17.9	20.3	22.3	22.1	18	21.1	19.2	22.2	18.2	46	
48	16.2	20	16	18.2	16.4	20.2	16.2	18.3	16.3	20.4	20.1	16.3	16.1	18.5	20.5	20.3	16.2	19.3	17.3	20.4	16.4	48	
50	14.6	18.4	14.4	16.4	14.8	18.6	14.6	16.7	14.6	18.7	18.5	14.7	14.4	16.8	18.9	18.6	14.6	17.6	15.7	18.8	14.7	50	
52	13.1	16.8	12.9	15	13.2	17	13	15.1	13.1	17.2	16.9	13.2	12.9	15.3	17.3	17.1	13	16.1	14.2	17.2	13.2	52	
54	11.7	15.4	11.5	13.6	11.9	15.6	11.6	13.7	11.7	15.8	15.5	11.8	11.5	13.9	15.9	15.7	11.6	14.7	12.8	15.8	11.8	54	
56	10.4	14.1	10.2	12.3	10.6	14.3	10.4	12.5	10.4	14.5	14.2	10.5	10.2	12.6	14.6	14.4	10.4	13.4	11.5	14.5	10.5	56	
58	9.2	12.9	9	11.2	9.4	13.1	9.2	11.3	9.2	13.3	13	9.3	9	11.4	13.4	13.2	9.2	12.2	10.3	13.3	9.3	58	
60	8.1	11.8	7.9	10	8.3	12	8.1	10.1	8.1	12.2	11.9	8.2	7.9	10.3	12.3	12.1	8.1	11.1	9.2	12.2	8.2	60	
62	7.1	10.8	6.8	9	7.2	11	7	9.1	7.1	11.1	10.9	7.2	6.9	9.3	11.3	11	7	10.1	8.2	11.2	7.2	62	
64	6.1	9.8	5.9	8	6.3	10	6.1	8.1	6.1	10.2	9.9	6.2	5.9	8.3	10.3	10	6.1	9.1	7.2	10.2	6.2	64	
66	5.2	8.9	5	7.1	5.4	9.1	5.2	7.2	5.2	9.2	9	5.3	5	7.4	9.4	9.1	5.2	8.2	6.3	9.3	5.3	66	
68	4.3	8.1	4.1	6.3	4.5	8.3	4.3	6.4	4.4	8.4	8.2	4.5	4.2	6.5	8.6	8.3	4.3	7.4	5.4	8.5	4.5	68	
70	3.6	7.3	3.3	5.5	3.7	7.5	3.5	5.4	3.6	7.4	7.4	3.7	3.4	5.7	7.8	7.5	3.5	6.6	4.6	7.7	3.7	70	
72	2.8	6	2.6	4.7	3	6.7	2.8	4.9	2.9	6.9	6.6	2.9	2.7	5	7	6.7	2.8	5.8	3.9	6.9	3	72	
74				3.8	2.3	5.4	2.1	4.1	2.2	6	5.8	2.2	2	4.3	6.3	6	2.1	5.1	3.2	6.2	2.2	74	
76																		4.2	2.5	5.3	1.6	76	
78																						78	
80																						80	
	6	5	6	5	6	5	5	5	5	5	5	5	5	5	4	5	5	5	5	6	4	5	
2#	100	0	100	46	92	0	92	46	100	0	0	92	100	46	0	0	100	46	92	0	100	2#	
3#	92	100	92	100	100	92	100	100	100	92	100	100	100	100	92	100	92	100	92	100	100	3#	
4#	92	92	92	100	100	100	100	100	100	100	100	100	100	100	100	100	100	92	92	100	100	4#	
5#	92	92	92	100	100	100	100	100	100	100	100	100	100	100	100	100	100	92	92	100	100	5#	
6#	92	92	92	92	92	100	92	100	92	100	100	100	92	100	100	100	100	92	92	100	100	6#	
7#	46	92	92	92	46	92	92	92	46	100	92	92	92	100	100	100	92	92	92	100	100	7#	
8#	46	92	0	46	46	92	0	46	46	92	92	0	0	46	100	92	0	92	46	100	0	8#	
	11.1	11.1	11.1	11.1	11.1	11.1	11.1	11.1	11.1	11.1	11.1	11.1	11.1	11.1	11.1	11.1	11.1	11.1	11.1	11.1	11.1		

# Load Chart - Telescopic Boom + Superlift Device (TS)

起升高度曲線 - 主臂 + 超起

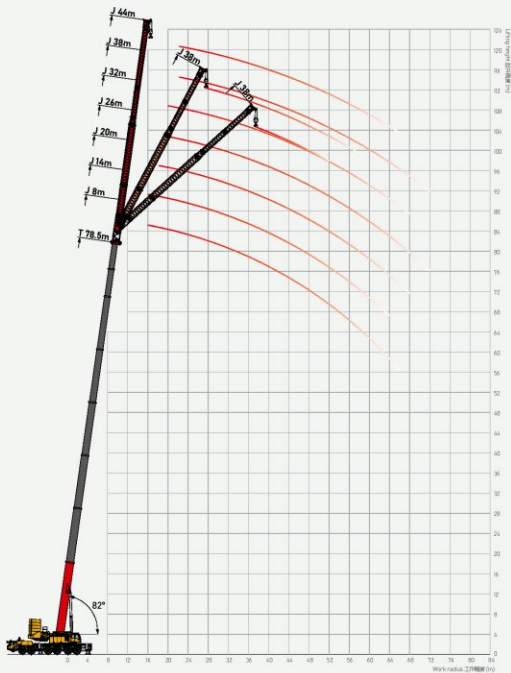


Unit: t

	84.5	86.2	86.3	87.1	87.2	88	88.1	88.1	88.7	88.9	89	89.6	91.4	90.5	92.3	92.3	93.2	93.2	94.1	94.1	95		
5																							5
6																							6
7																							7
8																							8
9																							9
10																							10
12																							12
14																							14
16	62	49.2	54.6	47.8	54.1	46.5	51.5	52.6	58	45.2	51.1	46.8	45.2	45.2	44.1	55							16
18	58.5	45.7	50.9	44.7	50.5	43.5	47.8	49.1	55.1	42.3	47.2	43.8	42.3	42.3	41.2	52.6	40.1	51	38.9	48	40	18	
20	54.1	42.9	47.7	42	47.2	40.9	44.8	46	51.6	39.7	44.3	41.4	39.7	39.7	38.8	49.6	37.7	46.8	36.7	43.6	37.6	20	
22	51.1	40.8	44.8	39.8	44.7	38.7	42.4	43.2	47.9	37.7	42	39.3	37.8	37.8	36.3	46.2	35.2	43.6	34.4	41.7	35.4	22	
24	48.7	38.6	42.4	37.7	42.1	36.4	39.9	40.9	45.5	35.4	39.7	37.1	35.4	39.4	34.5	42.7	33.5	41.8	32.6	39.5	33.5	24	
26	45.4	36.5	40	35.5	39.7	34.5	37.7	38.7	42.9	33.6	37.4	35.1	33.7	33.7	32.7	39.7	31.8	39.5	31	37.2	31.3	26	
28	42.6	34.6	38.2	33.7	37.9	32.9	35.8	36.8	40.8	32	35.5	33.4	32	32	31.1	37	30.3	36.8	29.5	33.7	30.6	28	
30	40.4	33.1	36.2	32.4	35.9	31.4	34.1	34.9	37.2	30.6	33.9	32	30.7	30.7	29.9	35	29	34.2	28.3	31.8	29.9	30	
32	36	31.8	34.1	31.1	33.6	30.2	32.7	33.2	36.1	29.4	32.5	30.7	29.5	29.5	28.7	32.4	27.8	32	27.2	29	28.6	32	
34	32.9	30.6	32.1	29.8	31.8	29	31.3	31.4	34.3	28.3	31.1	29.6	28.4	28.4	27.6	30.2	26.8	30	26.2	27.8	26.8	34	
36	30.7	29.5	30.5	28.7	30.1	27.9	29.8	29.7	32.5	27.3	29.4	28.5	27.3	27.3	26.5	28.7	25.8	27.9	25.1	25.6	25	36	
38	28.1	28.3	28.1	27.6	27.8	26.8	28.1	27.9	30.8	26.2	27.8	27.6	26.2	26.2	25.5	26.2	24.8	26.1	23.8	24.8	23.8	38	
40	25.6	27.3	25.7	26.6	25.4	25.9	25.8	25.5	26.9	25.3	25.6	26.4	25.3	25.3	24.5	24.2	23.6	25.3	23	23.5	22.9	40	
42	23.2	25.3	23.4	25.4	23.2	25	23.6	23.3	24.4	24.1	23.4	24.3	24.2	24.2	23.4	22	22.8	24	22.3	22.7	22.2	42	
44	21	23.1	21.2	23.1	21	23.3	21.4	21.1	22.2	23.3	21.3	22.1	22.2	22.2	22.3	20.8	22.1	22.6	21.6	22	21.5	44	
46	19	21.1	19.2	21.1	19	21.3	19.4	19.1	20.2	21.4	19.3	20.1	20.2	20.2	20.3	20	20.4	20.6	20.6	20.3	20.4	46	
48	17.2	19.2	17.4	19.3	17.2	19.5	17.6	17.3	18.4	19.6	17.5	18.2	18.4	18.4	18.5	18.1	18.6	18.8	18.8	18.5	18.6	48	
50	15.5	17.6	15.7	17.7	15.6	17.8	16	15.7	16.7	18	15.8	16.6	16.7	16.6	16.8	17.3	16.9	17.1	17.1	16.8	17	50	
52	14	16.1	14.2	16.1	14	16.3	14.4	14.2	15.2	16.4	14.3	15.1	15.2	15	15.3	16.1	15.4	16.2	15.6	15.3	16.1	52	
54	12.6	14.7	12.8	14.7	12.7	14.9	13	12.8	13.8	15	12.9	13.7	13.8	13.5	13.9	14.6	14	14.7	14.2	13.9	15	54	
56	11.3	13.4	11.5	13.5	11.4	13.6	11.8	11.5	12.5	13.7	11.6	12.4	12.5	12.2	12.6	13.2	12.7	13.3	12.9	12.6	13.6	56	
58	10.2	12.2	10.3	12.3	10.2	12.4	10.6	10.3	11.3	12.5	10.4	11.2	11.3	10.9	11.4	12	11.5	12.1	11.7	11.4	12.4	58	
60	9	11.1	9.2	11.1	9.1	11.3	9.5	9.2	10.2	11.4	9.3	10.1	10.2	9.7	10.3	10.8	10.4	10.9	10.6	10.3	11.2	60	
62	8	10	8.2	10.1	8	10.2	8.4	8.1	9.2	10.4	8.3	9	9.2	8.6	9.3	9.7	9.4	9.8	9.5	9.3	10.1	62	
64	7.1	9.1	7.2	9.1	7.1	9.3	7.5	7.2	8.2	9.4	7.3	8.1	8.2	7.6	8.3	8.6	8.4	8.7	8.6	8.3	9.1	64	
66	6.1	8.2	6.3	8.2	6.2	8.4	6.6	6.3	7.3	8.5	6.4	7.2	7.3	6.7	7.4	7.8	7.5	7.8	7.7	7.4	8.1	66	
68	5.3	7.3	5.5	7.4	5.3	7.5	5.7	5.4	6.5	7.7	5.6	6.3	6.5	5.7	6.5	6.8	6.7	6.9	6.8	6.5	7.2	68	
70	4.5	6.5	4.7	6.6	4.5	6.7	4.9	4.6	5.7	6.9	4.8	5.5	5.7	4.9	5.8	6	5.9	6	6	5.7	6.3	70	
72	3.8	5.8	3.9	5.8	3.8	6	4.2	3.9	4.9	6.1	4	4.8	4.9	4.1	5	5.2	5.1	5.3	5.3	5	5.5	72	
74	3.1	5	3.2	5.1	3.1	5.3	3.5	3.2	4.2	5.4	3.3	4.1	4.2	3.3	4.3	4.1	4.4	4.6	4.6	4.3	4.8	74	
76	2.4	4.4	2.5	4.5	2.4	4.6	2.8	2.5	3.6	4.8	2.7	3.4	3.5	2.6	3.6	3.4	3.8	3.1	3.9	3.6	4.1	76	
78		3.8	1.9	3.8	1.8	4	2.2	1.9	2.9	4.1	2	2.8	2.9	1.9	3	2.8	3.1	2.5	3.3	3	3.1	78	
80																	2.5	2.3	2.7	2.4	2.5	80	
	5	4	5	4	5	4	5	5	5	4	5	4	4	4	4	5	4	5	4	4	4		
2#	100	46	92	46	100	46	92	100	92	46	100	100	92	100	92	100	92	100	92	100	100	2#	
3#	92	100	100	100	100	92	100	100	92	100	92	100	100	100	92	100	100	100	100	100	100	3#	
4#	92	100	100	100	100	100	100	100	92	100	100	92	100	92	100	100	100	100	100	100	100	4#	
5#	92	100	100	100	100	100	100	100	92	100	100	92	100	92	100	100	100	100	100	100	100	5#	
6#	92	92	92	100	92	100	100	100	92	100	92	92	92	92	92	100	92	100	100	100	100	6#	
7#	92	92	92	92	92	100	100	92	92	100	92	92	92	92	92	92	92	92	100	100	100	7#	
8#	46	92	46	92	46	92	46	46	92	46	92	92	92	92	92	92	92	92	92	92	92	8#	
	11.1	11.1	11.1	11.1	11.1	11.1	11.1	11.1	11.1	11.1	11.1	11.1	11.1	11.1	11.1	11.1	11.1	11.1	9.9	11.1	11.1		

## Operating Range - Telescopic Boom + Fixed Jib (TJ)

起升高度曲線 - 主臂 + 副臂



## Load Chart - Telescopic Boom + Fixed Jib (TJ)

性能表 - 主臂 + 副臂

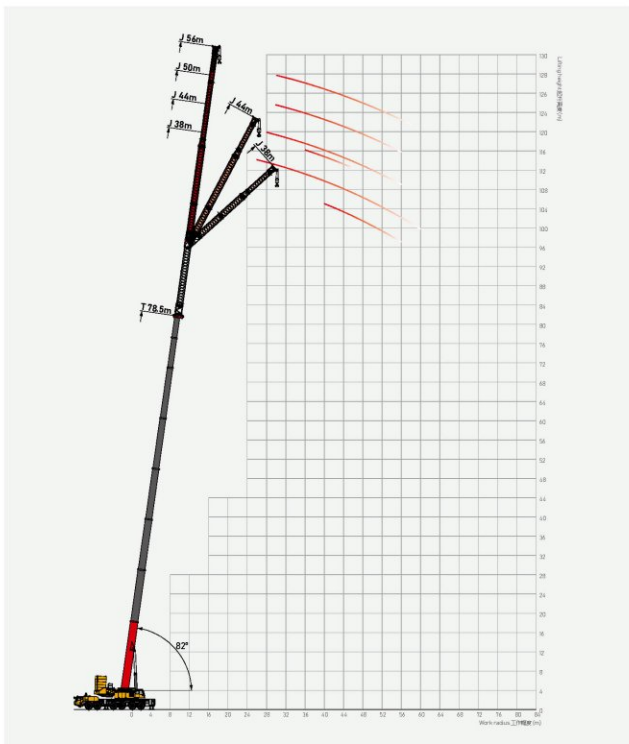


Unit :

Unit	16.4+44.0			62.9+44.0			68.1+44.0			73.3+44.0			78.5+44.0			Unit
	0°	20°	40°	0°	20°	40°	0°	20°	40°	0°	20°	40°	0°	20°	40°	
10	9.5															10
12	8.9															12
14	7.5															14
16	6.3															16
18	5.4															18
20	5.1			9.5			8.2									20
22	4.9	4.6		8.9			7.6			6.7			5.2			22
24	4.4	4.2		8.2			7			6.2			4.8			24
26	4.1	4.1		7.5			6.6			5.7			4.4			26
28	3.9	3.6		6.9			6.2			5.4			4.1			28
30	3.5	3.2		6.3			5.7			5			3.9			30
32	3.1	2.9		5.8	4.6		5.3	4		4.6			3.5			32
34	2.7	2.5		5.4	4.2		4.9	3.7		4.3	3.1		3.3			34
36	2.3	2.3	2.3	5.1	4.1		4.7	3.6		4	2.8		3.1			36
38	2.1	2.1	2.1	5	3.9		4.6	3.4		3.8	2.8		2.9			38
40	1.6	1.9	2	4.9	3.6		4.4	3.2		3.7	2.6		2.9			40
42		1.7	1.9	4.6	3.4		4.3	3		3.6	2.5		2.8			42
44		1.5	1.9	4.4	3.2		4.2	2.8		3.5	2.3		2.7			44
46			1.8	4.3	3.1	2.3	4.1	2.8	1.9	3.4	2.2		2.6			46
48			1.8	4.1	2.9	2.3	3.7	2.6	1.9	3.3	2.1		2.6			48
50				3.9	2.8	2.1	3.6	2.4	1.8	3	2		2.3			50
52				3.7	2.5	2.1	3.4	2.2	1.8	2.9	1.8		2.2			52
54				3.5	2.4	2	3.3	2.2	1.7	2.8	1.7		2.2			54
56				3.3	2.3	2	3.1	2.1	1.7	2.7	1.6		2.1			56
58				3.1	2.2	1.9	2.9	2	1.6	2.5	1.6		2			58
60				2.9	2.1	1.9	2.7	2	1.6	2.3	1.5		1.8			60
62				2.7	2	1.9	2.5	1.9	1.6	2.1	1.5		1.7			62
64				2.5	1.9	1.9	2.3	1.9	1.6	2			1.6			64
66				2.3	1.8	1.8	2.1	1.8	1.5	1.8			1.4			66
68				2.1	1.7	1.8	1.8	1.6	1.5							68
70				1.8	1.6	1.8		1.5								70
72				1.6	1.5	1.8										72
74						1.6										74
76																76
78																78
80																80
Unit	1	1	1	1	1	1	1	1	1	1	1	0	1	0	0	Unit
2#	0	0	0	92	92	92	92	92	92	92	92	92	92	92	92	2#
3#	0	0	0	92	92	92	92	92	92	92	92	92	92	92	92	3#
4#	0	0	0	46	46	46	46	46	46	46	46	46	46	46	46	4#
5#	0	0	0	46	46	46	46	46	46	46	46	46	46	46	46	5#
6#	0	0	0	46	46	46	46	46	46	46	46	46	46	46	46	6#
7#	0	0	0	46	46	46	46	46	46	46	46	46	46	46	46	7#
8#	0	0	0	46	46	46	46	46	46	46	46	46	46	46	46	8#

## Operating Range - Telescopic Boom + Boom Extension + Fixed Jib (TEJ)

起升高度曲線 - 主臂延伸節 + 副臂



# Load Chart - Telescopic Boom + Boom Extension + Fixed Jib (TEJ)

性能表 - 主臂延伸節 + 副臂

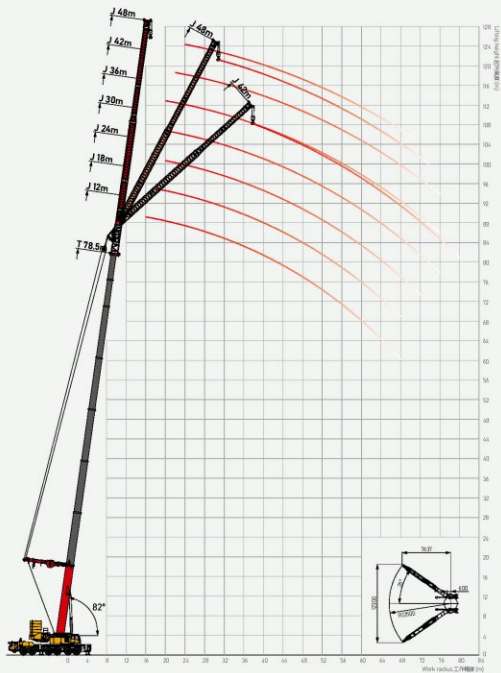


Unit: t

Reach (m)	16.4+56.0			62.9+56.0			68.1+56.0			73.3+56.0			Reach (m)
	0°	20°	40°	0°	20°	40°	0°	20°	40°	0°	20°	40°	
10													10
12													12
14	6.4												14
16	6.1												16
18	5.9												18
20	5.4												20
22	5												22
24	4.7												24
26	4.1			6.4									26
28	3.6	3.5		6.1			5.3						28
30	3.5	3.1		5.9			5.1			4.2			30
32	3.1	2.8		5.6			4.9			4			32
34	2.7	2.7		5.4			4.7			3.8			34
36	2.6	2.3	2.3	5.1			4.5			3.6			36
38	2.3	2	2.2	5	3.5		4.3			3.5			38
40	2.1	1.8	2	4.7	3.3		4.1	2.8		3.3			40
42		1.7	1.8	4.5	3.1		3.9	2.6		3.2			42
44			1.7	4.1	3		3.7	2.4		3			44
46			1.5	3.9	2.8	2.3	3.4	2.3		2.8			46
48				3.6	2.7	2.2	3.2	2.2		2.6			48
50				3.5	2.5	2.1	3	2.1		2.4			50
52				3.3	2.3	2	2.9	1.9		2.3			52
54				3.1	2.1	1.9	2.7	1.7		2.1			54
56				2.9	2	1.8	2.5	1.6		2			56
58				2.7	1.9	1.7	2.4	1.4		1.9			58
60				2.6	1.8	1.6	2.2						60
62				2.4	1.7	1.5	2.1						62
64				2.3	1.6	1.4	2						64
66				2.1			1.8						66
68				1.8									68
70													70
72													72
74													74
76													76
78													78
80													80
2#	1	1	1	1	1	1	1	1	0	1	0	0	2#
3#	0	0	0	92	92	92	92	92	92	92	92	92	3#
4#	0	0	0	46	46	46	92	92	92	92	92	92	4#
5#	0	0	0	46	46	46	46	46	46	92	92	92	5#
6#	0	0	0	46	46	46	46	46	46	46	46	46	6#
7#	0	0	0	46	46	46	46	46	46	46	46	46	7#
8#	0	0	0	46	46	46	46	46	46	46	46	46	8#

## Operating Range - Telescopic Boom + Fixed Jib + Superlift Device (TSJ)

起升高度曲線 - 主臂 + 副臂 + 超起



# Load Chart - Telescopic Boom + Fixed Jib + Superlift Device (TSJ)

性能表 - 主臂 + 副臂 + 超起

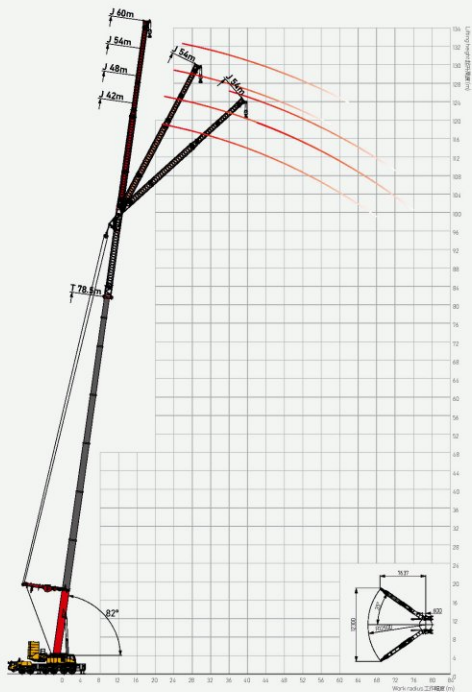


Unit: t

Unit	62.9+48.0			68.1+48.0			73.3+48.0			78.5+48.0			Unit
	0°	20°	40°	0°	20°	40°	0°	20°	40°	0°	20°	40°	
10													10
12													12
14													14
16													16
18	17.9												18
20	17			14.8									20
22	15.9			14.2			12.1			11			22
24	14.9			13.7			11.7			10.6			24
26	14			13.1			11.2			10.2			26
28	13.3			12.5			10.7			9.7			28
30	12.7			12			10.2			9.3			30
32	11.9			11.6			9.9			9			32
34	11.2	7.2		10.9	6.7		9.4			8.5			34
36	10.8	7		10.6	6.5		9	5.8		8.3	5.1		36
38	10.4	6.8		10	6.3		8.5	5.6		7.8	5		38
40	10	6.6		9.4	6.1		8	5.5		7.4	4.8		40
42	9.5	6.4		9	5.9		7.7	5.3		7.1	4.6		42
44	9.1	6.2	3.6	8.7	5.7	3.1	7.4	5.1		6.8	4.5		44
46	8.8	6	3.5	8.3	5.5	3	7	4.9		6.5	4.3		46
48	8.4	5.8	3.4	7.7	5.4	2.9	6.6	4.8		6.1	4.3		48
50	8.1	5.6	3.3	6.9	5.2	2.8	5.8	4.7		5.4	4.1		50
52	7.5	5.4	3.2	6.4	5.1	2.7	5.4	4.6		5	4		52
54	7	5.3	3.1	5.4	5	2.6	4.5	4.5		4.2	3.9		54
56	6.5	5.2	3.1	4.8	4.9	2.6	4.2	4.4		3.7	3.9		56
58	6	5	3	4.6	4.7	2.5	4	4.2		3.7	3.7		58
60	5.6	4.9	2.9	4.3	4.6	2.4	3.8	4.1		3.6	3.6		60
62	5.2	4.7	2.9	4	4.4	2.4	3.6	3.9		3.5	3.5		62
64	4.8	4.6	2.8	3.5	4.3	2.3	3.4	3.8		3.4	3.4		64
66	4	4.5	2.8	3.2	4.2	2.3	3.2	3.8		3.3	3.3		66
68	3.1	4.3	2.7	2.6	4.1	2.2	3	3.7		3.2	3.2		68
70	2.3	4	2.6	2	3.8		2.5	3.4		2.8	3		70
72	1.5	3.7	2.6		3.5			3.1			2.8		72
74		3.4			3.2			2.9			2.5		74
76		2.8											76
78		2.1											78
80													80
	2	1	1	2	1	1	1	1	0	1	1	0	
2#	92	92	92	92	92	92	92	92	92	92	92	92	2#
3#	92	92	92	92	92	92	92	92	92	92	92	92	3#
4#	46	46	46	92	92	92	92	92	92	92	92	92	4#
5#	46	46	46	46	46	46	92	92	92	92	92	92	5#
6#	46	46	46	46	46	46	46	46	46	92	92	92	6#
7#	46	46	46	46	46	46	46	46	46	46	46	46	7#
8#	46	46	46	46	46	46	46	46	46	46	46	46	8#

## Operating Range - Telescopic Boom + Boom Extension + Fixed Jib + Superlift Device (TESJ)

起升高度曲線 - 主臂延伸節 + 副臂 + 超起



# Load Chart - Telescopic Boom + Boom Extension + Fixed Jib + Superlift Device (TESJ)

性能表 - 主臂延伸節 + 副臂 + 超起

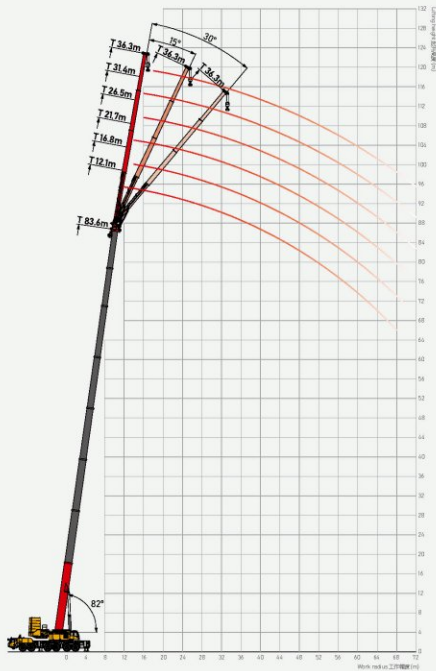


Unit: t

Unit	62.9+60.0			68.1+60.0			73.3+60.0			78.5+60.0			Unit
	0°	20°	40°	0°	20°	40°	0°	20°	40°	0°	20°	40°	
10													10
12													12
14													14
16													16
18													18
20	14.8												20
22	14.2			11.7									22
24	13.7			11.3			9.1						24
26	13.2			10.9			8.8			9			26
28	12.6			10.4			8.4			8			28
30	12			10			8.1			7.5			30
32	11.6			9.7			7.8			6.8			32
34	11	6.7		9.1			7.4			6.2			34
36	10.7	6.5		8.8	5.5		7.2	4.6		6			36
38	10.1	6.3		8.3	5.4		6.8	4.5		5.6			38
40	9.5	6.1		7.9	5.2		6.4	4.3		5.3			40
42	9.1	5.9		7.6	5.1		6.2	4.2		5.1			42
44	8.8	5.7		7.3	4.9		6	4.1		4.9			44
46	8.4	5.6		7	4.8		5.7	4		4.7			46
48	7.9	5.5		6.5	4.7		5.4	3.9		4.5			48
50	7.1	5.3		5.8	4.5		4.8	3.8		4			50
52	6.4	5.2		5.4	4.4		4.5	3.7		3.7			52
54	5.5	4.9		4.6	4.3		3.8	3.6		3.2			54
56	4.9	4.7		4.3	4.2		3.6	3.5		3			56
58	4.7	4.5		4.1	4.1		3.5	3.4		2.9			58
60	4.4	4.3		4	4		3.4	3.3		2.8			60
62	4.1	4.1		3.9	3.9		3.3	3.2		2.7			62
64	3.8	3.9		3.8	3.8		3.2	3.1					64
66	3.6	3.7		3.7	3.7								66
68	2.9	3.5											68
70													70
72													72
74													74
76													76
78													78
80													80
<b>T</b>	2	1	0	1	1	0	1	1	0	1	0	0	<b>T</b>
2#	92	92	92	92	92	92	92	92	92	92	92	92	2#
3#	92	92	92	92	92	92	92	92	92	92	92	92	3#
4#	46	46	46	92	92	92	92	92	92	92	92	92	4#
5#	46	46	46	46	46	46	92	92	92	92	92	92	5#
6#	46	46	46	46	46	46	46	46	46	92	92	92	6#
7#	46	46	46	46	46	46	46	46	46	46	46	46	7#
8#	46	46	46	46	46	46	46	46	46	46	46	46	8#

## Operating Range - Telescopic Boom + Telescopic Jib (TK)

起升高度曲線 - 主臂 + 伸縮副臂



## Load Chart - Telescopic Boom + Telescopic Jib (TK)

性能表 - 主臂 + 伸縮副臂

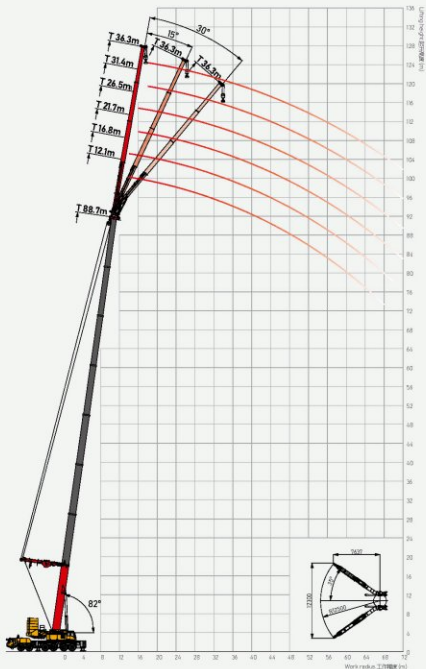


Unit: t

Unit	62.9+36.3			68.1+36.3			73.3+36.3			78.5+36.3			83.6+36.3			Unit
	2°	15°	30°	2°	15°	30°	2°	15°	30°	2°	15°	30°	2°	15°	30°	
12																12
14																14
16																16
18	7.6															18
20	7.6			7.6			7									20
22	7.5			7.6			7			6.6			5.5			22
24	7.5	5.5		7.5	5.6		7			6.6			5.5			24
26	7.5	5.4		7.5	5.4		7	5.5		6.6	5		5.5			26
28	7.1	5.2		7.3	5.2		7	5.4		6.6	5		5.5	4.6		28
30	6.9	5		7.1	5		7	5.2		6.6	4.9		5.5	4.6		30
32	6.6	4.8	3.6	6.9	4.8		6.9	5		6.6	4.8		5.5	4.5		32
34	6.3	4.6	3.4	6.6	4.6	3.5	6.7	4.8	3.6	6.5	4.7		5.5	4.4		34
36	6	4.5	3.3	6.3	4.5	3.4	6.5	4.6	3.4	6.4	4.6	3.5	5.5	4.3	3.6	36
38	5.7	4.3	3.2	6	4.4	3.3	6.2	4.5	3.3	6.3	4.5	3.4	5.5	4.3	3.5	38
40	5.4	4.2	3.1	5.8	4.3	3.2	6	4.4	3.2	6.2	4.4	3.3	5.5	4.2	3.4	40
42	5.3	4.1	3	5.6	4.2	3.1	5.8	4.3	3.1	6.1	4.4	3.2	5.5	4.2	3.3	42
44	5.1	3.9	2.9	5.4	4.1	3	5.6	4.2	3	5.9	4.3	3.1	5.5	4.2	3.2	44
46	4.9	3.7	2.7	5.2	3.9	2.9	5.4	4.1	2.9	5.6	4.2	3	5.4	4.1	3.1	46
48	4.6	3.6	2.6	5	3.7	2.7	5.2	3.9	2.8	5.4	4.1	2.9	5.3	4.1	3	48
50	4.5	3.4	2.5	4.8	3.6	2.6	5	3.7	2.7	5.3	3.9	2.8	5.2	4	2.9	50
52	4.4	3.3	2.4	4.6	3.4	2.5	4.9	3.6	2.6	5.1	3.7	2.7	5.1	3.9	2.7	52
54	4.3	3.2	2.3	4.4	3.3	2.4	4.8	3.5	2.5	5	3.6	2.6	5	3.7	2.6	54
56	4.2	3	2.2	4.3	3.2	2.3	4.6	3.4	2.4	4.8	3.5	2.5	4.9	3.6	2.5	56
58	4	2.9	2.1	4.1	3.1	2.2	4.5	3.3	2.3	4.7	3.4	2.4	4.8	3.5	2.4	58
60	3.8	2.8	2	4	3	2.1	4.4	3.2	2.2	4.6	3.3	2.3	4.6	3.4	2.3	60
62	3.6	2.7	1.9	3.9	2.9	2	4.2	3	2.1	4.4	3.2	2.2	4.5	3.3	2.3	62
64	3.5	2.6	1.8	3.8	2.7	1.9	4.1	2.8	2	4.2	3	2.1	4.3	3.2	2.2	64
66	3.4	2.5		3.7	2.6	1.8	3.9	2.7	1.9	4	2.9	2	4.1	3.1	2.1	66
68	3.2	2.3		3.6	2.5		3.8	2.6	1.8	3.7	2.8	2	3.9	3	2	68
70	3	2.2		3.5	2.3		3.5	2.5	1.7	3.4	2.7	1.9	3.7	2.9	2	70
72		2.1		3.2	2.2		3.2	2.4		3	2.6		3.5	2.8		72
2#	92	92	1	2	1	1	2	1	1	2	1	1	2	1	1	2#
3#	92	92	92	92	92	92	92	92	92	92	92	92	92	92	92	3#
4#	46	46	46	46	46	46	46	46	46	46	46	46	46	46	46	4#
5#	46	46	46	46	46	46	46	46	46	46	46	46	46	46	46	5#
6#	46	46	46	46	46	46	46	46	46	46	46	46	46	46	46	6#
7#	46	46	46	46	46	46	46	46	46	46	46	46	46	46	46	7#
8#	46	46	46	46	46	46	46	46	46	46	46	46	46	46	46	8#
9#	9	9	9	9	9	9	9	9	9	9	9	9	9	9	9	9#

## Operating Range - Telescopic Boom + Telescopic Jib + Superlift Device (TSK)

起升高度曲線 - 主臂 + 伸縮副臂 + 超起



# Load Chart - Telescopic Boom + Telescopic Jib + Superlift Device (TSK)

性能表 - 主臂 + 伸縮副臂 + 超起

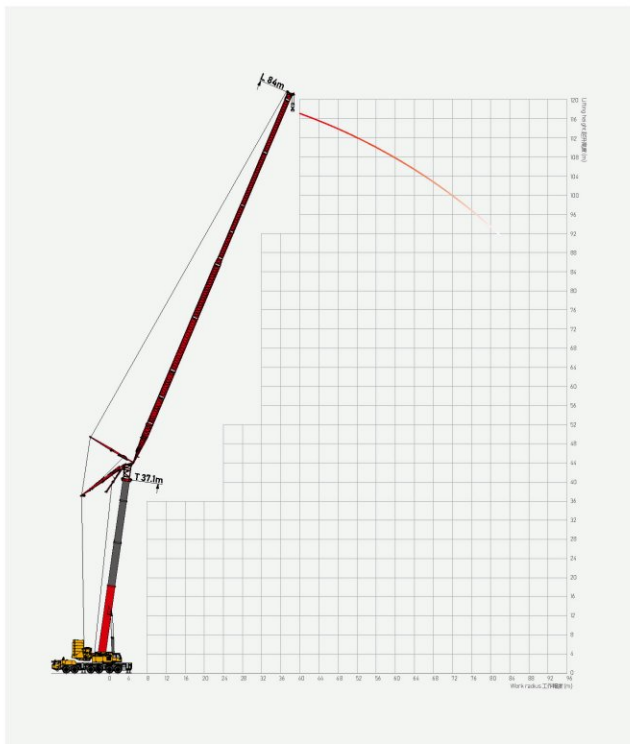


Unit: t

	62.9+36.3			68.1+36.3			73.3+36.3			78.5+36.3			83.6+36.3			88.7+36.3				
	2°	15°	30°	2°	15°	30°	2°	15°	30°	2°	15°	30°	2°	15°	30°	2°	15°	30°		
12																				12
14																				14
16																				16
18	7.7																			18
20	7.6			7.7			7.7													20
22	7.5			7.6			7.6			7.7			7.7			7.7				22
24	7.5	5.5		7.5	5.6		7.5	5.5		7.6			7.6			7.6				24
26	7.5	5.4		7.5	5.4		7.5	5.5		7.5	5.5		7.6			7.6				26
28	7.1	5.2		7.3	5.2		7.5	5.4		7.5	5.4		7.5	5.5		7.5	5.5			28
30	6.9	5		7.1	5		7.3	5.2		7.5	5.2		7.5	5.4		7.5	5.4			30
32	6.6	4.8	3.6	6.9	4.8		7	5		7.3	5		7.3	5.2		7.5	5.2			32
34	6.3	4.6	3.4	6.6	4.6	3.5	6.8	4.8	3.6	7	4.8		7.2	5		7.3	5			34
36	6	4.5	3.3	6.3	4.5	3.4	6.5	4.6	3.4	6.7	4.7	3.5	6.9	4.8	3.6	7.1	4.8			36
38	5.7	4.3	3.2	6	4.4	3.3	6.2	4.5	3.3	6.5	4.6	3.4	6.7	4.7	3.5	6.9	4.7	3.5	3.8	38
40	5.4	4.2	3.1	5.8	4.3	3.2	6	4.4	3.2	6.3	4.5	3.3	6.5	4.6	3.4	6.7	4.6	3.4	4.0	40
42	5.3	4.1	3	5.6	4.2	3.1	5.8	4.3	3.1	6.1	4.4	3.2	6.3	4.5	3.3	6.3	4.5	3.3	4.2	42
44	5.1	3.9	2.9	5.4	4.1	3	5.6	4.2	3	5.9	4.3	3.1	6.1	4.4	3.2	6.1	4.4	3.2	4.4	44
46	4.9	3.7	2.7	5.2	3.9	2.9	5.4	4.1	2.9	5.6	4.2	3	5.8	4.3	3.1	5.9	4.3	3.1	4.6	46
48	4.6	3.6	2.6	5	3.7	2.7	5.2	3.9	2.8	5.4	4.1	2.9	5.6	4.2	3	5.7	4.2	3	4.8	48
50	4.5	3.4	2.5	4.8	3.6	2.6	5	3.7	2.7	5.3	3.9	2.8	5.4	4.1	2.9	5.6	4.1	2.9	5.0	50
52	4.4	3.3	2.4	4.6	3.4	2.5	4.9	3.6	2.6	5.1	3.7	2.7	5.2	3.9	2.7	5.4	4	2.8	5.2	52
54	4.3	3.2	2.3	4.4	3.3	2.4	4.8	3.5	2.5	5	3.6	2.6	5.1	3.7	2.6	5.2	3.9	2.7	5.4	54
56	4.2	3	2.2	4.3	3.2	2.3	4.6	3.4	2.4	4.8	3.5	2.5	5	3.6	2.5	5.1	3.7	2.6	5.6	56
58	4	2.9	2.1	4.1	3.1	2.2	4.5	3.3	2.3	4.7	3.4	2.4	4.8	3.5	2.4	5	3.6	2.5	5.8	58
60	3.8	2.8	2	4	3	2.1	4.4	3.2	2.2	4.6	3.3	2.3	4.6	3.4	2.3	4.8	3.5	2.4	6.0	60
62	3.6	2.7	1.9	3.9	2.9	2	4.2	3	2.1	4.4	3.2	2.2	4.5	3.3	2.3	4.6	3.4	2.3	6.2	62
64	3.5	2.6	1.8	3.8	2.7	1.9	4.1	2.8	2	4.2	3	2.1	4.3	3.2	2.2	4.5	3.3	2.3	6.4	64
66	3.4	2.5		3.7	2.6	1.8	3.9	2.7	1.9	4	2.9	2	4.1	3.1	2.1	4.3	3.2	2.2	6.6	66
68	3.2	2.3		3.6	2.5		3.8	2.6	1.8	3.7	2.8	2	3.9	3	2	4.1	3.1	2.1	6.8	68
70	3	2.2		3.5	2.3		3.5	2.5	1.7	3.4	2.7	1.9	3.7	2.9	2	3.5	3	2	7.0	70
72		2.1		3.2	2.2		3.1	2.4		3	2.6		3.5	2.8		3.2	2.9		7.2	72
	2	1		2	1	1	2	1	1	2	1	1	2	1	1	2	1	1		
2#	92	92	92	92	92	92	92	92	92	92	92	92	92	92	92	92	92	92	92	2#
3#	92	92	92	92	92	92	92	92	92	92	92	92	92	92	92	92	92	92	92	3#
4#	46	46	46	92	92	92	92	92	92	92	92	92	92	92	92	92	92	92	92	4#
5#	46	46	46	46	46	46	92	92	92	92	92	92	92	92	92	92	92	92	92	5#
6#	46	46	46	46	46	46	46	46	46	92	92	92	92	92	92	92	92	92	92	6#
7#	46	46	46	46	46	46	46	46	46	46	46	46	92	92	92	92	92	92	92	7#
8#	46	46	46	46	46	46	46	46	46	46	46	46	46	46	46	92	92	92	92	8#
	9	9	9	9	9	9	9	9	9	9	9	9	9	9	9	9	9	9	9	

## Operating Range - Telescopic Boom + Luffing Jib (TL)

起升高度曲線 - 主臂 + 變幅副臂



# Load Chart - Telescopic Boom + Luffing Jib (TL)

性能表 - 主臂 + 變幅副臂

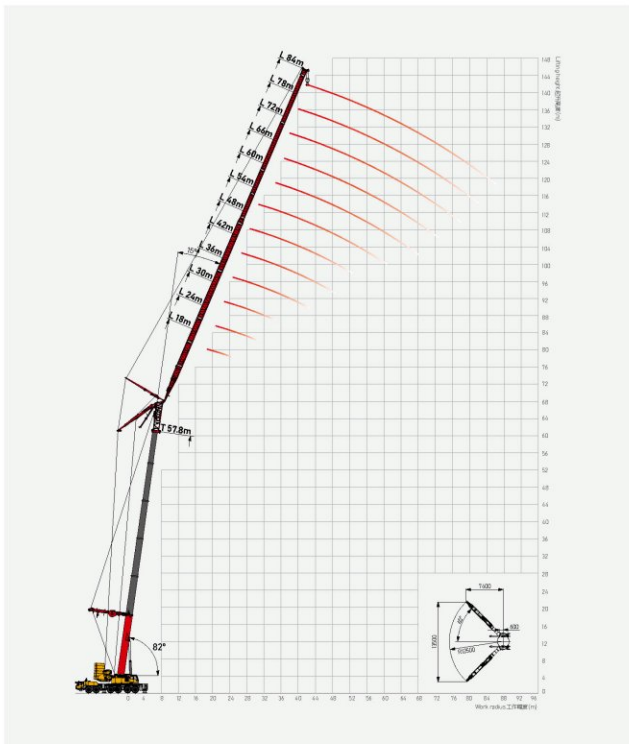


Unit: t

Unit	21.6+84			26.8+84			32.0+84			37.1+84			Unit
	68°	75°	82°	68°	75°	82°	68°	75°	82°	68°	75°	82°	
34			4.7										34
36			4.6			4.2			3.6				36
38			4.5			4.2			3.6				38
40			4.5			4.1			3.5			2.5	40
42			4.4			4			3.5			2.5	42
44			4.4			4			3.4			2.5	44
46			4.3			3.9			3.4			2.5	46
48		4.2	4.3		3.9	3.9			3.4			2.5	48
50		4.2	4.2		3.9	3.9		3.4	3.4			2.5	50
52		4.1	4.2		3.8	3.9		3.4	3.4			2.5	52
54		4.1	4.1		3.8	3.9		3.4	3.4		2.4	2.5	54
56		4	4.1		3.8	3.9		3.4	3.4		2.4	2.5	56
58		4	4.1		3.7	3.9		3.4	3.4		2.5	2.5	58
60	3.9	3.9	4.1	3.5	3.7	3.9		3.4	3.4		2.5	2.5	60
62	3.9	3.9	4.1	3.5	3.6	3.8		3.3	3.4		2.5	2.5	62
64	3.9	3.9	4	3.5	3.6	3.8	3.2	3.3	3.4		2.5	2.5	64
66	3.9	3.9	4	3.5	3.6	3.8	3.2	3.3	3.4		2.5	2.5	66
68	3.9	3.9	4	3.5	3.6	3.8	3.2	3.3	3.4	2.4	2.5	2.5	68
70	3.9	3.9	4	3.5	3.6	3.8	3.2	3.3	3.4	2.4	2.5	2.5	70
72	3.9	3.9	4	3.5	3.6	3.8	3.2	3.3	3.4	2.4	2.5	2.5	72
74	3.9	3.9	4	3.5	3.6	3.8	3.2	3.3	3.4	2.4	2.5	2.5	74
76	3.9	3.9	4	3.5	3.6	3.8	3.2	3.3	3.4	2.4	2.5	2.5	76
78	3.9	3.9	4	3.5	3.6	3.8	3.2	3.3	3.4	2.4	2.5	2.5	78
80	3.9	3.9		3.5	3.6	3.8	3.2	3.3	3.4	2.4	2.5	2.5	80
82	3.9	3.9		3.5	3.6		3.2	3.3		2.4	2.5	2.5	82
84	3.9			3.5	3.6		3	3.3		2.4	2.5		84
86	3.9			3.4			2.8	3.3		2.3	2.5		86
88				3.2			2.7			2.1			88
90										1.9			90
	1	1	1	1	1	1	1	1	1	1	1	1	
2#	0	0	0	4.6	4.6	4.6	4.6	4.6	4.6	4.6	4.6	4.6	2#
3#	4.6	4.6	4.6	4.6	4.6	4.6	4.6	4.6	4.6	4.6	4.6	4.6	3#
4#	0	0	0	0	0	0	4.6	4.6	4.6	4.6	4.6	4.6	4#
5#	0	0	0	0	0	0	0	0	0	4.6	4.6	4.6	5#
6#	0	0	0	0	0	0	0	0	0	0	0	0	6#
7#	0	0	0	0	0	0	0	0	0	0	0	0	7#
8#	0	0	0	0	0	0	0	0	0	0	0	0	8#
	9.0	9.0	9.0	9.0	9.0	9.0	9.0	9.0	9.0	9.0	9.0	9.0	

## Operating Range - Telescopic Boom + Luffing Jib + Superlift Device (TSL)

起升高度曲線 - 主臂 + 變幅副臂 + 超起



# Load Chart - Telescopic Boom + Luffing Jib + Superlift Device (TSL)

性能表 - 主臂 + 變幅副臂 + 超起

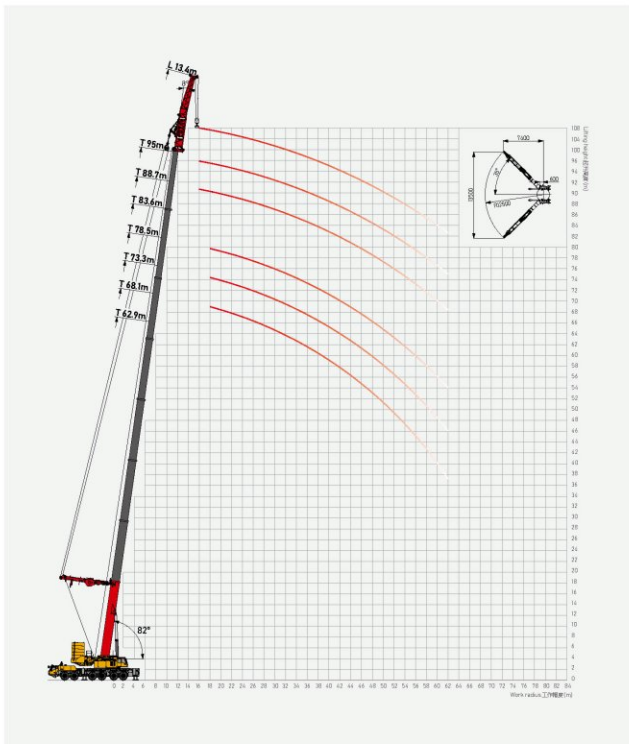


Unit: t

	42.3+84.0			47.5+84.0			53.0+84.0	52.6+84.0		57.8+84.0			
	68.0°	75.0°	82.0°	68.0°	75.0°	82.0°	68.0°	75.0°	82.0°	68.0°	75.0°	82.0°	
14													14
16													16
18													18
20													20
22													22
24													24
26													26
28													28
30													30
32													32
34													34
36			9.0			8.8							36
38			9.0			8.8			7.1				38
40			9.0			8.8			7.1				40
42			9.0			8.8			7.1			4.2	42
44			9.0			8.8			7.1			4.2	44
46			9.0			8.8			7.1			4.2	46
48			9.0			8.8			7.1			4.2	48
50		8.0	9.0			8.8			7.1			4.2	50
52		7.6	9.0		6.8	8.8			7.0			4.2	52
54		7.2	9.0		6.5	8.8		4.8	6.8			4.2	54
56		6.8	9.0		6.3	8.6		4.6	6.4		3.9	4.2	56
58		6.5	9.0		5.8	8.2		4.4	6.2		3.7	4.2	58
60		6.3	8.7		5.6	7.9		4.1	6.0		3.6	4.2	60
62		6.0	8.4		5.3	7.6		3.9	5.8		3.4	4.2	62
64	4.9	5.6	8.2		5.0	7.5		3.7	5.6		3.2	4.2	64
66	4.6	5.4	7.9	3.9	4.8	7.2		3.5	5.5		3.1	4.2	66
68	4.2	5.2	7.6	3.8	4.6	7.1		3.4	5.3		2.9	4.2	68
70	3.9	4.9	7.5	3.5	4.4	6.8	3.0	3.3	5.1		2.8	4.1	70
72	3.7	4.6	7.2	3.3	4.1	6.7	2.9	3.1	5.0		2.7	4.0	72
74	3.4	4.5	6.9	3.0	3.9	6.5	2.7	2.9	4.9		2.6	3.9	74
76	3.3	4.4	6.8	2.8	3.8	6.4	2.5	2.8	4.8		2.4	3.9	76
78	3.0	4.2	6.5	2.6	3.5	6.3	2.2	2.7	4.6		2.3	3.8	78
80	2.9	4.1	6.4	2.4	3.5	6.0	2.1	2.5	4.3		2.3	3.6	80
82	2.6	3.9	6.1	2.2	3.4	5.7	1.9	2.5	4.2		2.1	3.4	82
84	2.4	3.8	5.8	2.0	3.3	5.6	1.8	2.4	4.0		2.1	3.3	84
86	2.3	3.7		1.8	3.1	5.3	1.6	2.3			2.0	3.2	86
88	2.2	3.5		1.6	3.0		1.5	2.2			2.0		88
90	2.0	3.4		1.5	2.9			2.1			1.9		90
92	1.9							2.1			1.8		92
94	1.8												94
	1	1	1	1	1	1	1	1	1	1	1	1	
2#	46	46	46	46	46	46	46	46	46	92	92	92	2#
3#	46	46	46	46	46	46	46	46	46	46	46	46	3#
4#	46	46	46	46	46	46	46	46	46	46	46	46	4#
5#	46	46	46	46	46	46	46	46	46	46	46	46	5#
6#	46	46	46	46	46	46	46	46	46	46	46	46	6#
7#	0	0	0	46	46	46	46	46	46	46	46	46	7#
8#	0	0	0	0	0	0	46	46	46	46	46	46	8#

## Operating Range - Telescopic Boom + Superlift Device + Wind Power Jib (TSA)

起升高度曲線 - 主臂 + 風電副臂 + 超起



# Load Chart - Telescopic Boom + Superlift Device + Wind Power Jib (TSA)

性能表 - 主臂 + 風電副臂 + 超起



Unit: t

	62.9	68.1	73.3	78.5	83.6	88.7	93.5	93.2	95	
	13.4									
10										10
12										12
14	78									14
16	75	72	65	58.6						16
18	66	63.5	56.2	53.6	48	38	36	32		18
20	61.8	58.6	51.1	48.6	43.2	35.5	33.4	30.6	30	20
22	56.5	52.9	45.3	43.6	38.5	33.3	31	29.5	29.3	22
24	50.2	49	43	40.1	35.4	31.4	30.3	28.6	27.8	24
26	44.1	40.5	40.2	36.6	32	29.5	29.4	27.2	26.5	26
28	41.3	37.7	37	34.5	30.8	28.5	27.8	26.1	25.1	28
30	38.5	33.5	31.3	30.7	28.6	26.6	26	24.4	23.8	30
32	35.7	30.3	29.5	28.6	26.5	24.1	23.8	23	22.6	32
34	32.9	28	27	25.1	23	21	20.4	20.2	19.2	34
36	30	25.1	24.2	22.5	20.2	19.5	19	18.8	18.5	36
38	26.8	23.5	23	21.1	18.6	17.3	17.2	16.5	16	38
40	24.1	22	20.5	18.2	15.3	14.4	14.1	13.9	13.3	40
42	21.5	20.5	19.2	16.6	14.1	13.2	13	12.8	12.2	42
44	18.9	17	16.5	13.1	12.5	12.2	12.1	11.7	11.5	44
46	16.1	15.5	14	11	9.8	9.5	9	9	8.8	46
48	13.3	12.8	11.1	9.5	9	8.3	8.1	7.9	7.6	48
50	11.4	11.2	10.7	8.8	8.1	7.5	7	6.8	6.5	50
52	10.6	10.5	9.5	8.2	7.6	6.6	6.2	6	5.8	52
54	9.5	9.2	8.8	7.6	7	6.3	5.8	5.7	5.3	54
56	8.7	8.6	7.9	7	6.2	5.8	5.2	5	4.5	56
58	7.4	7.4	7.2	6.9	5.3	4.7	4.4	4.1	3.9	58
60	6.2	6.1	6.4	5.8	4.6	3.5	3.3	3	2.7	60
62	5.1	5	5.2	5.3	4	2.8	2.3	2.2	2	62
7	7	6	6	5	4	4	3	3	3	7
2#	92	92	92	92	92	92	100	100	100	2#
3#	92	92	92	92	92	92	100	100	100	3#
4#	46	92	92	92	92	92	92	100	100	4#
5#	46	46	92	92	92	92	92	100	100	5#
6#	46	46	46	92	92	92	92	100	100	6#
7#	46	46	46	46	92	92	92	92	100	7#
8#	46	46	46	46	46	92	92	92	100	8#
8.3	8.3	8.3	8.3	8.3	8.3	8.3	8.3	8.3	8.3	8.3





## SANY GROUP CRANE BU

### SANY Mobile Crane and Tower Crane Industrial Park

No.168 Jinzhou Avenue, Jinzhou Development Zone, Changsha City, Hunan Province, P.R. China Zip 410600

### SANY Crawler Crane Industrial Park

No. 2188 Daishan Road, Wuxing District, Huzhou City, Zhejiang Province, P. R. China Zip 313028

Consulting [sanycrane@sanygroup.com](mailto:sanycrane@sanygroup.com) (Crane BU) / [crd@sany.com.cn](mailto:crd@sany.com.cn) (IHQ)

After-sales Service 0086-400 609 8318 (Overseas)

#### Reminder:

Any change in the technical parameters and configuration due to product modification or upgrade may occur without prior notice. The machine in the picture may include additional equipment. This brochure is for reference only, and goods in kind shall prevail. Copyright at SANY. No part of this brochure may be copied or used for any purpose without written approval from SANY.

© Edited in November 2025

### 三一集團起重機事業部

三一輪式、塔式起重機事業部 中國湖南省長沙金洲門登徑金洲大道168號 郵編：410600

三一履帶式起重機事業部 中國浙江省湖州市安吉縣雲山鎮2188號 郵編：313028

諮詢：[sanycrane@sanygroup.com](mailto:sanycrane@sanygroup.com)(起重事業部) / [crd@sany.com.cn](mailto:crd@sany.com.cn)(國際總部)

售後服務：0086-400 609 8318(海外)

#### 法律提示

圖片並非實際機械，僅供參考。如有更改，恕不另行通知。本冊內容如有修改或刪減，恕不另行通知。本冊如有印刷錯誤，恕不另行通知。本冊如有印刷錯誤，恕不另行通知。

© 2025年11月10日

SANY GROUP: [www.sanygroup.com](http://www.sanygroup.com) | SANY USED CRANE: [sanysusedcranes.en.alibaba.com](http://sanysusedcranes.en.alibaba.com)

SANY CRANE



@sanycrane4878



Sany-crane



SANYCraneGlobal

