

SANY

i-Chain8 CE
宜宗重機械有限公司

SPECIFICATION



 **800 t**

 **91 m**

 **149.8 m**

台灣經銷商：宜宗重機械有限公司

宏江重機械企業有限公司

展場地址：台中市后里區三線路18-16號

展場電話：04-25590268 / 0975-193161

SAC8000T7-8

SANY ALL TERRAIN CRANE

QUALITY CHANGES THE WORLD

www.sanyglobal.com

QUALITY CHANGES THE WORLD

It is one of the core business units in SANY Group, specializing in the development and manufacturing of high-end wheel cranes, crawler cranes and tower cranes.

三一集团旗下核心事业部，专业从事各式轮式起重机、履带起重机、塔式起重机等产品的研发制造。

BETTER WORLD, BETTER SANY CRANE

SANY CRANE

QUALITY CHANGES THE WORLD



▶ CONTENTS

目錄

Highlights 整體亮點	▶ 04
Overall Dimensions 整體尺寸	▶ 08
Technical Specification 整體參數	▶ 09
Crane Introduction 整體介紹	▶ 11
Counterweight Combinations 配重組合圖	▶ 15
Jib Assembly 臂架組合	▶ 16
Working Conditions 工作組合	▶ 17

SAC800T7-8

SANY ALL TERRAIN CRANE



7 axle carrier

7種全地面配置

Double engine system

雙發

7 section 91m boom

7節主臂91m

Max. 66m fixed jib (with hydraulic adjustment)

固定副臂全配66m (帶液壓變幅)



SAC8000T7-8

58m wind power jib

風電臂 58m

Lattice type superlift

桁架式超起

**183t counterweight
(load-and-shift type)**

183噸載重移位式配重

New generation cab

全新驾驶室

Strong Lifting Capacity**紙重性能強**

Main boom - 7 section U shape profile, full extension 99m.
 Fixed jib - variable lengths from 12m to 66m, 0°/20°/40° hydraulically adjustable, max. boom plus jib length 152m.
 Superlift device - new type lattice superlift device, lifting capacities more than doubled at long boom.
 Wind power configuration - 10m-59m wind power jib, covering \approx 140m hub height wind turbine maintenance.

主起重臂：七節U型鋼，全伸臂99m。

固定吊臂：12m-66m 多種組合，0°/20°/40°可變位，最大臂長150m。

超起裝置：新型桁架式超起，吊臂段起重性能增加一倍以上。

風電工況：12m-59m 風電專用臂及副臂組成多種風電專用組合工況，最高可覆蓋140m 中心高度及以下風機部件檢修維護。

Superior Driving Capability**行駛性能卓越**

Innovative 7-axis reinforced chassis, all-wheel steering and 4-axis drive, hydraulic assist drive on the 7th axle, and a variety of steering and drive modes bring enhanced driving flexibility.
 The new intelligent multi-mode hydro-pneumatic suspension functions real-time monitoring of vehicle attitude, active lifting and variable damping adaptation, etc., making driving more comfortable and stable.

With a strong power and transmission system equipped with hydraulic torque converter and hydraulic retarder, the driving safety and smoothness are greatly improved.

Thanks to standard heavy-duty axles, 505 tires, and 4-axis mechanical main drive plus 1-axis hydraulic assist drive, the gradeability in heavy-duty condition is increased by 16% and jobsite transfer efficiency is improved significantly.

全新七軸加強型底盤結構，全輪轉向，四軸驅動，配置7軸液壓輔助驅動，多種轉向及驅動模式，行駛適應力強勁。

全新智能多模式液氣懸架系統，車體姿態實時監控，主動提升和變阻適應等功能，驾乘更舒適，行駛更穩定。

強勁動力及傳動系統，液力變力變矩，經濟駕駛，極大顯著行駛安全性和平穩性，标配配置505大輪胎，鋼製車橋，4軸機械主驅+1軸液壓輔助，轉運效率大幅提升，業務開展能力提升16%。

SAC8000T7-8
 SANY ALL TERRAIN CRANE

High Efficiency and Reliability

高效可靠

Multi-pump and multi-circuit hydraulic system, electro proportional and multi-level pressure control are applied to realize speed grading and inching mobility, achieving better performance.

The new superlift stable tensioning control technology, featuring one click auto tensioning and swing away/back, improves the operation efficiency by 20%.

Less operational constraints thanks to three outrigger spans, and three counterweight slewing radii, more suitable for working in constricted areas.

多泵、多回路液壓系統，電比例及多級壓力控制，實現速度分檔和微動優化，性能更卓越。

全新超升穩定張緊控制技術，一鍵自動張緊及收/展吊鉤，作業效率提升20%。

作業限制少，三跨支腿跨距組合，三轉配重旋轉半徑，全方位滿足狹窄場地需求。

Safety Guaranteed

安全可靠

The multifunctional wireless remote control system improves operation ease and safety.

The anti-tipping early-warning system, the safety protection program and fault diagnosis system further enhances safety.

The load moment indicator system with high precision, high stability and high intelligence is adopted to protect the lifting operation in an all-round way.

The tires are fitted with thermo and pressure sensors for timely data feedback and real-time warning.

多功能無線遙控系統，起重操作更添加方便，操作更加安全。

配備防傾倒預警系統，操作安全保護程序及故障診斷系統，保障車輛作業安全。

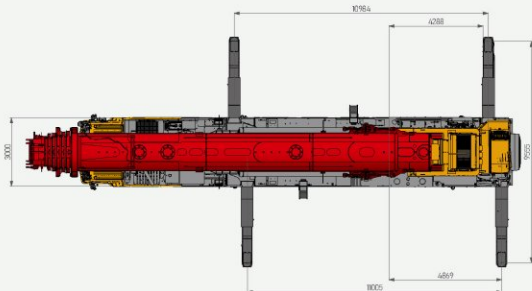
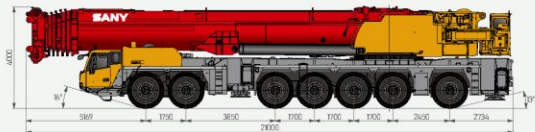
採用高精度、高穩定性、高智能化的力矩限制系統，全方位保護吊裝作業。

還配備異動溫度監測及，及時提供輪胎動態信息，異時報警，保障行車安全。



Overall Dimensions

整機尺寸



Technical Specification

整機參數

CATEGORY 類型	ITEM 項目	UNIT 單位	VALUE 參數	
CAPACITY 額定起重量	Max. lifting capacity 最大起重量	t	800	
WEIGHT 重量	Gross weight 整機總重量	kg	84000 (boom sections 2-7, main winch and front & rear outriggers removed) (拆掉2-7節臂、主卷揚、前、後液動支腿)	
POWER (CHASSIS) 機架功率參數(下車)	Engine model 發動機型號(排放標準)	-	Benz OM473E3A-6 (Euro III) 奔馳OM473E3A-6 (歐III)	
	Max. engine power 發動機最大功率	kW/rpm	480/1600	
	Max. engine torque 發動機最大輸出扭矩	N·m/rpm	3100/1300	
POWER (SUPERSTRUCTURE) 機架功率參數(上車)	Engine model 發動機型號(排放標準)	-	Benz OM926LA (Euro III) 奔馳OM926LA (歐III)	
	Max. engine power 發動機最大功率	kW/rpm	240/2200	
	Max. engine torque 發動機最大輸出扭矩	N·m/rpm	1300/(1300-1600)	
DIMENSIONS 尺寸參數	Overall length 整機全長	mm	19270 (Public notice status 公告狀態)	
	Overall width 整機全寬	mm	3000	
	Overall height 整機全高	mm	4000	
TRAVEL 行駛參數	Max. travel speed 最大行駛速度	km/h	70	
	Steering radius 轉向半徑	Min.steering radius 最小轉向半徑	m	13.5
		Min.steering radius of boom tip 臂頭最小轉向半徑	m	16.3
	Wheel formula 車輪模式	-	14×10×14	
	Min.ground clearance 最小離地間隙	mm	406	
	Approach angle 接近角	°	16	
	Departure angle 離去角	°	13	
	Max. gradeability 最大爬坡度	-	38%	
	Fuel consumption per 100km 每100公里油耗	L	≤115	
	Working temperature range 使用溫度範圍	°C	-20~+40	
Min.rated lifting radius 最小額定吊載	m	3		
MAIN PERFORMANCE 主要性能參數	Tail slewing radius 起重機尾部回轉半徑		4.3 (without CW 不带配重)	
			7.1 (with CW, F 配重前位)	
			8.1 (with CW, M 配重中位)	
			9.2 (with CW, R 配重後位)	
	Boom sections (Qty) 臂節數	-	7	
	Boom shape 臂形狀	-	U shape U型	
	Max.lifting moment 最大起重力矩	kN·m	20304	
Boom length 臂長	Basic boom 基本臂	m	17.3	
	Full-extension boom 全伸臂	m	91	
	Max. combination of boom + fixed jib 最長臂+副臂	m	150	
Outrigger span (Longitudinal+Transverse) 支腿跨距(縱+橫)	m	11×9.6		
Jib offset 副臂安裝角度	°	0, 20, 40		
AIRCONDITIONER 空調	In operator's cab 上車空調	-	Heating & cooling 製冷、製熱	
	In driver's cab 下車空調	-	Heating & cooling 製冷、製熱	

Technical Specification

整機參數



Hook 吊鈎

Rated load 額定力		Number of sheaves 滑輪數量	Rope rate 纜率	Hook weight/kg 吊鈎重量
250	○	9	18	3370
200	●	7	15	2790
100	○	3	7	990
50	○	1	3	660
16	○	0	1	700

● Standard 標配 ○ Optional 選配



Operations 主要動作參數

Item 項目	Max. single rope lifting speed (empty load) 單繩速度 (空載)	Rope diameter/length 鋼絲繩直徑 / 長度	Max. single line pull 最大單繩拉力
Main winch 主卷揚	125m/min	Φ 25mm/1065m	13.6t
Slewing speed 回旋速度		0.9r/min	
Full lifting/up/down time of boom 主臂起落時間		120s/120s	
Full extension time of boom 主臂全伸時間		1200s	
Outrigger jack 伸縮支腿	Extension 伸	50s	
	Retraction 收	55s	
Outrigger beam 水平支腿	Extension 伸	50s	
	Retraction 收	50s	

Crane Introduction

整機介紹

Driver's cab 駕駛室

- The new generation cab is a new type of steel structure independently developed by SANY, with excellent shock absorption and seating performance. With outward opening doors on both sides, the cab is equipped with driver's seat and passenger's seat with pneumatic suspension, adjustable steering wheel, large-field rearview mirrors, comfortable driver's seat with headrest, anti-fog fan, heating and cooling A/C, as well as complete control instruments and meters, so that is the driving will be more comfortable, safer, and more user-friendly.
- 駕駛室為三一自主研发全新產品，由半圓型鋼架鋼結構、透氣性和抗腐蝕性優良、撞擊外圍式密封、視窗與駕駛室形成良好採光、可調節式轉向盤、大視角後視鏡、視角廣大的視鏡等設備，可調節、冷暖空調、防眩後視鏡儀表齊全，更加舒適、安全、人性化。

Carrier frame 車架

- Designed and manufactured by SANY, the torsion-resistant box-type structure with optimized structure and low weight is welded by fine-grained high-strength steel plates. The outriggers are retracted in special fixed boxes, which are located between axle 2 and axle 3 and at the carrier frame tail, and equipped with front and rear lowering devices.
- 三一自主研发並專業化製造、結構優化、高抗彎剛性結構、細厚板高強度板焊接製作、支腿收縮在特製固定專箱中，支腿箱位於2軸和3軸之間以及車架尾部，並具備前後收縮裝置。

Chassis engine 底盤發動機

- Type: Benz OM473, electronically controlled, in-line 6-cylinder, watercooled, supercharged, intercooled, electronic injection diesel engine.
- Power: 480kW/1600rpm.
- Torque: 3100N·m/1300rpm.
- Emission standard: Euro III.
- Fuel reservoir capacity approx. 540L.
- 空冷 奔馳OM473 電控、直列六缸、水冷式、帶中冷、電系、柴油發動機。
- 功率：480kW/1600rpm。
- 最大扭距：3100N·m/1300rpm。
- 排放標準：符合歐三標準。
- 燃料有效容積：約540L。

Transmission 變速箱

- ZF auto transmission, features a wide range of speed ratio with 12 forward speeds and 2 reversing speeds, smooth gearshift. The integral hydraulic retarder is fitted for wear-free brake, and hydraulic converter for wear-free start, which makes the crane adaptable to slope climbing and high-speed traveling on public roads.
- ZF 自動變速箱，速比範圍大(12個前進檔、2個倒檔)，集成液力減速器無磨損製動，液力變速無磨損啟動，液力變速換檔制動力，可滿足低速運行爬坡又可滿足公路高速行駛。

Steering 轉向系統

- New constant pressure & flow intelligent steering system with lag-free linear tracking, precise zero deviation in steering angle, a triple steering emergency system for safer and more reliable driving.
- There are six steering modes: 1) On-road driving mode (default mode), 2) All wheel steering mode, 3) Crabbing mode, 4) Yaw free steering mode, 5) Independent rear axle steering mode, 6) Rear axle locked steering mode.
- 全新的恒壓恒流量智能轉向系統，線性無滯後、精確零偏差、三重轉向緊急系統，行駛更加安全可靠。
- 可分為六種轉向模式：1) 公路行駛模式(默认模式) 2) 全輪轉向模式 3) 蟹行模式 4) 無偏擺轉向模式 5) 獨立後軸轉向模式 6) 後軸鎖定轉向模式。

Axle 車橋

- High quality heavy-duty axles, with all axles steered. Axles 1, 2, 3, 4 are driven mechanically, and axle 7 is driven hydraulically. Axles 1, 2, 3, 4 adopt hydraulic power steering system with linkage feedback, and axles 3-7 adopt electro hydraulic control steering, with assist for speed control and selectable special steering mode, for steering ease and agility.
- 高品質重載車橋，全橋轉向。1、2、3、4機械傳動驅動，7液壓控制驅動。1、2採用液壓液體的液壓動力轉向系統，3、4、5、6、7採用電液液體動力轉向，可選擇液壓控制輔助及可選擇的特殊轉向模式，轉向輕鬆、靈活靈活。

Suspension system 懸掛系統

- The axle suspension is hydro-pneumatic suspension adjustable for height with hydraulic lock, which can realize five modes: suspension, rigid locking, automatic leveling, vehicle lifting and single point lifting. It has functions such as real-time monitoring of vehicle body posture, intelligent recognition of axle load, active elevation, and adaptive response to complex road surfaces.
- 有多種多模式液氣懸掛系統，懸掛高度可調，液壓液體鎖死、自動實時懸掛、抬升穩定、自動調平、提升抬升、單點提升五種模式，具備車載姿態實時監控，具備實時監測、自動提升和實時調節由液氣混合等功能，爬坡更舒適、行駛更穩定。

Tires 輪胎

- 14 heavy-duty tires - 18.00R25 (50S/95 R25)
- 14 噸重載輪胎-18.00R25 (50S/95 R25)。

Wheel formula 車輪格式

- 14*10*14

Outrigger 支腿

- H-type two-stage telescopic outriggers. The telescopic hydraulic system of outrigger adopts electric proportional control technology and is equipped with wireless remote control featuring high precision and easy operation, and has the function of automatic leveling.
- 活動支腿採用H型兩級伸縮支腿，支腿伸縮液壓系統採用電比例控制技術，並配備無線遙控器，並具有自動調平功能，調整精度高，操作簡便。

Crane Introduction

整機介紹

CARRIER 下集

Brake 製動系統

- Dual circuit, air brake, disc brakes available
- Service brake, air servo brakes on all wheels, dual circuits, all wheels equipped with disc brakes.
- Parking brake, actuated by pressure accumulators on axles 2 to 7.
- Assist brake: engine brake and exhaust brake, transmission hydraulic retarder brake
- 双回路、气制动、气囊盘式制动器。
- 行车制动器 所有车轮均采用气制动制动器，双回路制动系统，气囊盘式制动器。
- 驻车制动器 由气压蓄能器作用在第二至第七轴上。
- 辅助制动器 发动机上带有发动机制动及排气制动器，变速箱气囊液力缓速制动。




Electrical system 電氣系統


- 24 VDC power supply. Chassis power supply can be cut off, equipped with auto lighting system, actions of the vehicle such as throttle and outrigger control are realized by electrical control with easy and fast operation, the electrical system has strong detection, logic, operation and other capabilities, and has the functions of fault diagnosis, centralized display and self-protection.
- The chassis adopts CAN bus system, which is provided with fast, stable and accurate data transmission, multi-functional, centralized display system, high protection grade of IP65, low power consumption with a maximum of 5W, with four function keys provided in the user interface, LCD is used for display adjustable for contrast.
- 采用24V直流电源，可切断整车电源切断 配备汽车照明系统，车辆的动作，如油门、支腿等全部由电气控制实现，整动作业、转位、电气系统有强大的转位、运转等能力，具有强大的诊断、集中显示及自我保护功能。
- 底盘采用CAN总线系统，具有数据传输快速、稳定、准确等优点，多功能的集中显示系统，防护等级高，IP65，功率消耗小，最大仅有5w，在用户界面提供四个功能键，显示采用LCD液晶，对比度可调。

Crane Introduction

整機介紹

 Operator's cab 操縱室

- New generation cab, 0-20° tilttable. It adopts corrosion resistant steel plate, full coverage softened interior, panoramic sunroof, adjustable seat, making the operation comfortable and easy. Main and auxiliary touch screens are applied, realizing perfect combination of main console and operation display system. All the operation data are displayed clearly. The screen features adjustable viewing angle, multi-image and multi-angle monitoring and one-key operation. The main boom, luffing jib and superlift which are equipped with cameras for centralized monitoring. Man-machine interaction is responsive and easy. Heating and cooling A/C is provided.
- 新一代操縱室, 0°-20°可變角度, 採用防銹鋼板, 內置全覆蓋軟化內飾, 全景式天窗, 可調節座椅及多人伴位設計, 操作觸摸式、觸控、搖桿等, 實現主台與操作顯示系統有機結合, 在原有作業的全程工作數據一目了然; 觸摸式顯示屏, 觸摸可調節, 多媒體, 多角度監控與操作安全, 實現一體化操作; 主臺及副臺均配備監視攝像頭, 實現巨幅集中監視, 主平臺與操作顯示系統有機結合, 人機交互方便快捷, 配備冷暖空調。

 Superstructure engine 上車發動機

- Type: Benz OM926LA, electronically controlled, in-line 6-cylinder, watercooled, supercharged, intercooled, diesel engine.
- Power: 240kW/2200rpm.
- Torque: 1300N·m/1300-1600rpm/gm.
- Emission standard: Euro III.
- Fuel reservoir capacity approx. 350L.
- 型號: 奔馳OM926LA, 電控, 直列六缸, 水冷式, 裝置中冷, 柴油發動機。
- 功率: 240kW/2200rpm。
- 最大扭矩: 1300N·m/1300-1600rpm。
- 環保標準: 符合歐洲標準。
- 燃料有效容積: 約350L。

 Boom & telescoping system 伸縮系統

- Main boom: It is composed of 1 base boom and 6 telescopic sections. It is made of fine-grained high-strength steel plates by bending and welding. With U shape profile, it has good buckling resistance, the single cylinder automatic pining system is adopted, and a double-acting cylinder can control the extension and retraction of all boom sections to achieve a combination of multiple boom lengths, the basic boom length is 17.3m and the full extension boom length is 91m.
- Fixed jib: There are the adapter, jib head, 6m and 12m (large (small) section-area inserts, which can realize the jib length combination of 12m-66m. The offset can be changed according to the actual needs of working conditions to improve the automation level, reduce the labor intensity and improve the work efficiency.
- Superlift device: It's arranged on the left and right sides of the head of the base boom, and independent from each other. The superlift device can greatly improve the stress distribution of the boom, avoid side bending and reduce the downward deformation, so that the deflection in the long boom condition can be reduced by 20%-30% and the lifting capacity can be enhanced by more than 200%.
- 主吊臂: 由1節基本臂和6節伸縮臂組成, 採用細厚板製造板狀子臂, 彎折製成, 採用的U形截面, 抗彎性能良好, 採用單缸自動插銷系統, 一個變作用油缸可以控制所有吊臂的伸展, 達到多節臂長組合, 基本臂長17.3m, 全伸臂長91m。
- 固定吊臂: 有固定吊臂, 固定吊臂有轉接頭, 變臂吊頭, 6m及12m大小(大)截面變臂節, 可以實現12m-66m的臂長組合, 可以根據工地的實際需要而變化角度, 提高了自動化水平, 減輕了勞動強度, 提高了工作效率。
- 超起裝置: 布置於基本臂強伸左右兩側, 左右獨立, 超起裝置在吊起重臂的受力狀態得到較大改善, 避免旁彎, 減小超起臂的下陷段, 超起臂在吊臂狀態下伸展可減小20%-30%, 起重條件能提高200%以上。

 Slewing platform 轉臺結構


- Designed and manufactured by SANY, the turntable made by fine-grained highstrength steel has a better structure.
- 三一自研設計, 結構更優化, 由細晶高強鋼製成。

 Hoist 起升機構

- Main hoist: Planetary gear reducer driven by hydraulic motor and special rope groove winch drum, with a built-in brake.
- Wire rope lock: The end of the wire rope is cast and directly installed in the lock sleeve, which improves the reeving speed.
- Specification of wire rope: φ25-2160 non-rotating wire rope.
- Max. single rope speed: approx. 125m/min.
- 液壓馬達驅動的行星齒輪減速器和專用繩槽卷揚, 內置制動器。
- 鋼絲繩鎖具: 採用高強鋼製繩鎖, 鋼絲繩端環, 直接安裝於鎖套內, 提高了起卷索率的更動速度, 方便快裝。
- 鋼絲繩規格: φ25-2160, 防旋轉鋼絲繩。
- 最大單繩速: 約125m/min。

 Luffing system 變幅系統

- Double cylinders are adopted, the hydraulic system adopts dual-pump converging open hydraulic circuit, and the combination of electric proportional control, active luffing and passive luffing down can realize fast luffing at large elevation and stable slow luffing at small elevation.
- Luffing angle: 0°-84°.
- 變幅缸採用雙式變幅, 變幅角度0°-84°, 液壓系統採用雙泵合流開式液壓回路, 採用電液比例製, 動力響應和位置響應精度高, 可實現大角度快速變幅, 小角度穩定慢速變幅。

 Slewing 回轉系統

- It is composed of fixed displacement motor and slewing reducer with mature technology and widely used on wheel cranes. At the same time, it adopts external meshing with slewing bearing to realize 360° full-slewing at 0-0.9rpm and stepless speed regulation, the slewing hydraulic system adopts a closed system, which can not only avoid the throttling loss of the open system, but also deliver higher efficiency; electric proportional brake pedal is used to realize emergency braking.
- 由結構成熟, 並在汽車起重機上廣泛使用的定量馬達和回轉減速機組成, 回轉與回轉支承採用外啮合形式, 以實現360°全回轉, 回轉速度0.0-0.9rpm, 無級調速, 回轉液壓系統採用閉式系統, 既能避免開式系統的損失洩失, 又使系統具有較高的效率; 電液比例制動踏板, 可實現緊急制動。

 Counterweight 配重

- Combined variable counterweights from 0t to 180t can meet the needs of different working conditions, maximize the performance of structural parts, achieve remote removal and installation, and a good inching-movement.
- 組合式可變配重, 0t-180t多種組合方式, 可滿足不同工況的需求, 最大程度發揮結構件性能, 可遠距離卸裝及安裝, 移動便利。

Crane Introduction

整機介紹

Hydraulics 液壓系統

- The open and closed independent hydraulic system of the superstructure has the characteristics of high load sensitivity, heavy load low speed, low load high speed and high action efficiency. The luffing and telescopic system adopts an open system composed of an electro proportional pump and a self-made main valve, which has four pressure levels for selection, and different pressure levels are used for different actions, combined with the displacement of the electric proportional pump, so as to realize energy-saving and safe luffing and telescopic actions. The hoist system adopts a closed system to avoid the throttling loss of open system, so that the system has high efficiency and wide speed regulation range. The slewing system is a closed system, which can avoid the throttling loss of open system, so that the system has high efficiency and good inching-movement performance. In addition to the functions of superstructure slewing, boom luffing, extension and retraction, and main and auxiliary hoist lifting, it can also realize the functions of counterweight lifting, operator's cab rotation, and turntable locking.
- The pump, piston motor and balanced valve adopt high-quality components with high reliability; the electric proportional variable displacement piston pump can adjust the displacement of the oil pump in real time, realizing high-precision flow control and minimize energy waste; the dual-pump converging/shunting main valve independently developed by SANY has high converging efficiency of single action dual-pump and high shunting controllability of combined action dual-pump.
- The hydraulic system with passive luffing down compensation is adopted, which has good luffing down inching-movement and stability.
- The main boom adopts a single cylinder pin telescopic system.
- 開閉式相結合的半車液壓系統，具有負載調亡物件，牽制力強，轉動靈活，動作效率高的特點。其中變伸縮液壓系統採用電比例與自製平衡閥組成的開式系統，具有壓力一級穩定以及無節流下沖動作，不同動作採用不同的壓力等級，配合電比例流量閥，從而實現節流、安全的變伸和伸縮動作；起升系統採用閉式系統，不僅起升動作響應快，動作效率更高，剎車制動靈敏，回轉採用開式系統，系統給付力強而延時，動作靈敏且動作件好，除可實現上車制動、吊臂收伸、伸縮、平衡節流等功能外，還可實現平衡重升降、撐架升降、減速鎖止等的功能。
- 液壓系統、柱塞馬達及平衡閥等關鍵元件均採用第一級品牌，品質好，可靠耐用。開、閉式電比例泵、電比例射線流量閥、電比例平衡閥均採用，是大型化減少能量浪費。自主研發的雙合流/分合平衡閥，實現系統壓力與流量無沖擊以及互不干涉的自動調節，單動作聯合合流效率高，組合動作變換充分平滑的及互不干涉。設備採用自主製成型單線制液壓系統，靈敏且動作件、性能件好。平衡伸縮採用單缸缸缸式快速伸縮系統。

Control system 控制系統

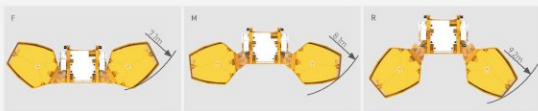
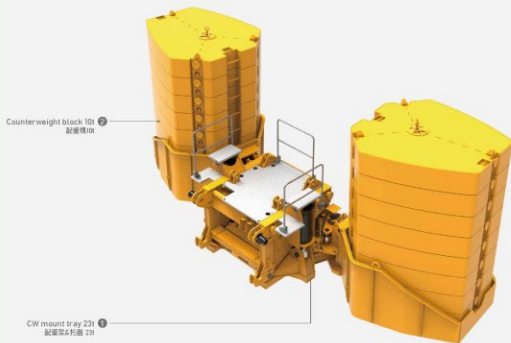
- Powered by 24 V DC, it adopts IFM controller, cable wiring, CAN-BUS control network, and combines with conventional electrical to realize the logic control and electrical proportional control functions of the system.
- It has the functions of system real-time monitoring and automatic fault diagnosis.
- Lifting, slewing and luffing are controlled by two auto resettable multidirectional electric proportional joystick, boom extension and retraction are controlled by pedal, counterweight lifting, operator's cab tilting and turntable locking are all controlled by keys on the control panel.
- The display is connected with the controller by CAN bus, and its main functions include digital adjustment and display of electric proportional control parameters, fault code display of electric proportional system and real-time detection data display of hydraulic system.
- 由24V直流電源供電，採用德製進口IFM控制器，電線布線，CAN-BUS總線控制網絡，與常規電氣相結合，完成系統的邏輯控制與電比例控制功能。
- 具有系統即時監控和故障診斷功能。
- 起升、回轉、變伸由兩個可自動復位多方向電比例手柄控制，伸縮由腳踏式將進快慢進、平衡重升降、撐架收伸均在操作面板按鈕控制。
- 顯示器由CAN總線與控制器聯接，主要功能：電比例控制參數的數字化調整和顯示，電比例系統的故障診斷顯示，液壓系統即時檢測數據的顯示。

Safety equipment 安全裝置

- A method of analytical mechanics is adopted and a load moment indicator calculation system based on the lifting mechanics model is established. Through online empty-load calibration, the lifting accuracy can reach $\pm 3\%$.
- The hydraulic system is equipped with hydraulic balance valve, relief valve, two-way hydraulic lock, etc. to realize the stability and reliability of the hydraulic system.
- The boom and luffing jib hoists are equipped with 3rd wrap indicators to prevent over-hoist-down of the wire rope.
- The boom head and jib head are equipped with AZB switch to prevent the wire rope from over winding.
- The boom head is equipped with an anemometer to detect whether the wind speed exceeds the allowable range.
- Superlift device retracting and releasing rope tension protection, fixed jib installation and lifting protection.
- 採用分析力學方法，建立了基於吊重力學模型的力矩限制計算系統，通過在線空載標定，吊重準確達到 $\pm 3\%$ 。
- 液壓系統配置液壓平衡閥、溢流閥、變向液壓閥等元件，保證液壓系統穩定可靠。
- 收卸平衡三通液壓閥，防止鋼絲繩成圈。
- 臂端平衡高度限位器，防止鋼絲繩成圈。
- 臂端設有風速儀，一旦風速超過設定值即可發出警報。
- 起點收放液壓力矩限制器、超位（位）臂架鎖、吊鉤保險器等。

Counterweight Combinations

配重組合

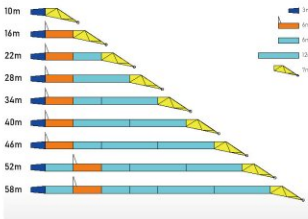


Total weight 總重量	Counterweight Combinations 配重組合
0	0
23t	①
43t	① + 2× ②
63t	① + 4× ②
83t	① + 6× ②
103t	① + 8× ②
123t	① + 10× ②
143t	① + 12× ②
163t	① + 14× ②
183t	① + 16× ②

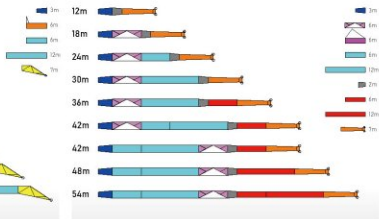
Jib Assembly

副臂組合

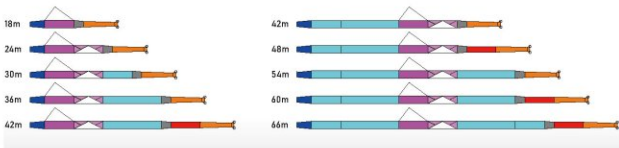
Wind power jib 風電臂



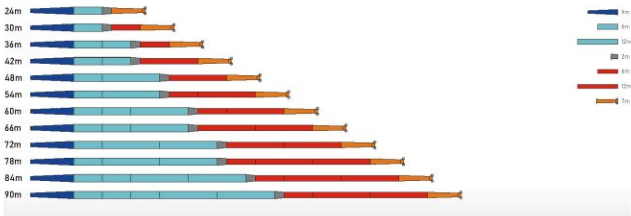
Fixed jib assembly 副臂



Fixed jib + Supertlift device assembly 副臂超起

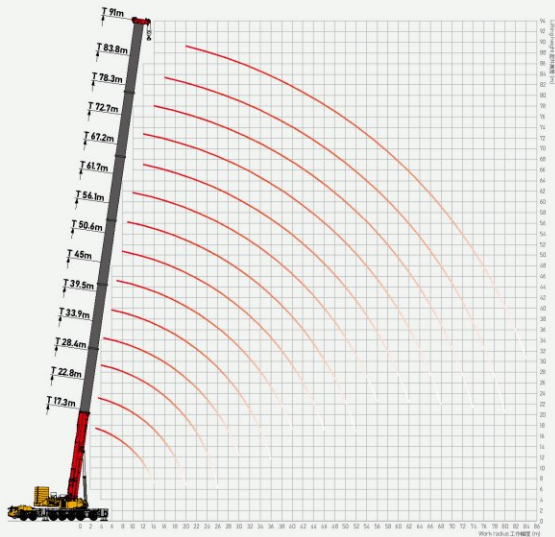


Luffing jib assembly 塔臂



Operating Range - Telescopic Boom (T)

起升高度曲線 - 主臂



Load Chart - Telescopic Boom (T)

性能表 - 主臂



Unit: t

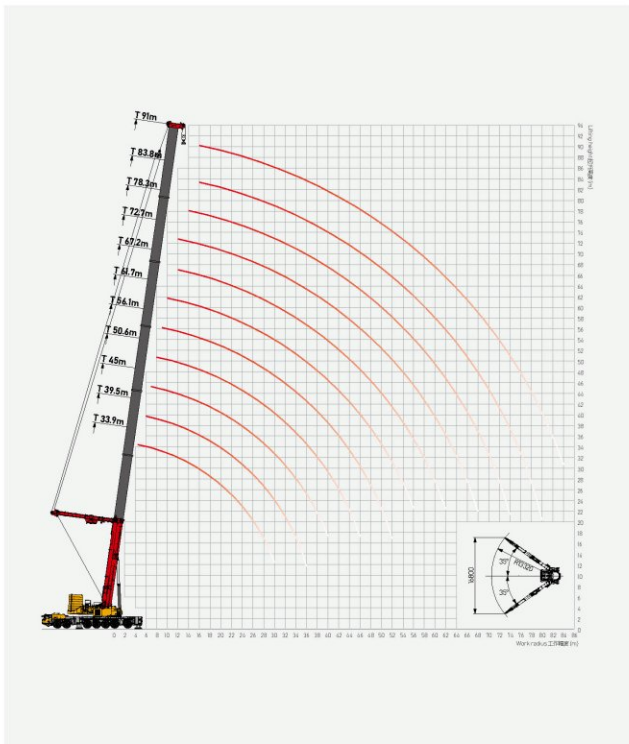
	17.3*	17.3	22.8	28.4	33.9	39.5	45	50.6	56.1	61.7	67.2	72.7	78.3	83.8	91	
2.5	800															2.5
3	400	215.4														3
3.5	370	215.4	215.4	215.4	215.4											3.5
4	340	215.4	215.4	215.4	215.4	215.4										4
4.5	310	215.4	215.4	215.4	215.4	215.4										4.5
5	280	215.4	215.4	215.4	215.4	215.4	215.4									5
6	260	215.4	215.4	215.4	215.4	215.4	215.4	200								6
7	256.5	215.4	215.4	215.4	215.4	215.4	215.4	198.8								7
8	235	215.4	215.4	215.4	215.4	215.4	215.4	198.8	165							8
9	214.6	201.1	203	201.7	203	201.8	203.1	190.4	152.2	130.4						9
10	197.3	184.5	186.5	185.1	186.5	185.2	186.7	182.6	142.4	121.7						10
12	169.1	155.9	159.1	157.7	159.1	157.8	159.4	161	122.9	110.2	97					12
14	144.9	135.8	138	136.6	137.7	139.7	138.3	140	109.2	97.5	86.6	78.3				14
16			121.5	119.8	121.3	123	121.6	123.3	96.5	89.2	78.6	70.9	65.5			16
18			107.7	106.2	107.7	109.5	108	109.8	86.1	80.5	70.1	65.1	59.1	55.5		18
20			88.4	95	96.5	98.2	96.8	98.5	78	72.1	64.9	59.3	54.9	50.5	45.3	20
22				84	85.9	88	86.3	88.2	73.5	65.6	59.7	54.7	50.8	47	42.7	22
24				74.6	76.6	78.6	76.9	79	68.4	59.6	55	50	45.8	43.8	39.9	24
26					68.7	70.8	69.9	71.1	64.3	54.5	50.5	46.2	43.2	40.9	36.3	26
28					61.8	64	65.1	64.4	60.5	50.5	46.4	43	41	38.3	34.2	28
30					56.1	58.3	60.3	58.5	57.3	46	43.4	40.1	38	34.6	32.3	30
32						54	55.3	53.5	54.2	42.8	40.2	37	36	32.8	30.3	32
34						48.8	50.8	49	50.7	40.2	37.6	34.2	33.5	30.8	28.7	34
36						44.8	46.9	45.1	46.7	38.3	34.4	32.2	31.4	28.8	26	36
38							43.1	42.5	43	36	32	30.3	29.2	27.2	24.6	38
40							40.1	40.3	40	34.3	29.7	28.6	27.4	26	23.4	40
42							31.4	38.3	37.1	32.8	28	26.9	25.5	24.5	22.3	42
44								35	34.5	31.4	26.7	25.1	23.5	22.6	21.3	44
46								32.9	32.2	30.1	25.5	22.8	21.7	21.5	20.2	46
48								17.4	30	28.9	23.8	21.6	20.7	20.1	19.2	48
50									28	27.7	22.9	20.2	19.6	18.9	18.2	50
52									24.9	26.6	21.7	19.2	18.5	17.9	17.1	52
54										24.4	20.6	18.4	17.3	17	16	54
56										23.5	19.6	17.7	16.3	16.1	15	56
58										19.1	18.7	16.4	15.3	15.3	14.2	58
60											17.7	15.6	14.4	14.5	13.1	60
62											17.1	15.5	13.4	13.7	12	62
64											13.8	14.7	11.8	12.9	10.9	64
66												13.9	10.9	11.2	10.1	66
68												13.1	10.3	10.5	9.1	68
70												8.6	9.1	10	8.2	70
72													8.3	9.2	7.5	72
74													7.8	8.7	6.9	74
76														7.8	6.1	76
78														6.9	5.8	78
80														6.3	5.5	80
82															5.1	82
84															4.3	84

Remark: * Load over rear, requiring additional equipment.

備註: * 後方超載, 需增加配重。

Operating Range - Telescopic Boom + Superlift Device (TS)

起升高度曲線 - 主臂 + 超起



Load Chart - Telescopic Boom + Superlift Device (TS)

起升高度曲線 - 主臂 + 超起

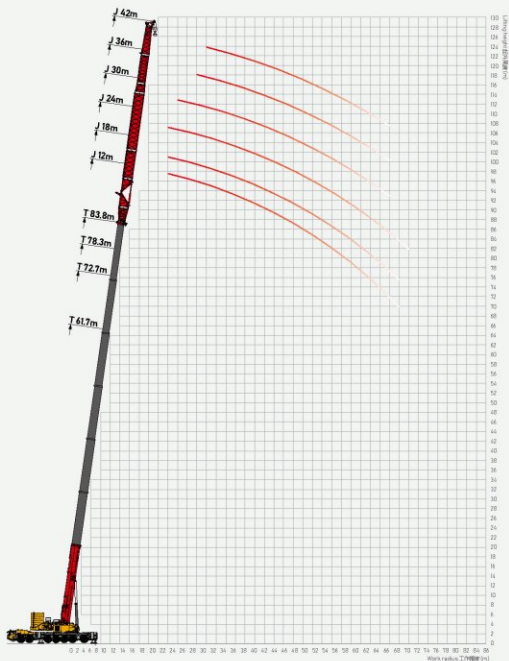


Unit: t

	33.9	39.5	45	50.6	56.1	61.7	67.2	72.7	78.3	83.8	91	
3												3
3.5												3.5
4	215.4											4
4.5	215.4	215.4										4.5
5	215.4	215.4										5
6	215.4	215.4	215.4									6
7	215.4	215.4	215.4	215.4								7
8	215.4	215.4	215.4	215.4	215.4							8
9	205.1	207.2	208	206.7	205.8	180						9
10	188.5	190.6	191.5	190.1	189.2	171.5	156.7					10
12	161.1	163.4	164.3	162.9	161.9	153.3	142.7	129.3	121.5			12
14	139.6	142	142.9	141.5	143.5	138.2	130.6	119.8	111.8	103.9	92.5	14
16	122.5	124.9	125.9	124.4	126.6	124.6	117.5	109.8	107.7	98.8	86.3	16
18	108.6	111	112.2	110.6	112.8	111.5	106.4	101.6	98.8	89.9	79.8	18
20	96.7	99.7	100.4	99.2	101.2	101.3	99.9	94.6	90.9	84.4	74.8	20
22	87.4	90	91.1	89.4	91.8	91.7	90.6	86.9	84.6	79.4	69.4	22
24	79	81.8	82.9	81.3	83.6	83.1	83.1	80.7	78.6	74.2	65.8	24
26	70.5	73.8	75.1	73.3	76	76.1	75.7	75.2	73.8	68.5	60.3	26
28	63.6	66.9	68.2	66.5	69.1	69	68.7	68.1	67.2	64.3	58.8	28
30	57.3	60.7	62.1	60.4	63	62.9	62.5	62	61.1	60	55.2	30
32		55.3	56.7	55	57.7	57.6	57.3	56.7	55.8	54.8	52	32
34		50.5	52	50.2	53	52.9	52.5	52	51.2	50.2	46	34
36		42.9	47.8	46.1	48.8	48.7	48.4	47.8	47	46	43.2	36
38			44	42.4	45.1	45	44.6	44.2	43.3	42.3	41.3	38
40			40.5	39	41.7	41.7	41.3	40.8	40	39	39.3	40
42			30.6	35.9	38.7	38.7	38.3	37.8	37	36	36.4	42
44				33.1	35.9	35.9	35.6	35	34.2	33.3	33.6	44
46				30.4	33.4	33.4	33.1	32.6	31.7	30.7	31.1	46
48				18	30.9	31	30.6	30.1	29.2	28.5	28.9	48
50					28.9	29	28.6	28.2	27.3	26.4	26.8	50
52					24.9	27	26.7	26.2	25.3	24.4	24.8	52
54						25.2	24.9	24.4	23.6	22.6	23	54
56						23.4	23.2	22.7	21.9	21	21.4	56
58						18	21.6	21.1	20.4	19.5	19.8	58
60							20.1	19.7	18.9	18	18.4	60
62							18.6	18.3	17.5	16.6	17	62
64							11.8	17	16.3	15.3	15.8	64
66								15.7	15	14.1	14.5	66
68								13.3	13.9	13	13.4	68
70								2	12.8	11.9	12.4	70
72									11.8	10.9	11.3	72
74									8.3	10	10.3	74
76										8.9	9.5	76
78										7.9	8.5	78
80										3.8	7.6	80
82											6.7	82
84											5.8	84
86											4	86

Operating Range - Telescopic Boom + Fixed Jib (TJ)

起升高度曲線 - 主臂 + 副臂



Load Chart - Telescopic Boom + Fixed Jib (TJ)

性能表 - 主臂 + 副臂



Unit: t

Reach	12						18					24					Reach	
	61.7	67.2	72.7	78.3	83.8	91	61.7	67.2	72.7	78.3	83.8	61.7	67.2	72.7	78.3	83.8		
10																		10
12																		12
14	76.2	57.8																14
16	70.4	54.1	47.4				57.9	49.5				49.7						16
18	64.7	50.4	44.9	38.9			54.7	46.3	39.6			46.6	42.5					18
20	59.7	46.8	42.1	37.1	33.4	25.6	50.4	43.1	38.3	32.7		43.6	39.8	33.0	26.0			20
22	55.1	43.8	40.1	36.0	32.2	24.8	46.4	40.6	37.2	32.3	26.0	41.1	37.4	31.7	24.7	20.3		22
24	51.7	40.9	37.2	34.8	30.8	23.9	43.4	38.0	36.1	31.5	25.8	39.2	35.4	30.6	23.6	19.6		24
26	48.4	38.2	34.8	33.7	29.7	23.3	40.5	35.7	33.8	30.7	25.7	37.0	33.6	29.2	22.7	19.1		26
28	45.0	35.5	32.4	32.3	28.7	22.6	37.6	33.4	31.6	29.5	25.6	35.0	31.7	27.6	21.7	18.4		28
30	42.2	33.1	30.2	30.2	27.6	21.8	35.2	31.3	29.5	28.1	25.5	33.3	30.1	26.2	20.8	17.8		30
32	37.9	30.3	28.2	28.3	26.5	21.2	31.7	28.9	27.7	26.3	25.3	30.7	28.0	24.6	19.9	17.3		32
34	35.7	28.4	26.4	26.7	25.4	20.3	29.8	27.2	26.0	24.8	24.2	28.9	26.2	22.9	18.7	16.6		34
36	34.4	27.1	25.2	25.1	24.2	19.4	28.6	26.2	24.8	23.3	23.1	27.5	24.8	21.6	17.8	16.0		36
38	32.3	25.4	23.6	23.7	23.1	18.6	27.0	24.7	23.4	21.9	22.1	25.7	23.3	20.6	17.0	15.4		38
40	30.0	23.8	22.0	22.0	21.9	17.6	25.3	23.0	21.7	20.3	20.9	24.0	21.8	19.3	15.9	14.9		40
42	27.3	22.1	20.5	20.4	20.7	16.7	23.3	21.2	19.9	18.8	19.9	22.1	20.2	18.0	14.9	14.3		42
44	24.9	20.5	18.8	19.0	19.6	15.8	21.5	19.6	18.5	16.9	18.8	20.5	18.7	16.7	13.8	13.5		44
46	22.7	18.9	17.3	17.7	18.5	15.0	19.9	18.2	17.2	15.6	17.7	19.0	17.3	15.4	12.9	12.6		46
48	21.1	17.4	15.9	16.3	17.3	14.1	18.7	17.0	16.0	14.5	16.7	17.7	16.1	14.3	12.0	11.8		48
50	19.1	16.3	14.9	15.2	16.2	13.2	17.2	15.7	14.8	13.5	15.2	16.3	14.9	13.4	11.2	11.1		50
52	17.2	15.1	13.7	13.9	14.9	12.4	15.8	14.2	13.2	12.5	13.5	15.2	13.7	12.4	10.4	10.2		52
54	15.2	13.8	12.3	12.7	13.4	11.6	14.4	12.9	12.0	11.3	12.0	14.1	12.7	11.5	9.7	9.4		54
56	13.3	12.5	10.9	11.6	12.2	10.9	13.0	11.7	10.8	9.9	10.6	13.0	11.8	10.7	9.1	8.6		56
58	11.7	11.3	9.9	10.7	11.2	9.9	11.8	10.4	9.5	8.7	9.1	11.9	10.8	9.9	8.4	7.8		58
60		10.2	8.8	10.1	10.2	8.9	10.6	9.2	8.1	7.8	7.9	10.8	9.8	9.1	7.8	6.9		60
62		9.2	7.9	9.4	9.4	7.9	9.5	8.2	7.2	6.9	6.8	9.8	8.9	8.3	7.1	6.3		62
64			7.3	8.6	8.4	6.9	8.5	7.3	6.3	6.1	5.6	8.9	8.1	7.6	6.5	5.8		64
66					7.6	6.1		6.3	5.4	5.1	4.6	8.0	7.3	6.9	6.0	5.3		66
68					6.6	5.3			4.5	4.3	3.6	7.2	6.5	6.3	5.5	4.7		68
70						4.6						6.3	5.7	5.6	5.0	4.1		70
72													5.0	5.0	4.4			72
74																		74
76																		76
78																		78
80																		80

Load Chart - Telescopic Boom + Fixed Jib (TJ)

性能表 - 主臂 + 副臂

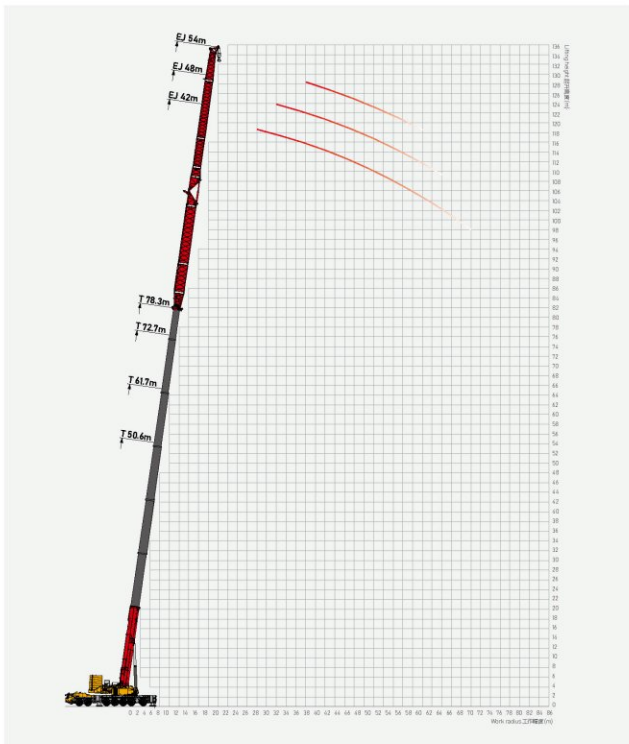


Unit: t

Reach (m)	30					36					42					Reach (m)
	61.7	67.2	72.7	78.3	83.8	61.7	67.2	72.7	78.3	83.8	61.7	67.2	72.7	78.3	83.8	
10																10
12																12
14																14
16																16
18	35.3															18
20	33.8	30.0				27.5					23.6					20
22	32.0	28.7	24.6	18.8		26.1	21.9				22.8	19.9				22
24	30.9	27.4	23.4	18.2	13.4	25.3	20.6	17.8	14.4		22.0	19.3	15.2			24
26	29.8	26.4	22.5	17.4	13.0	24.5	19.4	16.9	13.9	11.0	21.3	18.7	14.9	12.8		26
28	28.3	25.0	21.3	16.8	12.8	23.3	18.7	16.4	13.7	10.7	20.5	18.1	14.6	12.5	9.5	28
30	27.2	24.0	20.3	16.0	12.5	22.5	18.1	15.8	13.2	10.5	19.4	17.1	13.9	12.0	9.2	30
32	26.1	22.9	19.4	15.3	12.2	21.7	17.5	15.4	12.8	10.3	18.3	16.3	13.3	11.7	8.9	32
34	24.9	21.9	18.4	14.7	12.0	20.8	16.8	14.8	12.4	10.1	17.5	15.6	12.9	11.4	8.8	34
36	23.6	20.8	17.6	14.0	11.7	19.8	16.0	14.3	12.0	9.9	16.7	14.9	12.5	11.0	8.6	36
38	22.0	19.5	16.7	13.4	11.4	18.6	15.4	13.8	11.7	9.7	16.0	14.4	12.1	10.6	8.4	38
40	20.3	18.2	15.7	12.7	11.2	17.4	14.7	13.3	11.2	9.4	15.3	13.8	11.7	10.3	8.2	40
42	18.9	17.2	15.1	12.0	10.9	16.3	14.2	12.6	10.6	9.1	14.7	13.3	11.4	9.9	8.1	42
44	17.6	16.2	14.5	11.5	10.6	15.3	13.4	11.9	10.2	8.8	14.1	12.8	11.1	9.7	8.0	44
46	16.3	15.1	13.6	11.0	10.2	14.4	12.6	11.3	9.8	8.5	13.5	12.4	10.8	9.4	7.8	46
48	15.2	14.0	12.5	10.5	9.7	13.6	12.0	10.7	9.4	8.1	13.0	12.0	10.2	9.0	7.6	48
50	14.1	13.0	11.7	9.8	9.2	12.7	11.2	10.1	8.8	7.7	12.4	11.5	10.1	8.6	7.4	50
52	13.1	12.1	10.9	9.2	8.8	11.9	10.5	9.4	8.4	7.3	11.8	11.0	9.6	8.2	7.0	52
54	12.1	11.2	10.2	8.6	8.2	11.2	9.9	8.8	7.9	6.9	11.2	10.4	9.1	7.7	6.7	54
56	11.0	10.3	9.5	8.0	7.5	10.4	9.2	8.2	7.4	6.3	10.4	9.8	8.5	7.2	6.2	56
58	10.0	9.5	8.9	7.3	6.9	9.7	8.7	7.7	6.8	5.8	9.6	9.2	8.0	6.6	5.8	58
60	9.0	8.6	8.1	6.8	6.2	8.9	8.3	7.2	6.4	5.3	8.9	8.6	7.4	6.2	5.4	60
62	8.1	7.8	7.4	6.0	5.6	8.2	7.6	6.8	5.8	4.8	8.3	8.1	7.0	5.7	5.1	62
64	7.3	7.0	6.7	5.4	5.1	7.6	7.3	6.3	5.3	4.4	7.6	7.6	6.5	5.3	4.7	64
66	6.4	6.2	6.1	5.1	4.7	7.0	6.8	5.8	5.1	4.1	7.1	7.1	6.1	4.9	4.4	66
68	5.7	5.6	5.5	4.7		6.4	6.3	5.4	4.7		6.5	6.6	5.7	4.5		68
70	5.0	4.9	4.9	4.1		5.9	5.5	4.9	4.3		6.0	6.2	5.3			70
72	4.3	4.2				5.4	4.9				5.5	5.8				72
74		3.6					4.2									74
76																76
78																78
80																80

Operating Range - Telescopic Boom + Boom Extension + Fixed Jib (TEJ)

起升高度曲線 - 主臂延伸節 + 副臂



Load Chart - Telescopic Boom + Boom Extension + Fixed Jib (TEJ)

性能表 - 主臂延伸節 + 副臂

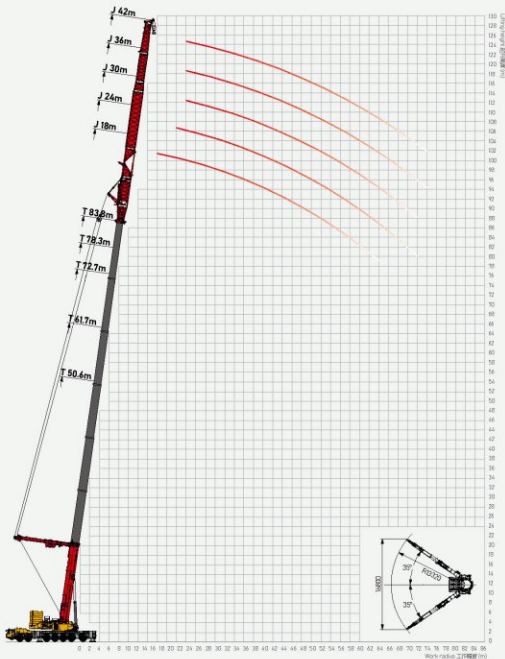


Unit: t

Reach (m)	42					48					54				Reach (m)
	61.7	67.2	72.7	78.3	83.8	61.7	67.2	72.7	78.3	83.8	61.7	67.2	72.7	78.3	
10															10
12															12
14															14
16															16
18															18
20	23.9														20
22	22.9	21.0													22
24	21.9	20.1	14.9			18.5									24
26	22.6	19.5	14.6	11.7		18.0	14.9	12.6			14.8				26
28	21.6	18.6	14.4	11.5	8.9	17.5	14.5	12.5			14.4				28
30	20.6	17.9	14.1	11.2	8.7	17.2	14.2	12.4	9.8		14.0	11.9			30
32	19.8	17.0	13.8	11.0	8.5	16.7	13.9	12.2	9.7	7.1	13.5	11.6	9.8		32
34	18.9	16.2	13.2	10.7	8.4	16.2	13.5	12.0	9.6	6.9	13.0	11.2	9.5		34
36	18.0	15.6	12.6	10.2	8.1	15.5	13.2	11.8	9.5	6.8	12.4	10.8	9.2	5.8	36
38	17.2	15.0	12.2	9.7	7.7	14.9	12.9	11.4	9.3	6.6	11.8	10.4	8.8	5.6	38
40	16.5	14.5	11.8	9.4	7.3	14.1	12.5	11.0	9.1	6.4	11.2	9.9	8.5	5.3	40
42	15.8	14.0	11.4	9.0	7.0	13.4	12.0	10.5	8.9	6.1	10.7	9.5	8.1	4.9	42
44	15.1	13.4	11.1	8.7	6.7	12.7	11.4	10.0	8.5	5.9	10.1	9.0	7.7	4.8	44
46	14.5	12.9	10.7	8.4	6.4	11.9	10.8	9.5	8.1	5.5	9.5	8.6	7.3	4.6	46
48	13.9	12.3	10.4	8.1	6.1	11.1	10.1	9.0	7.7	5.2	8.9	8.1	6.9	4.5	48
50	13.3	11.8	10.1	7.8	5.9	10.5	9.6	8.5	7.3	5.0	8.3	7.7	6.5	4.3	50
52	12.6	11.3	9.8	7.5	5.7	10.0	9.1	8.1	6.8	4.6	7.7	7.1	6.1	4.1	52
54	11.8	10.7	9.3	7.2	5.4	9.4	8.7	7.8	6.5	4.3	7.3	6.7	5.7	4.2	54
56	10.9	10.1	8.7	6.8	5.1	8.8	8.2	7.4	6.2	4.0	6.9	6.2	5.3	3.9	56
58	10.1	9.3	8.2	6.3	4.8	8.3	7.7	7.0	5.9		6.4	5.9	5.0	3.7	58
60	9.3	8.6	7.5	5.9	4.4	7.7	7.2	6.6	5.6		5.9	5.6	4.7	3.5	60
62	8.6	7.9	6.9	5.3	4.0	7.1	6.8	6.2	5.2		5.5	5.2	4.4		62
64	7.9	7.3	6.3	4.8	3.6	6.6	6.3	5.8	4.9		5.0	4.8	4.1		64
66	7.3	6.7	5.8	4.4	3.1	6.2	6.0	5.5			4.6	4.5	3.8		66
68	6.6	6.2	5.2	3.9		5.7	5.5	5.2			4.3	4.1	3.5		68
70	6.1	5.6	4.8	3.5		5.1	5.1				3.9	3.8			70
72	5.5	5.2	4.3			4.5					3.4	3.5			72
74		4.7	3.9			3.9									74
76															76
78															78
80															80

Operating Range - Telescopic Boom + Fixed Jib + Superlift Device (TSJ)

起升高度曲線 - 主臂 + 副臂 + 超起



Load Chart - Telescopic Boom + Fixed Jib + Superlift Device (TSJ)

性能表 - 主臂 + 副臂 + 超起



Unit: t

Reach (m)	18					24					30					Reach (m)	
	50.6	67.2	72.7	78.3	83.8	50.6	61.7	72.7	78.3	83.8	50.6	61.7	72.7	78.3	83.8		
10						90.5										10	
12						85.7						76.5				12	
14	91.4	85.7				81.8	85.5					72.1				14	
16	88.1	80.1	80.2			78.2	80.4					68.6	67.9			16	
18	82.1	74.6	74.0	70.8	70.0	74.6	75.6	68.8				65.1	62.6			18	
20	76.0	69.1	68.2	66.1	65.0	69.8	71.4	63.5				61.3	58.5	54.1		20	
22	70.7	64.3	63.4	61.5	60.8	65.0	66.5	58.6	55.6	52.8		57.7	54.5	49.7	48.5	22	
24	65.8	59.8	58.4	56.1	55.2	59.0	61.3	53.9	50.4	47.6		53.6	51.3	46.8	45.4	42.8	24
26	62.3	56.6	53.4	51.1	50.1	54.8	55.8	48.8	46.7	44.3		50.4	48.7	44.7	42.3	39.5	26
28	58.7	53.4	48.6	46.9	45.5	50.0	50.4	44.5	43.1	41.5		47.1	45.8	41.8	39.2	36.4	28
30	55.1	50.1	45.6	44.1	43.2	45.8	44.3	40.6	40.3	36.7		44.2	43.3	39.5	36.1	33.2	30
32	52.1	47.3	42.8	41.3	41.0	41.6	41.4	38.5	37.4	32.4		41.3	41.0	37.1	33.6	30.1	32
34	47.2	42.9	40.1	38.8	38.2	38.0	37.0	36.2	33.2	30.4		38.7	37.5	34.9	31.5	28.0	34
36	44.8	40.8	37.5	36.3	36.1	35.5	34.7	33.8	30.8	29.1		36.7	35.2	32.9	29.6	26.9	36
38	41.8	39.5	35.8	34.0	33.5	33.8	33.3	31.6	28.8	27.8		34.7	33.2	30.8	28.0	25.8	38
40	38.3	36.3	33.6	31.8	31.5	31.4	31.1	30.0	26.8	26.5		32.2	30.9	29.1	26.1	24.8	40
42	35.3	33.5	31.1	29.4	29.2	29.0	28.7	28.1	25.5	25.2		29.7	28.6	27.6	24.8	23.7	42
44	32.5	30.6	28.5	27.1	27.0	26.1	25.9	25.8	23.9	23.8		27.1	26.2	25.9	23.4	22.7	44
46	29.9	28.1	26.4	24.2	24.1	23.9	23.4	22.8	21.9	22.5		24.9	24.0	23.4	22.0	21.6	46
48	27.5	25.7	24.5	22.3	22.0	21.5	21.1	20.9	19.4	21.2		22.8	22.1	21.4	19.9	20.6	48
50	25.4	23.3	22.7	20.7	20.2	19.8	19.4	19.2	17.8	20.0		21.1	20.4	19.9	18.4	19.5	50
52	23.2	20.8	20.8	19.1	18.5	17.2	17.3	17.6	16.3	18.7		19.1	18.6	18.4	17.0	18.3	52
54	21.0	18.7	18.5	17.6	16.4	15.7	15.7	16.1	15.0	17.4		17.7	17.3	16.8	16.0	17.1	54
56	18.9	16.6	16.7	15.9	15.2	14.3	14.3	14.4	13.7	16.1		16.0	15.9	15.4	14.7	15.9	56
58	17.0	14.7	15.0	13.9	13.1	14.0	12.9	12.7	12.2	14.7		14.5	14.3	14.1	13.4	14.6	58
60	15.2	12.9	13.0	12.1	11.0		11.7	11.4	10.8	13.3		14.2	13.1	12.3	12.0	13.4	60
62	13.4	11.3	11.0	10.5	9.3		10.6	10.1	9.7	11.8		14.0	11.9	10.6	10.7	12.0	62
64	11.7	9.7	9.6	9.5	8.0		9.4	8.9	8.6	10.4			10.8	8.9	9.5	10.7	64
66			8.9	9.0	7.5		8.4	7.6	8.0	9.0			9.4	7.9	8.6	9.3	66
68							7.1	7.0		7.8			8.1	7.2	7.8	8.1	68
70										6.9			6.7	6.7	7.1	7.5	70
72										6.3			5.6			6.7	72
74																	74
76																	76
78																	78
80																	80

Load Chart - Telescopic Boom + Fixed Jib + Superlift Device (TSJ)

性能表 - 主臂 + 副臂 + 超起

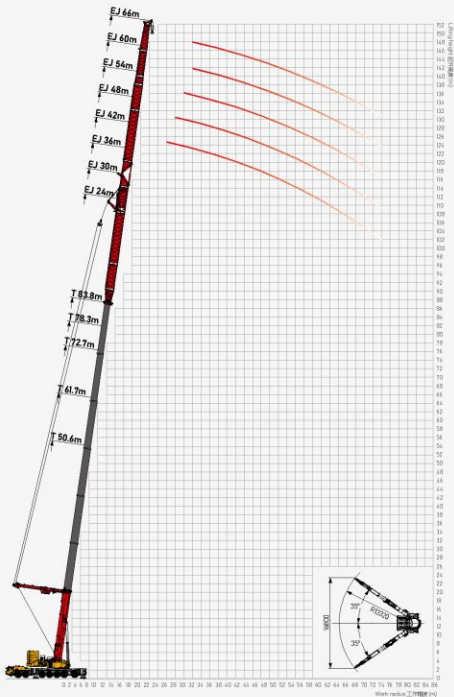


Unit: t

Reach (m)	36					42					Reach (m)
	50.6	61.7	72.7	78.3	83.8	50.6	61.7	72.7	78.3	83.8	
10											10
12	66.2										12
14	62.3					54.2					14
16	58.9	60.3				50.6	51.6				16
18	55.5	57.5				47.1	47.7				18
20	52.7	54.2	51.4			44.2	45.5	48.5			20
22	50.4	50.4	47.8	42.9		42.1	42.7	44.6	42.8		22
24	48.2	47.8	43.6	38.8	40.5	39.8	40.8	40.4	39.2		24
26	45.9	46.1	40.9	35.4	36.8	37.7	39.1	36.9	36.1	34.1	26
28	44.2	43.8	38.6	32.7	33.4	36.1	37.4	35.4	33.0	31.8	28
30	42.5	42.2	37.0	30.9	30.3	34.4	35.6	34.1	29.7	29.5	30
32	40.9	40.5	35.2	29.6	27.6	32.7	34.3	33.0	27.3	27.0	32
34	39.3	38.0	33.5	28.2	25.7	31.1	33.0	31.8	26.4	26.0	34
36	37.8	35.7	32.0	26.8	24.7	29.9	31.8	30.7	25.5	23.5	36
38	35.6	33.2	29.9	25.6	23.8	28.7	30.5	29.6	24.6	21.3	38
40	33.0	30.7	28.3	24.0	23.0	27.4	29.3	28.4	23.6	19.2	40
42	30.5	28.6	27.0	22.6	22.2	26.2	28.4	27.3	22.7	17.9	42
44	28.1	26.6	26.1	21.6	21.5	25.2	27.4	26.2	21.8	17.4	44
46	26.0	24.7	24.0	20.8	20.7	24.3	25.4	24.7	20.9	16.9	46
48	24.1	23.0	21.1	19.2	19.9	23.3	23.2	22.8	19.8	16.2	48
50	22.4	21.3	19.6	17.9	19.0	21.8	21.0	20.9	18.2	15.7	50
52	21.1	19.7	18.2	16.5	18.0	20.6	19.6	19.8	16.7	15.2	52
54	19.7	18.3	16.9	15.3	16.9	19.3	18.0	18.3	15.8	14.7	54
56	17.8	16.8	15.7	14.1	15.7	17.9	16.8	17.2	14.6	13.8	56
58	16.5	15.6	14.4	13.0	14.6	17.1	15.8	16.3	14.0	12.9	58
60	15.3	14.4	13.1	12.0	13.5	15.5	14.3	14.8	13.7	12.2	60
62	14.2	13.2	11.7	11.1	12.1	14.0	13.3	13.3	12.7	11.4	62
64	12.5	12.0	10.5	10.1	11.3	12.8	12.7	11.9	11.7	10.8	64
66	12.3	10.6	9.4	9.1	10.3	11.6	11.5	10.7	10.6	10.1	66
68		9.2	8.4	8.2	9.2	10.5	10.1	9.5	9.5	9.2	68
70		7.9	7.4	7.3	7.9	9.6	8.8	8.3	8.2	8.6	70
72		6.7	6.4	6.5	6.7	9.0	7.6	7.0	7.0	7.8	72
74		5.6			5.8		6.5	6.0	6.2	6.7	74
76					5.0		5.4			5.6	76
78											78
80											80

Operating Range - Telescopic Boom + Superlift Device + Boom Extension + Fixed Jib (TSEJ)

起升高度曲線 - 副臂前變幅 + 超起



Load Chart - Telescopic Boom + Superlift Device + Boom Extension + Fixed Jib (TSEJ)

性能表 - 副臂前變幅 + 超起



Unit: t

Reach (m)	42					48					54					Reach (m)	
	50.6	67.2	72.7	78.3	83.8	50.6	61.7	72.7	78.3	83.8	50.6	61.7	72.7	78.3	83.8		
10																	10
12																	12
14																	14
16	66.8	65.7				49.5											16
18	55.6	54.4	54.1			49.0	49.0					57.5					18
20	53.0	48.0	45.0			44.6	43.5					48.9					20
22	50.2	43.1	43.2	38.9		41.2	40.6	42.5				41.8	45.0				22
24	47.4	39.0	41.1	32.5	37.3	39.5	35.4	36.0	36.6			37.8	42.8	37.5			24
26	44.2	38.1	36.4	27.2	34.2	38.1	30.2	30.5	31.1	31.1		36.2	38.7	32.1	32.0		26
28	41.6	37.3	32.4	25.5	32.0	36.6	29.0	25.8	26.3	26.3	34.7	34.5	27.3	30.2	27.0		28
30	39.1	36.5	30.3	24.8	28.6	35.2	27.8	24.8	22.3	22.2	33.2	31.7	26.8	28.5	23.0		30
32	36.8	35.7	28.5	24.5	26.8	33.5	26.4	24.6	20.6	20.5	31.6	29.7	24.8	23.5	22.1		32
34	35.0	34.7	28.2	24.0	25.4	31.8	25.9	24.4	19.4	17.6	30.0	27.7	22.5	22.9	20.8		34
36	33.2	33.5	28.0	23.8	24.5	30.1	25.2	24.1	19.2	15.4	28.5	25.7	21.7	22.1	19.1		36
38	31.7	32.1	27.7	23.0	23.4	28.7	24.8	23.9	19.0	15.2	27.1	24.7	21.5	18.4	17.6		38
40	30.2	30.6	27.4	22.5	22.5	27.3	24.2	23.7	18.8	15.1	25.8	23.7	21.3	17.1	16.2		40
42	28.8	29.2	27.0	21.8	21.5	26.2	23.5	23.5	18.5	14.9	25.4	22.1	21.1	16.8	13.8		42
44	27.6	27.9	26.5	21.5	20.4	25.0	19.7	23.3	18.2	14.7	23.6	21.9	20.9	16.6	13.3		44
46	26.3	26.6	25.7	20.9	19.0	23.9	18.8	23.0	17.8	14.5	22.5	19.8	20.7	16.3	13.2		46
48	25.2	25.1	24.3	20.3	18.9	22.9	18.0	22.7	17.5	14.3	21.6	19.0	20.4	15.9	13.0		48
50	23.9	23.1	22.7	19.6	17.1	21.9	17.3	22.2	17.2	14.1	20.7	18.2	20.1	15.6	12.8		50
52	22.6	21.3	20.8	18.9	16.4	21.1	16.6	21.5	16.9	13.9	19.9	17.5	19.6	15.3	12.6		52
54	21.1	19.5	19.0	18.1	15.5	20.3	15.9	20.4	16.4	13.8	19.1	16.8	18.9	14.9	12.4		54
56	19.4	17.9	17.3	17.3	14.8	19.4	15.3	18.9	15.8	13.6	18.3	16.2	17.8	14.5	12.3		56
58	17.7	16.3	15.8	16.2	13.3	18.5	14.7	16.9	15.2	13.4	17.5	15.5	16.9	14.0	12.1		58
60	16.2	14.7	14.4	14.8	12.7	17.6	14.1	15.1	14.6	13.1	16.7	14.9	15.4	13.6	11.9		60
62	14.8	13.3	12.8	13.1	12.2	16.6	13.4	13.5	13.6	12.8	15.9	14.2	13.8	13.0	11.6		62
64	13.4	11.7	11.3	11.6	11.7	15.4	12.6	11.9	12.1	12.3	15.1	13.0	12.2	12.3	11.3		64
66	12.2	10.3	9.8	10.2	10.7	13.9	11.1	10.5	10.7	11.1	14.2	11.5	10.7	10.8	10.8		66
68	10.9	8.9	8.5	8.8	9.3	12.5	9.7	9.1	9.3	9.7	13.0	10.1	9.4	9.5	9.9		68
70	9.8	7.6	7.2	7.5	8.0	11.3	8.4	7.8	8.0	8.5	11.7	8.8	8.1	8.3	8.5		70
72	9.2	6.5	6.0	6.3	6.8	10.1	7.3	6.6	6.8	7.2	10.5	7.6	6.9	7.0	7.4		72
74	8.0	5.3		5.1	5.7	8.9	6.1	5.5	5.7	6.1	9.3	6.5	5.8	5.9	6.2		74
76					4.6	7.8	5.0	4.4	4.6	5.1	8.2	5.4	4.7	4.8	5.2		76
78					3.6				3.6	4.0	7.2	4.4	3.7	3.8	4.2		78
80																	80

Load Chart - Telescopic Boom + Superlift Device + Boom Extension + Fixed Jib (TSEJ)

性能表 - 副臂前變幅 + 超起

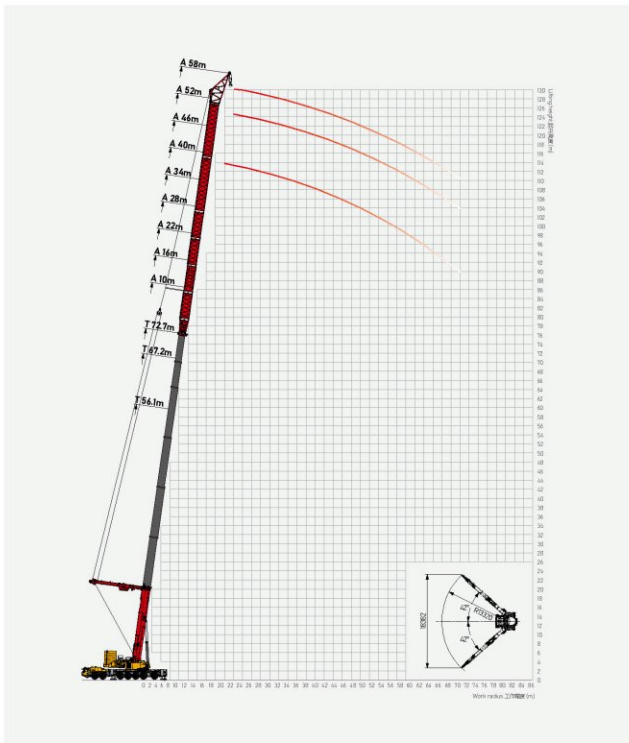


Unit: t

Reach (m)	60					66					Reach (m)
	50.6	61.7	72.7	78.3	83.8	50.6	61.7	72.7	78.3	83.8	
10											10
12											12
14											14
16											16
18	50.4					41.5					18
20	47.9					39.8					20
22	45.3	43.3				37.0	39.4				22
24	43.8	40.0				35.4	36.0				24
26	41.5	36.1	32.5			33.8	32.8	29.5			26
28	39.5	33.0	27.7	27.6		32.0	30.0	25.2	25.1		28
30	37.5	30.6	23.5	25.3	23.3	31.1	27.8	21.4	23.0	21.1	30
32	35.5	28.1	21.8	23.5	20.5	29.9	25.6	19.8	21.4	18.6	32
34	33.5	26.5	20.7	21.3	19.4	28.9	24.1	18.8	19.4	17.6	34
36	31.9	25.8	19.3	19.1	18.5	27.9	23.4	17.6	17.4	16.8	36
38	30.1	24.9	19.1	15.6	17.2	26.8	22.6	17.4	14.2	15.6	38
40	28.6	23.8	18.9	15.4	16.1	24.8	21.6	17.2	14.0	14.6	40
42	26.2	22.7	18.7	15.2	14.5	23.8	20.6	17.0	13.8	13.2	42
44	24.9	21.8	18.5	15.0	12.0	22.6	19.8	16.8	13.6	10.9	44
46	22.6	20.8	18.3	14.7	11.8	20.5	18.9	16.7	13.4	10.7	46
48	20.5	20.0	18.1	14.4	11.6	18.6	18.2	16.5	13.1	10.6	48
50	18.6	19.2	17.9	14.1	11.5	16.9	17.4	16.3	12.8	10.4	50
52	17.8	18.3	17.7	13.8	11.3	16.2	16.7	16.1	12.5	10.3	52
54	17.0	17.6	17.3	13.5	11.1	15.5	16.0	15.7	12.2	10.1	54
56	16.5	17.0	16.6	13.2	10.9	15.0	15.4	15.1	11.6	9.7	56
58	15.8	16.3	16.0	12.9	10.8	14.4	14.8	14.6	10.7	8.8	58
60	15.3	15.7	15.3	12.6	10.6	13.9	14.3	13.9	10.2	8.1	60
62	14.5	15.0	14.2	12.1	10.4	13.2	13.7	12.3	9.4	7.4	62
64	14.0	13.5	12.6	11.7	10.3	12.7	12.9	11.9	8.9	6.8	64
66	13.5	12.1	11.2	11.2	10.1	12.3	12.1	11.3	8.1	6.1	66
68	13.0	10.7	9.8	9.9	9.8	11.8	10.9	10.0	7.7	5.3	68
70	12.3	9.4	8.6	8.6	8.8	11.4	9.6	8.7	7.0	4.8	70
72	11.0	8.2	7.3	7.4	7.7	10.3	8.4	7.4	6.3	3.8	72
74	9.9	7.0	6.1	6.2	6.5	9.5	7.2	6.3	5.8	2.8	74
76	8.8	5.9	5.1	5.2	5.4	8.6	6.2	5.3	5.0	2.3	76
78	7.7	4.9	4.1	4.2	4.4	7.9	5.2	4.2	4.2	1.7	78
80											80

Operating Range - Telescopic Boom + Superlift Device + Wind Power Jib (TSA)

起升高度曲線 - 主臂 + 超起 + 風電副臂



Load Chart - Telescopic Boom + Superlift Device + Wind Power Jib (TSA)

性能表 - 主臂 + 超起 + 風電副臂

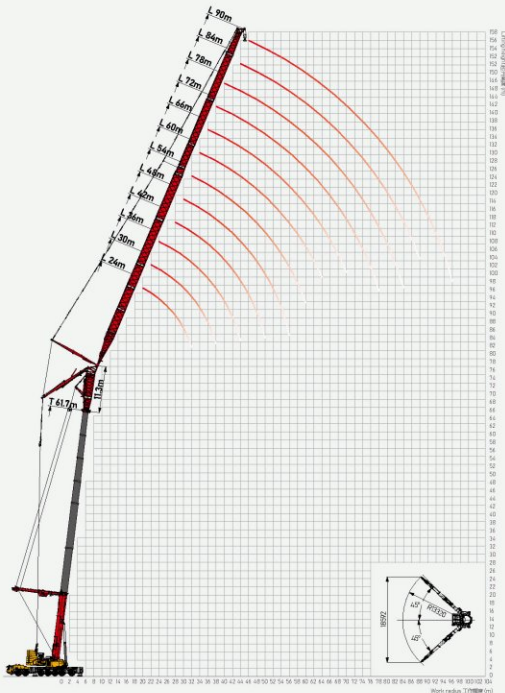


Unit: t

Unit: t	10	34	40	46	58	52	58	58	Unit: t
	91	61.7	61.7	61.7	56.1	67.2	67.2	72.7	
	191	95.7	101.7	107.7	114.1	99.2	125.2	139.7	
10.0									10.0
12.0									12.0
14.0									14.0
16.0	66.0	105.6	101.2						16.0
17.0	61.6	98.2	94.2	101.2					17.0
18.0	54.6	91.3	87.5	94.4	89.8				18.0
19.0	51.0	84.5	81.0	88.9	82.7	84.5			19.0
20.0	47.5	80.2	76.8	83.7	76.6	78.3	74.8		20.0
21.0	44.9	76.1	72.2	78.5	71.5	74.1	70.4	66.0	21.0
22.0	43.1	72.2	69.3	74.2	66.9	70.6	64.2	52.8	22.0
24.0	40.5	66.0	63.3	67.5	60.7	64.5	53.5	48.3	24.0
26.0	37.0	59.9	57.5	62.0	56.8	58.5	46.6	43.8	26.0
28.0	34.8	56.1	53.8	56.7	51.5	54.8	41.1	41.0	28.0
30.0	31.7	50.9	48.8	53.3	45.6	49.7	37.9	37.2	30.0
32.0	28.2	45.1	43.2	48.6	42.6	44.0	35.2	32.9	32.0
34.0	26.4	42.1	40.3	43.2	39.3	41.1	32.4	30.8	34.0
36.0	24.5	38.9	37.2	40.5	34.6	38.0	28.3	28.4	36.0
38.0	21.6	34.1	32.7	37.2	31.0	33.4	25.2	25.0	38.0
40.0	19.4	30.6	29.3	33.1	27.8	29.9	21.8	22.4	40.0
42.0	17.4	27.5	26.3	29.7	25.1	26.8	19.4	20.1	42.0
44.0	16.1	24.8	23.8	26.8	22.9	24.2	17.4	18.1	44.0
45.0	14.1	22.6	21.6	24.7	20.2	22.1	15.6	16.5	45.0
48.0	12.7	19.9	19.0	21.6	18.1	19.4	14.2	14.5	48.0
50.0	11.4	18.0	17.2	19.4	16.7	17.5	12.3	13.1	50.0
52.0	10.6	16.5	15.8	17.5	14.9	16.1	11.0	12.1	52.0
54.0	9.4	14.7	14.1	16.2	12.8	14.3	10.1	10.7	54.0
56.0	8.1	12.6	12.1	14.4	11.1	12.3	8.9	9.2	56.0
58.0	7.0	11.0	10.5	12.4	9.9	10.7	7.5	8.0	58.0
60.0	6.3	9.9	9.4	10.8	8.2	9.6	6.4	7.2	60.0
62.0	5.2	8.1	7.7	9.7	6.6	7.9	5.6	5.9	62.0
64.0	4.2	6.6	6.2	7.9	5.0	6.4	4.5	4.8	64.0
66.0	2.9	4.5	4.3	6.5	3.8	4.4	3.5	3.3	66.0
68.0	2.1	3.3	3.2	4.5	2.6	3.2	2.1	2.4	68.0
70.0		1.9	1.6	3.3					70.0
72.0									72.0
74.0									74.0

Operating Range - Telescopic Boom + Luffing Jib + Superlift Device (TSL)

起升高度曲線 - 主臂 + 變幅副臂 + 超起



Load Chart - Telescopic Boom + Luffing Jib + Superlift Device (TSL)

性能表 - 主臂 + 變幅副臂 + 超起



Unit: t

Unit	33.9+11.3										Unit		
	24.0	30.0	36.0	42.0	48.0	54.0	60.0	66.0	72.0	78.0		84.0	90.0
13.0													13.0
14.0													14.0
16.0	122.8												16.0
18.0	113.7	104.6											18.0
20.0	104.7	101.9	92.9										20.0
22.0	96.3	96.3	89.7	66.8									22.0
24.0	89.2	89.1	86.8	84.5	60.6								24.0
26.0	82.9	82.9	82.2	62.6	60.1	52.4							26.0
28.0	77.4	77.5	76.5	60.8	59.0	51.5	44.9	37.0					28.0
30.0		72.7	70.1	59.0	58.0	50.6	44.4	36.7	28.8				30.0
32.0		67.3	66.8	56.5	57.0	49.9	43.7	36.5	28.8	25.8			32.0
34.0		62.6	62.2	53.2	56.1	49.1	43.0	36.0	28.8	25.8	21.0		34.0
36.0			58.1	51.8	54.9	48.6	42.4	35.4	28.8	25.8	21.0	16.5	36.0
38.0			54.5	50.1	53.2	48.0	41.8	34.8	28.8	25.8	20.9	16.3	38.0
40.0			51.2	48.0	50.7	47.2	41.3	34.3	28.5	25.7	20.8	16.1	40.0
42.0				46.1	47.8	46.0	40.9	33.8	28.2	25.4	20.7	15.9	42.0
44.0				44.3	45.0	44.1	40.7	33.2	27.8	25.1	20.5	15.7	44.0
46.0				42.6	41.4	42.5	40.5	32.6	27.3	24.7	20.3	15.5	46.0
48.0					38.3	40.2	39.8	32.0	26.9	24.5	20.1	15.3	48.0
50.0						35.3	38.0	37.9	31.5	26.4	24.1	19.7	50.0
52.0					32.9	36.0	36.0	31.0	26.0	23.8	19.4	14.9	52.0
54.0						34.1	34.4	30.4	25.6	23.5	19.1	14.7	54.0
56.0						32.2	32.8	29.8	25.1	23.2	18.7	14.5	56.0
58.0						29.9	31.2	29.2	24.7	23.0	18.3	14.2	58.0
60.0							29.7	28.6	24.4	22.6	18.0	14.0	60.0
62.0							28.5	27.2	24.0	22.4	17.7	13.8	62.0
64.0							27.3	25.9	23.7	22.2	17.4	13.5	64.0
66.0								24.5	23.4	22.1	17.0	13.3	66.0
68.0									23.0	23.2	21.9	16.7	68.0
70.0										22.7	21.8	16.4	70.0
72.0										21.6	21.6	16.1	72.0
74.0										20.6	21.1	15.8	74.0
76.0									19.7	20.1	15.6	12.5	76.0
78.0										19.3	15.3	12.3	78.0
80.0										18.0	15.0	12.1	80.0
82.0										17.0	14.7	11.9	82.0
84.0											14.4	11.7	84.0
86.0											14.2	11.5	86.0
88.0											13.9	11.3	88.0
90.0												11.1	90.0
92.0												10.7	92.0
94.0													94.0
96.0													96.0
98.0													98.0
100.0													100.0
102.0													102.0
104.0													104.0
106.0													106.0
108.0													108.0
110.0													110.0

Load Chart - Telescopic Boom + Luffing Jib + Superlift Device (TSL)

性能表 - 主臂 + 變幅副臂 + 超起



Unit: t

Unit	39.5+11.3											Unit							
	24.0	30.0	36.0	42.0	48.0	54.0	60.0	66.0	72.0	78.0	84.0		90.0						
13.0													13.0						
14.0													14.0						
16.0	120.0												16.0						
18.0	111.1	102.1											18.0						
20.0	103.7	99.4	90.7										20.0						
22.0	95.5	95.3	88.5	88.5									22.0						
24.0	88.3	88.3	86.6	86.4	59.7								24.0						
26.0	82.2	82.1	81.4	84.2	59.2	51.1							26.0						
28.0	76.7	76.7	76.1	82.1	58.1	50.1	44.6	36.0					28.0						
30.0		71.8	71.2	80.0	57.1	49.3	43.8	35.7	28.6				30.0						
32.0		66.5	66.0	57.4	56.2	48.6	42.8	35.5	28.6	25.0			32.0						
34.0		61.9	61.4	53.8	55.3	47.8	41.9	35.0	28.6	25.0	20.4		34.0						
36.0			57.4	52.1	54.1	47.3	41.1	34.4	28.6	25.0	20.3	15.7	36.0						
38.0			53.8	50.1	52.4	46.8	40.3	33.8	28.6	25.0	20.2	15.5	38.0						
40.0			50.6	48.2	50.1	46.0	39.6	33.3	28.3	24.8	20.2	15.3	40.0						
42.0				46.5	47.3	44.8	38.9	32.9	28.0	24.6	20.2	15.1	42.0						
44.0				44.8	44.7	42.9	38.5	32.3	27.6	24.3	20.0	14.9	44.0						
46.0				42.7	42.3	41.5	38.1	31.7	27.1	23.9	19.8	14.7	46.0						
48.0					40.1	39.1	37.7	31.1	26.7	23.7	19.6	14.6	48.0						
50.0					38.0	36.9	36.1	30.5	26.3	23.3	19.2	14.4	50.0						
52.0					36.0	34.9	34.5	30.1	25.8	23.0	18.9	14.2	52.0						
54.0						33.1	33.1	29.5	25.4	22.7	18.6	14.0	54.0						
56.0						31.2	31.8	28.9	25.0	22.4	18.3	13.8	56.0						
58.0						29.0	30.5	28.3	24.5	22.2	17.9	13.5	58.0						
60.0							29.4	27.7	24.2	21.9	17.6	13.3	60.0						
62.0							28.4	26.7	23.9	21.7	17.3	13.1	62.0						
64.0								27.1	25.7	23.6	21.5	17.0	12.9	64.0					
66.0									24.6	23.2	21.4	16.7	12.7	66.0					
68.0										23.3	21.1	16.4	12.5	68.0					
70.0											22.5	21.0	16.1	12.3	70.0				
72.0												21.5	20.8	15.7	12.2	72.0			
74.0													20.5	20.3	15.4	12.0	74.0		
76.0														19.6	19.4	15.2	11.9	76.0	
78.0															18.6	19.0	11.7	78.0	
80.0																17.6	14.7	11.5	80.0
82.0																16.9	14.4	11.4	82.0
84.0																	14.1	11.2	84.0
86.0																	13.9	11.1	86.0
88.0																	13.6	10.9	88.0
90.0																		10.7	90.0
92.0																		10.5	92.0
94.0																		10.2	94.0
96.0																			96.0
98.0																			98.0
100.0																			100.0
102.0																			102.0
104.0																			104.0
106.0																			106.0
108.0																			108.0
110.0																			110.0

Load Chart - Telescopic Boom + Luffing Jib + Superlift Device (TSL)

性能表 - 主臂 + 變幅副臂 + 超起



Unit: t

45°	45°+11.3										45°		
	24.0	30.0	36.0	42.0	48.0	54.0	60.0	66.0	72.0	78.0		84.0	90.0
13.0													13.0
14.0													14.0
16.0													16.0
18.0	111.6												18.0
20.0	103.0	94.4											20.0
22.0	94.7	91.9	84.6										22.0
24.0	87.7	87.6	82.8	69.9									24.0
26.0	81.5	81.4	79.6	67.1	57.1								26.0
28.0	76.2	76.1	74.3	64.6	56.1	50.0							28.0
30.0	70.8	71.1	69.4	62.1	55.1	49.6	43.5	35.1					30.0
32.0		65.8	65.3	59.0	54.3	48.8	42.5	34.8	27.6				32.0
34.0		61.3	60.7	55.0	53.4	48.4	41.7	34.6	27.6	23.9			34.0
36.0		57.2	56.8	52.5	52.3	48.1	40.9	34.2	27.6	23.8	19.8		36.0
38.0			53.2	49.8	50.7	47.6	40.2	33.6	27.6	23.8	19.7	15.2	38.0
40.0			50.0	47.5	49.3	46.8	39.5	33.0	27.6	23.7	19.7	15.0	40.0
42.0				45.2	46.7	45.6	39.0	32.5	27.4	23.5	19.6	14.8	42.0
44.0				43.1	44.2	43.7	38.6	32.1	27.0	23.2	19.5	14.6	44.0
46.0				41.2	41.9	41.4	38.3	31.5	26.6	22.8	19.3	14.2	46.0
48.0				39.4	39.7	39.3	37.9	30.9	26.2	22.6	19.1	14.0	48.0
50.0					37.7	37.4	36.4	30.4	25.8	22.2	18.7	13.8	50.0
52.0					36.0	35.4	35.0	29.8	25.4	21.9	18.4	13.6	52.0
54.0					34.3	33.2	33.5	29.3	24.9	21.6	18.1	13.4	54.0
56.0						31.2	31.9	28.8	24.5	21.3	17.9	13.2	56.0
58.0						29.4	30.4	28.2	24.1	21.1	17.5	12.9	58.0
60.0						27.3	28.8	27.6	23.7	20.8	17.2	12.8	60.0
62.0							27.3	26.7	23.4	20.6	16.9	12.6	62.0
64.0							26.0	25.8	23.0	20.4	16.6	12.4	64.0
66.0							24.5	24.8	22.7	20.3	16.3	12.2	66.0
68.0								23.9	22.4	20.1	16.0	12.0	68.0
70.0								22.7	22.2	20.0	15.7	11.8	70.0
72.0									21.7	19.8	15.3	11.7	72.0
74.0									20.8	19.3	15.0	11.6	74.0
76.0									19.8	18.7	14.8	11.5	76.0
78.0										18.1	14.6	11.3	78.0
80.0										17.6	14.4	11.1	80.0
82.0										17.0	14.1	11.0	82.0
84.0											13.8	10.6	84.0
86.0											13.6	10.4	86.0
88.0											13.3	10.3	88.0
90.0											13.0	10.2	90.0
92.0												10.1	92.0
94.0												9.9	94.0
96.0													96.0
98.0													98.0
100.0													100.0
102.0													102.0
104.0													104.0
106.0													106.0
108.0													108.0
110.0													110.0

Load Chart - Telescopic Boom + Luffing Jib + Superlift Device (TSL)

性能表 - 主臂 + 變幅副臂 + 超起



Unit: t

Reach (m)	50.6+11.3											Reach (m)									
	24.0	30.0	36.0	42.0	48.0	54.0	60.0	66.0	72.0	78.0	84.0		90.0								
13.0													13.0								
14.0													14.0								
16.0													16.0								
18.0	104.2												18.0								
20.0	96.9	90.7											20.0								
22.0	92.5	88.3	79.5										22.0								
24.0	86.8	84.8	77.7	68.2									24.0								
26.0	80.2	80.0	74.8	66.2	55.2								26.0								
28.0	75.5	74.2	69.7	64.4	54.2	49.5							28.0								
30.0	70.2	67.9	65.1	62.6	53.3	49.1	41.3	34.2					30.0								
32.0		64.0	62.5	60.1	52.5	48.4	40.6	33.9	26.6				32.0								
34.0		59.1	58.7	57.2	51.7	47.9	40.0	33.7	26.6	23.0			34.0								
36.0		55.1	54.9	54.1	50.6	47.6	39.5	33.2	26.6	22.9	17.5		36.0								
38.0			52.0	51.0	49.0	47.1	39.0	32.7	26.6	22.9	17.5	14.9	38.0								
40.0			49.5	48.3	47.7	46.3	38.5	32.1	26.6	22.8	17.5	14.7	40.0								
42.0				45.7	46.1	45.2	38.1	31.6	26.3	22.6	17.5	14.4	42.0								
44.0				43.2	43.4	43.3	37.9	31.2	26.0	22.3	17.4	14.2	44.0								
46.0				40.7	40.8	41.1	37.8	30.6	25.6	21.9	17.3	13.8	46.0								
48.0				38.6	38.7	38.9	37.6	30.1	25.2	21.7	17.2	13.5	48.0								
50.0					36.4	37.0	36.3	29.5	24.8	21.4	16.9	13.3	50.0								
52.0					34.2	35.2	34.7	29.0	24.4	21.1	16.7	13.1	52.0								
54.0					32.2	33.1	33.1	28.5	24.0	20.8	16.4	12.8	54.0								
56.0						31.1	31.6	28.0	23.5	20.5	16.2	12.6	56.0								
58.0						29.3	30.0	27.4	23.1	20.3	15.9	12.3	58.0								
60.0						27.2	28.4	26.8	22.7	20.0	15.7	12.1	60.0								
62.0							26.8	26.3	22.4	19.8	15.4	11.9	62.0								
64.0								25.5	22.1	19.6	15.2	11.7	64.0								
66.0								24.2	21.1	19.5	15.0	11.5	66.0								
68.0									24.3	21.5	19.3	14.7	11.3	68.0							
70.0									23.4	21.3	19.2	14.5	11.1	70.0							
72.0										20.8	19.0	14.2	11.0	72.0							
74.0										19.9	18.5	13.9	10.8	74.0							
76.0										19.0	17.6	13.8	10.6	76.0							
78.0											17.0	13.6	10.4	78.0							
80.0												16.2	13.4	10.2	80.0						
82.0													15.4	13.1	10.1	82.0					
84.0														14.2	12.9	9.7	84.0				
86.0															12.7	9.5	86.0				
88.0																12.5	9.4	88.0			
90.0																	12.2	9.3	90.0		
92.0																		9.2	9.2	92.0	
94.0																			8.8	94.0	
96.0																				8.4	96.0
98.0																					98.0
100.0																					100.0
102.0																					102.0
104.0																					104.0
106.0																					106.0
108.0																					108.0
110.0																					110.0

Load Chart - Telescopic Boom + Luffing Jib + Superlift Device (TSL)

性能表 - 主臂 + 變幅副臂 + 超起



Unit: t

Reach (m)	56.1+11.3											Reach (m)			
	24.0	30.0	36.0	42.0	48.0	54.0	60.0	66.0	72.0	78.0	84.0		90.0		
13.0													13.0		
14.0													14.0		
16.0													16.0		
18.0													18.0		
20.0	95.3												20.0		
22.0	88.6	81.4											22.0		
24.0	84.5	79.1	74.2										24.0		
26.0	79.3	75.8	72.5	63.7									26.0		
28.0	72.9	71.3	69.7	62.5	52.6								28.0		
30.0	67.0	65.6	64.8	61.4	51.7	46.1							30.0		
32.0		60.5	60.4	59.6	50.9	45.4	38.8	32.0					32.0		
34.0		55.8	56.3	56.8	50.1	44.7	38.2	31.8	25.1				34.0		
36.0		51.7	52.6	53.7	49.0	44.2	37.6	31.6	25.1	20.8			36.0		
38.0			48.4	50.6	47.5	43.7	37.0	31.1	25.1	20.8	15.6		38.0		
40.0			46.1	47.2	46.2	43.0	36.6	30.6	25.1	20.7	15.6	13.2	40.0		
42.0			43.2	44.1	44.8	41.9	36.1	30.1	25.1	20.5	15.5	12.9	42.0		
44.0				41.9	42.1	40.2	35.8	29.6	24.9	20.3	15.4	12.7	44.0		
46.0				39.0	39.2	37.7	35.6	29.2	24.5	19.9	15.2	12.5	46.0		
48.0				36.2	36.6	35.5	35.4	28.8	24.2	19.7	15.1	12.1	48.0		
50.0					34.5	33.6	35.3	28.4	23.8	19.4	14.8	11.8	50.0		
52.0					32.7	32.0	33.8	27.8	23.4	19.1	14.5	11.6	52.0		
54.0					30.8	30.2	32.1	27.1	23.0	18.9	14.3	11.4	54.0		
56.0						28.6	30.2	26.7	22.6	18.6	14.0	11.2	56.0		
58.0						27.0	28.3	26.1	22.2	18.4	13.9	11.0	58.0		
60.0						25.3	26.6	25.6	21.8	18.2	13.5	10.6	60.0		
62.0							25.0	24.7	21.4	18.0	13.2	10.4	62.0		
64.0								23.5	23.8	21.1	17.8	13.0	10.2	64.0	
66.0								22.0	22.9	20.8	17.7	12.8	10.0	66.0	
68.0									22.0	20.5	17.5	12.5	9.8	68.0	
70.0									21.1	20.2	17.4	12.3	9.6	70.0	
72.0										20.3	20.0	17.3	12.0	9.4	72.0
74.0											19.6	16.8	11.7	9.3	74.0
76.0											19.0	16.0	11.5	9.1	76.0
78.0												15.3	11.4	9.0	78.0
80.0												14.1	11.1	8.8	80.0
82.0												13.3	10.9	8.6	82.0
84.0												12.3	10.7	8.5	84.0
86.0													10.5	8.1	86.0
88.0													10.3	8.0	88.0
90.0													10.0	7.8	90.0
92.0														7.8	92.0
94.0														7.6	94.0
96.0														7.5	96.0
98.0															98.0
100.0															100.0
102.0															102.0
104.0															104.0
106.0															106.0
108.0															108.0
110.0															110.0

Load Chart - Telescopic Boom + Luffing Jib + Superlift Device (TSL)

性能表 - 主臂 + 變幅副臂 + 超起



Unit: t

Reach (m)	61.7+11.3											Reach (m)		
	24.0	30.0	36.0	42.0	48.0	54.0	60.0	66.0	72.0	78.0	84.0		90.0	
13.0													13.0	
14.0													14.0	
16.0													16.0	
18.0													18.0	
20.0	91.4												20.0	
22.0	85.0	76.0											22.0	
24.0	81.0	73.9	69.5										24.0	
26.0	76.0	70.7	67.9	60.4									26.0	
28.0	68.9	66.4	65.3	59.4	49.5								28.0	
30.0	62.5	61.0	60.7	58.3	48.6	44.6							30.0	
32.0	57.2	56.1	56.5	56.6	47.8	43.8	36.3	28.3					32.0	
34.0		51.6	52.7	54.0	47.0	43.0	35.7	28.0	23.0				34.0	
36.0		47.7	49.2	50.4	46.0	42.0	35.2	27.8	23.0	18.9			36.0	
38.0		44.1	45.2	47.7	44.5	41.5	34.7	27.3	23.0	18.7	13.8		38.0	
40.0			41.8	45.2	43.3	40.8	34.2	26.8	23.0	18.4	13.8		40.0	
42.0			38.9	41.3	42.0	39.8	33.8	26.2	23.0	18.1	13.7	11.3	42.0	
44.0				38.6	39.3	38.2	33.5	25.8	22.8	17.6	13.6	11.1	44.0	
46.0				35.9	36.6	35.9	33.4	25.4	22.4	17.2	13.5	10.9	46.0	
48.0				33.2	34.1	33.8	33.2	25.3	22.1	16.8	13.3	10.7	48.0	
50.0				30.3	32.1	32.0	33.1	24.9	21.7	16.4	13.1	10.3	50.0	
52.0					30.3	30.3	31.9	24.3	21.3	16.1	12.8	10.1	52.0	
54.0					28.5	29.0	30.2	23.7	20.7	15.9	12.6	9.9	54.0	
56.0						28.1	28.4	23.2	20.3	15.7	12.4	9.7	56.0	
58.0						26.5	26.7	22.7	19.9	15.5	12.1	9.5	58.0	
60.0							25.0	22.2	19.6	15.3	11.9	9.4	60.0	
62.0								23.7	21.6	15.2	11.7	9.0	62.0	
64.0								22.3	21.0	18.9	15.0	11.5	8.8	64.0
66.0								21.0	20.4	18.6	14.9	11.2	8.6	66.0
68.0									19.9	18.3	14.8	11.0	8.5	68.0
70.0									19.2	18.1	14.7	10.8	8.3	70.0
72.0									18.7	17.9	14.5	10.5	8.1	72.0
74.0										17.4	14.2	10.3	7.9	74.0
76.0										17.0	13.5	10.2	7.8	76.0
78.0										16.5	12.9	10.0	7.7	78.0
80.0											11.7	9.8	7.6	80.0
82.0											11.0	9.6	7.4	82.0
84.0											10.2	9.4	7.2	84.0
86.0												9.2	7.1	86.0
88.0												9.0	6.8	88.0
90.0												8.8	6.6	90.0
92.0												8.5	6.5	92.0
94.0													6.5	94.0
96.0													6.4	96.0
98.0														98.0
100.0														100.0
102.0														102.0
104.0														104.0
106.0														106.0
108.0														108.0
110.0														110.0

Load Chart - Telescopic Boom + Luffing Jib + Superlift Device (TSL)

性能表 - 主臂 + 變幅副臂 + 超起

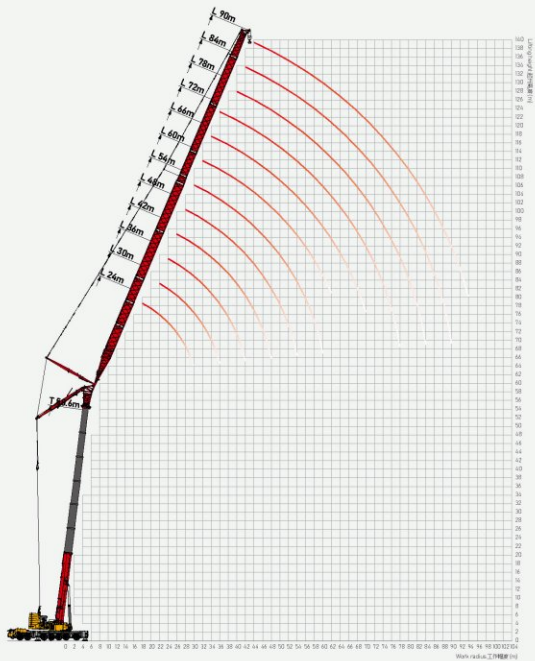


Unit:

Unit	67.2±11.3								72.7±11.3								78.3±11.3						Unit
	24.0	30.0	36.0	42.0	48.0	54.0	60.0	66.0	24.0	30.0	36.0	42.0	48.0	54.0	60.0	24.0	30.0	36.0	42.0	48.0	54.0		
13.0																							13.0
14.0																							14.0
16.0																							16.0
18.0																							18.0
20.0																							20.0
22.0	82.7								74.6														22.0
24.0	76.8	67.2							69.3	59.2						65.2							24.0
26.0	73.2	65.2	61.9						66.0	57.3	54.5					60.6	51.2						26.0
28.0	68.7	62.2	60.4	54.1					61.9	54.6	53.2				47.6			57.7	49.5	46.7			28.0
30.0	63.0	58.2	57.9	53.1	45.6				56.7	50.9	50.9	46.7	40.1			54.1	47.0	44.7	39.0			30.0	
32.0	57.9	53.1	53.7	51.5	44.9	42.0			52.1	46.2	47.2	45.3	39.5	35.5		49.5	43.5	41.2	37.8	33.8		32.0	
34.0		48.5	49.9	49.0	44.1	41.2	32.7	24.1		42.0	43.7	43.1	38.8	35.0	27.7	45.4	39.1	38.1	35.9	33.2	29.0	34.0	
36.0		44.4	46.4	45.9	43.1	40.2	32.1	23.8		38.2	40.6	40.4	37.9	34.6	27.2		35.2	35.3	33.6	32.5	28.7	36.0	
38.0		40.7	43.1	42.9	41.7	39.4	31.7	23.6		34.8	37.6	37.7	36.7	34.2	26.8		31.6	32.7	31.3	31.5	28.3	38.0	
40.0			39.5	40.1	40.5	38.7	31.2	23.1			34.4	35.2	35.6	33.6	26.4		28.5	29.7	29.2	30.3	27.8	40.0	
42.0			36.4	37.5	39.2	37.7	30.8	22.6			31.5	32.9	34.5	32.8	26.0			27.2	27.3	28.9	27.1	42.0	
44.0			33.6	35.2	36.7	36.2	30.4	22.0			29.1	30.8	32.6	31.4	25.7			25.0	25.5	27.2	25.9	44.0	
46.0				33.0	34.0	34.4	30.1	21.6				29.0	30.6	29.4	25.4				23.0	23.9	25.5	24.2	46.0
48.0				31.0	31.6	32.5	30.0	21.2				27.1	28.8	27.7	25.3					22.3	24.1	22.7	48.0
50.0				27.7	29.6	30.7	29.8	20.7				24.2	26.8	26.2	25.2					20.7	22.6	21.3	50.0
52.0					27.9	28.9	29.7	20.4					25.0	24.5	25.0					19.0	20.2	19.9	52.0
54.0					26.2	27.1	28.6	19.9					23.4	23.0	24.1						18.0	18.6	54.0
56.0						25.5	27.0	19.4					22.0	20.6	22.6						16.1	17.3	56.0
58.0						24.0	25.4	19.0						18.8	21.2							16.0	58.0
60.0						22.5	23.9	18.5						17.2	19.8							14.8	60.0
62.0							22.4	17.9															62.0
64.0								21.1	17.5														64.0
66.0								19.9	16.9														66.0
68.0								18.7	16.4														68.0
70.0									16.0														70.0
72.0									15.3														72.0
74.0									14.8														74.0
76.0																							76.0
78.0																							78.0
80.0																							80.0
82.0																							82.0
84.0																							84.0
86.0																							86.0
88.0																							88.0
90.0																							90.0
92.0																							92.0
94.0																							94.0
96.0																							96.0
98.0																							98.0
100.0																							100.0
102.0																							102.0
104.0																							104.0
106.0																							106.0
108.0																							108.0
110.0																							110.0

Operating Range - Telescopic Boom + Luffing Jib (TL)

起升高度曲線 - 主臂 + 變幅副臂



Load Chart - Telescopic Boom + Luffing Jib (TL)

性能表 - 主臂 + 變幅副臂



Unit: t

22.8+5.3	22.8+5.3										22.8+5.3		
	24.0	30.0	36.0	42.0	48.0	54.0	60.0	66.0	72.0	78.0		84.0	90.0
13.0													13.0
14.0	104.2												14.0
16.0	98.9	95.6											16.0
18.0	93.6	91.4	79.7										18.0
20.0	88.1	87.5	76.6	65.9									20.0
22.0	82.2	83.6	73.5	64.4	55.2								22.0
24.0	80.1	79.9	70.6	62.7	54.0	47.3							24.0
26.0	78.1	76.4	68.1	61.0	52.5	46.4	42.0						26.0
28.0		72.3	65.7	59.5	50.7	45.3	41.5	34.0					28.0
30.0		69.1	63.1	57.7	49.2	43.2	41.0	33.5	27.8				30.0
32.0		65.7	59.9	55.9	47.7	42.5	40.5	33.1	27.4	25.5			32.0
34.0			56.5	54.1	46.3	41.7	40.2	32.7	27.0	25.3	21.2		34.0
36.0			53.0	51.9	45.1	41.1	39.6	32.5	26.6	25.2	21.2	17.0	36.0
38.0			49.4	49.2	44.1	40.1	39.1	32.3	26.3	25.1	21.0	16.8	38.0
40.0				47.2	43.2	39.3	38.4	32.0	26.0	24.9	21.0	16.5	40.0
42.0				46.6	42.6	38.5	37.7	31.5	25.5	24.8	20.9	16.3	42.0
44.0				41.9	41.7	37.5	36.9	31.0	25.1	24.6	20.8	16.0	44.0
46.0					39.3	36.3	36.1	30.7	24.6	24.5	20.7	15.8	46.0
48.0					36.9	35.5	35.5	30.2	24.3	24.4	20.5	15.5	48.0
50.0						34.3	34.3	29.7	23.9	24.2	20.1	15.2	50.0
52.0							33.1	33.7	29.2	23.5	23.9	19.9	52.0
54.0							31.9	33.0	28.7	23.2	23.8	19.6	54.0
56.0							28.9	31.6	28.3	22.8	23.5	19.3	56.0
58.0								30.4	27.8	22.4	23.2	19.0	58.0
60.0									27.5	22.0	23.0	18.7	60.0
62.0									27.0	21.6	22.7	18.4	62.0
64.0									26.6	21.2	22.4	18.2	64.0
66.0									25.8	20.8	22.1	17.9	66.0
68.0										20.4	21.8	17.2	68.0
70.0										19.8	21.3	16.3	70.0
72.0										19.2	20.3	15.6	72.0
74.0										18.7	19.4	15.3	74.0
76.0											18.2	15.1	76.0
78.0											17.0	14.8	78.0
80.0											16.0	14.5	80.0
82.0												14.2	82.0
84.0												14.0	84.0
86.0												13.7	86.0
88.0													88.0
90.0													90.0
92.0													92.0
94.0													94.0

Load Chart - Telescopic Boom + Luffing Jib (TL)

性能表 - 主臂 + 變幅副臂



Unit: t

Reach (m)	28.4+5.3										Reach (m)				
	24.0	30.0	36.0	42.0	48.0	54.0	60.0	66.0	72.0	78.0		84.0	90.0		
13.0													13.0		
14.0	101.2												14.0		
16.0	96.1												16.0		
18.0	90.2	86.5	79.0										18.0		
20.0	86.8	83.0	76.7	61.8									20.0		
22.0	80.2	79.8	73.8	61.0									22.0		
24.0	77.8	76.5	70.9	59.9	54.0								24.0		
26.0	75.9	73.5	69.0	58.9	53.2	45.1	39.5						26.0		
28.0		70.5	66.7	58.1	52.1	44.2	39.1	31.4					28.0		
30.0			67.2	64.5	56.8	50.8	43.2	38.7	30.9				30.0		
32.0			63.7	62.1	55.6	49.7	41.3	38.3	30.6	26.2			32.0		
34.0				59.1	54.4	48.5	40.8	37.9	30.3	25.9	23.4		34.0		
36.0				56.0	52.8	47.5	40.0	37.5	30.1	25.7	23.2	20.3	36.0		
38.0				52.7	50.6	46.6	39.4	37.1	29.9	25.4	23.0	20.2	15.7	38.0	
40.0					49.0	45.9	38.5	36.5	29.7	25.3	22.8	20.1	15.7	40.0	
42.0					46.7	45.4	37.8	35.9	29.3	25.1	22.7	20.1	15.5	42.0	
44.0					44.2	43.8	37.1	35.2	28.9	24.7	22.5	20.0	15.3	44.0	
46.0						41.5	36.2	34.6	28.5	24.5	22.3	19.9	15.1	46.0	
48.0						39.4	35.2	34.1	28.1	24.1	22.2	19.8	14.9	48.0	
50.0							34.4	33.1	27.7	23.9	22.1	19.6	14.7	50.0	
52.0							37.5								
52.0								33.3	32.6	27.2	23.6	21.8	19.3	14.5	52.0
54.0								32.2	32.0	26.9	23.4	21.6	19.0	14.3	54.0
56.0								31.1	30.8	26.5	23.2	21.4	18.8	14.0	56.0
58.0									29.8	26.1	22.9	21.1	18.5	13.8	58.0
60.0										25.8	22.6	20.9	18.2	13.5	60.0
62.0											25.4	22.3	20.6	17.9	62.0
64.0												25.0	21.9	17.7	64.0
66.0													24.4	21.6	66.0
66.0														20.1	66.0
68.0															68.0
68.0															68.0
70.0															70.0
70.0															70.0
72.0															72.0
72.0															72.0
74.0															74.0
74.0															74.0
76.0															76.0
76.0															76.0
78.0															78.0
78.0															78.0
80.0															80.0
80.0															80.0
82.0															82.0
82.0															82.0
84.0															84.0
84.0															84.0
86.0															86.0
86.0															86.0
88.0															88.0
88.0															88.0
90.0															90.0
90.0															90.0
92.0															92.0
92.0															92.0
94.0															94.0

Load Chart - Telescopic Boom + Luffing Jib (TL)

性能表 - 主臂 + 變幅副臂



Unit: t

33.9+5.3	33.9+5.3										33.9+5.3				
	24.0	30.0	36.0	42.0	48.0	54.0	60.0	66.0	72.0	78.0		84.0	90.0		
13.0													13.0		
14.0	97.2												14.0		
16.0	90.9												16.0		
18.0	84.8	73.7											18.0		
20.0	81.2	71.6	72.7										20.0		
22.0	78.2	69.6	70.4	54.8									22.0		
24.0	74.4	67.7	68.1	54.3	48.1								24.0		
26.0	70.5	65.8	65.8	53.6	47.8	42.2							26.0		
28.0		64.0	64.3	53.0	47.3	41.4	36.2						28.0		
30.0		61.8	62.5	52.5	46.9	40.5	35.9	30.1					30.0		
32.0		59.4	60.8	51.3	46.7	38.7	35.5	29.8					32.0		
34.0		57.4	58.8	50.2	46.3	38.1	35.1	29.5	25.0				34.0		
36.0			55.9	49.1	45.9	37.5	34.8	29.2	24.7	22.1			36.0		
38.0			52.4	48.2	45.4	36.9	34.4	29.0	24.5	21.9	17.8		38.0		
40.0			49.2	46.7	44.9	36.0	34.0	28.9	24.2	21.8	17.7	13.7	40.0		
42.0				45.3	44.5	35.4	33.5	28.6	24.1	21.7	17.6	13.6	42.0		
44.0				43.7	43.4	34.7	33.0	28.3	23.9	21.6	17.6	13.4	44.0		
46.0				41.4	41.1	33.8	32.3	27.9	23.5	21.5	17.5	13.3	46.0		
48.0					39.0	32.8	31.7	27.7	23.3	21.3	17.4	13.1	48.0		
50.0					37.1	32.1	31.3	27.3	22.9	21.2	17.3	12.9	50.0		
52.0					35.3	31.1	30.3	27.0	22.8	21.1	17.2	12.8	52.0		
54.0						30.1	29.8	26.5	22.5	21.0	16.9	12.6	54.0		
56.0						29.0	29.3	26.2	22.3	20.7	16.6	12.4	56.0		
58.0						27.8	28.2	25.9	22.1	20.6	16.4	12.2	58.0		
60.0							27.3	25.5	21.8	20.4	16.2	12.0	60.0		
62.0								25.3	21.5	20.1	15.9	11.7	62.0		
64.0								24.9	21.2	20.0	15.7	11.5	64.0		
66.0								24.6	20.9	19.8	15.4	11.3	66.0		
68.0								24.1	20.6	19.5	15.2	11.1	68.0		
70.0									20.4	19.3	15.0	10.9	70.0		
72.0									20.1	19.0	14.4	10.6	72.0		
74.0									19.6	18.6	13.7	10.4	74.0		
76.0										18.2	13.1	10.3	76.0		
78.0										17.7	12.8	10.1	78.0		
80.0										17.0	12.6	10.0	80.0		
82.0										16.2	12.4	9.8	82.0		
84.0											12.1	9.7	84.0		
86.0											11.9	9.6	86.0		
88.0											11.6	9.5	88.0		
90.0												9.4	90.0		
92.0													9.3	92.0	
94.0														9.4	94.0

Load Chart - Telescopic Boom + Luffing Jib (TL)

性能表 - 主臂 + 變幅副臂



Unit: t

Reach (m)	39.5+5.3										Reach (m)		
	24.0	30.0	36.0	42.0	48.0	54.0	60.0	66.0	72.0	78.0		84.0	90.0
13.0													13.0
14.0													14.0
16.0	80.2												16.0
18.0	79.0												18.0
20.0	77.8	62.6	60.8										20.0
22.0	76.0	61.3	59.5										22.0
24.0	73.0	60.1	57.7	50.9									24.0
26.0	70.3	58.8	55.9	50.5	43.6								26.0
28.0	67.0	57.6	54.8	49.8	43.3	39.2	33.6						28.0
30.0		56.5	53.4	49.3	42.9	38.4	33.3	27.3					30.0
32.0		54.9	52.1	48.8	42.6	37.6	33.0	28.9					32.0
34.0		53.3	50.6	47.7	42.3	35.9	32.6	26.7	23.5				34.0
36.0			48.7	46.7	42.0	35.4	32.3	26.4	23.3	18.6			36.0
38.0			46.9	45.8	41.6	34.8	32.0	26.3	23.0	18.6	16.6		38.0
40.0			44.9	44.9	41.2	34.2	31.6	26.2	22.8	18.6	16.6	12.6	40.0
42.0				43.5	40.7	33.4	31.1	26.0	22.6	18.6	16.5	12.6	42.0
44.0				42.2	40.3	32.9	30.6	25.7	22.5	18.6	16.5	12.4	44.0
46.0				40.7	40.1	32.2	30.0	25.4	22.3	18.6	16.4	12.3	46.0
48.0					38.3	31.4	29.5	25.1	22.0	18.6	16.3	12.1	48.0
50.0					36.5	30.5	29.1	24.8	21.7	18.6	16.2	11.9	50.0
52.0					34.7	29.8	28.2	24.5	21.4	18.6	16.1	11.8	52.0
54.0						28.9	27.8	24.2	21.3	18.6	15.8	11.6	54.0
56.0						28.0	27.3	23.9	21.0	18.6	15.6	11.4	56.0
58.0						27.0	26.3	23.6	20.8	18.5	15.4	11.3	58.0
60.0							25.4	23.3	20.6	18.3	15.2	11.1	60.0
62.0								23.1	20.4	18.1	14.9	10.8	62.0
64.0								22.8	20.1	18.0	14.7	10.6	64.0
66.0								22.5	19.8	17.7	14.5	10.4	66.0
68.0								22.1	19.6	17.5	14.3	10.3	68.0
70.0									19.3	17.3	14.1	10.1	70.0
72.0									19.1	17.1	13.5	9.9	72.0
74.0									18.8	16.7	12.9	9.7	74.0
76.0									18.4	16.3	12.4	9.6	76.0
78.0										15.8	12.1	9.4	78.0
80.0										15.2	11.9	9.3	80.0
82.0										14.5	11.7	9.1	82.0
84.0											11.5	9.0	84.0
86.0											11.2	9.0	86.0
88.0											11.0	8.8	88.0
90.0												8.7	90.0
92.0												8.6	92.0
94.0													94.0

Load Chart - Telescopic Boom + Luffing Jib (TL)

性能表 - 主臂 + 變幅副臂



Unit: t

45+5.3	45+5.3											45+5.3	
	24.0	30.0	36.0	42.0	48.0	54.0	60.0	66.0	72.0	78.0	84.0		90.0
13.0													13.0
14.0													14.0
16.0	64.9												16.0
18.0	63.5												18.0
20.0	61.8	54.6											20.0
22.0	60.2	53.5	51.3										22.0
24.0	58.7	52.5	50.1	43.1									24.0
26.0	56.6	51.5	48.6	42.7	36.3								26.0
28.0	55.1	50.6	47.1	42.3	36.1	33.4							28.0
30.0		49.6	46.2	41.5	35.7	32.7	28.1						30.0
32.0		48.4	45.0	40.9	35.4	32.0	27.8	22.6					32.0
34.0		47.1	43.9	40.6	35.3	30.6	27.5	22.3	19.2				34.0
36.0			42.6	40.2	35.0	30.2	27.2	22.1	19.0				36.0
38.0			41.1	39.8	34.6	29.7	27.0	21.9	18.8	15.1			38.0
40.0			40.5	34.8	34.3	29.2	26.7	21.8	18.6	15.1	13.5		40.0
42.0				34.3	33.9	28.5	26.4	21.7	18.4	15.1	13.5	9.1	42.0
44.0				33.5	33.6	28.0	26.0	21.6	18.3	15.1	13.4	9.1	44.0
46.0				32.2	33.4	27.5	25.6	21.3	18.2	15.1	13.4	8.9	46.0
48.0					33.1	26.8	25.1	21.1	18.0	15.1	13.3	8.8	48.0
50.0					31.7	26.1	24.6	20.9	17.8	15.1	13.3	8.7	50.0
52.0					30.4	25.5	24.3	20.7	17.6	15.1	13.2	8.6	52.0
54.0						24.7	23.6	20.5	17.3	15.1	13.1	8.5	54.0
56.0						23.9	23.2	20.2	17.2	15.1	12.8	8.4	56.0
58.0						23.1	22.8	19.9	17.0	15.1	12.7	8.2	58.0
60.0							22.0	19.7	16.8	15.0	12.5	8.1	60.0
62.0							21.2	19.5	16.7	14.8	12.4	8.0	62.0
64.0								19.3	16.5	14.6	12.1	7.8	64.0
66.0								19.1	16.3	14.6	12.0	7.6	66.0
68.0								18.9	16.1	14.4	11.8	7.5	68.0
70.0								18.5	15.8	14.2	11.6	7.4	70.0
72.0								19.6	16.0	14.0	11.5	7.2	72.0
74.0								19.5	15.8	13.8	11.0	7.1	74.0
76.0								19.2	15.6	13.6	10.5	7.0	76.0
78.0									15.2	13.6	10.5	7.0	78.0
80.0										13.2	10.1	6.9	80.0
82.0										12.9	9.9	6.8	82.0
84.0										12.3	9.7	6.7	84.0
86.0											9.6	6.6	86.0
88.0											9.4	6.5	88.0
90.0											9.2	6.4	90.0
92.0												6.3	92.0
94.0												6.2	94.0

Load Chart - Telescopic Boom + Luffing Jib (TL)

性能表 - 主臂 + 變幅副臂



Unit: t

Reach (m)	50.6+5.3										Reach (m)		
	24.0	30.0	36.0	42.0	48.0	54.0	60.0	66.0	72.0	78.0		84.0	90.0
13.0													13.0
14.0													14.0
16.0													16.0
18.0	57.5												18.0
20.0	56.2												20.0
22.0	54.8	47.9											22.0
24.0	53.4	46.6	43.0										24.0
26.0	52.1	45.4	42.0	35.3									26.0
28.0	50.3	44.3	40.8	34.9	28.9								28.0
30.0	48.9	43.2	39.6	34.7	28.6	25.1	21.7						30.0
32.0		42.5	38.8	34.0	28.4	24.7	21.5						32.0
34.0		41.7	37.8	33.5	28.2	24.1	21.3	18.6					34.0
36.0		40.2	36.9	33.2	28.0	23.1	21.1	18.4	14.7				36.0
38.0			35.9	32.9	27.8	22.7	20.9	18.3	14.5	12.0			38.0
40.0			34.6	32.6	27.5	22.3	20.7	18.1	14.4	12.0	10.9		40.0
42.0			34.1	28.4	27.3	22.0	20.4	18.1	14.2	12.0	10.9	5.7	42.0
44.0				28.0	27.0	21.5	20.1	18.0	14.1	12.0	10.8	5.7	44.0
46.0				27.4	26.7	21.1	19.8	17.9	14.0	12.0	10.8	5.6	46.0
48.0				26.4	26.6	20.7	19.4	17.7	14.0	12.0	10.7	5.6	48.0
50.0					26.3	20.2	19.1	17.5	13.8	12.0	10.7	5.5	50.0
52.0					25.3	19.6	18.8	17.4	13.6	12.0	10.6	5.4	52.0
54.0					24.3	19.2	18.3	17.2	13.5	12.0	10.5	5.4	54.0
56.0						18.6	18.0	17.0	13.3	12.0	10.4	5.3	56.0
58.0						18.0	17.7	16.8	13.3	12.0	10.3	5.2	58.0
60.0						17.4	17.0	16.6	13.1	12.0	10.1	5.1	60.0
62.0							16.5	16.5	13.0	11.8	10.0	5.1	62.0
64.0								16.3	12.9	11.7	9.9	4.9	64.0
66.0								16.2	12.7	11.6	9.7	4.9	66.0
68.0								16.0	12.6	11.5	9.6	4.8	68.0
70.0								15.8	12.4	11.4	9.5	4.7	70.0
72.0								15.6	12.3	11.2	9.4	4.6	72.0
74.0									12.1	11.1	9.0	4.5	74.0
76.0									12.0	10.9	8.6	4.4	76.0
78.0									11.8	10.7	8.3	4.4	78.0
80.0										10.4	8.2	4.3	80.0
82.0										10.0	8.1	4.3	82.0
84.0										9.6	8.0	4.2	84.0
86.0											7.8	4.1	86.0
88.0											7.7	4.1	88.0
90.0											7.5	4.1	90.0
92.0												4.0	92.0
94.0												4.0	94.0

Load Chart - Telescopic Boom + Luffing Jib (TL)

性能表 - 主臂 + 變幅副臂



Unit: t

Reach (m)	56.1+5.3										61.7+5.3						Reach (m)									
	24.0	30.0	36.0	42.0	48.0	54.0	60.0	66.0	72.0	78.0	24.0	30.0	36.0	42.0	48.0	54.0		60.0	66.0							
13.0																			13.0							
14.0																			14.0							
16.0																			16.0							
18.0																			18.0							
20.0																			20.0							
22.0	43.3										34.0								22.0							
24.0	42.1	38.7	35.3								33.1								24.0							
26.0	41.0	37.7	34.6								32.2	28.9	26.5						26.0							
28.0	39.9	36.7	33.6								31.3	28.1	26.0						28.0							
30.0	38.5	35.8	32.6	29.9	25.3						30.5	27.4	25.3	23.1					30.0							
32.0		34.9	32.0	29.7	25.1	20.4	16.6					26.7	24.5	22.8	19.5				32.0							
34.0		34.3	31.2	29.1	24.9	20.0	16.4					26.0	24.1	22.6	19.4	15.9	12.9		34.0							
36.0		33.7	30.5	28.7	24.7	19.5	16.2	13.7				25.5	23.5	22.2	19.2	15.6	12.7		36.0							
38.0			29.7	28.5	24.6	18.7	16.1	13.5	11.3				23.0	21.9	19.0	15.3	12.6	9.4	38.0							
40.0			28.7	28.2	24.4	18.4	16.0	13.4	11.2	9.6			22.4	21.7	19.0	14.6	12.5	9.3	40.0							
42.0				28.3	27.9	24.2	18.1	15.8	13.3	11.1	9.6			21.7	21.5	18.8	14.4	12.4	9.2	42.0						
44.0					24.4	24.0	17.8	15.6	13.3	11.0	9.6				21.3	18.6	14.2	12.3	9.1	44.0						
46.0						24.1	23.7	17.5	15.4	13.2	10.9	9.6				18.7	18.5	14.0	12.1	9.1	46.0					
48.0							23.5	23.5	17.2	15.1	13.1	10.8	9.6				18.4	18.3	13.7	11.9	9.1	48.0				
50.0								23.4	16.8	14.8	13.0	10.7	9.6					18.1	13.5	11.8	9.0	50.0				
52.0									23.1	16.4	14.6	12.9	10.6	9.6					18.0	13.2	11.5	8.9	52.0			
54.0										22.2	16.0	14.4	12.8	10.5	9.6					17.8	12.9	11.3	8.8	54.0		
56.0											15.6	14.0	12.7	10.4	9.6						12.5	11.2	8.8	56.0		
58.0												15.2	13.8	12.5	10.3	9.6						12.3	10.9	8.7	58.0	
60.0													14.7	13.5	12.4	10.2	9.6						11.9	8.6	60.0	
62.0															13.1	12.3	10.1	9.6						8.5	62.0	
64.0																12.1	10.0	9.5						8.4	64.0	
66.0																	12.0	9.9	9.4					8.3	66.0	
68.0																		11.9	9.8	9.3					68.0	
70.0																			11.8	9.7	9.2				70.0	
72.0																					9.6	9.1			72.0	
74.0																						9.5	9.0		74.0	
76.0																							9.3	8.9	76.0	
78.0																								9.3	8.8	78.0
80.0																									8.6	80.0
82.0																									8.4	82.0
84.0																									8.1	84.0
86.0																										86.0
88.0																										88.0
90.0																										90.0
92.0																										92.0
94.0																										94.0

Load Chart - Telescopic Boom + Luffing Jib (TL)

性能表 - 主臂 + 變幅副臂

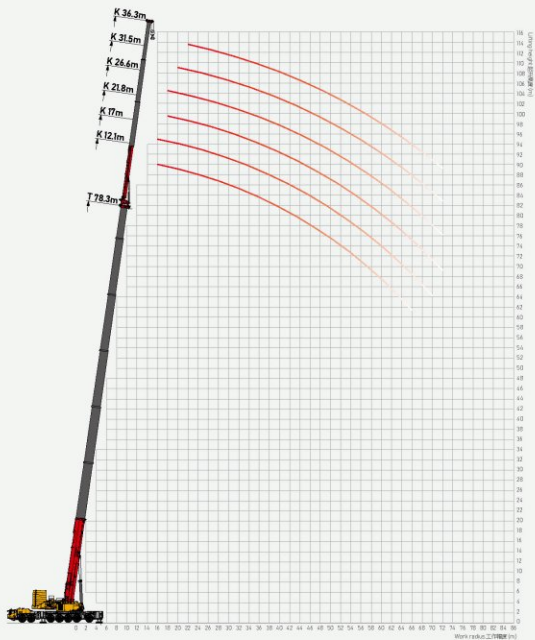


Unit: t

Reach (m)	67.2+5.3						72.7+5.3				78.3+5.3		Reach (m)
	24.0	30.0	36.0	42.0	48.0	54.0	24.0	30.0	36.0	42.0	24.0	30.0	
13.0													13.0
14.0													14.0
16.0													16.0
18.0													18.0
20.0													20.0
22.0													22.0
24.0	26.6												24.0
26.0	25.9						19.8				14.1		26.0
28.0	25.1	21.5	17.8				19.1				13.6		28.0
30.0	24.4	20.9	17.4				18.5	15.6			13.2		30.0
32.0	23.4	20.3	17.0	15.8			18.0	15.2	13.0		12.7	10.9	32.0
34.0		19.8	16.5	15.6	13.3			14.7	12.7			10.5	34.0
36.0		19.3	16.2	15.5	13.2	10.8		14.3	12.3	9.1		10.3	36.0
38.0		18.9	15.8	15.2	13.0	10.6		14.0	12.1	9.0		10	38.0
40.0			15.4	15.0	13.0	10.3			11.8	9.0			40.0
42.0				15.0	14.8	12.9	9.9		11.5	8.8			42.0
44.0				14.5	14.7	12.8	9.7		11.2	8.6			44.0
46.0					14.6	12.7	9.6			8.6			46.0
48.0						12.5	9.4			8.5			48.0
50.0						12.4	9.2						50.0
52.0						12.3	9.0						52.0
54.0						12.2	8.9						54.0
56.0						12.1	8.6						56.0
58.0							8.4						58.0
60.0							8.2						60.0
62.0													62.0
64.0													64.0
66.0													66.0
68.0													68.0
70.0													70.0
72.0													72.0
74.0													74.0
76.0													76.0
78.0													78.0
80.0													80.0
82.0													82.0
84.0													84.0
86.0													86.0
88.0													88.0
90.0													90.0
92.0													92.0
94.0													94.0

Operating Range - Telescopic Boom + Telescopic Jib (TK)

起升高度曲線 - 主臂 + 伸縮副臂



Load Chart - Telescopic Boom + Telescopic Jib (TK)

性能表 - 主臂 + 伸縮副臂



Unit: t

Reach (m)	12.1				17.0				21.8				Reach (m)
	61.7	67.2	72.7	78.3	61.7	67.2	72.7	78.3	61.7	67.2	72.7	78.3	
12.0	36				21								12.0
14.0	36	36	36		21	21	21		20				14.0
16.0	36	36	36	36	21	21	21	21	20	20	20		16.0
18.0	36	36	36	36	21	21	21	21	20	20	20	20	18.0
20.0	36	36	36	36	21	21	21	21	20	20	20	20	20.0
22.0	36	36	36	36	21	21	21	21	20	20	20	20	22.0
24.0	36	36	36	36	21	21	21	21	20	20	20	20	24.0
26.0	34.5	36	36	36	21	21	21	21	19.7	20	20	20	26.0
28.0	33	34.5	36	35	21	21	21	21	19	19.7	20	20	28.0
30.0	31.5	33	33	34	20.6	21	21	21	18.3	19.1	19.5	20	30.0
32.0	30	31.5	31.5	32	20.2	20.8	21	21	17.6	18.3	18.7	19.5	32.0
34.0	28.5	29.5	29.9	29.5	19.7	20.2	20.7	21	16.6	17.5	18.1	18.7	34.0
36.0	27	27.5	28	27.7	19.2	19.7	20.3	20.8	15.6	16.7	17.5	18.2	36.0
38.0	25	25.5	26	26	18.5	19.2	20	20.4	14.6	15.9	16.8	17.5	38.0
40.0	22.8	23.4	24.5	24	17.8	18.4	19.3	20	13.6	14.9	16	16.8	40.0
42.0	20.6	21.1	22	22	17	17.6	18.6	19.3	12.6	13.8	15	16	42.0
44.0	18.6	19.3	19.8	20	16.1	16.8	17.9	18.6	11.6	12.8	13.9	15	44.0
46.0	16.8	17.5	18	18	15.2	16	17.2	17.9	10.8	11.9	12.8	14.1	46.0
48.0	15.2	15.9	16.4	16	14.5	15.2	16.5	17	10	11.1	12	13.2	48.0
50.0	13.8	14.6	15	14.4	13.8	14.4	15.6	15.7	9.2	10.4	11.2	12.4	50.0
52.0	12.6	13.3	13.6	13	13	13.6	14.5	14.2	8.6	9.7	10.5	11.6	52.0
54.0	11.6	11.9	12.2	11.6	12	12.8	13.2	12.8	8.2	9.2	9.9	11	54.0
56.0	10.5	10.7	11.2	10.6	11	12	11.9	11.6	7.8	8.7	9.3	10.2	56.0
58.0	9.3	9.6	10.1	9.6	10	10.5	10.8	10.4	7.5	8.2	8.9	9.4	58.0
60.0	8	8.5	9.2	8.6	9	9.2	9.8	9.6	7.2	7.7	8.5	9	60.0
62.0	6.7	7.4	8.3	7.5	8	7.9	9	8.7	6.9	7.2	8	8.6	62.0
64.0	5.4	6.3	7.4	6.6	7	6.6	8.2	7.7	6.5	6.9	7.5	8.2	64.0
66.0		5.2	6.5	5.9		5.3	7.4	6.7	6.1	6.6	7	7.8	66.0
68.0			5.4	5			6.6	5.7		6.3	6.6	7.5	68.0
70.0			4.1	4.1				4.7		6.1	6.3	6.6	70.0
72.0				3.2				3.7			6.1	6.3	72.0

Load Chart - Telescopic Boom + Telescopic Jib (TK)

性能表 - 主臂 + 伸縮副臂

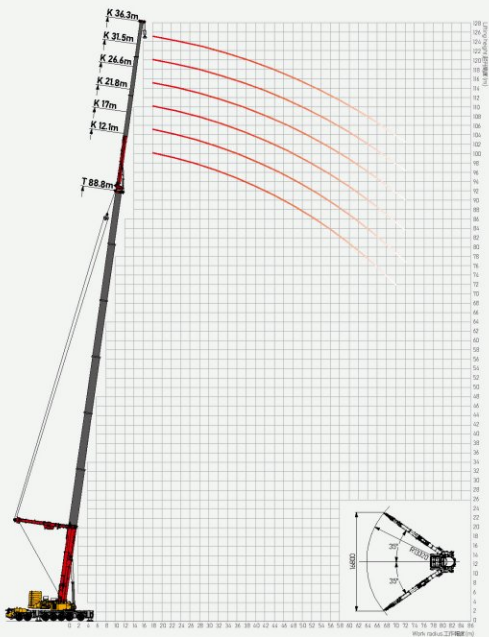


Unit: t

Reach (m)	26.6				31.5				36.3				Reach (m)
	61.7	67.2	72.7	78.3	61.7	67.2	72.7	78.3	61.7	67.2	72.7	78.3	
12.0													12.0
14.0													14.0
16.0	16.5	16.8			11.5								16.0
18.0	15.6	16.1	16.5	16.8	11.2	11.5	11.5		7.7				18.0
20.0	14.8	15.2	15.8	16.1	10.8	11	11.3	11.5	7.6	7.7	7.7		20.0
22.0	14	14.6	15	15.4	10.5	10.8	10.9	11	7.5	7.6	7.6	7.7	22.0
24.0	13.3	13.8	14.4	14.7	10.2	10.3	10.5	10.7	7.4	7.5	7.5	7.6	24.0
26.0	12.7	13	13.7	14	9.7	9.8	10.2	10.4	7.3	7.4	7.4	7.5	26.0
28.0	12	12.4	13	13.4	9.1	9.5	9.7	10.1	7.1	7.3	7.3	7.4	28.0
30.0	11.5	12	12.4	12.7	8.7	9.1	9.4	9.6	6.9	7.1	7.3	7.3	30.0
32.0	11	11.5	12	12.1	8.3	8.7	9	9.3	6.6	6.9	7	7.2	32.0
34.0	10.5	10.9	11.3	11.8	7.9	8.3	8.7	9	6.3	6.6	6.8	7	34.0
36.0	10	10.4	10.8	11.3	7.7	7.9	8.3	8.6	6	6.3	6.5	6.7	36.0
38.0	9.8	10	10.4	10.8	7.4	7.6	7.9	8.3	5.7	6	6.2	6.5	38.0
40.0	9.5	9.7	10	10.4	7.1	7.3	7.7	7.9	5.4	5.8	6	6.3	40.0
42.0	9.2	9.4	9.7	10	6.8	7.1	7.4	7.6	5.3	5.6	5.8	6.1	42.0
44.0	8.8	9.1	9.4	9.7	6.5	6.8	7.1	7.3	5.1	5.4	5.6	5.9	44.0
46.0	8.4	8.7	9.1	9.5	6.3	6.5	6.9	7.1	4.9	5.2	5.4	5.6	46.0
48.0	8	8.4	8.8	9.2	6	6.3	6.6	6.9	4.6	5	5.2	5.4	48.0
50.0	7.5	8	8.4	8.9	5.8	6.1	6.4	6.7	4.5	4.8	5	5.3	50.0
52.0	7.1	7.5	8	8.6	5.5	5.9	6.1	6.5	4.4	4.6	4.9	5.1	52.0
54.0	6.7	7.2	7.6	8.3	5.2	5.7	5.9	6.3	4.3	4.4	4.8	5	54.0
56.0	6.4	6.9	7.2	7.9	5	5.4	5.7	6.1	4.2	4.3	4.6	4.8	56.0
58.0	6.1	6.6	6.9	7.5	4.8	5.2	5.5	5.9	4	4.1	4.5	4.7	58.0
60.0	5.8	6.2	6.6	7.2	4.6	5	5.3	5.8	3.8	4	4.4	4.6	60.0
62.0	5.5	5.9	6.3	6.9	4.4	4.8	5	5.4	3.6	3.9	4.2	4.4	62.0
64.0	5.2	5.6	6	6.6	4.2	4.6	4.9	5.2	3.5	3.8	4.1	4.2	64.0
66.0	4.9	5.3	5.4	6.4	3.9	4.4	4.8	5	3.4	3.7	3.9	4	66.0
68.0	4.6	4.9	4.8	6.2	3.6	4	4.6	4.8	3.2	3.6	3.8	3.7	68.0
70.0	4.3	4.4	4.2	5.8		3.7	4.4	4.6	3	3.5	3.5	3.4	70.0
72.0		3.5	3.6	5.4		3.6	4	4.4		3.2	3.2	3	72.0

Operating Range - Telescopic Boom + Telescopic Jib + Superlift Device (TSK)

起升高度曲線 - 主臂 + 伸縮副臂 + 超起



Load Chart - Telescopic Boom + Telescopic Jib + Superlift Device (TSK)

性能表 - 主臂 + 伸縮副臂 + 超起



Unit: t

Reach	12.1						17.0						21.8						Reach
	61.7	67.2	72.7	78.3	83.8	88.8	61.7	67.2	72.7	78.3	83.8	88.8	61.7	67.2	72.7	78.3	83.8	88.8	
12.0	36						21												12.0
14.0	36	36	36				21	21	21				20						14.0
16.0	36	36	36	36			21	21	21	21			20	20	20				16.0
18.0	36	36	36	36	36	36	21	21	21	21	21		20	20	20	20	20		18.0
20.0	36	36	36	36	36	36	21	21	21	21	21	21	20	20	20	20	20	20	20.0
22.0	36	36	36	36	36	36	21	21	21	21	21	21	20	20	20	20	20	20	22.0
24.0	36	36	36	36	36	36	21	21	21	21	21	21	20	20	20	20	20	20	24.0
26.0	34.5	36	36	36	35.5	35	21	21	21	21	21	21	19.7	20	20	20	20	20	26.0
28.0	33	34.5	36	35	34	32.7	21	21	21	21	21	21	19	19.7	20	20	20	20	28.0
30.0	31.5	33	33	34	31.7	30.4	20.6	21	21	21	21	21	18.3	19.1	19.5	20	20	19.8	30.0
32.0	30	31.5	31.5	32	29.3	28.1	20.2	20.8	21	21	21	21	17.6	18.3	18.7	19.5	20	19.3	32.0
34.0	28.5	29.5	29.9	29.5	27.2	26	19.7	20.2	20.7	21	21	21	16.6	17.5	18.1	18.7	19.5	18.6	34.0
36.0	27	27.5	28	27.7	25	23.9	19.2	19.7	20.3	20.8	20.8	21	15.6	16.7	17.5	18.2	18.7	17.9	36.0
38.0	25	25.5	26	26	22.8	21.8	18.5	19.2	20	20.4	20.4	20.8	14.6	15.9	16.8	17.5	18	17.2	38.0
40.0	22.8	23.4	24.5	24	20.9	19.9	17.8	18.4	19.3	20	20	20.4	13.6	14.9	16	16.8	17.3	16.4	40.0
42.0	20.6	21.1	22	22	19.1	18.2	17	17.6	18.6	19.3	19.2	19.4	12.6	13.8	15	16	16.6	15.6	42.0
44.0	18.6	19.3	19.8	20	17.3	16.5	16.1	16.8	17.9	18.6	18.3	17.5	11.6	12.8	13.9	15	15.9	14.8	44.0
46.0	16.8	17.5	18	18	15.5	14.8	15.2	16	17.2	17.9	16.7	15.7	10.8	11.9	12.8	14.1	15.2	14	46.0
48.0	15.2	15.9	16.4	16	13.7	13.1	14.5	15.2	16.5	17	15.1	14.1	10	11.1	12	13.2	14.5	13.3	48.0
50.0	13.8	14.6	15	14.4	12	11.4	13.8	14.4	15.6	15.7	13.5	12.5	9.2	10.4	11.2	12.4	13.7	12.5	50.0
52.0	12.6	13.3	13.6	13	10.8	10.2	13	13.6	14.5	14.2	12	11.2	8.6	9.7	10.5	11.6	12.9	11.9	52.0
54.0	11.6	11.9	12.2	11.6	9.8	9.2	12	12.8	13.2	12.8	10.9	10.1	8.2	9.2	9.9	11	12.1	11.3	54.0
56.0	10.5	10.7	11.2	10.6	8.8	8.2	11	12	11.9	11.6	9.8	9.2	7.8	8.7	9.3	10.2	11.5	10.7	56.0
58.0	9.3	9.6	10.1	9.6	7.8	7.2	10	10.5	10.8	10.4	8.7	8.3	7.5	8.2	8.9	9.4	10.8	10	58.0
60.0	8	8.5	9.2	8.6	6.8	6.3	9	9.2	9.8	9.6	7.9	7.5	7.2	7.7	8.5	9	10.1	9.4	60.0
62.0	6.7	7.4	8.3	7.5	6	5.6	8	7.9	9	8.7	7.1	6.6	6.9	7.2	8	8.6	9.4	8.9	62.0
64.0	5.4	6.3	7.4	6.6	5.2	4.9	7	6.6	8.2	7.7	6.2	5.7	6.5	6.9	7.5	8.2	8.9	8.4	64.0
66.0		5.2	6.5	5.9	4.4	4.1		5.3	7.4	6.7	5.3	4.9	6.1	6.6	7	7.8	8.4	7.7	66.0
68.0			5.4	5	3.6	3.2			6.6	5.7	4.4	4.1		6.3	6.6	7.5	7.9	7	68.0
70.0			4.1	4.1	2.8	2.5				4.7	3.5	3.3		6.1	6.3	6.6	7.4	6.3	70.0
72.0				3.2						3.7	2.6				6.1	6.3	7	5.6	72.0

Load Chart - Telescopic Boom + Telescopic Jib + Superlift Device (TSK)

性能表 - 主臂 + 伸縮副臂 + 超起



Unit: t

Reach	26.6						31.5						36.3						Reach
	61.7	67.2	72.7	78.3	83.8	88.8	61.7	67.2	72.7	78.3	83.8	88.8	61.7	67.2	72.7	78.3	83.8	88.8	
12.0																			12.0
14.0																			14.0
16.0	16.5	16.8					11.5												16.0
18.0	15.6	16.1	16.5	16.8			11.2	11.5	11.5					7.7					18.0
20.0	14.8	15.2	15.8	16.1	16.5	15	10.8	11	11.3	11.5	11.5			7.6	7.7	7.7			20.0
22.0	14	14.6	15	15.4	15.8	14.5	10.5	10.8	10.9	11	11.2	10.5		7.5	7.6	7.6	7.7	7.7	22.0
24.0	13.3	13.8	14.4	14.7	15	14	10.2	10.3	10.5	10.7	10.9	10		7.4	7.5	7.5	7.6	7.6	24.0
26.0	12.7	13	13.7	14	14.5	13.6	9.7	9.8	10.2	10.4	10.7	9.8		7.3	7.4	7.4	7.5	7.6	26.0
28.0	12	12.4	13	13.4	13.6	13.1	9.1	9.5	9.7	10.1	10.4	9.5		7.1	7.3	7.3	7.4	7.5	28.0
30.0	11.5	12	12.4	12.7	13.1	12.7	8.7	9.1	9.4	9.6	10	9.2		6.9	7.1	7.3	7.3	7.4	30.0
32.0	11	11.5	12	12.1	12.6	12	8.3	8.7	9	9.3	9.6	9		6.6	6.9	7	7.2	7.3	32.0
34.0	10.5	10.9	11.3	11.8	12.4	11.4	7.9	8.3	8.7	9	9.2	8.8		6.3	6.6	6.8	7	7.2	34.0
36.0	10	10.4	10.8	11.3	11.8	11.2	7.7	7.9	8.3	8.6	8.8	8.6		6	6.3	6.5	6.7	6.9	36.0
38.0	9.8	10	10.4	10.8	11.3	10.8	7.4	7.6	7.9	8.3	8.5	8.4		5.7	6	6.2	6.5	6.7	38.0
40.0	9.5	9.7	10	10.4	10.9	10.6	7.1	7.3	7.7	7.9	8.2	8.2		5.4	5.8	6	6.3	6.5	40.0
42.0	9.2	9.4	9.7	10	10.5	10.2	6.8	7.1	7.4	7.6	7.9	8.1		5.3	5.6	5.8	6.1	6.3	42.0
44.0	8.8	9.1	9.4	9.7	10.2	9.9	6.5	6.8	7.1	7.3	7.6	7.9		5.1	5.4	5.6	5.9	6.1	44.0
46.0	8.4	8.7	9.1	9.5	9.9	9.3	6.3	6.5	6.9	7.1	7.4	7.6		4.9	5.2	5.4	5.6	5.8	46.0
48.0	8	8.4	8.8	9.2	9.6	9	6	6.3	6.6	6.9	7.2	7.4		4.6	5	5.2	5.4	5.6	48.0
50.0	7.5	8	8.4	8.9	9.3	8.8	5.8	6.1	6.4	6.7	7	7.2		4.5	4.8	5	5.3	5.4	50.0
52.0	7.1	7.5	8	8.6	9	8.6	5.5	5.9	6.1	6.5	6.7	7		4.4	4.6	4.9	5.1	5.2	52.0
54.0	6.7	7.2	7.6	8.3	8.7	8.4	5.2	5.7	5.9	6.3	6.5	6.7		4.3	4.4	4.8	5	5.1	54.0
56.0	6.4	6.9	7.2	7.9	8.4	8.2	5	5.4	5.7	6.1	6.3	6.5		4.2	4.3	4.6	4.8	5	56.0
58.0	6.1	6.6	6.9	7.5	8.1	8	4.8	5.2	5.5	5.9	6.1	6.3		4	4.1	4.5	4.7	4.8	58.0
60.0	5.8	6.2	6.6	7.2	7.8	7.8	4.6	5	5.3	5.8	5.9	6.1		3.8	4	4.4	4.6	4.6	60.0
62.0	5.5	5.9	6.3	6.9	7.5	7.6	4.4	4.8	5	5.4	5.8	5.9		3.6	3.9	4.2	4.4	4.5	62.0
64.0	5.2	5.6	6	6.6	7.1	7.3	4.2	4.6	4.9	5.2	5.5	5.8		3.5	3.8	4.1	4.2	4.3	64.0
66.0	4.9	5.3	5.4	6.4	6.7	7	3.9	4.4	4.8	5	5.2	5.6		3.4	3.7	3.9	4	4.1	66.0
68.0	4.6	4.9	4.8	6.2	6.3	6.7	3.6	4	4.6	4.8	5	5.4		3.2	3.6	3.8	3.7	3.9	68.0
70.0	4.3	4.4	4.2	5.8	5.9	6.4		3.7	4.4	4.6	4.7	5.2		3	3.5	3.5	3.4	3.7	70.0
72.0		3.5	3.6	5.4	5.5	6.1		3.6	4	4.4	4.3	5		3.2	3.2	3	3.5	3.7	72.0



SANY GROUP CRANE BU

SANY Mobile Crane and Tower Crane Industrial Park

No.168 Jinzhou Avenue, Jinzhou Development Zone, Changsha City, Hunan Province, P.R. China Zip 410600

SANY Crawler Crane Industrial Park

No. 2188 Daishan Road, Wuxing District, Huzhou City, Zhejiang Province, P. R. China Zip 313028

Consulting sanycrane@sanygroup.com (Crane BU) / crd@sany.com.cn (IHQ)

After-sales Service 0086-400 609 8318 (Overseas)

Reminder:

Any change in the technical parameters and configuration due to product modification or upgrade may occur without prior notice. The machine in the picture may include additional equipment. This brochure is for reference only, and goods in kind shall prevail. Copyright at SANY. No part of this brochure may be copied or used for any purpose without written approval from SANY.

© Edited in November 2025

三一集團起重機事業部

三一輪式、塔式起重機事業部 中國湖南省長沙金洲門登徑金洲大道168號 郵編：410600

三一履帶式起重機事業部 中國浙江省湖州市安吉縣雲山鎮2188號 郵編：313028

諮詢：sanycrane@sanygroup.com(三一起重業務) / crd@sany.com.cn(國際總部)

售後服務：0086-400 609 8318(海外)

法律提示

圖片並非實際機型，僅供參考。如有更改，恕不另行通知。三一產品可能因不同改裝、升級而有所差異。以實際為準。
版權為三一所有，未經三一書面許可，不得將本冊內容用於任何商業目的或再編譯。

© 2025年11月10日

SANY GROUP: www.sanygroup.com | SANY USED CRANE: sanysusedcranes.en.alibaba.com

SANY CRANE @sanycrane4878 | Sany-crane | SANYCraneGlobal

