

SANY[®]

i-Cheon **8** **CE**
宜宗重機械有限公司

SPECIFICATION



 60t

 50m

 66.5m

SAC600E

SANY ALL TERRAIN CRANE

台灣經銷商：宜宗重機械有限公司

宏江重機械企業有限公司

展場地址：台中市后里區三線路18-16號

展場電話：04-25590268 / 0975-193161

QUALITY CHANGES THE WORLD

www.sanyglobal.com

It is one of the core business units in SANY Group, specializing in the development and manufacturing of high-end wheel cranes, crawler cranes and tower cranes, including the complete range of wheel cranes from 8 to 2400t, crawler cranes from 25 to 4500t and tower cranes from 6 to 185t.

三一集團旗下核心事業部，從事高噸位輪式起重機、履帶起重機、塔式起重機系列產品的研發製造，覆蓋8-2400噸全噸位輪式起重機，25-4500噸全噸位履帶起重機，6-185噸塔式起重機。



SANY CRANE



SAC600E

SANY ALL TERRAIN CRANE
60T LIFTING CAPACITY

SAC600E is an all-terrain crane with 60t lifting capacity, 6 boom sections totaling 50m, and features wireless remote control of motions, optional anti-electromagnetic interference module, and the brand-new iCab, with driving and operation comfort fully upgraded.

一款最大起重量60噸、6節臂、全伸主臂50米的全地面起重機，動作可以實現無線遙控，可選裝抗電磁幹擾模塊，配備全新上下駕駛室——iCab，駕駛、操作舒適度全面升級。

50m boom

Boom full extension 50m

50m主臂

主臂全伸50m

Wireless remote control

無線遙控



Anti-electromagnetic interference

An anti-electromagnetic interference module adopted, enabling well functioning under strong electric and magnetic conditions (excluding wireless operations)

抗電磁幹擾

通過抗電磁幹擾模塊可以實現在強電強磁下的正常工作 (不含無線操作)

All new iCab design

Ergonomic concept of safety and comfort

全新兩室

操作安全、舒適、人機工程全面升級



NEW GENERATION CAB CAPACIOUS, CONVENIENT AND COMFORTABLE

搭載全新兩室
操作便捷、寬敞舒適

iCab

- Multi-function driver's seat with air suspension
- Double passenger seats foldable to make a berth
- 10.1-inch touch screen integrated with reversing image and multi-media
- Large-field-of-vision rearview mirror with electric heating
- Adjustable high-brightness LED headlamps/fog lamps, providing clear vision at night
- Fully-automatic HVAC

- 氣浮多功能主駕駛座椅
- 副駕駛座椅、可折疊式臥鋪
- 10.1 英寸觸摸屏，集成倒車影像、影音娛樂
- 電動、電加熱後視鏡
- 高亮度可調節 LED 大燈 / 霧燈，夜間視野清晰
- 全自動冷暖空調





iCab

- 0-20° tiltable
- 70° openable front window
- Sliding door, sliding side step
- 10.4-inch LMI display
- Electronic control joysticks
- Adjustable seat with maximum inclination of 140°
- Seat widened to 480mm, legroom increased by 30%
- Fully-automatic HVAC.

- 0-20° 可傾
- 70° 可開式前窗
- 滑移門、滑移踏板
- 10.4英寸力取器顯示屏
- 電控機械手柄
- 可調式座椅,最大後仰140°
- 座椅加寬至480mm,腿部空間擴大30%
- 全自動冷暖空調

Anti-electromagnetic Interference (Optional) 抗電磁幹擾 (選配)

Anti-electromagnetic interference module, allowing the crane to work normally in strong electric field or strong magnetic field ($\leq 20\text{v/m}$ and $>500\text{m}$ away from interference source), including cluster construction of high-power equipment, and the vicinity of multiple interference sources including high-voltage lines, broadcasting base stations, power plants, aluminum plants, radar stations, military bases or mobile communication stations.

配備抗電磁幹擾模塊，實現在電場強度不大於 20v/m 、即時距離 500 米範圍外的強電場、強磁場，如大功率設備集群化施工、聚類高壓線、廣播基站、電廠、鋁廠、雷達基站、軍事基地或移動設備等通信基站附近多個幹擾源的環境中正常工作。



Wireless Remote Control System 無線遙控系統

Main functions

Outrigger control - single-piece / single-side outrigger beam and jack telescoping in/out, and one-button leveling;
Crane operation - boom telescoping, luffing, slewing, hoisting;
Auxiliary action control - counterweight lifting/lowering, jib pushing/pulling, side step extension/retraction, cab tilting, etc.

主要功能

支腿控制——單個和單邊支腿水平伸縮、垂直起落，並支持一鍵調平；
上車作業——實時伸縮臂、起落幅、回轉、卷揚收放纜；
輔助動作操作——配重起落、副臂推拉、澀板伸縮、操作室變位等輔助操作。



- Outrigger status 支腿界面
- Counterweight lifting/lowering, step extension/retraction 配重起落、澀板伸縮
- Main parameters 主要數據顯示界面
- Boom telescoping 起重臂伸縮界面

Working Condition

工況組合

T: Boom

主臂

Max. lifting capacity 最大起重量	60t
Max. boom length 最大臂長	50m
Max. radius 最大幅度	39m
Max. height 最大高度	50.5m

TA: Boom + auxiliary jib (optional)

主臂 + 輔助臂 (選配)

Max. lifting capacity 最大起重量	9.1t
Max. boom + jib length 最大臂長	53m
Max. radius 最大幅度	40m
Max. height 最大高度	53.5m

TH: Boom + hydraulically adjustable jib (optional)

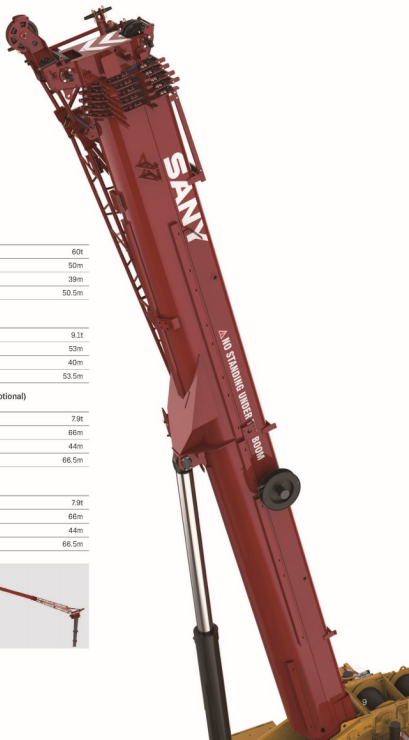
主臂 + 液壓變幅副臂 (選配)

Max. lifting capacity 最大起重量	7.9t
Max. boom + jib length 最大臂長	66m
Max. radius 最大幅度	44m
Max. height 最大高度	66.5m

TJ: Boom + fixed jib (optional)

主臂 + 機械變幅副臂工況 (選配)

Max. lifting capacity 最大起重量	7.9t
Max. boom + jib length 最大臂長	66m
Max. radius 最大幅度	44m
Max. height 最大高度	66.5m



Travel Flexibility

運送能力



Independent front axle steering 30000/40000 t

Independent rear axle steering 40000/60000 t

Reduced swing-out steering 40000/60000 t

Crab steering 40000 t

Forward driving 10000/20000 t

All-wheel steering 20000/30000 t

Traveling with counterweight and hook block unhooked 40000/60000 t



10 t



4.2 t



Axle Load (t)

Axle load (t)	Total weight (t)	Front axle (t)	Rear axle (t)	Wheel Spacing (m)	Wheel load (t)	Remarks
120	100	0-4	88/9600	4.2	7	Hook placed at lower tailhook & rear counterweight unhooked
100	140	0-4	44/9600	10	7	Hook attached to front platform rail, auxiliary hook, rear tool holder attachments locking

Carrier Frame

車架底盤

High strength frame

Carrier frame welded with fine grain high-strength steel plates of box-type section, providing a stronger anti-torsion capability than C-type or H-type construction.

Stable support

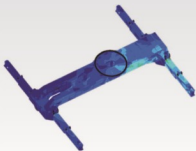
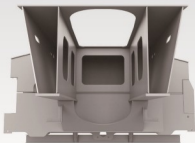
H-type outriggers of 4-point support, which is of same material and design as frame, and helps improve the stability of operation.

高強車架

車架採用箱型高強度鋼板焊接而成，主截面採用抗扭的箱型結構，相比 C 型和工字型結構抗扭能力更強。

穩定支腿

與車架採用相同的材質及設計結構，使用傳統的 H 型 4 點支撐布置，確保作業穩定性。



Power Train

動力系統

Engine

DF Cummins ISLe375 30 in-line six cylinder water-cooled diesel engine, complying with Stage III emission standards.

Rated power: 275kW/2100rpm.

Max. torque: 1550Nm/1100-1400rpm.

Fuel reservoir capacity: 400L.

Transmission

Allison 4500SP 6-speed AT with three-phase torque converter and planetary gear, allowing for smooth start and smooth gearshift.

Braking system

Braking system consisting of disc brake, air chamber and ABS, making the braking performance more reliable and efficient. Optional eddy current retarder, allowing for effective assist braking, reducing the wear of axle brake linings and prolonging service life. Parking brake and service brake equipped for axles 1, 2, 3.

Axles and suspension

Kessler axles with high bearing capacity and reliable quality. Hydro pneumatic suspension system with stroke of $\pm 100\text{mm}$.

Standard 6 \times 4 drive mode, with axles 2, 3 driven.

Optional 6 \times 6 drive mode, with axles 1, 2, 3 driven.

Steering system

Dual-circuit power steering gear, and dual-circuit power steering system, with all axles steered.

發動機

東風康明斯ISLe375 30自列6缸水冷柴油機，滿足歐三排放法規要求。

額定功率：275kW/2100rpm。

最大扭矩：1550Nm/1100-1400rpm。

燃油箱容積400L。

變速箱

Allison 4500SP 使用三相變扭器和行星齒輪的 6 檔 AT 自動變速箱，使車輛起步平穩，換擋平順。

制動系統

由碟式制動器、製動氣室、ABS 主要配件系統組成，制動性能更加可靠、高效。可選裝電液流線減速器，可有效進行輔助制動，減少中樑制動片磨損，提高制動片使用壽命。1 橋、2 橋、3 橋配置駐車制動和行車制動。

車橋懸架

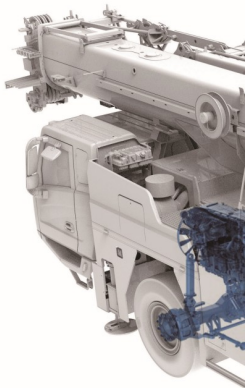
採用 Kessler 中樑，承載能力強，質量可靠。採用油氣懸架系統，懸浮行程 $\pm 100\text{mm}$ 。

標配 6 \times 4 驅動模式下，2、3 橋為驅動橋。

（選配）6 \times 6 驅動，1、2、3 橋為驅動橋。

轉向系統

雙回路動力轉向器，雙回路轉向助力系統，1 橋、2 橋、3 橋均為轉向橋。





Electrical System

電氣系統

Smart CAN-BUS communication system

International advanced CAN-BUS data communication network. CAN-BUS networking applied for display, instrument panel, I/O module and main sensors, allowing for high-speed data transmission, and quick response less than 20ms.

Smart fault diagnosis system

The chassis adopts safety controller functioning smart monitoring, BCM power distribution management and integrated with fault diagnosis system.

AEC-approved console screen

Integrating functions including suspension control, steering control, outrigger control and data calibration.

Precise load moment indicator

SANY independently developed high-precision LMI, with an accuracy of 0-5%.

Cabling

Centralized junction box and heavy-duty connector applied for cabling of superstructure, convenient for maintenance; IP rating up to IP67, ensuring high reliability.

Winch monitoring system

Winch cameras equipped for monitoring its working condition and identifying rope disorder in time.

Integrated bus button panel input

Various operating states displayed by button indicator lights, and one-button multi-functional operation realizable by writing various operation modes.

智能總線通信系統

國際先進的分布式集成總線數據通信網絡。顯示器、顯示儀表、I/O 模塊、主要傳感器等採用 CAN 總線組網，高速信息傳輸，響應速度小於 20ms。

智能故障診斷系統

底盤採用安全主控製器操作裝置帶智能監控、BCM 配電管理，擁有故障診斷系統。

車規級中控屏

集成懸架、轉向、支腿、數據穩定等作業功能。

精準力矩指示系統

三一自主研製的高精度力矩感測器系統。

電纜布線

上車電纜布線採用集中式分線盒及重載連接插件，維護方便，防護等級 IP67，可靠性高。

卷揚監控系統

卷揚攝像頭監視卷揚工作及時發現亂繩的情況。

集成總線按鈕面板輸入

可透過按鈕指示燈顯示各種工作狀態，透過寫入多種操作模式實現一鍵多功能。



Anti-two-block switch
高度限位器



Third wrap indicator
三圈保護器



Cable reel
電纜卷筒



Cable reel inside the boom
臂內卷筒



Anemometer
風速儀



Hydraulic System

液壓系統

Single cylinder pin

6 boom sections of variable length combinations, automatic telescoping, time saving and labor saving.

單缸插銷系統

6 節主臂，可實現更多臂段組合，可自動伸縮，省時省力。

Superstructure

上車

Open-type electronically controlled load-sensing system and closed-type slewing system, enabling combined operation of four actions at the same time.

Electro proportional compensated passive luffing-down system applied to control the luffing speed, making luffing more reliable and stable.

Closed-type slewing system, ensuring no pressure loss and no overflowing noise upon start/stop, and making the operation quieter and more energy-saving.

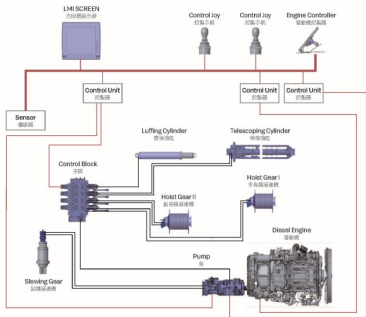
Electronically controlled load-sensing hydraulic system, electronic joystick and electronic throttle, ensuring easy operation and more accurate control and millisecond-level action response speed, with min. single-rope hoisting speed $\leq 1\text{m/min}$.

透過開式電控負載感測系統和閉式旋轉系統，可同時實現四動作聯動；

電比例卸載補償被動俯降系統控制俯降速度，更可靠更平穩；

採用閉式旋轉系統，停機時無壓力損失，無溢流噪聲，更安靜，更節能；

電控負載感測液壓系統，採用電子柄、電液門控閥，輕鬆操作的同時，控制更精準；動作響應毫秒級速度；若繩單繩最低速度 $\leq 1\text{m/min}$ 。



Chassis

下車

Dual circuit • emergency main steering system

Main steering system: Dual oil pump directly connected to the engine to supply oil independently to the steering gear, ensuring efficient and reliable steering.

Emergency steering system: A bidirectional piston pump installed on the transfer case, ensuring steering assistance throughout the traveling.

Electro-hydraulic assisted steering system

A load-sensing piston pump installed to supply oil for assisted steering, which is directly connected to the engine and always in the standby mode, so that the assisted steering system can respond quickly once the assisted steering command is received.

Suspension system

A piston pump adopted as the power source of suspension system, and suspension modes electrically controlled to realize normal driving and driving with CW on board with suspension locked.

Outrigger telescoping system

Full-electric control of outrigger, auto leveling available.

雙回路•應急主轉向系統

主轉向系統：雙聯油泵與發動機直連，獨立對方向機供油，主轉向高效、可靠；

應急轉向系統：採用雙向柱塞泵，安裝在分動箱上，確保車輛行進過程中始終有轉向助力。

電液輔助轉向系統

輔助轉向採用負載敏感柱塞泵提供油源，該油泵與發動機直連，油泵始終處於轉向待機模式，一旦接到輔助轉向指令，輔助轉向系統能夠快速響應。

懸掛系統

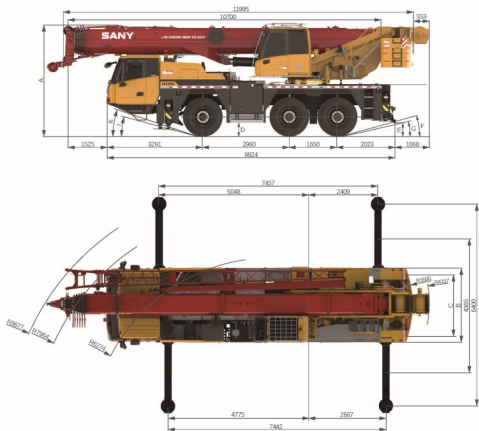
懸掛系統採用柱塞泵作為動力油源，操作方式採用電控，通過選擇不同的懸掛模式可以實現正常行駛和鉗定模式下的帶載行駛。

支腿伸縮系統

支腿伸縮採用全電控方式，可實現支腿的無級伸縮，電控模式下可實現整車自動調平。

Overall Dimensions

整機尺寸



Tire size 輪胎尺寸	A	A*	B	C	D	E	F	G	I	K
Unit 單位	mm	mm	mm	mm	mm	mm	"	"	"	"
385/95R25	3877	3777	2550	2170	436	374	18	12	13	15
445/95R25	3927	3827	2550	2100	486	424	20	14	15	18

Remark: A column is calculated when suspension is at middle level. A* column is calculated when suspension is at lowest level.
 備註: A 列為懸吊處於中位, A* 列為懸吊處於最低位。

Technical Specification

整機參數

CATEGORY 類型	ITEM 項目	UNIT 單位	VALUE 參數	
POWER 發動機參數	Engine model (Emission standard) 發動機型號及排放	-	ISLe375 30 (Stage III)	
	Max. engine power 發動機最大功率	kW/rpm	275/2100	
	Max. engine torque 發動機最大輸出扭矩	N · m/rpm	1550/1100-1400	
TRAVEL 行駛參數	Max. travel speed 最高行駛速度	km/h	80	
	Steering radius 轉彎半徑	Min. steering radius 最小轉彎半徑	m	6.5
		Min. steering radius of boom tip 臂端最小轉彎半徑	m	10
	Wheel formula 車輛模式	-	6 × 4 × 6	
	Min. ground clearance 最小離地間隙	mm	320 (#385 tires)	
	Max. gradeability 最大爬坡度	-	60%	
MAIN PERFORMANCE 主要性能參數	Working temperature range 使用溫度區間	°C	-20-45	
	Min. rated lifting radius 最小額定幅度	m	3	
	Tail slewing radius 轉臺尾部回轉半徑	m	3.59	
	Boom sections (Qty.) 臂節數	-	6	
	Boom shape 臂形狀	-	U shape U 型	
	Max. lifting moment 最大起重力矩	Basic boom 基本臂	kN · m	1861
		Full-extension boom 全伸主臂	kN · m	966
		Full-extension boom+jib 全伸主臂+副臂	kN · m	713
	Boom length 臂長	Basic boom 基本臂	m	10.7
		Full-extension boom 全伸主臂	m	50
		Full-extension boom+jib 全伸主臂+副臂	m	66
	Max. lifting height 最大起重高度	Basic boom 基本臂	m	11
		Full-extension boom 全伸主臂	m	50.5
		Full-extension boom+jib 全伸主臂+副臂	m	66.5
Outrigger span (Longitudinal × Transverse) 支腿跨距 (縱 × 橫)	m	7.45 × 6.4		
Jib offset 副臂安裝角度	°	0, 20, 40		
AIRCONDITIONER 空調	In operator's cab 上車空調	-	Heating & Cooling 製冷、製熱	
	In driver's cab 下車空調	-	Heating & Cooling 製冷、製熱	

Technical Specification

整機參數



Operations 主要動作參數

Item 項目	Single rope speed 單繩速度	Rope diameter/length 鋼絲繩直徑 / 長度	Max. single line pull 最大單繩拉力
Main winch 主卷揚	130m/min	15mm/220m	47.7kN
Auxiliary winch 副卷揚	130m/min	15mm/220m	47.7kN
Slewing 旋轉		1.67/min	
Luffing 起落繩		60s/90s	
Telescoping 伸縮		350s	
Outrigger jack 垂直支腿	Retract 收	40s	
	Extend 放	50s	
Outrigger beam 水平支腿	Retract 收	40s	
	Extend 放	50s	



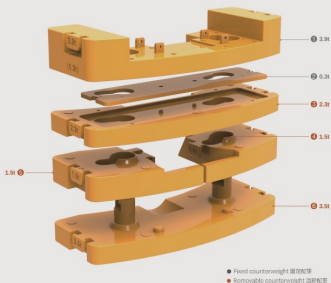
Hook 吊鉤

Type 型號	Load 起重量	Number of sheaves 滑輪數層	Rope rate 倍率	Hook weight 吊鉤重量 /kg
63t ○	60t	7	14	463
50t ○	48.9t	5	11	406
32t ●	32t	3	7	323
16t ○	14.2t	1	3	215
6.3t ●	4.8t	-	1	108

● Standard 標配 ○ Optional 選配

Counterweight Combinations

配重組合

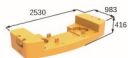


Total weight 總重量	①	②	③	④	⑤	⑥
3.9t	●					
4.2t		●				
6.5t	●	●	●			
10t	●	●	●			●
13t	●	●	●	●	●	●

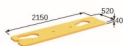
Transport Dimensions

運輸尺寸

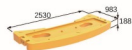
Unit:mm



3.9t



0.3t



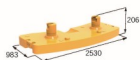
2.3t



1.5t



1.5t



3.5t



6.3t hook block



32t hook block



18t hook block



50t hook block



63t hook block

Crane Introduction

整機介紹

Carrier 下車

 Carrier frame 車架

- Box-type welded structure using high strength steel plate, higher bearing capacity.
- 車架為高強鋼板焊接而成的箱形結構，承載能力強。

 Engine 發動機

- DF Cummins ISLe375 30 in-line six-cylinder diesel engine with watercooler and inter cooler, complying with EU Stage III emission standard.
- Fuel reservoir capacity: 400L.
- 型號：東風康明斯 ISLe375 30，直列六缸、水冷卻、增壓中冷、柴油發動機；排放符合歐三標準。
- 燃料箱有效容積：400L。

 Transmission 變速箱

- Allison auto-transmission, 6 forward gears and 1 reverse gears, large speed ratio range, high torque output.
- Allison 自動變速箱，6 個前進檔，1 個後退檔，速比範圍大，輸出扭矩高。

 Axle 車橋

- All wheel steering, Planetary transmission with differential lock. Driven by axles 2 and 3 (standard equipment).
- Axle 1 steered mechanically with hydraulic booster, axles 2 and 3 steered electro-hydraulically. Easier and better maneuverability.
- 全橋轉向，行星傳動帶有輪間差速鎖，標配 2、3 橋驅動。
- 1 橋採用彈簧反饋的液壓助力轉向系統，2、3 橋採用電液拉製轉向，轉向輕便，操控靈活。

 Suspension 懸掛

- Hydro-pneumatic suspension with hydraulic lock, range ± 100 mm in height. Smooth driving, anti-tipping.
- 全部車橋懸架裝置均為帶液壓閉鎖的油氣懸架裝置，懸掛高度可 ± 100 mm 被動調節，保證車輛行駛的平穩性和側翻穩定性。

 Tire 輪胎


- Size 385/95R25 (standard equipment), radial tires.
- 標配：385/95R25，子午線真空胎。

 Braking 製動系統

- All-wheel air brakes. Dual circuit disc service brake, optional eddy-current retarder available for prolonged life of brakes.
- 全輪氣壓製動器。雙回路製動系統，所有車輪均裝有盤式製動器。選配電渦流緩速器，可減少剎車部件的磨損，節約使用成本。

 Outrigger 支腿

- H-type layout, with hydraulic cylinder, auto-levelling.
- H 形支腿，全液壓伸縮，具備自動調平功能。

 Control system 控制系統

- CAN-BUS communication, 24V DC, two battery sets (180Ah each), manual power-switch.
- Low energy cost (5w) integrated display system, LCD screen.
- 現代數據總線系統，24V 直流電源，2 組蓄電池組，每組 180Ah。可實現下車電源切斷。
- 功率消耗小，最大僅有 5W，顯示採用 LCD 液晶。

Crane Introduction

整機介紹

Operator's cab 操縱室

- Corrosion resistant bodywork of ergonomic design including softened interior trim and adjustable seat.
- 耐腐蝕鋼板，配置軟化內飾、可調式座椅等人性化設計。

Boom system 臂架系統

- U-shape welded structure using high strength steel, single cylinder pin mechanism. 2-stage folding jib offset at 0°, 20°, 40°.
- 主臂由高強度焊接結構鋼製成，U形截面，採用單缸插銷伸縮方式。二節副臂，安裝角度為 0°、20°、40°。

Slewing 回轉機構

- Slewing platform designed by SANY, 360° slewing. Electro-proportional closed type hydraulics for smooth operation and better inching motion performance.
- 轉臺由三一自主設計，360°回轉。採用電比例閉式液壓回路，操縱平滑，回轉啟動性更好。

Hydraulics 液壓系統

- DANFOSS PVG main valve, higher efficiency for single motion and better maneuverability for combined motions.
- Auto adjustable oil pump with higher power use ratio and less energy cost. Variable plunger pump featuring load sensing and constant power control.
- 採用丹佛斯 PVG 主閥，單動作效率更高，組合動作操控性更好。
- 油泵排量實時調節，作業時無能量損耗。變量柱塞泵具有負載感知性及恒功率控制。

Hoist 起升機構

- Main and auxiliary winch wire ropes are 15mm in diameter and 220m in length.
- 主、副卷揚鋼絲繩直徑均為 15mm，長度均為 220m。

Luffing 變幅機構

- Passive luffing down with dynamic compensation. Boom angle: -2°~82°.
- 主動變幅，具有動態補償機構。變幅角度：-2°~82°。

Safety equipment 安全裝置

- Self-developed LMI.
- Hydraulic balance valve, relief valve.
- Third wrap indicator, AZB switch.
- Anemometer at boom tip.
- 三一自主研發力矩限制器。
- 液壓平衡閥、溢流閥。
- 卷揚三圈保護器、高度限位器。
- 臂端風速儀。

Counterweight 配重

- 13t counterweight.
- 13t 配重。

Optional equipment at extra fees 選配

- 63t / 50t / 16t hook blocks.
- Auxiliary winch.
- Auxiliary jib.
- Hydraulic luffing.
- 6 × 6 drive mode.
- Tires size 445/95R25 (6 × 4 drive).
- Fixed jib / Hydraulically adjustable jib.
- Customized painting.
- Other equipment available upon request.
- 63t、50t、16t 吊鉤。
- 副卷揚。
- 副臂架。
- 液壓變幅。
- 6 × 6 驅動模式。
- 445/95R25 輪胎（對應 6 × 4 驅動）。
- 固定副臂 / 液壓變幅副臂。
- 特殊塗裝。
- 其他選配視需求定。

Working Conditions & Code Description

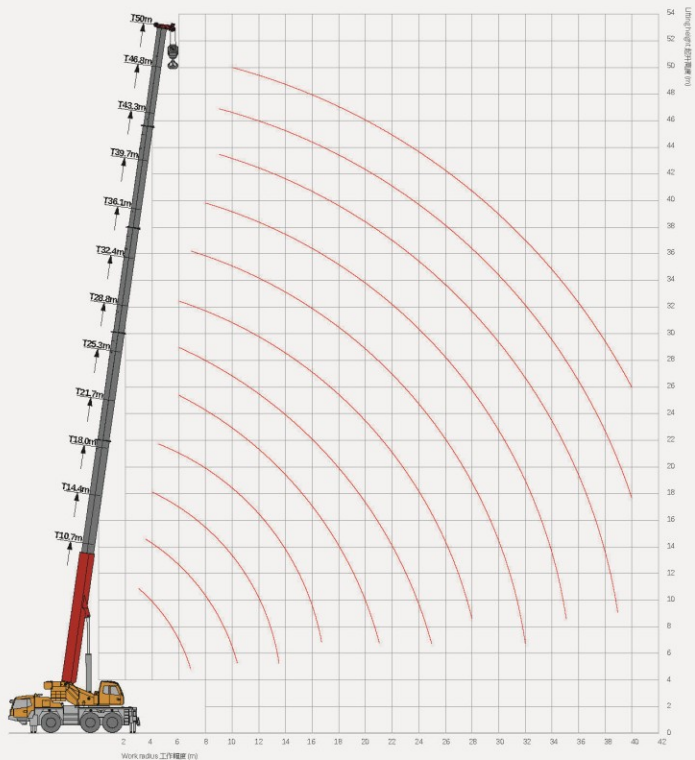
工況組合及工況代碼說明

- T - Telescopic boom 主臂
- J - Fixed jib 固定副臂
- H - Hydraulically adjustable jib 液壓變幅副臂
- A - Auxiliary jib 輔助臂



Operating Range - T

起升高度曲線 - 主臂



Load Chart-T

性能表 - 主臂

Unit: metric ton





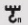



	10.7	14.4	18.0	21.7	25.3	28.8	32.4	36.1	39.7	43.3	46.8	50.0	
3.0	52.8												3.0
3.5	50.0	41.7											3.5
4.0	46.0	38.7	37.7										4.0
4.5	42.2	36.1	35.2	35.0									4.5
5.0	37.0	33.9	33.0	32.7									5.0
6.0	28.8	28.7	29.2	28.9	27.9	24.9	20.2						6.0
7.0	22.3	22.2	22.6	22.3	22.8	23.4	18.2	15.9					7.0
8.0		17.9	18.3	18.0	18.5	19.0	16.5	15.5	12.7				8.0
9.0		14.7	15.2	14.9	15.4	15.8	14.8	14.9	12.5	10.2	7.8		9.0
10.0		12.4	12.9	12.6	13.1	13.5	13.1	13.1	12.1	10.0	7.8	6.4	10.0
11.0		10.7	11.1	10.8	11.2	11.6	11.3	11.3	11.4	9.7	7.7	6.4	11.0
12.0			9.6	9.4	9.7	10.2	9.9	9.9	9.9	9.2	7.5	6.4	12.0
13.0			8.4	8.2	8.6	9.0	8.7	8.6	8.8	8.9	7.2	6.4	13.0
14.0			7.4	7.1	7.5	7.9	7.6	7.6	7.7	7.9	7.0	6.2	14.0
15.0				6.3	6.6	7.0	6.7	6.7	6.9	7.0	6.8	6.1	15.0
16.0				5.5	5.9	6.3	6.0	6.0	6.1	6.3	6.5	6.0	16.0
17.0				4.9	5.2	5.6	5.4	5.4	5.4	5.6	5.8	5.8	17.0
18.0				4.3	4.7	5.1	4.8	4.8	4.9	5.1	5.2	5.3	18.0
19.0					4.2	4.6	4.3	4.3	4.4	4.6	4.8	4.8	19.0
20.0					3.8	4.2	3.9	3.9	3.9	4.1	4.4	4.4	20.0
21.0					3.4	3.7	3.5	3.5	3.6	3.8	3.9	4.0	21.0
22.0						3.4	3.1	3.1	3.2	3.4	3.6	3.6	22.0
23.0						3.1	2.9	2.8	2.9	3.0	3.2	3.3	23.0
24.0						2.8	2.5	2.5	2.7	2.8	3.0	3.0	24.0
25.0						2.6	2.3	2.3	2.4	2.6	2.7	2.8	25.0
26.0							2.1	2.1	2.1	2.3	2.5	2.5	26.0
27.0							1.8	1.8	1.9	2.1	2.3	2.3	27.0
28.0							1.7	1.7	1.7	1.8	2.1	2.1	28.0
29.0								1.4	1.5	1.7	1.8	1.9	29.0
30.0								1.3	1.4	1.6	1.7	1.7	30.0
31.0								1.1	1.2	1.4	1.6	1.6	31.0
32.0								1.0	1.1	1.2	1.4	1.4	32.0
33.0									0.9	1.1	1.3	1.3	33.0
34.0									0.8	1.0	1.2	1.2	34.0
35.0									0.7	0.8	1.0	1.0	35.0
36.0										0.7	0.9	0.9	36.0
37.0											0.8	0.8	37.0
38.0											0.7	0.7	38.0
39.0													39.0
40.0													40.0
	11	10	9	8	7	6	5	4	4	3	3	3	
	14.3	14.3	14.3	12.8	12.8	12.8	11.1	11.1	11.1	11.1	11.1	11.1	
2#	0	0	0	46	46	46	92	92	92	92	92	100	2#
3#	0	46	46	46	46	46	46	92	92	92	92	100	3#
4#	0	0	46	46	46	46	46	46	92	92	92	100	4#
5#	0	0	0	0	46	46	46	46	46	92	92	100	5#
6#	0	0	0	0	0	46	46	46	46	46	92	100	6#

Load Chart-T

性能表 - 主臂

Unit: metric ton





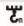
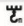


	10.7	14.4	18.0	21.7	25.3	28.8	32.4	36.1	39.7	43.3	46.8	50.0	
3.0	45.0												3.0
3.5	45.0	41.7											3.5
4.0	42.5	38.7	37.7										4.0
4.5	40.5	36.1	35.0	34.0									4.5
5.0	35.0	33.9	33.0	32.0									5.0
6.0	25.2	25.1	25.6	25.3	25.9	24.0	19.5						6.0
7.0	19.4	19.3	19.8	19.5	20.0	20.5	18.2	15.9					7.0
8.0		15.5	15.9	15.6	16.1	16.6	16.2	15.5	12.7				8.0
9.0		12.7	13.1	12.9	13.3	13.8	13.4	13.4	12.5	10.2	7.8		9.0
10.0		10.6	11.1	10.8	11.2	11.7	11.3	11.4	11.5	10.0	7.8	6.4	10.0
11.0		8.9	9.3	9.1	9.5	9.9	9.6	9.6	9.7	9.7	7.7	6.4	11.0
12.0			7.9	7.6	8.1	8.6	8.2	8.2	8.3	8.5	7.5	6.4	12.0
13.0			6.8	6.6	7.0	7.4	7.1	7.1	7.2	7.4	7.2	6.4	13.0
14.0			5.9	5.7	6.1	6.5	6.2	6.2	6.3	6.5	6.7	6.2	14.0
15.0				4.9	5.4	5.7	5.4	5.4	5.5	5.7	5.9	5.9	15.0
16.0				4.3	4.7	5.1	4.8	4.8	4.9	5.0	5.3	5.3	16.0
17.0				3.7	4.2	4.6	4.2	4.2	4.3	4.5	4.7	4.7	17.0
18.0				3.2	3.7	4.1	3.8	3.7	3.9	4.0	4.2	4.2	18.0
19.0					3.2	3.6	3.3	3.3	3.4	3.6	3.8	3.8	19.0
20.0					2.8	3.3	3.0	3.0	3.1	3.2	3.4	3.4	20.0
21.0					2.5	2.9	2.6	2.6	2.7	2.9	3.0	3.1	21.0
22.0						2.6	2.3	2.3	2.4	2.6	2.7	2.7	22.0
23.0						2.3	2.0	2.0	2.1	2.3	2.5	2.5	23.0
24.0						2.1	1.7	1.7	1.9	2.0	2.3	2.3	24.0
25.0						1.8	1.6	1.6	1.6	1.8	2.0	2.1	25.0
26.0							1.3	1.3	1.5	1.6	1.8	1.8	26.0
27.0							1.2	1.2	1.3	1.4	1.6	1.6	27.0
28.0							1.0	1.0	1.1	1.2	1.4	1.4	28.0
29.0								0.9	0.9	1.1	1.3	1.3	29.0
30.0								0.7	0.8	1.0	1.1	1.1	30.0
31.0									0.7	0.8	1.0	1.0	31.0
32.0										0.7	0.9	0.9	32.0
33.0											0.8	0.8	33.0
34.0											0.7	0.7	34.0
35.0													35.0
	11	10	9	8	7	6	5	4	4	3	3	3	
	14.3	14.3	14.3	12.8	12.8	12.8	11.1	11.1	11.1	11.1	11.1	11.1	
2#	0	0	0	46	46	46	92	92	92	92	92	100	2#
3#	0	46	46	46	46	46	46	92	92	92	92	100	3#
4#	0	0	46	46	46	46	46	46	92	92	92	100	4#
5#	0	0	0	0	46	46	46	46	46	92	92	100	5#
6#	0	0	0	0	0	46	46	46	46	46	92	100	6#

Load Chart-T

性能表 - 主臂

Unit: metric ton



	10.7	14.4	18.0	21.7	25.3	28.8	32.4	36.1	39.7	43.3	46.8	50.0	
3.0	43.0												3.0
3.5	43.0	41.7											3.5
4.0	40.1	38.7	36.9										4.0
4.5	37.3	36.0	34.5	32.8									4.5
5.0	30.9	30.7	31.3	31.0									5.0
6.0	22.2	22.0	22.5	22.2	22.8	22.9	19.5						6.0
7.0	17.0	16.9	17.3	17.0	17.5	18.1	17.6	15.0					7.0
8.0		13.4	13.8	13.6	14.0	14.5	14.2	14.2	12.7				8.0
9.0		10.7	11.1	10.9	11.3	11.8	11.5	11.5	11.6	10.2	7.8		9.0
10.0		8.7	9.2	8.9	9.4	9.8	9.4	9.4	9.6	9.8	7.8	6.3	10.0
11.0		7.2	7.6	7.3	7.8	8.3	7.9	7.9	8.0	8.2	7.7	6.3	11.0
12.0			6.5	6.2	6.6	7.1	6.7	6.7	6.9	7.0	7.2	6.3	12.0
13.0			5.5	5.3	5.6	6.1	5.7	5.8	5.9	6.0	6.2	6.3	13.0
14.0			4.7	4.5	4.9	5.3	5.0	5.0	5.1	5.3	5.5	5.5	14.0
15.0				3.8	4.2	4.6	4.3	4.3	4.4	4.6	4.8	4.8	15.0
16.0				3.3	3.6	4.1	3.7	3.8	3.8	4.1	4.2	4.3	16.0
17.0				2.8	3.2	3.6	3.2	3.2	3.4	3.5	3.8	3.8	17.0
18.0				2.4	2.8	3.1	2.8	2.8	3.0	3.1	3.3	3.3	18.0
19.0					2.4	2.8	2.5	2.5	2.5	2.7	2.9	2.9	19.0
20.0					2.0	2.5	2.2	2.1	2.2	2.4	2.6	2.6	20.0
21.0					1.8	2.2	1.8	1.8	1.9	2.1	2.3	2.3	21.0
22.0						1.9	1.6	1.5	1.6	1.8	2.0	2.1	22.0
23.0						1.6	1.4	1.4	1.4	1.6	1.8	1.8	23.0
24.0						1.5	1.2	1.2	1.3	1.4	1.6	1.6	24.0
25.0						1.2	1.0	1.0	1.0	1.2	1.4	1.4	25.0
26.0							0.8	0.8	0.9	1.0	1.2	1.2	26.0
27.0									0.7	0.9	1.1	1.0	27.0
28.0										0.7	0.9	0.9	28.0
29.0											0.7	0.8	29.0
30.0												0.7	30.0
31.0													31.0
32.0													32.0
	11	10	9	8	7	6	5	4	4	3	3	3	
	14.3	14.3	14.3	12.8	12.8	12.8	11.1	11.1	11.1	11.1	11.1	11.1	
2#	0	0	0	46	46	46	46	92	92	92	92	100	2#
3#	0	46	46	46	46	46	46	92	92	92	92	100	3#
4#	0	0	46	46	46	46	46	46	92	92	92	100	4#
5#	0	0	0	0	46	46	46	46	46	92	92	100	5#
6#	0	0	0	0	0	46	46	46	46	46	92	100	6#

Load Chart-T

性能表 - 主臂

Unit: metric ton



	10.7	14.4	18.0	21.7	25.3	28.8	32.4	36.1	39.7	43.3	46.8	50.0	
3.0	43.0												3.0
3.5	43.0	41.7											3.5
4.0	40.1	38.7	36.9										4.0
4.5	33.0	32.9	33.6	31.5									4.5
5.0	26.9	26.7	27.4	26.9									5.0
6.0	19.2	19.1	19.6	19.3	19.8	20.1	18.5						6.0
7.0	14.3	14.3	14.8	14.5	15.0	15.6	15.2	14.6					7.0
8.0		10.9	11.4	11.0	11.6	12.1	11.7	11.6	11.8				8.0
9.0		8.6	9.0	8.7	9.2	9.7	9.4	9.3	9.5	9.7	7.8		9.0
10.0		6.9	7.3	7.0	7.5	7.9	7.6	7.6	7.7	7.9	7.8	6.3	10.0
11.0		5.6	6.1	5.8	6.2	6.7	6.3	6.3	6.4	6.6	6.9	6.3	11.0
12.0			5.0	4.8	5.2	5.7	5.3	5.3	5.4	5.6	5.8	5.8	12.0
13.0			4.2	3.9	4.4	4.8	4.5	4.5	4.6	4.8	5.0	5.0	13.0
14.0			3.5	3.3	3.7	4.1	3.8	3.8	3.9	4.1	4.3	4.3	14.0
15.0				2.7	3.1	3.5	3.3	3.2	3.3	3.5	3.7	3.7	15.0
16.0				2.2	2.7	3.1	2.7	2.8	2.8	3.0	3.2	3.3	16.0
17.0				1.8	2.3	2.6	2.4	2.3	2.4	2.6	2.8	2.8	17.0
18.0				1.5	1.9	2.3	2.0	1.9	2.1	2.2	2.4	2.5	18.0
19.0					1.6	2.0	1.7	1.6	1.7	1.9	2.1	2.2	19.0
20.0					1.3	1.7	1.4	1.3	1.4	1.6	1.8	1.8	20.0
21.0					1.1	1.4	1.1	1.1	1.2	1.4	1.6	1.6	21.0
22.0						1.2	0.9	0.9	1.0	1.2	1.3	1.4	22.0
23.0						1.0	0.7	0.7	0.8	0.9	1.1	1.2	23.0
24.0							0.8			0.8	1.0	1.0	24.0
25.0											0.8	0.8	25.0
26.0											0.7	0.7	26.0
27.0													27.0
28.0													28.0
29.0													29.0
30.0													30.0
31.0													31.0
	11	10	9	8	7	6	5	4	4	3	3	3	
	14.3	14.3	14.3	12.8	12.8	12.8	11.1	11.1	11.1	11.1	11.1	11.1	
2#	0	0	0	46	46	46	92	92	92	92	92	100	2#
3#	0	46	46	46	46	46	46	92	92	92	92	100	3#
4#	0	0	46	46	46	46	46	46	92	92	92	100	4#
5#	0	0	0	0	46	46	46	46	46	92	92	100	5#
6#	0	0	0	0	0	46	46	46	46	46	92	100	6#

Load Chart-T

性能表 - 主臂

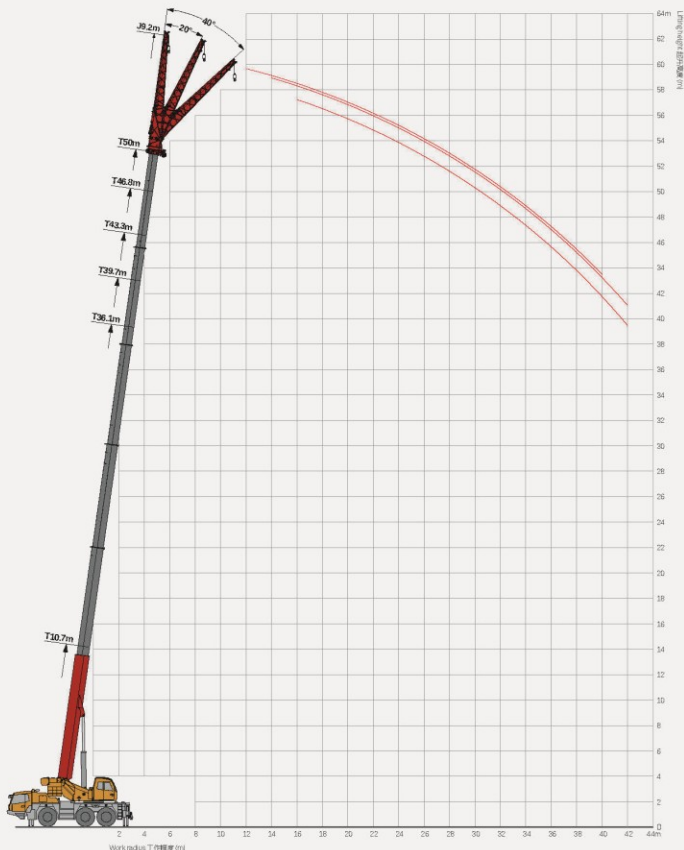
Unit: metric ton



	10.7	14.4	18.0	21.7	25.3	28.8	32.4	36.1	39.7	43.3	46.8	50.0	
3.0	43.0												3.0
3.5	40.0	41.7											3.5
4.0	38.7	38.7	36.9										4.0
4.5	32.5	32.4	33.0	31.0									4.5
5.0	26.5	26.3	26.9	26.6									5.0
6.0	18.9	18.8	19.3	19.0	19.5	19.8	18.3						6.0
7.0	14.0	13.9	14.5	14.2	14.7	15.3	14.9	14.4					7.0
8.0		10.6	11.1	10.8	11.3	11.9	11.5	11.5	11.5				8.0
9.0		8.3	8.8	8.5	9.0	9.5	9.1	9.1	9.3	9.4	7.8		9.0
10.0		6.7	7.2	6.8	7.3	7.8	7.5	7.4	7.6	7.8	7.8	6.3	10.0
11.0		5.5	5.9	5.6	6.0	6.5	6.2	6.2	6.2	6.4	6.7	6.3	11.0
12.0			4.9	4.6	5.0	5.5	5.2	5.1	5.2	5.4	5.7	5.7	12.0
13.0			4.1	3.8	4.2	4.7	4.3	4.3	4.4	4.6	4.9	4.9	13.0
14.0			3.4	3.2	3.5	4.0	3.7	3.6	3.8	3.9	4.2	4.2	14.0
15.0				2.6	3.0	3.5	3.1	3.1	3.2	3.4	3.6	3.7	15.0
16.0				2.2	2.5	2.9	2.7	2.6	2.7	2.9	3.1	3.1	16.0
17.0				1.8	2.1	2.5	2.2	2.3	2.3	2.5	2.7	2.7	17.0
18.0				1.4	1.7	2.2	1.8	1.8	1.9	2.2	2.4	2.4	18.0
19.0					1.5	1.8	1.5	1.6	1.6	1.8	2.0	2.0	19.0
20.0					1.2	1.6	1.3	1.3	1.4	1.5	1.8	1.7	20.0
21.0					1.0	1.3	1.1	1.0	1.2	1.3	1.5	1.5	21.0
22.0						1.1	0.8	0.8	0.9	1.1	1.3	1.3	22.0
23.0						0.9	0.7		0.7	0.9	1.1	1.1	23.0
24.0						0.7				0.7	0.9	0.9	24.0
25.0											0.7	0.8	25.0
26.0													26.0
27.0													27.0
28.0													28.0
29.0													29.0
30.0													30.0
31.0													31.0
	11	10	9	8	7	6	5	4	4	3	3	3	
	14.3	14.3	14.3	12.8	12.8	12.8	11.1	11.1	11.1	11.1	11.1	11.1	
2#	0	0	0	46	46	46	92	92	92	92	92	100	2#
3#	0	46	46	46	46	46	46	92	92	92	92	100	3#
4#	0	0	46	46	46	46	46	46	92	92	92	100	4#
5#	0	0	0	0	46	46	46	46	46	92	92	100	5#
6#	0	0	0	0	0	46	46	46	46	46	92	100	6#

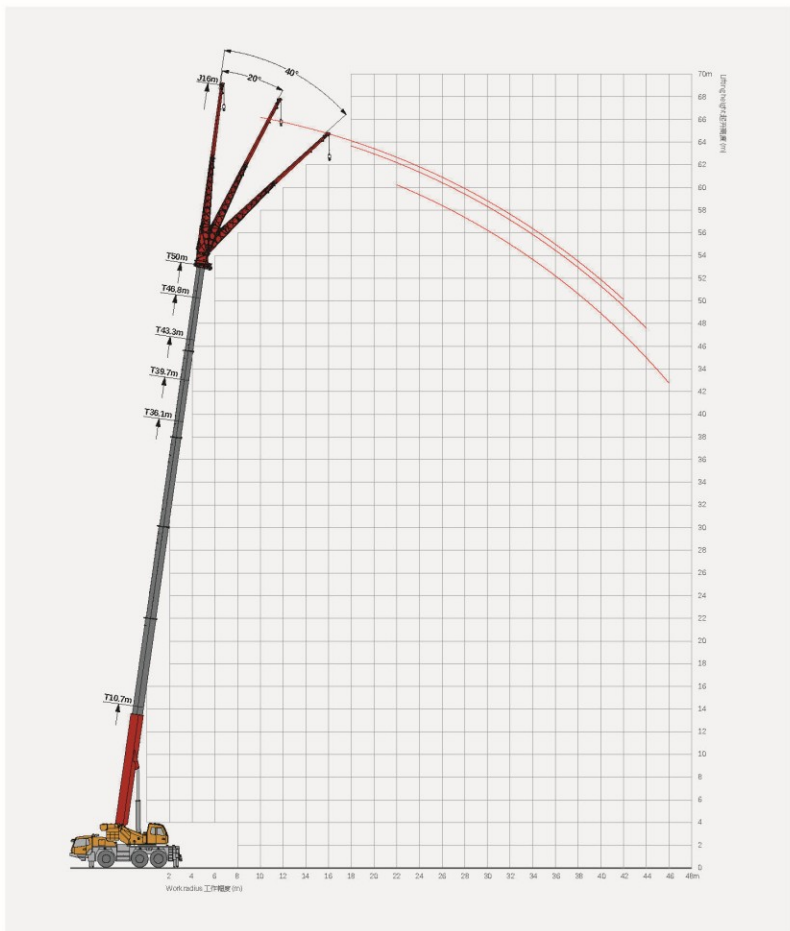
Operating Range - TF

起升高度曲線 - 副臂



Operating Range - T1

起升高度曲線 - 副臂



Load Chart - TJ

性能表 - 副臂



Unit:t

吊钩 m	10.7m+16m			36.1m+16m			39.7m+16m			43.3m+16m			46.8m+16m			50.0m+16m			吊钩 m
	0°	20°	40°	0°	20°	40°	0°	20°	40°	0°	20°	40°	0°	20°	40°	0°	20°	40°	
3	4.1																		3
3.5	4.1																		3.5
4	4.0																		4
4.5	4.0																		4.5
5	3.9																		5
6	3.7																		6
7	3.6	3.4		3.9															7
8	3.4	3.2		3.9			3.5			3.0									8
9	3.2	3.0		3.8			3.4			3.0			2.6						9
10	3.1	2.9		3.8			3.4			3.0			2.6			2.3			10
12	2.8	2.7	2.4	3.7	3.1		3.3			3.0			2.6			2.3			12
14	2.6	2.4	2.3	3.5	3.0		3.2	2.8		2.9	2.7		2.6			2.3			14
16	2.3	2.2	2.3	3.4	2.9	2.4	3.2	2.8		2.9	2.6		2.5	2.4		2.2			16
18	2.0	2.2	2.2	3.3	2.8	2.4	3.1	2.7	2.3	2.8	2.5		2.5	2.3		2.2	2.2		18
20	1.7	1.8	2.1	3.2	2.7	2.3	3.0	2.6	2.3	2.7	2.5	2.2	2.5	2.3	2.1	2.2	2.2		20
22	1.4	1.5	2.0	3.0	2.6	2.3	2.9	2.5	2.2	2.7	2.4	2.2	2.4	2.2	2.1	2.2	2.1	2.0	22
24				2.9	2.5	2.2	2.8	2.4	2.2	2.6	2.3	2.2	2.4	2.2	2.1	2.1	2.1	2.0	24
26				2.8	2.4	2.2	2.6	2.4	2.2	2.5	2.3	2.1	2.3	2.2	2.1	2.1	2.1	2.0	26
28				2.6	2.4	2.2	2.2	2.3	2.1	2.5	2.2	2.1	2.3	2.1	2.1	2.1	2.0	2.0	28
30				2.3	2.3	2.2	1.8	2.2	2.1	2.2	2.2	2.1	2.0	2.1	2.0	1.9	2.0	2.0	30
32				2.0	2.2	2.2	1.5	1.8	2.1	1.8	2.2	2.1	1.6	2.0	2.0	1.6	1.9	1.9	32
34				1.6	1.9	2.1	1.3	1.6	1.7	1.6	1.8	2.1	1.4	1.7	1.9	1.4	1.6	1.9	34
36				1.3	1.6	1.8	1.0	1.3	1.5	1.3	1.6	1.7	1.1	1.4	1.6	1.1	1.4	1.6	36
38				1.0	1.3	1.5	0.8	1.0	1.2	1.2	1.4	1.5	1.0	1.2	1.4	0.9	1.2	1.4	38
40				0.8	1.0			0.8	1.0	1.0	1.1	1.3	0.7	1.0	1.1	0.7	1.0	1.1	40
42					0.8				0.7		0.8	0.9	1.1		0.8	0.9		0.8	42
44											0.8	0.9			0.7			0.7	44
46																			46
48																			48
吊钩	1	1	1	1	1	1	1	1	1	1	1	1	1	1	1	1	1	1	吊钩
吊钩	9.0	9.0	9.0	9.0	9.0	9.0	9.0	9.0	9.0	9.0	9.0	9.0	9.0	9.0	9.0	9.0	9.0	9.0	吊钩
2#	0	0	0	92	92	92	92	92	92	92	92	92	92	92	92	100	100	100	2#
3#	0	0	0	92	92	92	92	92	92	92	92	92	92	92	92	100	100	100	3#
4#	0	0	0	46	46	46	46	92	92	92	92	92	92	92	92	100	100	100	4#
5#	0	0	0	46	46	46	46	46	46	92	92	92	92	92	92	100	100	100	5#
6#	0	0	0	46	46	46	46	46	46	46	46	46	92	92	92	100	100	100	6#

Load Chart - TJ

性能表 - 副臂

Unit: metric ton





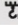

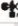


吊钩 Hook	10.7m+16m			36.1m+16m			39.7m+16m			43.3m+16m			46.8m+16m			50.0m+16m			吊钩 Hook
	0°	20°	40°	0°	20°	40°	0°	20°	40°	0°	20°	40°	0°	20°	40°	0°	20°	40°	
3	4.1																		3
3.5	4.1																		3.5
4	4.0																		4
4.5	4.0																		4.5
5	3.9																		5
6	3.7																		6
7	3.6	3.4			3.9														7
8	3.4	3.2			3.9			3.5			3.0								8
9	3.2	3.0			3.8			3.4			3.0			2.6					9
10	3.1	2.9			3.8			3.4			3.0			2.6			2.3		10
12	2.8	2.7	2.4		3.7	3.1		3.3			3.0			2.6			2.3		12
14	2.6	2.4	2.3		3.5	3.0		3.2	2.8		2.9	2.7		2.6			2.3		14
16	2.3	2.2	2.3		3.4	2.9	2.4	3.2	2.8		2.9	2.6		2.5	2.4		2.2		16
18	2.0	2.2	2.2		3.3	2.8	2.4	2.6	2.7	2.3	2.8	2.5		2.5	2.3		2.2	2.2	18
20	1.7	1.8	2.1		2.5	2.7	2.3	1.9	2.6	2.3	2.3	2.5	2.2	2.1	2.3	2.1	2.1	2.2	20
22	1.4	1.5	2.0		1.9	2.6	2.3	1.5	2.0	2.2	1.8	2.4	2.2	1.6	2.2	2.1	1.6	2.1	22
24					1.4	2.0	2.2	1.1	1.6	2.0	1.4	1.9	2.2	1.2	1.7	2.1	1.2	1.6	24
26					1.0	1.5	2.0	0.8	1.2	1.6	1.1	1.5	1.9	0.9	1.3	1.7	0.9	1.3	26
28						1.1	1.5		0.9	1.2	0.8	1.2	1.5		1.0	1.4		1.0	28
30						0.8	1.2			0.9	0.9	1.2		0.8	1.1		0.7	1.0	30
32							0.8			0.7		0.7		0.9		0.8		0.8	32
34													0.7						34
36																			36
	1	1	1	1	1	1	1	1	1	1	1	1	1	1	1	1	1	1	
	9.0	9.0	9.0	9.0	9.0	9.0	9.0	9.0	9.0	9.0	9.0	9.0	9.0	9.0	9.0	9.0	9.0	9.0	
	0	0	0	92	92	92	92	92	92	92	92	92	92	92	92	100	100	100	2#
	0	0	0	92	92	92	92	92	92	92	92	92	92	92	92	100	100	100	3#
	0	0	0	46	46	46	46	46	46	46	46	46	46	46	46	100	100	100	4#
	0	0	0	46	46	46	46	46	46	46	46	46	46	46	46	100	100	100	5#
	0	0	0	46	46	46	46	46	46	46	46	46	46	46	46	92	92	100	6#

Load Chart - TJ

性能表 - 副臂

Unit:t



	10.7m+9.2m			36.1m+9.2m			39.7m+9.2m			43.3m+9.2m			46.8m+9.2m			50.0m+9.2m			
	0°	20°	40°	0°	20°	40°	0°	20°	40°	0°	20°	40°	0°	20°	40°	0°	20°	40°	
3	7.9																		3
3.5	7.7	6.7																	3.5
4	7.4	6.7																	4
4.5	7.1	6.7																	4.5
5	6.8	6.7																	5
6	6.3	6.5	5.2	7.6															6
7	5.8	6.1	5.2	7.6			6.3												7
8	5.2	5.7	5.2	7.5			6.3			5.3									8
9	4.7	5.3	5.1	7.4	6.5		6.3			5.3									9
10	4.2	4.9	4.9	7.2	6.4		6.3	5.8		5.3									10
12	3.3	4.0	4.2	7.0	6.1	5.2	6.1	5.6	4.9	5.3	4.8		3.9	4.0		3.4			12
14	2.7	3.3	3.4	6.7	5.8	5.1	6.0	5.4	4.9	5.2	4.8	4.5	3.9	3.9		3.4	3.4		14
16	2.0	2.5	2.4	6.4	5.5	4.9	5.8	5.2	4.7	5.0	4.7	4.3	3.8	3.8	3.6	3.4	3.4	3.3	16
18				5.8	5.3	4.7	5.5	5.0	4.5	4.8	4.5	4.2	3.7	3.6	3.5	3.3	3.3	3.2	18
20				5.2	5.0	4.6	4.7	4.8	4.3	4.5	4.2	4.1	3.6	3.5	3.3	3.2	3.2	3.1	20
22				4.3	4.7	4.3	4.3	4.3	4.1	3.9	4.0	3.9	3.4	3.4	3.2	3.1	3.0	3.0	22
24				3.6	3.9	4.0	3.8	3.8	4.0	3.3	3.6	3.7	3.1	3.2	3.1	2.9	2.9	2.9	24
26				3.0	3.3	3.5	3.4	3.5	3.6	2.8	3.1	3.2	2.6	2.8	3.0	2.6	2.8	2.8	26
28				2.4	2.7	2.9	3.0	3.1	3.1	2.4	2.6	2.8	2.2	2.4	2.6	2.2	2.4	2.6	28
30				2.0	2.2	2.4	2.6	2.8	2.8	2.1	2.3	2.4	1.8	2.0	2.2	1.8	1.9	2.2	30
32				1.7	1.8	2.0	2.3	2.4	2.5	1.7	1.9	1.9	1.5	1.7	1.8	1.5	1.7	1.8	32
34				1.3	1.5		2.0	2.1	2.2	1.4	1.6	1.7	1.2	1.4	1.5	1.2	1.4	1.5	34
36				1.1	1.1		1.7	1.8		1.2	1.3	1.4	1.0	1.1	1.3	1.0	1.1	1.3	36
38				0.8	0.9		1.4	1.5		1.0	1.2		0.8	1.0	1.0	0.8	0.9	1.0	38
40							1.2	1.3		0.8	0.9			0.7	0.8		0.7	0.8	40
42							1.1	1.1		0.7	0.8								42
44							0.9												44
	2	2	2	2	2	2	2	2	2	2	1	1	1	1	1	1	1	1	
	9.0	9.0	9.0	9.0	9.0	9.0	9.0	9.0	9.0	9.0	9.0	9.0	9.0	9.0	9.0	9.0	9.0	9.0	
	2#	0	0	0	92	92	92	92	92	92	92	92	92	92	92	100	100	100	2#
	3#	0	0	0	92	92	92	92	92	92	92	92	92	92	92	100	100	100	3#
	4#	0	0	0	46	46	46	46	46	46	46	46	46	46	46	100	100	100	4#
	5#	0	0	0	46	46	46	46	46	46	46	46	46	46	46	100	100	100	5#
	6#	0	0	0	46	46	46	46	46	46	46	46	46	46	46	100	100	100	6#

Load Chart - TJ

性能表 - 副臂

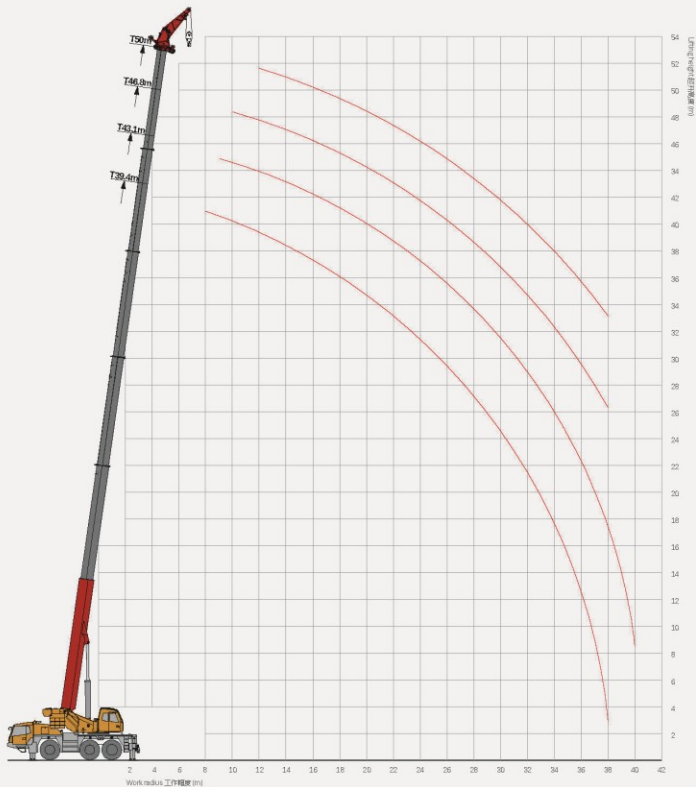
Unit: metric ton



T	10.7m+9.2m			36.1m+9.2m			39.7m+9.2m			43.3m+9.2m			46.8m+9.2m			50.0m+9.2m			T
	0°	20°	40°	0°	20°	40°	0°	20°	40°	0°	20°	40°	0°	20°	40°	0°	20°	40°	
3	7.9																		3
3.5	7.7	6.7																	3.5
4	7.4	6.7																	4
4.5	7.1	6.7																	4.5
5	6.8	6.7																	5
6	6.3	6.5	5.2	7.6															6
7	5.8	6.1	5.2	7.6			6.3												7
8	5.2	5.7	5.2	7.5			6.3			5.3									8
9	4.7	5.3	5.1	7.4	6.5		6.3			5.3									9
10	4.2	4.9	4.9	7.2	6.4		6.3	5.8		5.3									10
12	3.3	4.0	4.2	6.9	6.1	5.2	6.1	5.6	4.9	5.3	4.8		3.9	4.0			3.4		12
14	2.7	3.3	3.4	5.1	5.8	5.1	6.0	5.4	4.9	4.7	4.8	4.5	3.9	3.9			3.4	3.4	14
16	2.0	2.5	2.4	3.8	4.5	4.9	4.7	5.2	4.7	3.5	4.0	4.3	3.3	3.8	3.6	3.3	3.4	3.3	16
18				2.9	3.4	3.8	3.7	4.2	4.5	2.8	3.1	3.5	2.5	2.9	3.3	2.5	2.9	3.2	18
20				2.1	2.6	2.9	2.9	3.3	3.6	2.2	2.5	2.8	1.9	2.3	2.6	1.9	2.3	2.6	20
22				1.6	1.9	2.3	2.3	2.7	2.9	1.7	2.0	2.2	1.4	1.7	2.0	1.4	1.8	2.0	22
24				1.1	1.4	1.7	1.8	2.1	2.3	1.3	1.6	1.7	1.1	1.4	1.6	1.1	1.3	1.5	24
26				0.7	1.0	1.2	1.4	1.7	1.8	1.0	1.2	1.4	0.8	1.0	1.2	0.7	1.0	1.2	26
28						0.8	1.1	1.3	1.5	0.7	0.9	1.1		0.7	0.9		0.7	0.9	28
30							0.8	1.0	1.1			0.8							30
32								0.7	0.8										32
T	2	2	2	2	2	2	2	2	2	2	1	1	1	1	1	1	1	1	T
360°	9.0	9.0	9.0	9.0	9.0	9.0	9.0	9.0	9.0	9.0	9.0	9.0	9.0	9.0	9.0	9.0	9.0	9.0	360°
2#	0	0	0	92	92	92	92	92	92	92	92	92	92	92	100	100	100	100	2#
3#	0	0	0	92	92	92	92	92	92	92	92	92	92	92	100	100	100	100	3#
4#	0	0	0	46	46	46	46	46	46	46	46	46	46	46	100	100	100	100	4#
5#	0	0	0	46	46	46	46	46	46	46	46	46	46	46	100	100	100	100	5#
6#	0	0	0	46	46	46	46	46	46	46	46	46	46	46	100	100	100	100	6#

Operating Range - TA

起升高度曲線 - 鵝頭臂




Load Chart - TA

性能表 - 鵝頭臂

Unit: metric ton




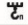



	39.4	43.1	46.8	50.0		
8	9.1				8	
9	8.8	7.4			9	
10	8.6	7.2	6.5		10	
12	7.8	6.9	6.2	5.5	12	
14	7.2	6.5	6.0	5.3	14	
16	6.5	6.0	5.6	5.0	16	
18	5.5	5.5	5.3	4.8	18	
20	4.9	4.7	4.9	4.4	20	
22	4.2	4.2	4.2	4.1	22	
24	3.7	3.6	3.5	3.5	24	
26	3.2	3.1	2.9	2.9	26	
28	2.7	2.6	2.4	2.4	28	
30	2.3	2.2	2.2	2.0	30	
32	2.0	1.8	1.9	1.6	32	
34	1.7	1.5	1.6	1.3	34	
36	1.4	1.2	1.3	1.0	36	
38	1.2	1.0	1.0	0.8	38	
40		0.8			40	
	2	2	2	2		
	9.0	9.0	9.0	9.0		
	2#	0	46	92	100	2#
	3#	92	92	92	100	3#
	4#	92	92	92	100	4#
	5#	92	92	92	100	5#
	6#	92	92	92	100	6#

Load Chart - TA

性能表 - 鵝頭臂

Unit: metric ton



	39.4	43.1	46.8	50.0		
8	9.1				8	
9	8.8	7.4			9	
10	8.6	7.2	6.5		10	
12	7.8	6.9	6.2	5.5	12	
14	7.2	6.5	6.0	5.3	14	
16	6.5	6.0	5.6	5.0	16	
18	5.4	5.2	5.0	4.8	18	
20	4.5	4.3	4.0	4.0	20	
22	3.6	3.5	3.3	3.3	22	
24	3.0	2.9	2.6	2.7	24	
26	2.5	2.4	2.1	2.1	26	
28	2.1	1.9	1.7	1.7	28	
30	1.7	1.5	1.3	1.3	30	
32	1.4	1.3	1.0	1.0	32	
34	1.1	1.0	0.8	0.7	34	
36	0.9	0.7			36	
	2	2	2	2		
	9.0	9.0	9.0	9.0		
	2#	0	46	92	100	2#
	3#	92	92	92	100	3#
	4#	92	92	92	100	4#
	5#	92	92	92	100	5#
	6#	92	92	92	100	6#

Load Chart - TA

性能表 - 鵝頭臂

Unit: metric ton



	39.4	43.1	46.8	50.0	
	39.4	43.1	46.8	50.0	
8	9.1				8
9	8.8	7.4			9
10	8.6	7.2	6.5		10
12	7.8	6.9	6.2	5.5	12
14	7.0	6.5	6.0	5.3	14
16	5.5	5.3	5.0	5.0	16
18	4.4	4.2	3.9	3.9	18
20	3.5	3.3	3.1	3.1	20
22	2.9	2.7	2.5	2.5	22
24	2.3	2.1	1.9	1.9	24
26	1.8	1.7	1.4	1.5	26
28	1.5	1.3	1.1	1.1	28
30	1.1	1.0	0.8	0.8	30
32	0.9	0.7			32
	2	2	2	2	
	9.0	9.0	9.0	9.0	
2#	0	46	92	100	2#
3#	92	92	92	100	3#
4#	92	92	92	100	4#
5#	92	92	92	100	5#
6#	92	92	92	100	6#

Unit: metric ton



	39.4	43.1	46.8	50.0	
	39.4	43.1	46.8	50.0	
8	9.1				8
9	8.8	7.4			9
10	8.6	7.2	6.5		10
12	7.5	6.9	6.2	5.5	12
14	5.6	5.4	5.2	5.2	14
16	4.3	4.2	3.9	3.9	16
18	3.4	3.2	3.0	3.0	18
20	2.6	2.5	2.2	2.2	20
22	2.1	1.9	1.7	1.6	22
24	1.6	1.4	1.2	1.2	24
26	1.2	1.0	0.8	0.8	26
28	0.9	0.7			28
	2	2	2	2	
	9.0	9.0	9.0	9.0	
2#	0	46	92	100	2#
3#	92	92	92	100	3#
4#	92	92	92	100	4#
5#	92	92	92	100	5#
6#	92	92	92	100	6#



SANY GROUP CRANE BU

SANY Mobile Crane Industrial Park, No.168 Jinzhou Avenue, Jinzhou Development Zone, Chongsha City,
Hunan Province, P.R. China Zip 410600
Consulting sanycrane@sanygroup.com (Crane BU) / crd@sany.com.cn (IHQ)
After-sales Service 0086-400 6098 318

Reminder:

Any change in the technical parameters and configuration due to product modification or upgrade may occur without prior notice.
The machine in the picture may include additional equipment. This brochure is for reference only, and goods in kind shall prevail.
Copyright © SANY. No part of this brochure may be copied or used for any purpose without written approval from SANY.

© Edited in June 2024.

三一集團起重機事業部

中國湖南長沙金洲開發區金洲大道168號三一汽車起重機產業園 郵編：410600
諮詢：sanycrane@sanygroup.com（起重事業部）/crd@sany.com.cn（國際總部）
海外售後服務：0086-400 6098 318

溫馨提示：

由於技術不斷更新，產品參數及配置如有更改，恕不另行通知。圖中機器均為示例設備，具體規格請參考，以圖物為準。
版權為三一所有，未經三一書面許可，本圖件任何內容不得被複製或作他用。

© 2024年6月版

