

**SANY**

**i-Cheon3**  
宜宗重機械有限公司

# SPECIFICATION



 120t

 60m

 87m

# STC1200T6

SANY TRUCK CRANE

台灣經銷商：宜宗重機械有限公司

宏江重機械企業有限公司

展場地址：台中市后里區三線路18-16號

展場電話：04-25590268 / 0975-193161

QUALITY CHANGES THE WORLD

[www.sanyglobal.com](http://www.sanyglobal.com)



### Super load capacity

#### 價越起重性能

60m full-extension large oval-shape section boom, 17.5 jib, 9.5m boom extension, leading in industry.

Max. lifting moment of basic boom 3557.4kN-m, max. lifting moment of full extension boom 2293.2kN-m.

Max. capacity of full-extension boom 13.5t, 7% stronger in same class.

Outriggers span 8 × 6.53m, total counterweight 30.2t.

大截面型主臂，全伸臂長 60m，副臂長 17.5m，選配 9.5m 延伸臂，行業領先。

基本臂最大起重力矩 3557.4kN·m，全伸臂最大起重力矩 2293.2kN·m。

全伸臂最大吊重 13.5t，全伸臂高吊工況領先 7% 以上。

支腿跨距 8 × 6.53m，全配重 30.2t。



### Double pump intelligent flow distribution system

#### 雙泵智能流量分配系統

Globally well-known brand oil pump motor, min. winch single rope speed is less than 1.5m/min, min. stable slewing speed is less than 0.1°/s, easy to realize mm-level high precision operation.

Double pump intelligent flow distribution system to realize independent luffing and confluence telescoping, combined motion stability increased by more than 50%.

The electronically controlled system can save 15% energy and improve the efficiency of heavy load operation by 30%.

國際知名品牌油泵馬達，卷揚單繩最低速度小於 1.5m/min，回轉最低穩定小於 0.1°/s，輕鬆實現毫米級吊裝。

全新開發雙泵智能流量分配系統，雙臂獨立，伸臂合流，復合動作平穩性提升 50% 以上。電控系统使上車平載綜合節能 15%，重載作業效率提升 30%。

## SANY TRUCK CRANE STC1200T6 / 120T LIFTING CAPACITY



## Strong bearing chassis

### 高承載能力底盤

New 2.8m wide chassis, lower positioned front outrigger in H-layout plus high-strength rectangular cross-section frame, improving torsion and bending resistance and working convenience.

DF CUMMINS 1550N-m high torque engine, 10-speed FAST gearbox with emergency steering, HANDE heavy-duty axle, the max. gradeability 45%, fuel consumption 45L per 100 km, equipped with counterweight support, able to travel slowly with 19.2t counterweight in short distance. The front axle is equipped with new large-size drum brake, which can increase the braking torque by 25%, reduce heat and make it more reliable.

G Class chassis, no front guard, ground clearance 430mm, approach / departure angle 18/13°, accessibility is excellent.

All-wheel steering mode.

Equipped with 450L large volume fuel reservoir with endurance mileage.

全新 2.8m 寬底盤，低前置 H 型活動支腿 + 高強度矩形截面車架，提升吊載抗扭抗彎能力和作業便利性。

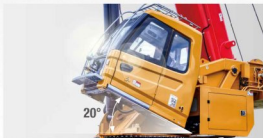


康明斯 1550N-m 大扭矩發動機，法士特 10 檔液力變矩器，漢德重承載車橋，最大爬坡度 45%，百公里油耗 45L，帶配重支撐，可帶 19.2t 配重短距離低速行駛，前橋配備全新大尺寸鼓式制動器，制動力增加 25%，發熱少，更可靠。  
G 類車架，無前擋，離地間隙 430mm，接近 / 離去角 18/13°，通過性優越。  
全輪轉向模式。  
配置 450L 大容積燃油箱，續航能力優越。



## User friendly cab

### 人性化操縱系統



20° tiltable operator's cab perfectly arranged with new interior decor, the new comfortable seat movable in a range of 150 mm and tiltable by 140°. Large size window and skylight increases visibility to secure clear view for load operation near or far away.

The new 7-outlet air-conditioning system, switch button integrated in front panel, easy to operate.

The new membrane switch button is adopted and placed ergonomically. The operator can touch the buttons without bending forward. Mobile phone support, cup holder and rear shelf available.

Both sides of the chassis are equipped with a 300 mm widened foot ladder, and the superstructure is equipped with a maintenance staircase.

全新設計內飾 20° 可仰駕駛室，設計最優安裝位置，選用全新舒適座椅，前後移動距離 150mm，可仰 140°，操縱室前方視野清空，遠近距離吊載，視野全線最佳。

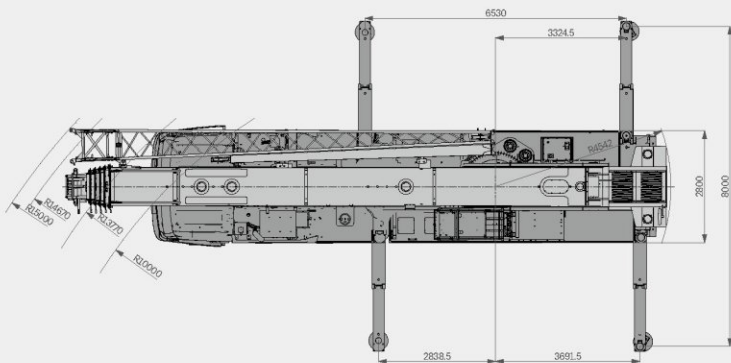
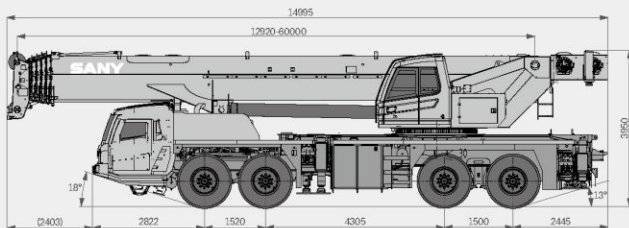
全新立體 7 通道空調送風系統，空間按鈕前置，操作方便，體感舒適。

採用全新薄膜開關按鈕，面板位置設計最優人機角度，操作零無需的移動；設置手機支架，水杯架，後置置物平臺，取用更便捷。

底盤兩側設置 300mm 加寬腳梯，上車配置檢修樓梯。

# Overall Dimensions

整機尺寸



# Technical Specification

## 整機參數

CATEGORY 類型	ITEM 項目	UNIT 單位	VALUE 參數	
CAPACITY 額定起重量	Max. lifting capacity 最大起重量	t	120	
WEIGHT 重量參數	Gross weight 整機總質量	t	48	
POWER 發動機參數	Engine model 發動機型號 (排放標準)	-	DF Cummins ISLe375 30 (Euro III) 康明斯 ISLe375 30 (歐 III)	
	Max. engine power 發動機最大功率	kW/rpm	275/2100	
	Max. engine torque 發動機最大輸出扭矩	N·m/rpm	1550/1200	
DIMENSIONS 尺寸參數	Overall length 整機全長	mm	14995	
	Overall width 整機全寬	mm	2800	
	Overall height 整機全高	mm	3950	
TRAVEL 行駛參數	Max. travel speed 最高行駛速度	km/h	80	
	Steering radius 轉彎半徑	Min. steering radius 最小轉彎半徑	m	10
		Min. steering radius of boom tip 臂頭最小轉彎半徑	m	15
	Wheel formula 車輛模式	-	8 × 4	
	Min. ground clearance 最小離地間隙	mm	430	
	Approach angle 接近角	°	18	
	Departure angle 離去角	°	13	
	Max. gradeability 最大爬坡率	-	45%	
	Fuel consumption per 100km 每 100 公裏油耗	L	45	
	Working temperature range 使用溫度區間	°C	-25~+45	
MAIN PERFORMANCE 主要性能參數	Min. rated lifting radius 最小額定幅度	m	2.5	
	Tail slewing radius 轉臺尾部回轉半徑	mm	4542	
	Boom sections (Qty) 臂節數	-	6	
	Boom shape 臂形狀	-	Oval shape 橢圓型	
	Max. lifting moment 最大起重力矩	Basic boom 基本臂	kN·m	3557.4
		Full-extension boom 全伸主臂	kN·m	2293.2
		Full-extension boom + jib 全伸主臂 + 副臂	kN·m	987.8
		Full-extension boom + boom extension + jib 全伸主臂 + 延伸臂 + 副臂	kN·m	909.4
	Boom length 臂長	Basic boom 基本臂	m	12.9
		Full-extension boom 全伸主臂	m	60
		Full-extension boom + jib 全伸主臂 + 副臂	m	77.5
		Full-extension boom + boom extension + jib 全伸主臂 + 延伸臂 + 副臂	m	87
	Max. lifting height 最大起重高度	Basic boom 基本臂	m	13.4
Full-extension boom 全伸主臂		m	60.5	
Full-extension boom + jib 全伸主臂 + 副臂		m	77.5	
Full-extension boom + boom extension + jib 全伸主臂 + 延伸臂 + 副臂		m	87	
Outrigger span (Longitudinal × Transverse) 支腿跨距 (縱 × 橫)	m	8 × 6.53		
Jib offset 副臂安裝角度	°	0, 20, 40		
AIRCONDITIONER 空調	In operator's cab 上車空調	-	Cooling and heating 冷暖空調	
	In driver's cab 下車空調	-	Cooling and heating 冷暖空調	

# Technical Specification

## 整機參數



### Axle Load 軸荷

Unit 單位: kg

Status 狀態	1	2	3	4	Gross weight 總重量
Design 設計狀態 Excluding counterweight, spare wheel, aux. winch, jib. The main hook is placed in front of the driver's cab. 不帶配重 / 備胎 / 副卷揚 / 副臂, 主鉤前置	12000	12000	12000	12000	48000
Shipping 發運狀態 Excluding counterweight, the main hook tied on the frame tail. 不帶配重, 主鉤後置	10900	10900	13400	13400	49600



### Hook 吊鉤

Rated load 額載 / t	Number of sheaves 滑輪數量	Rope rate 倍率	Hook weight/kg 吊鉤重量
60 (double eye 雙眼) ●	5	10	600
8 ●	0	1	210
20 ●	1	2	350
75 (double eye 雙眼) ○	5	10	735
90 ○	6	12	830
100 (with additional device 需額外裝置) ○	7	14	1030
120 (with additional device 需額外裝置) ○	9	18	1210

● Standard 標配 ○ Optional 選配

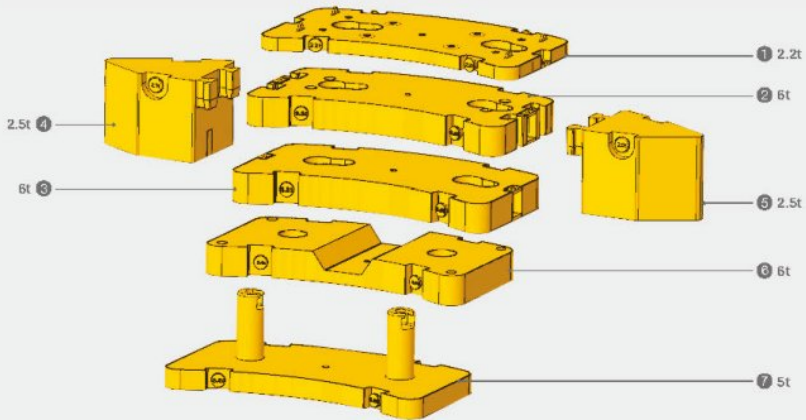


### Operations 主要動作參數

Item 項目	Max. single rope lifting speed (empty load) 單繩速度 (空載)	Rope diameter/length 鋼絲繩直徑 / 長度	Max. single line pull 最大單繩拉力
Main winch 主卷揚	130m/min	20mm/275m	8.34t
Auxiliary winch 副卷揚	130m/min	20mm/185m	8.34t
Slewing speed 回轉速度		1.7/min	
Full luffing up/down time of boom 主臂起落幅時鐘		65s/90s	
Full extension/retraction time of boom 主臂伸縮時鐘		480s/460s	
Outrigger jack 垂直支腿	Extension 伸	35s	
	Retraction 縮	35s	
Outrigger beam 水平支腿	Extension 伸	25s	
	Retraction 縮	20s	

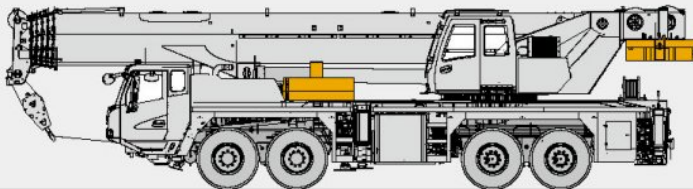
# Transport Dimensions

運輸尺寸



Total weight (t) 總重量	Combinations 組合
2.2	①
7.2	① + ⑦
8.2	① + ②
13.2	① + ⑥ + ⑦
19.2	① + ② + ⑥ + ⑦
25.2	① + ② + ③ + ⑥ + ⑦
30.2	① + ② + ③ + ④ + ⑤ + ⑥ + ⑦

## Transport Solution 運輸方案



**2.2t+6t+5t+6t=19.2t**

# Crane Introduction

## 整機介紹

### Driver's cab 駕駛室

- Self-developed full width cab in ergonomic design, featuring vibration and external noise isolation.
- Equipped with pneumatic suspension seats with headrest, safety belt, adjustable steering wheel, large rear-view mirror, defroster, HVAC, stereo radio, and full set of instrument and controls, realizing safety and comfort.
- 自主開發全寬向整體式鋼結構駕駛室，採用人體工程學原理設計，減震性和舒適性優良。
- 配備氣動懸置的駕駛座與副駕駛座、三點安全帶、可調節式的轉向盤、大視野後視鏡，配有頭枕的舒適駕駛椅、防霧燈、冷暖空調、立體收音機等，控制儀器和儀表齊全，更加舒適、安全、人性化。

### Carrier frame 車架

- Designed and manufactured by Sany, the torsion resistant box-type structure is welded by fine grain high-strength steel, featuring increased bearing capacity.
- 三一設計、製造，由細晶粒高強鋼板焊接而成的防扭轉箱形結構，承載能力強。

### Engine 發動機

- Model: Cummins inline six-cylinder diesel engine with watercooler and inter-cooler.
- Emission standard: Euro III.
- Fuel reservoir capacity: 450L.
- 型式：康明斯，直列六缸、水冷卻、增壓中冷、柴油發動機。
- 排放標準：歐三。
- 燃料箱有效容積：450L。

### Transmission 變速箱

- Manual transmission, 10 forward gears, 2 reversing gears, large speed ratio range, adaptable to slope climbing and high-speed traveling.
- 手動變速箱，變速箱有 10 個前進檔、2 個後退檔，速比範圍大，既可滿足低速場地爬坡行駛又可滿足高速行駛。

### Transmission shaft 傳動軸

- Optimized layout, higher torque output via contra-rotate gear connecting transmission shaft cardan.
- 優化的傳動軸布置，傳動軸傳動平穩、可靠，最佳化力傳輸，採用端面齒聯結傳動軸，傳遞扭矩大。

### Axle 車橋

- All-wheel steering with built-in differential lock, realizing tougher ability to rough-terrain travelling. Two-stage reducer gear and more compact axle bags contribute to better accessibility. Press-welding axle housing technology, bearing capacity is stronger.
- 1、2、3、4 車橋為全輪轉向車橋，驅動軸內置軸間和輪間差速器鎖，使車輛有更強的脫困能力；雙級減速，橫包體積更小，使車輛有更好的通過性；沖壓焊接工藝，承載能力更強。

### Suspension system 懸掛

- Front suspension is realized by independent leaf spring, and rear oscillation leaf spring. The leaf spring is verified by 100,000 cycling fatigue tests to ensure strength and ride comfort.
- 前輪採用獨立式鋼板彈簧，中後輪採用擺動支架式鋼板彈簧平衡懸架系統，板簧經過超過 10 萬次的疲勞試驗，同時優化前後板簧的性能參數，保證強度的同時兼顧乘坐的舒適性。

### Steering 轉向系統

- All axles are steered mechanically with hydraulic power assisted system with large flow gearbox and hydraulic booster. Steering resistance decreased and operation made easier.
- 1 軸 + 2 軸 + 3 軸 + 4 軸採用液壓動力機械轉向，採用大流量轉向器 + 轉向助力油缸，大大減小轉向阻力，轉向更輕便。

### Tires 輪胎

- Radial tires sized 385/95R25, commonly used for heavy-duty trucks.
- 子午線輪胎，385/95R25，廣泛應用的重型汽車，適用性強。

### Wheel formula 車輪模式

- 8 × 4 × 8.

### Outrigger 支腳

- H-type layout, four point support with high strength steel plate, easy to operate, outrigger beam hydraulically telescoping, jack telescoping protected by two-way holding valve.
- H 型支腿 4 點支撐，易操作，穩定性強；採用細晶粒高強度鋼板材料，一、二級支腿全液壓橫向伸縮。蓄力油缸採用雙向液壓鎖進行安全保護。

### Brake 製動系統

- The braking system includes service brake & parking brake & emergency brake & assisting brake.
- Service brake: air servo, dual circuit, front axle adopts drum brake, delivering stronger braking performance.
- Parking brake: functioning at axles 3 and 4 by spring-loaded air chamber.
- Emergency brake: performed by accumulator releasing pressure.
- Assisting brake: engine exhaust brake, safety assured when driving down long slopes.
- 製動系統包括行車製動、駐車製動、應急製動和輔助製動。
- 行車製動採用雙回路製動系統，所有車輪均用空氣伺服製動器，前橋採用鼓式製動器，制動能力更強。
- 駐車製動採用過氣室彈簧作用在第三、四橋上。
- 應急製動採用蓄能器儲能斷氣制動器做應急製動。
- 輔助製動為非氣製動，保證在下長坡時的製動安全，保證行車的安全可靠。

### Electrical system 電氣系統

- 2\*12V maintenance-free battery with a mechanical power switch, the overall power can be cut off manually. CAN instrument, data integration between superstructure and chassis.
- 2 × 12V 免維護蓄電池，配有機械式電源總開關，可手動切斷整車電源；總線控制系統，可實現上下車信息交互。

# Crane Introduction

## 整機介紹

### Operator's cab 操縱室

- It adopts pressed and welded construction, equipped with safety glass, sun shade, sliding-type door, joystick mounted on the control box in line with the principle of man-machine engineering. Corrosion-resistant FRP reinforced structure, fully covered softened interior, panoramic skylight, operator seat back tiltable and other use-friendly design, making it comfortable and easy to operate. Touch screen of adjustable angle realizes multi-screen & multi-angle monitoring to ensure working safety and the one-click operation. The main control console is combined with the operation display system for convenient man-machine interaction. Cab 20° tiltable, designed for easy observation of load at heights. Cooling & heating A/C available.
- 採用沖壓成型的全焊屋結構，裝有安全玻璃，車窗裝有遮陽簾，滑移式車門，操縱桿安裝在操縱箱上，符合人機工程原理；防腐玻璃鋼強化複合結構，全覆蓋軟化內飾，全景式天窗，操作手座椅靠背可傾斜定位等人性化設計，操作舒適、輕鬆；觸摸式顯示屏，視角可調節，多畫面、多角度監控保證作業安全，滿足一體化操作；主控臺與操作顯示系統有機結合，人機交互方便快捷。操縱室可向上傾斜 20°，滿足高處的作業觀察需要，配備冷暖空調。

### Boom & telescoping system 伸縮系統

- Single cylinder pin telescoping with electro hydraulic control, functioning automatic telescoping.
- Using multi-level pressure control, a number of telescopic balance valve cores, mechanic and hydraulic interlock of cylinder pins and boom pins, to ensure safe and reliable functioning.
- Oval six-section boom with high strength steel plate. Basic boom length 12.9m.
- 採用單缸插銷技術，通過電液控制系統實現缸銷、臂銷的插拔動作，配置自動伸縮功能。
- 採用多級壓力控制，多個伸縮平衡閥芯，缸銷臂銷的機械液壓的雙重互鎖機構，保證了伸縮系統安全可靠的工作。
- 6節臂，由高強度焊結構鋼製成，卵型。基本臂長 12.9m。

### Hoist 起升系統

- Efficient and energy saving speed regulation is realized by double variables of pump and motor. Winch balance valve coupled with exclusive anti-slip tech contribute to smoother hoisting.
- Normally closed type winch brake and winch balance valve are set to prevent hook falling and stalling.
- 泵、馬達雙變量調速，高效節能。卷揚平衡閥與獨特的防溜鉤技術完美結合，重物起落平穩。
- 常閉式卷揚制動器，並設置卷揚平衡閥，可防止落鉤失速。

### Luffing system 變幅系統

- Passive luffing down with balance system, reducing energy cost yet raising stability. Adopting single cylinder and front hinge, it saves more effort in luffing and improves the situation of load of boom, and also uses electric proportional control balance valve. Luffing angle: -1°~80°.
- 自重落幅，更加節能。採用單根油缸，前欽支布置，變幅更省力且起重重量力得到改善。採用電比例控制平衡閥。變幅角度：-1°~80°。

### Hydraulics 液壓系統

- High quality oil pump, motor, valve and other key hydraulic components, to ensure the stability and reliability of the hydraulic system.
- The luffing and telescopic system adopts an open system with four levels of pressure selection, different actions applying different pressure levels, so as to achieve energy saving and safe control of luffing and telescoping. Luffing mechanism adopts passive lowering, which is more energy saving.
- Hoist winch system adopts closed system to avoid throttling loss, delivering higher efficiency.
- 採用高品質的油泵、馬達、閥等關鍵液壓元件，保證液壓系統穩定、可靠。
- 變幅伸縮系統採用開式系統，具有四級壓力選擇功能，不同動作採用不同的壓力等級，從而實現節能。安全的控制變幅和伸縮動作，變幅機構採用自重落幅，更加節能。
- 起升卷揚系統採用閉式系統，避免卸流損失，使系統具有較高的效率。

### Slewing 回轉系統

- Integrated slewing buffer valve with free swing function. Smooth slewing start & control with excellent inching performance.
- 帶集成回轉緩沖閥，具有自由滑轉功能，回轉啟動和控制平穩，微動性卓越。

# Crane Introduction

## 整機介紹

### Control system 控制系統

- Vehicle data display system: equipped with multiple sensors to give timely feedback of data information, achieving real-time monitoring of the vehicle working state.
- Man-machine interaction interface: more user-friendly interface with rich and clear information. Customers can set the vehicle controllability according to their personal operation habits and different operating conditions to fully meet the preferred needs of customers.
- 整車數據顯示系統：配置豐富的傳感器，及時反饋數據信息，實現實時監控，確保隨時掌控整車工作狀態。
- 人機交互界面：人機交互界面設計人性化，信息豐富而清晰，客戶可根據個人操作習慣和不同使用條件自行設置整車操控性，充分滿足客戶的個性化需求。

### Counterweight 配重

- Movable counterweight features combinations: 0t, 2.2t, 7.2t, 8.2t, 13.2t, 19.2t, 25.2t, 30.2t. CW assembly and disassembly controlled by remote device.
- 組合式可變平衡重。0t、2.2t、7.2t、8.2t、13.2t、19.2t、25.2t、30.2t 共 8 種組合方式，詳見附件組合表。可滿足不同工況的需求，最大限度發揮結構性能，可遠程拆卸及安裝，靈活性好。

### Safety equipment 安全裝置

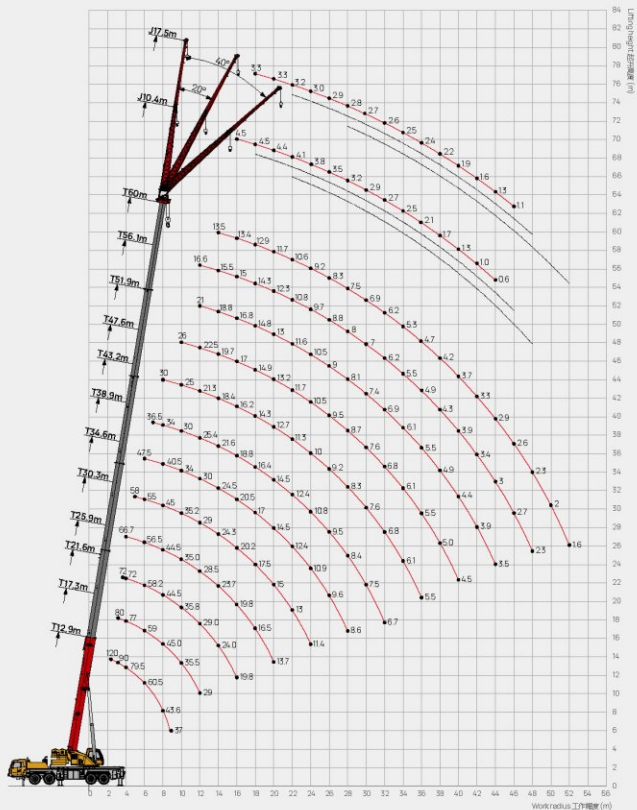
- Load moment indicator: A method of analytical mechanics is adopted and a moment limiter calculation system based on the hoisting mechanics model is established. Through online empty-load calibration, the rated hoisting accuracy can reach  $\pm 3\%$  to fully protect the hoisting operation.
- The hydraulic system is equipped with balance valve, relief valve, two-way holding valve, etc. to realize stability and reliability.
- Boom head and jib head are equipped with AZB switch to prevent the wire rope from overwinding.
- The boom head is equipped with an anemometer to detect whether the wind speed at heights exceeds the allowable range.
- The length & angle sensor and pressure sensor are equipped to display the operating status of the crane in real time, automatically cut off dangerous actions, and give a buzzer alarm.
- 採用分析力學方法，建立了基於吊重力學模型的力矩限制器計算系統，通過在線空載標定，吊重精度達到  $\pm 3\%$ 。
- 液壓系統配置液壓平衡閥、溢流閥、雙向液壓鎖等元件，實現液壓系統穩定可靠。
- 主、副臂臂端配置高度限位器，防止鋼絲繩過卷。
- 臂端裝有風速儀，檢測高空風速是否超過可作業允許範圍。
- 配置長度角度傳感器、壓力傳感器，實時顯示起重機作業狀態，自動切斷危險動作。

### Optional equipment at extra fees 選配

- 75 & 90t & 100t & 120t hook, 9.5m boom extension.
- Customized painting.
- Other equipment available upon request.
- 75t、90t、100t、120t 吊鉤，9.5m 延伸臂。
- 特殊塗裝。
- 其他配置視需求定。

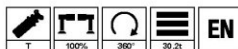
# Operating Range - Telescopic Boom

起升高度曲線 - 主臂



# Load Chart-Telescopic Boom

## 性能表 - 主臂



Unit:t

	12.9	17.3	21.6	25.9	30.3	34.6	38.9	43.2	47.6	51.9	56.1	60.0	
2.5	120.0*												2.5
3.0	90.0	80.0											3.0
3.5	86.0	80.0	72.0										3.5
4.0	79.5	77.0	72.0	66.7									4.0
4.5	74.0	71.8	69.0	65.0									4.5
5.0	69.0	67.0	65.3	64.0	58.0								5.0
5.5	64.5	62.5	61.5	60.0	57.5								5.5
6.0	60.5	59.0	58.2	56.5	55.0	47.5							6.0
6.5	55.2	54.8	54.3	53.5	52.5	46.0							6.5
7.0	50.0	51.1	50.5	50.1	50.2	44.0	36.5						7.0
7.5	46.6	47.8	47.3	47.0	47.2	42.5	34.5						7.5
8.0	43.6	45.0	44.5	44.5	45.0	40.5	34.0	30.0					8.0
9.0	37.0	40.0	40.0	39.1	40.0	37.0	33.0	27.3					9.0
10.0		35.5	35.8	35.0	35.2	34.0	30.0	25.0	26.0				10.0
12.0		29.0	29.0	28.5	29.0	30.0	25.4	21.3	22.5	21.0	16.6		12.0
14.0			24.0	23.7	24.3	24.5	21.6	18.4	19.7	18.8	15.5	13.5	14.0
16.0			19.8	19.8	20.2	20.5	18.8	16.2	17.0	16.8	15.0	13.4	16.0
18.0				16.5	17.5	17.0	16.4	14.3	14.9	14.8	14.3	12.9	18.0
20.0				13.7	15.0	14.5	14.5	12.7	13.2	13.0	12.3	11.7	20.0
22.0					13.0	12.4	12.4	11.3	11.7	11.6	10.8	10.6	22.0
24.0					11.4	10.9	10.8	10.0	10.5	10.5	9.7	9.2	24.0
26.0						9.6	9.5	9.2	9.5	9.0	8.8	8.3	26.0
28.0						8.6	8.4	8.3	8.7	8.1	8.0	7.5	28.0
30.0							7.5	7.6	7.6	7.4	7.0	6.9	30.0
32.0							6.7	6.8	6.8	6.9	6.2	6.2	32.0
34.0								6.1	6.1	6.1	5.5	5.3	34.0
36.0								5.5	5.5	5.5	4.9	4.7	36.0
38.0									5.0	4.9	4.3	4.2	38.0
40.0									4.5	4.4	3.9	3.7	40.0
42.0										3.9	3.4	3.3	42.0
44.0											3.5	2.9	44.0
46.0												2.7	46.0
48.0												2.3	48.0
50.0													50.0
52.0													52.0
	16	10	9	8	7	6	5	4	4	3	3	3	

\*正機方吊載，須增加輔助滑輪。

## Load Chart-Telescopic Boom

性能表 - 主臂



Unit:t

	12.9	17.3	21.6	25.9	30.3	34.6	38.9	43.2	47.6	51.9	56.1	60.0	
2.5	120.0*												2.5
3.0	90.0	80.0											3.0
3.5	85.5	80.0	72.0										3.5
4.0	79.5	77.0	71.0	66.7									4.0
4.5	74.0	71.5	68.0	65.0									4.5
5.0	69.0	66.5	65.2	64.0	58.0								5.0
5.5	64.0	61.5	61.5	60.0	57.5								5.5
6.0	59.5	57.5	57.0	56.5	55.0	47.5							6.0
6.5	54.5	53.3	53.3	53.5	52.5	46.0							6.5
7.0	49.5	49.6	49.8	49.8	50.2	44.0	36.5						7.0
7.5	46.0	46.5	46.3	46.6	47.2	42.5	34.0						7.5
8.0	43.0	43.7	43.5	43.5	44.2	40.5	33.5	30.0					8.0
9.0	36.5	38.3	38.5	38.2	38.8	37.0	32.6	27.1					9.0
10.0		33.8	34.0	33.8	34.5	34.0	29.7	24.9	26.0				10.0
12.0		27.5	27.2	27.2	27.9	28.5	25.0	21.0	21.5	20.0	16.6		12.0
14.0			22.5	21.8	23.0	22.5	21.3	18.1	18.8	18.0	15.5	13.5	14.0
16.0			19.0	17.6	19.2	18.2	18.0	16.0	16.2	14.9	13.8	12.5	16.0
18.0				14.5	16.0	16.1	15.0	13.8	14.3	13.1	11.5	11.3	18.0
20.0				12.6	13.6	13.8	12.8	11.7	12.3	11.5	9.7	9.5	20.0
22.0					11.6	11.9	11.0	10.5	10.5	9.9	8.3	8.0	22.0
24.0					10.1	10.4	9.6	9.5	9.2	8.6	7.2	6.9	24.0
26.0						9.2	8.4	8.4	8.1	7.5	6.3	6.0	26.0
28.0						8.1	7.4	7.4	7.3	6.6	5.5	5.3	28.0
30.0							6.6	6.6	6.5	5.9	4.9	4.6	30.0
32.0							6.0	5.9	5.8	5.2	4.3	4.1	32.0
34.0								5.3	5.2	4.7	3.8	3.6	34.0
36.0								4.8	4.7	4.2	3.3	3.2	36.0
38.0									4.2	3.8	2.9	2.8	38.0
40.0									3.8	3.4	2.6	2.5	40.0
42.0										3.0	2.3	2.2	42.0
44.0											2.7	2.0	44.0
46.0												1.8	46.0
48.0												1.6	48.0
50.0													50.0
52.0													52.0
	16	10	9	8	7	6	5	4	4	3	3	3	

\*正後方可載，須增加輔助支撐。

# Load Chart-Telescopic Boom

## 性能表 - 主臂



Unit:t

	12.9	17.3	21.6	25.9	30.3	34.6	38.9	43.2	47.6	51.9	56.1	60.0	
2.5	120.0*												2.5
3.0	90.0	80.0											3.0
3.5	85.5	80.0	72.0										3.5
4.0	79.0	77.0	71.0	66.7									4.0
4.5	73.5	71.5	68.0	65.0									4.5
5.0	68.5	66.5	65.2	64.0	58.0								5.0
5.5	62.5	61.5	61.5	60.0	57.5								5.5
6.0	57.0	56.8	56.8	56.5	55.0	47.5							6.0
6.5	52.0	52.5	52.8	52.3	52.5	46.0							6.5
7.0	48.0	48.5	48.5	48.0	48.5	44.0	36.5						7.0
7.5	44.3	45.0	45.0	44.5	45.0	42.5	34.0						7.5
8.0	41.2	42.0	41.8	41.5	42.0	40.5	33.5	30.0					8.0
9.0	36.0	36.8	36.5	36.0	36.5	37.0	32.6	27.1					9.0
10.0		32.5	32.5	31.8	32.8	33.0	29.7	24.9	26.0				10.0
12.0		26.0	26.5	25.5	27.5	26.0	25.0	21.0	21.5	20.0	16.6		12.0
14.0			20.6	19.2	21.0	20.0	20.1	18.1	18.8	16.4	15.5	13.5	14.0
16.0			16.5	16.6	16.6	17.0	16.1	14.8	15.7	14.7	13.2	12.0	16.0
18.0				14.0	13.7	13.9	13.2	12.6	13.0	12.2	11.0	9.9	18.0
20.0				11.9	11.5	11.6	11.3	11.1	10.9	10.2	9.2	8.4	20.0
22.0					9.8	9.9	10.1	9.4	9.4	8.6	7.7	7.2	22.0
24.0					8.3	8.6	8.7	8.1	8.0	7.4	6.5	6.2	24.0
26.0						7.5	7.6	7.2	7.0	6.4	5.6	5.4	26.0
28.0						6.6	6.7	6.5	6.1	5.6	4.8	4.8	28.0
30.0							5.9	5.7	5.3	4.8	4.2	4.1	30.0
32.0							5.3	5.0	4.7	4.2	3.6	3.6	32.0
34.0								4.5	4.1	3.7	3.1	3.1	34.0
36.0								4.0	3.6	3.2	2.7	2.7	36.0
38.0									3.2	2.8	2.3	2.3	38.0
40.0									2.8	2.5	2.0	2.0	40.0
42.0										2.2	1.7	1.7	42.0
44.0											1.8	1.4	44.0
46.0													46.0
48.0													48.0
50.0													50.0
52.0													52.0
	16	10	9	8	7	6	5	4	4	3	3	3	

\*正後方吊載，須增加輔助滑輪。

## Load Chart-Telescopic Boom

## 性能表 - 主臂



Unit:t

	12.9	17.3	21.6	25.9	30.3	34.6	38.9	43.2	47.6	51.9	56.1	60.0	
2.5	120.0*												2.5
3.0	90.0	80.0											3.0
3.5	85.5	80.0	72.0										3.5
4.0	79.0	77.0	71.0	66.7									4.0
4.5	73.5	71.5	68.0	65.0									4.5
5.0	66.0	66.0	65.2	64.0	58.0								5.0
5.5	59.5	60.5	60.0	59.5	57.5								5.5
6.0	54.0	55.0	54.7	54.5	55.0	47.5							6.0
6.5	49.5	50.5	50.5	49.8	50.5	46.0							6.5
7.0	45.5	46.5	46.2	45.7	46.5	44.0	36.5						7.0
7.5	42.0	43.0	43.0	42.5	43.0	42.5	34.0						7.5
8.0	39.0	40.0	40.2	39.5	40.2	40.5	33.5	30.0					8.0
9.0	34.0	35.0	35.5	34.5	36.2	35.5	32.6	27.1					9.0
10.0		30.8	31.3	29.6	31.5	29.5	29.0	24.9	26.0				10.0
12.0		22.3	23.0	22.6	22.5	22.0	20.9	19.0	19.8	18.2	16.6		12.0
14.0			17.5	18.0	17.2	17.5	16.4	15.8	15.2	14.8	14.1	13.5	14.0
16.0			14.3	14.4	13.7	13.9	13.9	12.5	12.2	11.8	11.2	11.2	16.0
18.0				11.7	11.1	11.4	11.5	10.7	10.0	9.7	9.1	9.1	18.0
20.0				9.7	9.3	9.5	9.6	9.1	8.4	8.1	7.5	7.5	20.0
22.0					7.8	8.0	8.1	7.8	7.1	6.9	6.3	6.3	22.0
24.0					6.6	6.9	7.0	6.7	6.0	5.9	5.3	5.3	24.0
26.0						5.9	6.0	5.8	5.1	5.0	4.5	4.5	26.0
28.0							5.1	5.2	5.0	4.4	4.2	3.8	28.0
30.0								4.6	4.3	3.8	3.6	3.2	30.0
32.0								4.0	3.8	3.3	3.1	2.7	32.0
34.0									3.3	2.8	2.7	2.3	34.0
36.0									2.9	2.4	2.3	1.9	36.0
38.0										2.1	1.9	1.5	38.0
40.0										1.8	1.5		40.0
42.0													42.0
44.0													44.0
46.0													46.0
48.0													48.0
50.0													50.0
52.0													52.0
	16	10	9	8	7	6	5	4	4	3	3	3	

\*正後方吊載，須增加輔助滑輪。

# Load Chart-Telescopic Boom

## 性能表 - 主臂



Unit:t

	12.9	17.3	21.6	25.9	30.3	34.6	38.9	43.2	47.6	51.9	56.1	60.0	
2.5	120.0*												2.5
3.0	90.0	80.0											3.0
3.5	85.5	80.0	72.0										3.5
4.0	79.0	77.0	71.0	66.7									4.0
4.5	70.5	71.0	68.0	65.0									4.5
5.0	63.0	63.8	63.5	63.3	58.0								5.0
5.5	57.0	57.8	57.5	57.3	57.5								5.5
6.0	51.5	52.5	53.0	52.1	52.5	47.5							6.0
6.5	47.0	48.2	49.0	47.5	48.3	46.0							6.5
7.0	43.5	44.5	45.0	43.7	45.0	44.0	36.5						7.0
7.5	40.0	41.2	42.0	40.5	42.3	42.0	34.0						7.5
8.0	37.2	38.2	39.0	37.7	39.5	38.5	33.5	30.0					8.0
9.0	31.4	32.4	33.7	31.0	32.5	29.8	30.0	27.1					9.0
10.0		26.7	27.6	27.6	26.5	25.0	24.5	22.3	22.8				10.0
12.0		19.3	20.3	20.0	18.8	19.0	18.6	16.6	16.6	16.2	15.5		12.0
14.0			15.4	15.3	14.2	14.5	14.2	13.2	12.7	12.3	11.8	11.7	14.0
16.0			12.0	12.0	11.3	11.5	11.3	10.5	10.1	9.7	9.3	9.2	16.0
18.0				9.7	9.1	9.3	9.2	8.6	8.2	7.9	7.4	7.4	18.0
20.0				7.9	7.5	7.7	7.6	7.1	6.7	6.5	6.1	6.0	20.0
22.0					6.2	6.4	6.4	6.0	5.6	5.4	5.0	5.0	22.0
24.0					5.1	5.4	5.4	5.1	4.7	4.5	4.1	4.1	24.0
26.0						4.6	4.6	4.3	4.0	3.7	3.4	3.4	26.0
28.0							3.8	3.9	3.7	3.3	3.1	2.8	28.0
30.0								3.4	3.1	2.8	2.6	2.3	30.0
32.0								2.9	2.7	2.4	2.2	1.9	32.0
34.0									2.3	2.0	1.8	1.4	34.0
36.0									1.9	1.6	1.4		36.0
38.0													38.0
40.0													40.0
42.0													42.0
44.0													44.0
46.0													46.0
48.0													48.0
50.0													50.0
52.0													52.0
	16	10	9	8	7	6	5	4	4	3	3	3	

\*正視力移動、標準主臂出清後。

## Load Chart-Telescopic Boom

性能表 - 主臂



Unit:t

	12.9	17.3	21.6	25.9	30.3	34.6	38.9	43.2	47.6	51.9	56.1	60.0	
2.5	120.0*												2.5
3.0	90.0	80.0											3.0
3.5	85.5	80.0	72.0										3.5
4.0	79.0	77.0	71.0	66.7									4.0
4.5	69.5	70.0	68.0	65.0									4.5
5.0	62.5	63.5	63.0	62.6	58.0								5.0
5.5	56.5	57.3	57.0	56.6	57.2								5.5
6.0	51.0	52.0	52.5	51.5	52.2	47.5							6.0
6.5	46.8	47.8	48.3	47.3	47.8	46.0							6.5
7.0	43.0	44.0	44.5	43.5	45.0	44.0	36.5						7.0
7.5	39.5	40.7	41.2	40.2	41.8	41.5	34.0						7.5
8.0	37.0	37.8	38.2	37.2	39.0	38.5	33.5	30.0					8.0
9.0	30.3	32.3	32.3	31.0	31.2	29.8	28.0	27.1					9.0
10.0		26.3	26.2	26.8	25.3	25.0	22.8	22.0	22.8				10.0
12.0		18.8	19.5	19.1	18.0	18.2	18.0	16.3	16.5	16.2	15.5		12.0
14.0			14.8	14.5	13.6	13.9	13.7	12.9	12.5	12.3	11.8	11.7	14.0
16.0			11.4	11.4	10.8	11.0	10.9	10.1	9.9	9.7	9.3	9.2	16.0
18.0				9.2	8.7	8.9	8.8	8.2	8.0	7.9	7.4	7.4	18.0
20.0				7.5	7.1	7.3	7.3	6.8	6.5	6.5	6.0	6.0	20.0
22.0					5.8	6.1	6.1	5.7	5.4	5.4	4.9	4.9	22.0
24.0					4.8	5.1	5.2	4.8	4.5	4.5	4.0	4.0	24.0
26.0						4.3	4.4	4.0	3.7	3.7	3.3	3.3	26.0
28.0							3.6	3.8	3.4	3.1	2.7	2.7	28.0
30.0								3.2	2.9	2.6	2.2	2.2	30.0
32.0								2.6	2.5	2.2	2.1	1.7	32.0
34.0									2.1	1.8	1.6		34.0
36.0									1.7	1.4			36.0
38.0													38.0
40.0													40.0
42.0													42.0
44.0													44.0
46.0													46.0
48.0													48.0
50.0													50.0
52.0													52.0
	16	10	9	8	7	6	5	4	4	3	3	2	

\*正後方吊載、吊臂加輔助滑輪。

# Load Chart-Telescopic Boom

## 性能表 - 主臂



Unit:t

	12.9	17.3	21.6	25.9	30.3	34.6	38.9	43.2	47.6	51.9	56.1	60.0	
2.5	120.0*												2.5
3.0	90.0	80.0											3.0
3.5	85.5	80.0	72.0										3.5
4.0	75.5	75.5	71.0	66.7									4.0
4.5	67.0	67.8	67.0	65.0									4.5
5.0	59.5	60.5	60.5	62.6	58.0								5.0
5.5	54.0	54.8	54.8	56.6	57.0								5.5
6.0	49.0	49.8	50.0	49.2	49.7	47.5							6.0
6.5	44.5	45.6	46.1	45.0	46.8	46.0							6.5
7.0	41.0	42.0	42.4	40.7	43.2	38.6	35.5						7.0
7.5	36.9	38.9	39.3	37.0	37.8	32.6	34.0						7.5
8.0	32.3	34.5	34.0	34.5	32.8	28.2	29.5	29.6					8.0
9.0	25.2	26.5	27.5	26.9	25.5	24.3	23.5	23.0					9.0
10.0		21.7	22.3	21.8	20.5	19.8	20.5	20.0	20.0				10.0
12.0		15.0	15.6	15.3	14.5	14.0	14.5	14.0	14.0	13.5	13.0		12.0
14.0			11.6	11.5	10.8	10.5	11.0	10.5	10.4	10.0	9.6	10.0	14.0
16.0			8.9	8.9	8.3	8.1	8.5	8.1	8.1	7.7	7.4	7.6	16.0
18.0				7.0	6.5	6.5	6.7	6.5	6.4	6.1	5.7	5.9	18.0
20.0				5.5	5.2	5.2	5.4	5.2	5.1	4.8	4.5	4.7	20.0
22.0					4.2	4.3	4.4	4.3	4.1	3.9	3.5	3.7	22.0
24.0					3.2	3.5	3.6	3.5	3.3	3.1	2.8	2.9	24.0
26.0						2.9	3.0	2.9	2.7	2.5	2.2	2.3	26.0
28.0						2.3	2.5	2.4	2.2	2.0	1.6	1.6	28.0
30.0							2.0	2.0	1.7	1.5			30.0
32.0							1.5	1.5					32.0
34.0													34.0
36.0													36.0
38.0													38.0
40.0													40.0
42.0													42.0
44.0													44.0
46.0													46.0
48.0													48.0
50.0													50.0
52.0													52.0
	16	10	9	8	7	6	5	4	4	2	2	2	

\*正後方吊載，原增加輔助滑輪。

## Load Chart-Telescopic Boom

性能表 - 主臂



Unit:t

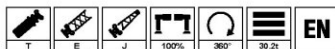
	12.9	17.3	21.6	25.9	30.3	34.6	38.9	43.2	47.6	51.9	56.1	60.0	
2.5	120.0*												2.5
3.0	90.0	80.0											3.0
3.5	85.0	80.0	72.0										3.5
4.0	74.0	74.5	71.0	66.7									4.0
4.5	65.5	66.5	66.2	65.0									4.5
5.0	58.5	59.5	60.0	59.1	58.0								5.0
5.5	52.5	53.5	54.2	53.3	53.8								5.5
6.0	48.0	49.0	49.2	48.3	49.0	47.5							6.0
6.5	43.8	44.8	45.2	44.0	46.0	45.5							6.5
7.0	40.2	41.2	41.6	39.5	40.5	38.4	35.5						7.0
7.5	35.1	35.6	35.3	35.6	34.5	32.4	32.6						7.5
8.0	30.0	30.8	31.2	30.8	30.0	28.2	28.2	27.0					8.0
9.0	22.8	24.3	24.9	23.9	23.2	22.0	22.3	21.5					9.0
10.0		19.5	20.1	19.4	18.8	18.0	17.8	17.7					10.0
12.0		13.3	14.0	13.8	13.1	12.5	12.7	12.6	12.5	12.0	12.0		12.0
14.0			10.3	10.2	9.7	9.2	9.5	9.5	9.3	9.1	8.8	8.8	14.0
16.0			7.8	7.8	7.4	7.1	7.3	7.3	7.2	7.0	6.7	6.7	16.0
18.0				6.1	5.7	5.6	5.8	5.8	5.7	5.4	5.2	5.2	18.0
20.0				4.7	4.5	4.5	4.7	4.7	4.5	4.3	4.0	4.1	20.0
22.0					3.5	3.6	3.8	3.8	3.6	3.4	3.1	3.1	22.0
24.0					2.6	2.9	3.1	3.1	2.9	2.7	2.4	2.4	24.0
26.0						2.3	2.5	2.5	2.3	2.1	1.7	1.7	26.0
28.0							1.8	2.0	2.0	1.8	1.5		28.0
30.0								1.5	1.5				30.0
32.0													32.0
34.0													34.0
36.0													36.0
38.0													38.0
40.0													40.0
42.0													42.0
44.0													44.0
46.0													46.0
48.0													48.0
50.0													50.0
52.0													52.0
	16	10	9	8	7	6	5	4	4	2	2	2	

\*正後方吊載，需增加輔助吊輪。



## Load Chart - Fixed Jib

性能表 - 副臂

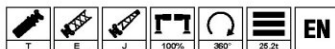


Unit:t

Unit:t	12.9m*10.4m			43.2m*10.4m			47.6m*10.4m			51.9m*10.4m			56.1m*10.4m			60m*10.4m			Unit:t
	0°	20°	40°	0°	20°	40°	0°	20°	40°	0°	20°	40°	0°	20°	40°	0°	20°	40°	
3.0	14.8																		3.0
3.5	14.6																		3.5
4.0	14.4																		4.0
4.5	14.2																		4.5
5.0	14.0																		5.0
6.0	13.8	8.8																	6.0
7.0	12.7	8.0																	7.0
8.0	11.0	7.3																	8.0
9.0	9.4	6.8	5.8																9.0
10.0	8.0	6.1	5.5																10.0
11.0	7.2	5.6	5.2	14.8															11.0
12.0	6.6	5.3	4.9	14.0			12.5												12.0
14.0	5.6	4.7	4.5	13.1	7.7		11.8		10.1			6.2							14.0
16.0		4.2	4.1	12.1	7.3	5.3	11.1	7.6		9.5		6.1			4.5				16.0
18.0				11.2	6.8	5.1	10.3	7.2	5.3	8.9	8.2	6.1	6.4		4.5	4.4			18.0
20.0				10.3	6.4	4.8	9.5	6.9	5.1	8.3	7.9	5.2	5.8	6.2	4.4	4.3			20.0
22.0				9.2	5.9	4.6	8.6	6.5	4.9	7.7	7.5	5.0	5.7	5.9	5.2	4.1	4.1	4.3	22.0
24.0				8.1	5.6	4.5	7.7	6.1	4.7	7.2	6.9	4.9	5.4	5.6	5.0	3.8	3.8	4.0	24.0
26.0				7.1	5.2	4.4	6.8	5.7	4.5	6.5	6.4	4.7	5.2	5.2	4.7	3.5	3.6	3.8	26.0
28.0				6.2	4.9	4.2	6.0	5.4	4.4	5.9	5.8	4.7	4.9	4.9	4.5	3.2	3.3	3.6	28.0
30.0				5.3	4.6	4.1	5.3	5.0	4.3	5.2	5.3	4.5	4.6	4.6	4.2	2.9	3.0	3.3	30.0
32.0				4.5	4.4	4.0	4.5	4.7	4.1	4.6	4.8	4.4	4.3	4.3	4.0	2.7	2.8	3.0	32.0
34.0				3.8	4.2	3.8	3.8	4.2	3.9	4.0	4.3	4.1	4.0	4.0	3.8	2.5	2.5	2.7	34.0
36.0					3.5	3.6	3.3	3.6	3.7	3.4	3.7	3.9	3.6	3.7	3.6	2.1	2.2	2.4	36.0
38.0						3.1	2.7	3.0	3.2	2.8	3.2	3.4	3.0	3.3	3.4	1.7	1.8	2.2	38.0
40.0								2.5	2.7	2.4	2.7	2.8	2.6	2.9	3.0	1.3	1.6	1.9	40.0
42.0									2.2		2.2	2.4	2.2	2.4	2.6	1.0	1.3	1.6	42.0
44.0											1.9		2.0	2.1	0.6	0.9	1.1	1.4	44.0
46.0														1.8		0.6	0.8	1.1	46.0
48.0																	0.5	0.7	48.0
50.0																			50.0
52.0																			52.0
54.0																			54.0
56.0																			56.0
	2	2	1	2	2	1	2	2	1	2	2	1	1	1	1	1	1	1	

# Load Chart - Fixed Jib

性能表 - 副臂

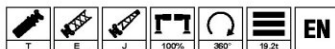


Unit:t

Jib EN	12.9m*10.4m			43.2m*10.4m			47.6m*10.4m			51.9m*10.4m			56.1m*10.4m			60m*10.4m			Jib EN
	0°	20°	40°	0°	20°	40°	0°	20°	40°	0°	20°	40°	0°	20°	40°	0°	20°	40°	
3.0	14.8																		3.0
3.5	14.6																		3.5
4.0	14.4																		4.0
4.5	14.2																		4.5
5.0	14.0																		5.0
6.0	13.8	8.8																	6.0
7.0	12.7	8.0																	7.0
8.0	11.0	7.3																	8.0
9.0	9.4	6.8	5.8																9.0
10.0	8.0	6.1	5.5																10.0
11.0	7.2	5.6	5.2	14.8															11.0
12.0	6.6	5.3	4.9	14.0			12.5												12.0
14.0	5.6	4.7	4.5	13.1	7.7		11.8			10.1			6.2						14.0
16.0		4.2	4.1	12.1	7.3	5.3	11.1	7.6		9.5			6.1			4.5			16.0
18.0				11.2	6.8	5.1	10.3	7.2	5.3	8.9	8.2		6.1	6.4		4.5	4.4		18.0
20.0				10.3	6.4	4.8	9.5	6.9	5.1	8.3	7.9	5.2	5.8	6.2		4.4	4.3		20.0
22.0				8.8	5.9	4.6	8.6	6.5	4.9	7.7	7.5	5.0	5.7	5.9	5.2	4.1	4.1	4.3	22.0
24.0				7.3	5.6	4.5	7.4	6.1	4.7	7.2	6.9	4.9	5.4	5.6	5.0	3.8	3.8	4.0	24.0
26.0				6.2	5.2	4.4	6.2	5.7	4.5	6.3	6.4	4.7	5.2	5.2	4.7	3.5	3.6	3.8	26.0
28.0				5.2	4.9	4.2	5.2	5.4	4.4	5.3	5.8	4.7	4.9	4.9	4.5	3.2	3.3	3.6	28.0
30.0				4.4	4.6	4.1	4.4	4.8	4.3	4.5	5.0	4.5	4.6	4.6	4.2	2.9	3.0	3.3	30.0
32.0				3.7	4.0	4.0	3.7	4.1	4.1	3.8	4.2	4.4	4.0	4.3	4.0	2.7	2.8	3.0	32.0
34.0				3.0	3.4	3.6	3.0	3.4	3.7	3.2	3.5	3.8	3.4	3.7	3.8	2.5	2.5	2.7	34.0
36.0					2.8	3.0	2.5	2.8	3.0	2.6	3.0	3.2	2.8	3.2	3.4	2.1	2.2	2.4	36.0
38.0						2.4	2.0	2.3	2.5	2.1	2.5	2.7	2.3	2.6	2.9	1.7	1.8	2.2	38.0
40.0								1.9	2.0	1.7	2.0	2.2	1.9	2.2	2.4	1.3	1.6	1.9	40.0
42.0									1.6		1.6	1.7	1.5	1.8	1.9	1.0	1.3	1.6	42.0
44.0												1.3		1.4	1.5	0.6	0.9	1.1	44.0
46.0															1.2		0.6	0.8	46.0
48.0																		0.5	48.0
50.0																			50.0
52.0																			52.0
54.0																			54.0
56.0																			56.0
<b>EN</b>	2	2	1	2	2	1	2	2	1	2	2	1	1	1	1	1	1	1	<b>EN</b>

## Load Chart - Fixed Jib

性能表 - 副臂

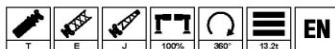


Unit:t

Jib 副臂	12.9m*10.4m			43.2m*10.4m			47.6m*10.4m			51.9m*10.4m			56.1m*10.4m			60m*10.4m			Jib 副臂
	0°	20°	40°	0°	20°	40°	0°	20°	40°	0°	20°	40°	0°	20°	40°	0°	20°	40°	
3.0	14.8																		3.0
3.5	14.6																		3.5
4.0	14.4																		4.0
4.5	14.2																		4.5
5.0	14.0																		5.0
6.0	13.8	8.8																	6.0
7.0	12.7	8.0																	7.0
8.0	11.0	7.3																	8.0
9.0	9.4	6.8	5.8																9.0
10.0	8.0	6.1	5.5																10.0
11.0	7.2	5.6	5.2	14.8															11.0
12.0	6.6	5.3	4.9	14.0			12.5												12.0
14.0	5.6	4.7	4.5	13.1	7.7		11.8			10.1			6.2						14.0
16.0		4.2	4.1	12.1	7.3	5.3	11.1	7.6		9.5			6.1			4.5			16.0
18.0				10.8	6.8	5.1	10.3	7.2	5.3	8.9	8.2		6.1	6.4		4.5	4.4		18.0
20.0				8.8	6.4	4.8	8.8	6.9	5.1	8.3	7.9	5.2	5.8	6.2		4.4	4.3		20.0
22.0				7.2	5.9	4.6	7.2	6.5	4.9	7.3	7.5	5.0	5.7	5.9	5.2	4.1	4.1	4.3	22.0
24.0				5.9	5.6	4.5	5.9	6.1	4.7	6.1	6.7	4.9	5.4	5.6	5.0	3.8	3.8	4.0	24.0
26.0				4.9	5.2	4.4	4.9	5.5	4.5	5.0	5.6	4.7	5.2	5.2	4.7	3.5	3.6	3.8	26.0
28.0				4.0	4.5	4.2	4.0	4.5	4.4	4.1	4.7	4.7	4.3	4.9	4.5	3.2	3.3	3.6	28.0
30.0				3.2	3.7	4.0	3.3	3.7	4.1	3.4	3.9	4.2	3.6	4.1	4.2	2.9	3.0	3.3	30.0
32.0				2.6	3.0	3.3	2.6	3.0	3.3	2.7	3.2	3.5	2.9	3.4	3.7	2.7	2.8	3.0	32.0
34.0				2.0	2.4	2.6	2.1	2.4	2.7	2.2	2.6	2.8	2.4	2.8	3.0	2.5	2.5	2.4	34.0
36.0					1.9	2.0	1.6	1.9	2.1	1.7	2.0	2.3	1.9	2.2	2.5	2.1	2.2	1.9	36.0
38.0						1.5	1.1	1.4	1.6	1.3	1.6	1.8	1.4	1.8	2.0	1.7	1.7	1.5	38.0
40.0								1.0	1.2	0.9	1.2	1.3	1.1	1.3	1.5	1.3	1.3	1.1	40.0
42.0									0.8		0.8	0.9	0.7	1.0	1.1	1.0	1.0	0.8	42.0
44.0												0.6		0.6	0.8	0.6	0.7	0.5	44.0
46.0															0.5				46.0
48.0																			48.0
50.0																			50.0
52.0																			52.0
54.0																			54.0
56.0																			56.0
2	2	1	2	2	1	2	2	1	2	2	1	1	1	1	1	1	1	1	2

# Load Chart - Fixed Jib

性能表 - 副臂



Unit:t

Jib 副臂	12.9m*10.4m			43.2m*10.4m			47.6m*10.4m			51.9m*10.4m			56.1m*10.4m			60m*10.4m			Jib 副臂
	0°	20°	40°	0°	20°	40°	0°	20°	40°	0°	20°	40°	0°	20°	40°	0°	20°	40°	
3.0	14.8																		3.0
3.5	14.6																		3.5
4.0	14.4																		4.0
4.5	14.2																		4.5
5.0	14.0																		5.0
6.0	13.8	8.8																	6.0
7.0	12.7	8.0																	7.0
8.0	11.0	7.3																	8.0
9.0	9.4	6.8	5.8																9.0
10.0	8.0	6.1	5.5																10.0
11.0	7.2	5.6	5.2	14.8															11.0
12.0	6.6	5.3	4.9	14.0			12.5												12.0
14.0	5.6	4.7	4.5	13.1	7.7		11.8		10.1			6.2							14.0
16.0		4.2	4.1	11.1	7.3	5.3	11.1	7.6		9.5		6.1			4.5				16.0
18.0				8.8	6.8	5.1	8.8	7.2	5.3	8.9	8.2	6.1	6.4		4.5	4.4			18.0
20.0				7.0	6.4	4.8	7.0	6.9	5.1	7.1	7.9	5.2	5.8	6.2	4.4	4.3			20.0
22.0				5.5	5.9	4.6	5.6	6.3	4.9	5.7	6.4	5.0	5.7	5.9	5.2	4.1	4.1	4.3	22.0
24.0				4.4	5.1	4.5	4.4	5.1	4.7	4.6	5.2	4.9	4.8	5.4	5.0	3.8	3.8	4.0	24.0
26.0				3.5	4.1	4.4	3.5	4.1	4.5	3.6	4.2	4.7	3.8	4.4	4.7	3.5	3.6	3.7	26.0
28.0				2.7	3.2	3.6	2.7	3.2	3.6	2.8	3.4	3.8	3.1	3.6	4.0	3.2	3.3	3.0	28.0
30.0				2.0	2.5	2.8	2.1	2.5	2.9	2.2	2.7	3.0	2.4	2.9	3.2	2.9	2.7	2.3	30.0
32.0				1.5	1.9	2.2	1.5	1.9	2.2	1.6	2.1	2.4	1.8	2.3	2.6	2.5	2.1	1.8	32.0
34.0				1.0	1.4	1.6	1.0	1.4	1.6	1.1	1.5	1.8	1.3	1.7	2.0	1.9	1.6	1.3	34.0
36.0					0.9	1.1	0.6	0.9	1.1	0.7	1.1	1.3	0.9	1.3	1.5	1.5	1.1	0.9	36.0
38.0						0.6		0.5	0.7		0.7	0.9	0.5	0.9	1.1	1.0	0.7	0.5	38.0
40.0												0.5		0.5	0.7	0.7			40.0
42.0																			42.0
44.0																			44.0
46.0																			46.0
48.0																			48.0
50.0																			50.0
52.0																			52.0
54.0																			54.0
56.0																			56.0
	2	2	1	2	2	1	2	2	1	2	2	1	1	1	1	1	1	1	

## Load Chart - Fixed Jib

性能表 - 副臂

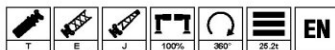


Unit:t

Height m	12.9m+17.5m			43.2m+17.5m			47.6m+17.5m			51.9m+17.5m			56.1m+17.5m			60m+17.5m			60m+9m	Height m
	0°	20°	40°	0°	20°	40°	0°	20°	40°	0°	20°	40°	0°	20°	40°	0°	20°	40°	0°	
5.0	7.1																			5.0
6.0	6.8																			6.0
7.0	6.5																			7.0
8.0	6.2																			8.0
9.0	5.9	4.8																		9.0
10.0	5.6	4.5																		10.0
11.0	5.3	4.2		5.9																11.0
12.0	4.8	3.9		5.8																12.0
14.0	4.2	3.5	2.9	5.7			5.3			4.6									7.5	14.0
16.0	3.7	3.1	2.7	5.5			5.2			4.6			3.8						7.2	16.0
18.0	3.3	2.8	2.4	5.4	3.9		5.1	4.1		4.5			3.8			3.3			7.0	18.0
20.0		2.6	2.2	5.1	3.7		4.9	3.8		4.5	3.9		3.8			3.3			6.6	20.0
22.0		2.3	2.1	5.0	3.5	2.5	4.7	3.7	2.5	4.3	3.7		3.8	3.7		3.2	2.6		6.2	22.0
24.0			2.0	4.7	3.3	2.4	4.5	3.5	2.4	4.3	3.5	2.5	3.7	3.5		3.0	2.5		5.9	24.0
26.0				4.4	3.1	2.3	4.5	3.3	2.3	4.3	3.3	2.4	3.7	3.4	2.5	2.9	2.5		5.6	26.0
28.0				4.2	3.0	2.3	4.3	3.1	2.3	4.2	3.2	2.3	3.7	3.3	2.5	2.8	2.4	2.5	5.3	28.0
30.0				3.9	2.8	2.2	4.2	2.9	2.2	4.0	3.1	2.3	3.7	3.2	2.4	2.7	2.4	2.4	5.1	30.0
32.0				3.7	2.7	2.1	4.0	2.8	2.2	3.8	2.9	2.2	3.6	3.0	2.4	2.6	2.3	2.4	4.9	32.0
34.0				3.6	2.6	2.1	3.6	2.7	2.1	3.5	2.8	2.2	3.4	3.0	2.3	2.5	2.3	2.4	4.7	34.0
36.0				3.3	2.4	2.0	3.4	2.5	2.1	3.3	2.7	2.1	3.3	2.8	2.2	2.4	2.2	2.3	4.3	36.0
38.0				3.1	2.3	2.0	3.2	2.5	2.0	3.1	2.5	2.0	3.2	2.7	2.2	2.2	2.2	2.3	4.0	38.0
40.0				2.9	2.2	1.9	2.9	2.3	1.9	2.9	2.5	2.0	3.0	2.7	2.1	1.9	2.2	2.2	3.7	40.0
42.0					2.1	1.9	2.5	2.3	1.9	2.5	2.4	2.0	2.7	2.5	2.1	1.6	2.0	2.2	3.4	42.0
44.0						1.8		2.2	1.9	2.2	2.3	1.9	2.3	2.4	2.1	1.3	1.7	2.0	3.1	44.0
46.0								2.1	1.8	1.8	2.2	1.9	1.9	2.3	2.0	1.1	1.4	1.8	2.7	46.0
48.0									1.8		1.8	1.8	1.6	2.0	2.0		1.2	1.6	2.4	48.0
50.0											1.7		1.7	1.9				1.4	2.0	50.0
52.0															1.5			1.2	1.8	52.0
54.0																			1.5	54.0
56.0																			1.3	56.0
⚡	1	1	1	1	1	1	1	1	1	1	1	1	1	1	1	1	1	1	1	⚡

# Load Chart - Fixed Jib

性能表 - 副臂

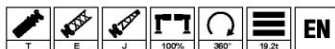


Unit:t

Jib 副臂	12.9m+17.5m			43.2m+17.5m			47.6m+17.5m			51.9m+17.5m			56.1m+17.5m			60m+17.5m			60m+9m	Jib 副臂
	0°	20°	40°	0°	20°	40°	0°	20°	40°	0°	20°	40°	0°	20°	40°	0°	20°	40°	0°	
5.0	7.1																			5.0
6.0	6.8																			6.0
7.0	6.5																			7.0
8.0	6.2																			8.0
9.0	5.9	4.8																		9.0
10.0	5.6	4.5																		10.0
11.0	5.3	4.2		5.9																11.0
12.0	4.8	3.9		5.8																12.0
14.0	4.2	3.5	2.9	5.7			5.3			4.6									7.5	14.0
16.0	3.7	3.1	2.7	5.5			5.2			4.6			3.8						7.2	16.0
18.0	3.3	2.8	2.4	5.4	3.9		5.1	4.1		4.5			3.8			3.3			7.0	18.0
20.0		2.6	2.2	5.1	3.7		4.9	3.9		4.5	3.9		3.8			3.3			6.6	20.0
22.0		2.3	2.1	5.0	3.5	2.5	4.7	3.7	2.5	4.3	3.7		3.8	3.7		3.2	2.6		6.2	22.0
24.0			2.0	4.7	3.3	2.4	4.5	3.5	2.4	4.3	3.5	2.5	3.7	3.5		3.0	2.5		5.9	24.0
26.0				4.4	3.1	2.3	4.5	3.3	2.3	4.3	3.3	2.4	3.7	3.4	2.5	2.9	2.5		5.6	26.0
28.0				4.2	3.0	2.3	4.3	3.1	2.3	4.2	3.2	2.3	3.7	3.3	2.5	2.8	2.4	2.5	5.3	28.0
30.0				3.9	2.8	2.2	4.2	2.9	2.2	4.0	3.1	2.3	3.7	3.2	2.4	2.7	2.4	2.4	5.1	30.0
32.0				3.7	2.7	2.1	4.0	2.8	2.2	3.8	2.9	2.2	3.6	3.0	2.4	2.6	2.3	2.4	4.8	32.0
34.0				3.6	2.6	2.1	3.6	2.7	2.1	3.5	2.8	2.2	3.4	3.0	2.3	2.5	2.3	2.4	4.6	34.0
36.0				3.2	2.4	2.0	3.1	2.5	2.1	3.2	2.7	2.1	3.3	2.8	2.2	2.4	2.2	2.3	4.1	36.0
38.0				2.7	2.3	2.0	2.7	2.5	2.0	2.7	2.5	2.0	2.9	2.7	2.2	2.2	2.2	2.3	3.6	38.0
40.0				2.3	2.2	1.9	2.2	2.3	1.9	2.3	2.5	2.0	2.4	2.7	2.1	1.9	2.2	2.2	3.1	40.0
42.0					2.1	1.9	1.8	2.3	1.9	1.9	2.3	2.0	2.0	2.5	2.1	1.6	2.0	2.2	2.7	42.0
44.0						1.8		1.9	1.9	1.6	2.0	1.9	1.7	2.1	2.1	1.3	1.7	2.0	2.3	44.0
46.0							1.5	1.7	1.2	1.6	1.9	1.4	1.7	2.0	1.1	1.4	1.8	2.0	46.0	
48.0								1.4		1.3	1.5	1.1	1.4	1.7		1.2	1.5	1.7	48.0	
50.0											1.2		1.1	1.3			1.2	1.4	50.0	
52.0														1.0			1.0	1.2	52.0	
54.0																		0.9	54.0	
56.0																			0.7	56.0
⚡	1	1	1	1	1	1	1	1	1	1	1	1	1	1	1	1	1	1	1	⚡

## Load Chart - Fixed Jib

性能表 - 副臂

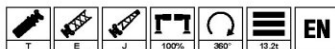


Unit:t

Height m	12.9m+17.5m			43.2m+17.5m			47.6m+17.5m			51.9m+17.5m			56.1m+17.5m			60m+17.5m			60m+9m	Height m
	0°	20°	40°	0°	20°	40°	0°	20°	40°	0°	20°	40°	0°	20°	40°	0°	20°	40°	0°	
5.0	7.1																			5.0
6.0	6.8																			6.0
7.0	6.5																			7.0
8.0	6.2																			8.0
9.0	5.9	4.8																		9.0
10.0	5.6	4.5																		10.0
11.0	5.3	4.2		5.9																11.0
12.0	4.8	3.9		5.8																12.0
14.0	4.2	3.5	2.9	5.7			5.3			4.6									7.5	14.0
16.0	3.7	3.1	2.7	5.5			5.2			4.6			3.8						7.2	16.0
18.0	3.3	2.8	2.4	5.4	3.9		5.1	4.1		4.5			3.8			3.3			7.0	18.0
20.0		2.6	2.2	5.1	3.7		4.9	3.8		4.5	3.9		3.8			3.3			6.6	20.0
22.0		2.3	2.1	5.0	3.5	2.5	4.7	3.7	2.5	4.3	3.7		3.8	3.7		3.2	2.6		6.2	22.0
24.0			2.0	4.7	3.3	2.4	4.5	3.5	2.4	4.3	3.5	2.5	3.7	3.5		3.0	2.5		5.9	24.0
26.0				4.4	3.1	2.3	4.5	3.3	2.3	4.3	3.3	2.4	3.7	3.4	2.5	2.9	2.5		5.6	26.0
28.0				4.2	3.0	2.3	4.3	3.1	2.3	4.2	3.2	2.3	3.7	3.3	2.5	2.8	2.4	2.5	5.3	28.0
30.0				3.9	2.8	2.2	3.9	2.9	2.2	4.0	3.1	2.3	3.7	3.2	2.4	2.7	2.4	2.4	4.7	30.0
32.0				3.3	2.7	2.1	3.3	2.8	2.2	3.3	2.9	2.2	3.5	3.0	2.4	2.6	2.3	2.4	4.0	32.0
34.0				2.7	2.6	2.1	2.7	2.7	2.1	2.8	2.8	2.2	2.9	3.0	2.3	2.5	2.3	2.4	3.4	34.0
36.0				2.2	2.4	2.0	2.2	2.5	2.1	2.3	2.7	2.1	2.4	2.8	2.2	2.4	2.2	2.3	2.9	36.0
38.0				1.8	2.3	2.0	1.8	2.3	2.0	1.8	2.4	2.0	2.0	2.5	2.2	2.2	2.2	2.3	2.5	38.0
40.0				1.4	1.9	1.9	1.4	1.9	1.9	1.4	1.9	2.0	1.6	2.1	2.1	1.9	2.1	2.0	2.1	40.0
42.0					1.5	1.7	1.0	1.5	1.8	1.1	1.6	1.9	1.2	1.7	2.0	1.6	1.7	1.6	1.8	42.0
44.0						1.3		1.1	1.4	0.8	1.2	1.5	0.9	1.3	1.6	1.3	1.4	1.3	1.5	44.0
46.0								0.8	1.0	0.5	0.9	1.1	0.6	1.0	1.3	1.1	1.0	1.0	1.2	46.0
48.0									0.7		0.6	0.8		0.7	1.0		0.8	0.7	1.0	48.0
50.0												0.5		0.5	0.7			0.5	0.7	50.0
52.0																				52.0
54.0																				54.0
56.0																				56.0
⚡	1	1	1	1	1	1	1	1	1	1	1	1	1	1	1	1	1	1	1	⚡

# Load Chart - Fixed Jib

性能表 - 副臂

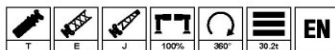


Unit:t

Height m	12.9m+17.5m			43.2m+17.5m				47.6m+17.5m			51.9m+17.5m			56.1m+17.5m			60m+17.5m			60m+9m	Height m	
	0°	20°	40°	0°	20°	40°	0°	20°	40°	0°	20°	40°	0°	20°	40°	0°	20°	40°	0°			
5.0	7.1																				5.0	
6.0	6.8																					6.0
7.0	6.5																					7.0
8.0	6.2																					8.0
9.0	5.9	4.8																				9.0
10.0	5.6	4.5																				10.0
11.0	5.3	4.2				5.9																11.0
12.0	4.8	3.9				5.8																12.0
14.0	4.2	3.5	2.9			5.7			5.3			4.6									7.5	14.0
16.0	3.7	3.1	2.7			5.5			5.2			4.6			3.8						7.2	16.0
18.0	3.3	2.8	2.4			5.4	3.9		5.1	4.1		4.5			3.8			3.3			7.0	18.0
20.0		2.6	2.2			5.1	3.7		4.9	3.9		4.5	3.9		3.8			3.3			6.6	20.0
22.0		2.3	2.1			5.0	3.5	2.5	4.7	3.7	2.5	4.3	3.7		3.8	3.7		3.2	2.6		6.2	22.0
24.0			2.0			4.7	3.3	2.4	4.5	3.5	2.4	4.3	3.5	2.5	3.7	3.5		3.0	2.5		5.7	24.0
26.0						4.2	3.1	2.3	4.2	3.3	2.3	4.3	3.3	2.4	3.7	3.4	2.5	2.9	2.5		5.4	26.0
28.0						3.4	3.0	2.3	3.4	3.1	2.3	3.5	3.2	2.3	3.6	3.3	2.5	2.8	2.4	2.5	4.0	28.0
30.0						2.8	2.8	2.2	2.7	2.9	2.2	2.8	3.1	2.3	2.9	3.2	2.4	2.7	2.4	2.4	3.4	30.0
32.0						2.2	2.7	2.1	2.2	2.8	2.2	2.2	2.9	2.2	2.4	3.0	2.4	2.6	2.3	2.4	2.8	32.0
34.0						1.7	2.3	2.1	1.7	2.3	2.1	1.7	2.4	2.2	1.9	2.5	2.3	2.5	2.3	2.3	2.3	34.0
36.0						1.3	1.8	2.0	1.2	1.8	2.1	1.3	1.9	2.1	1.4	2.0	2.2	2.0	1.9	1.8	1.9	36.0
38.0						0.9	1.4	1.7	0.9	1.4	1.8	0.9	1.5	1.9	1.1	1.6	2.0	1.6	1.5	1.4	1.5	38.0
40.0						0.6	1.0	1.3	0.5	1.0	1.3	0.6	1.1	1.4	0.7	1.2	1.6	1.2	1.1	1.1	1.2	40.0
42.0							0.7	0.9		0.7	0.9		0.7	1.1		0.9	1.2	0.9	0.8	0.7	1.0	42.0
44.0								0.5			0.6			0.7		0.6	0.9	0.6	0.5	0.5	0.7	44.0
46.0																0.5						46.0
48.0																						48.0
50.0																						50.0
52.0																						52.0
54.0																						54.0
56.0																						56.0
⚡	1	1	1	1	1	1	1	1	1	1	1	1	1	1	1	1	1	1	1	1	1	⚡

## Load Chart - Fixed Jib

性能表 - 副臂

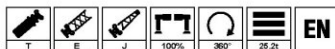


Unit:t

Jib Length (m)	12.9m+9.5m+10.4m			43.2m+9.5m+10.4m			47.6m+9.5m+10.4m			51.9m+9.5m+10.4m			56.1m+9.5m+10.4m			60m+9.5m+10.4m			Jib Weight (t)
	0°	20°	40°	0°	20°	40°	0°	20°	40°	0°	20°	40°	0°	20°	40°	0°	20°	40°	
5.0	11.4																		5.0
6.0	10.1																		6.0
7.0	9.0	7.1																	7.0
8.0	7.9	6.4																	8.0
9.0	7.0	5.7																	9.0
10.0	6.1	5.1	4.6																10.0
11.0	5.4	4.6	4.2																11.0
12.0	4.7	4.1	3.8	6.7															12.0
14.0	3.9	3.5	3.3	6.3			5.7												14.0
16.0	3.2	3.0	2.9	5.9			5.5		4.6			3.6							16.0
18.0	2.7	2.6	2.5	5.4	5.0		5.2	5.2	4.5			3.4							18.0
20.0	2.3	2.2	2.2	5.0	4.6	3.6	4.9	4.8	4.4	4.7		3.3							20.0
22.0		1.9	1.9	4.6	4.2	3.3	4.7	4.5	3.5	4.3	4.4	3.7	3.2	3.6		2.9			22.0
24.0			1.7	4.3	3.8	3.1	4.4	4.1	3.3	4.2	4.1	3.5	3.1	3.5	3.6	2.9	2.8		24.0
26.0				4.0	3.5	2.9	4.1	3.8	3.1	4.2	3.9	3.3	3.1	3.3	3.5	2.9	2.7	2.8	26.0
28.0				3.7	3.2	2.6	3.9	3.5	2.9	4.0	3.7	3.1	3.0	3.2	3.3	2.9	2.7	2.7	28.0
30.0				3.4	2.9	2.5	3.7	3.2	2.7	3.9	3.5	2.9	3.0	3.1	3.1	2.9	2.6	2.6	30.0
32.0				3.1	2.7	2.3	3.4	3.0	2.5	3.7	3.2	2.8	2.9	3.0	3.0	2.9	2.6	2.6	32.0
34.0				3.0	2.4	2.1	3.2	2.7	2.3	3.5	3.0	2.6	2.9	2.9	2.8	2.6	2.5	2.5	34.0
36.0				2.7	2.2	2.0	3.0	2.5	2.2	3.1	2.8	2.5	2.8	2.7	2.6	2.2	2.2	2.3	36.0
38.0				2.4	2.1	1.8	2.6	2.3	2.0	2.6	2.6	2.3	2.7	2.6	2.5	1.7	1.9	2.0	38.0
40.0				2.1	1.9	1.8	2.1	2.2	1.9	2.1	2.4	2.2	2.3	2.5	2.4	1.3	1.5	1.6	40.0
42.0				1.7	1.7	1.7	1.7	1.9	1.8	1.7	2.0	2.0	1.8	2.1	2.2	1.2	1.2	1.4	42.0
44.0					1.5	1.5	1.3	1.5	1.7	1.3	1.6	1.8	1.5	1.7	1.9	1.0	1.1	1.2	44.0
46.0						1.3		1.2	1.3	1.0	1.2	1.4	1.1	1.4	1.5		1.0	1.1	46.0
48.0									0.9		0.9	1.0		1.0	1.2			1.0	48.0
50.0																			50.0
52.0																			52.0
54.0																			54.0
56.0																			56.0
Σ	2	1	1	1	1	1	1	1	1	1	1	1	1	1	1	1	1	1	Σ

# Load Chart - Fixed Jib

性能表 - 副臂

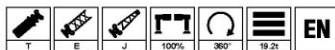


Unit:t

Jib m	12.9m+9.5m+10.4m			43.2m+9.5m+10.4m			47.6m+9.5m+10.4m			51.9m+9.5m+10.4m			56.1m+9.5m+10.4m			60m+9.5m+10.4m			Jib m
	0°	20°	40°	0°	20°	40°	0°	20°	40°	0°	20°	40°	0°	20°	40°	0°	20°	40°	
5.0	11.4																		5.0
6.0	10.1																		6.0
7.0	9.0	7.1																	7.0
8.0	7.9	6.4																	8.0
9.0	7.0	5.7																	9.0
10.0	6.1	5.1	4.6																10.0
11.0	5.4	4.6	4.2																11.0
12.0	4.7	4.1	3.8	6.7															12.0
14.0	3.9	3.5	3.3	6.3			5.7												14.0
16.0	3.2	3.0	2.9	5.9			5.5		4.6			3.6							16.0
18.0	2.7	2.6	2.5	5.4	5.0		5.2	5.2	4.5			3.4							18.0
20.0	2.3	2.2	2.2	5.0	4.6	3.6	4.9	4.8	4.4	4.7		3.3							20.0
22.0		1.9	1.9	4.6	4.2	3.3	4.7	4.5	3.5	4.3	4.4	3.7	3.2	3.6		2.9			22.0
24.0			1.7	4.3	3.8	3.1	4.4	4.1	3.3	4.2	4.1	3.5	3.1	3.5	3.6	2.9	2.8		24.0
26.0				4.0	3.5	2.9	4.1	3.8	3.1	4.2	3.9	3.3	3.1	3.3	3.5	2.9	2.7	2.8	26.0
28.0				3.7	3.2	2.6	3.9	3.5	2.9	4.0	3.7	3.1	3.0	3.2	3.3	2.9	2.7	2.7	28.0
30.0				3.4	2.9	2.5	3.7	3.2	2.7	3.9	3.5	2.9	3.0	3.1	3.1	2.9	2.6	2.6	30.0
32.0				3.1	2.7	2.3	3.4	3.0	2.5	3.6	3.2	2.8	2.9	3.0	3.0	2.9	2.6	2.6	32.0
34.0				2.9	2.4	2.1	2.9	2.7	2.3	2.9	3.0	2.6	2.9	2.9	2.8	2.6	2.5	2.5	34.0
36.0				2.4	2.2	2.0	2.3	2.5	2.2	2.4	2.8	2.5	2.5	2.7	2.6	2.2	2.2	2.3	36.0
38.0				1.9	2.1	1.8	1.9	2.2	2.0	1.9	2.2	2.3	2.0	2.4	2.5	1.7	1.9	2.0	38.0
40.0				1.5	1.7	1.8	1.4	1.7	1.9	1.5	1.8	2.0	1.6	1.9	2.1	1.3	1.5	1.6	40.0
42.0				1.1	1.3	1.5	1.0	1.3	1.5	1.1	1.4	1.6	1.2	1.5	1.7	1.2	1.2	1.4	42.0
44.0					1.0	1.1		0.9	1.1		1.0	1.2	0.9	1.1	1.3	1.0	1.1	1.2	44.0
46.0												0.8		0.8	0.9		1.0	0.9	46.0
48.0																		0.6	48.0
50.0																			50.0
52.0																			52.0
54.0																			54.0
56.0																			56.0
Σ	2	1	1	1	1	1	1	1	1	1	1	1	1	1	1	1	1	1	Σ

## Load Chart - Fixed Jib

性能表 - 副臂

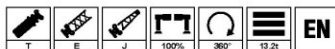


Unit:t

Height m	12.9m+9.5m+10.4m			43.2m+9.5m+10.4m			47.6m+9.5m+10.4m			51.9m+9.5m+10.4m			56.1m+9.5m+10.4m			60m+9.5m+10.4m			Height m
	0°	20°	40°	0°	20°	40°	0°	20°	40°	0°	20°	40°	0°	20°	40°	0°	20°	40°	
5.0	11.4																		5.0
6.0	10.1																		6.0
7.0	9.0	7.1																	7.0
8.0	7.9	6.4																	8.0
9.0	7.0	5.7																	9.0
10.0	6.1	5.1	4.6																10.0
11.0	5.4	4.6	4.2																11.0
12.0	4.7	4.1	3.8	6.7															12.0
14.0	3.9	3.5	3.3	6.3			5.7												14.0
16.0	3.2	3.0	2.9	5.9			5.5		4.6			3.6							16.0
18.0	2.7	2.6	2.5	5.4	5.0		5.2	5.2	4.5			3.4							18.0
20.0	2.3	2.2	2.2	5.0	4.6	3.6	4.9	4.8	4.4	4.7		3.3							20.0
22.0		1.9	1.9	4.6	4.2	3.3	4.7	4.5	3.5	4.3	4.4	3.7	3.2	3.6		2.9			22.0
24.0			1.7	4.3	3.8	3.1	4.4	4.1	3.3	4.2	4.1	3.5	3.1	3.5	3.6	2.9	2.8		24.0
26.0				4.0	3.5	2.9	4.1	3.8	3.1	4.2	3.9	3.3	3.1	3.3	3.5	2.9	2.7	2.8	26.0
28.0				3.7	3.2	2.6	3.9	3.5	2.9	4.0	3.7	3.1	3.0	3.2	3.3	2.9	2.7	2.7	28.0
30.0				3.2	2.9	2.5	3.1	3.2	2.7	3.2	3.5	2.9	3.0	3.1	3.1	2.9	2.6	2.6	30.0
32.0				2.5	2.7	2.3	2.5	2.9	2.5	2.5	3.0	2.8	2.7	3.0	3.0	2.9	2.6	2.6	32.0
34.0				1.9	2.3	2.1	1.9	2.3	2.3	2.0	2.4	2.6	2.1	2.5	2.8	2.6	2.5	2.3	34.0
36.0				1.5	1.8	2.0	1.4	1.8	2.0	1.5	1.8	2.1	1.6	2.0	2.2	2.2	2.1	1.8	36.0
38.0				1.0	1.3	1.5	1.0	1.3	1.5	1.0	1.4	1.6	1.2	1.5	1.7	1.7	1.7	1.4	38.0
40.0					0.9	1.1		0.9	1.1		0.9	1.2		1.1	1.3	1.3	1.3	1.0	40.0
42.0															0.9	1.2	0.9		42.0
44.0																1.0			44.0
46.0																			46.0
48.0																			48.0
50.0																			50.0
52.0																			52.0
54.0																			54.0
56.0																			56.0
⚡	2	1	1	1	1	1	1	1	1	1	1	1	1	1	1	1	1	1	⚡

# Load Chart - Fixed Jib

性能表 - 副臂

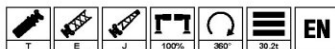


Unit:t

Height m	12.9m+9.5m+10.4m			43.2m+9.5m+10.4m			47.6m+9.5m+10.4m			51.9m+9.5m+10.4m			56.1m+9.5m+10.4m			60m+9.5m+10.4m			Capacity t
	0°	20°	40°	0°	20°	40°	0°	20°	40°	0°	20°	40°	0°	20°	40°	0°	20°	40°	
5.0	11.4																		5.0
6.0	10.1																		6.0
7.0	9.0	7.1																	7.0
8.0	7.9	6.4																	8.0
9.0	7.0	5.7																	9.0
10.0	6.1	5.1	4.6																10.0
11.0	5.4	4.6	4.2																11.0
12.0	4.7	4.1	3.8	6.7															12.0
14.0	3.9	3.5	3.3	6.3			5.7												14.0
16.0	3.2	3.0	2.9	5.9			5.5		4.6			3.6							16.0
18.0	2.7	2.6	2.5	5.4	5.0		5.2	5.2	4.5			3.4							18.0
20.0	2.3	2.2	2.2	5.0	4.6	3.6	4.9	4.8	4.4	4.7		3.3							20.0
22.0		1.9	1.9	4.6	4.2	3.3	4.7	4.5	3.5	4.3	4.4	3.7	3.2	3.6		2.9			22.0
24.0			1.7	4.3	3.8	3.1	4.3	4.1	3.3	4.2	4.1	3.5	3.1	3.5	3.6	2.9	2.8		24.0
26.0				3.4	3.5	2.9	3.4	3.8	3.1	3.5	3.9	3.3	3.1	3.3	3.5	2.9	2.7	2.8	26.0
28.0				2.7	3.2	2.6	2.6	3.1	2.9	2.7	3.2	3.1	2.8	3.2	3.3	2.9	2.7	2.7	28.0
30.0				2.0	2.5	2.5	1.9	2.4	2.7	2.0	2.5	2.9	2.1	2.6	3.0	2.9	2.6	2.1	30.0
32.0				1.4	1.8	2.1	1.4	1.8	2.1	1.4	1.9	2.2	1.6	2.0	2.3	2.6	2.0	1.6	32.0
34.0				0.9	1.3	1.6	0.9	1.3	1.6	0.9	1.3	1.6	1.1	1.5	1.8	2.0	1.5	1.1	34.0
36.0						1.1			1.1		0.9	1.1		1.0	1.3	1.5	1.1	0.7	36.0
38.0																1.1	0.7		38.0
40.0																0.8			40.0
42.0																			42.0
44.0																			44.0
46.0																			46.0
48.0																			48.0
50.0																			50.0
52.0																			52.0
54.0																			54.0
56.0																			56.0
⚡	2	1	1	1	1	1	1	1	1	1	1	1	1	1	1	1	1	1	⚡

## Load Chart - Fixed Jib

性能表 - 副臂



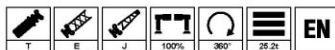
Unit:t

Height m	12.9m+9.5m+17.5m			43.2m+9.5m+17.5m			47.6m+9.5m+17.5m			51.9m+9.5m+17.5m			56.1m+9.5m+17.5m			60m+9.5m+17.5m			Height m
	0°	20°	40°	0°	20°	40°	0°	20°	40°	0°	20°	40°	0°	20°	40°	0°	20°	40°	
7.0	5.8																		7.0
8.0	5.5																		8.0
9.0	5.2																		9.0
10.0	4.8																		10.0
11.0	4.3																		11.0
12.0	3.9	3.3																	12.0
14.0	3.3	2.9																	14.0
16.0	2.8	2.5		3.9			3.4												16.0
18.0	2.4	2.1	2.0	3.7			3.2			2.9									18.0
20.0	2.0	1.8	1.7	3.4	3.0		3.1			2.8			2.3						20.0
22.0	1.7	1.5	1.5	3.2	2.8		3.0	2.9		2.7			2.2						22.0
24.0	1.4	1.3	1.3	3.0	2.5	1.9	2.8	2.7		2.6	2.8		2.2			2.2			24.0
26.0		1.2	1.1	2.8	2.3	1.7	2.7	2.5	1.9	2.5	2.6		2.1	2.4		2.2			26.0
28.0		1.0	0.9	2.5	2.1	1.6	2.5	2.3	1.8	2.4	2.5	1.9	2.1	2.3		2.2	1.8		28.0
30.0				2.4	2.0	1.5	2.3	2.1	1.6	2.3	2.3	1.8	2.1	2.2	1.9	2.2	1.7		30.0
32.0				2.2	1.8	1.4	2.2	1.9	1.5	2.2	2.2	1.7	2.1	2.1	1.8	2.0	1.6	1.5	32.0
34.0				2.0	1.6	1.3	2.0	1.8	1.4	2.1	2.0	1.6	2.0	2.0	1.7	1.8	1.6	1.5	34.0
36.0				1.9	1.5	1.2	1.9	1.6	1.3	2.0	1.8	1.5	2.0	1.9	1.6	1.6	1.5	1.5	36.0
38.0				1.7	1.4	1.1	1.8	1.5	1.2	2.0	1.7	1.5	2.0	1.8	1.5	1.4	1.5	1.5	38.0
40.0				1.6	1.3	1.0	1.6	1.4	1.1	1.9	1.6	1.3	1.9	1.7	1.4	1.2	1.5	1.5	40.0
42.0				1.4	1.2	1.0	1.5	1.3	1.1	1.8	1.4	1.2	1.8	1.6	1.3	1.0	1.3	1.5	42.0
44.0				1.3	1.1	0.9	1.4	1.3	1.0	1.7	1.3	1.1	1.8	1.5	1.1	1.0	1.2	1.4	44.0
46.0				1.2	1.0	0.8	1.3	1.2	0.9	1.5	1.2	1.0	1.6	1.4	1.1	1.0	1.1	1.3	46.0
48.0				1.0	0.9	0.8	1.1	1.1	0.9	1.2	1.1	1.0	1.2	1.3	1.0		1.0	1.2	48.0
50.0							0.9	1.1	0.9	0.9	1.0	0.9	1.0	1.2	0.9			1.0	50.0
52.0							0.9	0.8		0.9	0.8		1.0	0.8			1.0		52.0
54.0																			54.0
56.0																			56.0
㊦	1	1	1	1	1	1	1	1	1	1	1	1	1	1	1	1	1	1	㊦

# Load Chart - Fixed Jib

## 性能表 - 副臂

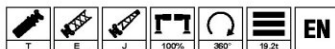
Unit:t



Jib Length (m)	12.9m+9.5m+17.5m			43.2m+9.5m+17.5m			47.6m+9.5m+17.5m			51.9m+9.5m+17.5m			56.1m+9.5m+17.5m			60m+9.5m+17.5m			Capacity (t)
	0°	20°	40°	0°	20°	40°	0°	20°	40°	0°	20°	40°	0°	20°	40°	0°	20°	40°	
7.0	5.8																		7.0
8.0	5.5																		8.0
9.0	5.2																		9.0
10.0	4.8																		10.0
11.0	4.3																		11.0
12.0	3.9	3.3																	12.0
14.0	3.3	2.9																	14.0
16.0	2.8	2.5		3.9			3.4												16.0
18.0	2.4	2.1	2.0	3.7			3.2			2.9									18.0
20.0	2.0	1.8	1.7	3.4	3.0		3.1			2.8			2.3						20.0
22.0	1.7	1.5	1.5	3.2	2.8		3.0	2.9		2.7			2.2						22.0
24.0	1.4	1.3	1.3	3.0	2.5	1.9	2.8	2.7		2.6	2.8		2.2			2.2			24.0
26.0		1.2	1.1	2.8	2.3	1.7	2.7	2.5	1.9	2.5	2.6		2.1	2.4		2.2			26.0
28.0		1.0	0.9	2.5	2.1	1.6	2.5	2.3	1.8	2.4	2.5	1.9	2.1	2.3		2.2	1.8		28.0
30.0				2.4	2.0	1.5	2.3	2.1	1.6	2.3	2.3	1.8	2.1	2.2	1.9	2.2	1.7		30.0
32.0				2.2	1.8	1.4	2.2	1.9	1.5	2.2	2.2	1.7	2.1	2.1	1.8	2.0	1.6	1.5	32.0
34.0				2.0	1.6	1.3	2.0	1.8	1.4	2.1	2.0	1.6	2.0	2.0	1.7	1.8	1.6	1.5	34.0
36.0				1.9	1.5	1.2	1.9	1.6	1.3	2.0	1.8	1.5	2.0	1.9	1.6	1.6	1.5	1.5	36.0
38.0				1.7	1.4	1.1	1.8	1.5	1.2	2.0	1.7	1.5	2.0	1.8	1.5	1.4	1.5	1.5	38.0
40.0				1.6	1.3	1.0	1.6	1.4	1.1	1.9	1.6	1.3	1.9	1.7	1.4	1.2	1.5	1.5	40.0
42.0				1.4	1.2	1.0	1.5	1.3	1.1	1.6	1.4	1.2	1.7	1.6	1.3	1.0	1.3	1.5	42.0
44.0				1.3	1.1	0.9	1.2	1.3	1.0	1.2	1.3	1.1	1.3	1.5	1.1	1.0	1.2	1.4	44.0
46.0				1.0	1.0	0.8	0.9	1.2	0.9	0.9	1.2	1.0	1.0	1.4	1.1	1.0	1.1	1.3	46.0
48.0					0.9	0.8		1.0	0.9		1.0	1.0		1.1	1.0		1.0	1.2	48.0
50.0									0.9			0.9			0.9			1.0	50.0
52.0																		0.8	52.0
54.0																			54.0
56.0																			56.0
ㄗ	1	1	1	1	1	1	1	1	1	1	1	1	1	1	1	1	1	1	ㄗ

## Load Chart - Fixed Jib

性能表 - 副臂

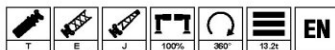


Unit:t

吊钩高度 m	12.9m+9.5m+17.5m			43.2m+9.5m+17.5m			47.6m+9.5m+17.5m			51.9m+9.5m+17.5m			56.1m+9.5m+17.5m			60m+9.5m+17.5m			吊钩高度 m
	0°	20°	40°	0°	20°	40°	0°	20°	40°	0°	20°	40°	0°	20°	40°	0°	20°	40°	
7.0	5.8																		7.0
8.0	5.5																		8.0
9.0	5.2																		9.0
10.0	4.8																		10.0
11.0	4.3																		11.0
12.0	3.9	3.3																	12.0
14.0	3.3	2.9																	14.0
16.0	2.8	2.5		3.9			3.4												16.0
18.0	2.4	2.1	2.0	3.7			3.2			2.9									18.0
20.0	2.0	1.8	1.7	3.4	3.0		3.1			2.8			2.3						20.0
22.0	1.7	1.5	1.5	3.2	2.8		3.0	2.9		2.7			2.2						22.0
24.0	1.4	1.3	1.3	3.0	2.5	1.9	2.8	2.7		2.6	2.8		2.2				2.2		24.0
26.0		1.2	1.1	2.8	2.3	1.7	2.7	2.5	1.9	2.5	2.6		2.1	2.4			2.2		26.0
28.0		1.0	0.9	2.5	2.1	1.6	2.5	2.3	1.8	2.4	2.5	1.9	2.1	2.3			2.2	1.8	28.0
30.0				2.4	2.0	1.5	2.3	2.1	1.6	2.3	2.3	1.8	2.1	2.2	1.9		2.2	1.7	30.0
32.0				2.2	1.8	1.4	2.2	1.9	1.5	2.2	2.2	1.7	2.1	2.1	1.8	2.0	1.6	1.5	32.0
34.0				2.0	1.6	1.3	2.0	1.8	1.4	2.1	2.0	1.6	2.0	2.0	1.7	1.8	1.6	1.5	34.0
36.0				1.9	1.5	1.2	1.9	1.6	1.3	2.0	1.8	1.5	2.0	1.9	1.6	1.6	1.5	1.5	36.0
38.0				1.6	1.4	1.1	1.5	1.5	1.2	1.5	1.7	1.5	1.6	1.8	1.5	1.4	1.5	1.5	38.0
40.0				1.2	1.3	1.0	1.1	1.4	1.1	1.1	1.6	1.3	1.2	1.7	1.4	1.2	1.5	1.5	40.0
42.0					1.2	1.0		1.2	1.1		1.3	1.2	0.9	1.4	1.3	1.0	1.3	1.5	42.0
44.0					0.9	0.9		0.9	1.0		0.9	1.1		1.0	1.1	1.0	1.2	1.1	44.0
46.0											0.9				1.0	1.0	1.0	0.8	46.0
48.0																	0.7	0.6	48.0
50.0																			50.0
52.0																			52.0
54.0																			54.0
56.0																			56.0
吊钩重量 t	1	1	1	1	1	1	1	1	1	1	1	1	1	1	1	1	1	1	吊钩重量 t

# Load Chart - Fixed Jib

## 性能表 - 副臂



Unit:t

吊高 m	12.9m+9.5m+17.5m			43.2m+9.5m+17.5m			47.6m+9.5m+17.5m			51.9m+9.5m+17.5m			56.1m+9.5m+17.5m			60m+9.5m+17.5m			吊高 m	
	0°	20°	40°	0°	20°	40°	0°	20°	40°	0°	20°	40°	0°	20°	40°	0°	20°	40°		
7.0	5.8																		7.0	
8.0	5.5																		8.0	
9.0	5.2																		9.0	
10.0	4.8																		10.0	
11.0	4.3																		11.0	
12.0	3.9	3.3																	12.0	
14.0	3.3	2.9																	14.0	
16.0	2.8	2.5		3.9			3.4												16.0	
18.0	2.4	2.1	2.0	3.7			3.2			2.9									18.0	
20.0	2.0	1.8	1.7	3.4	3.0		3.1			2.8			2.3						20.0	
22.0	1.7	1.5	1.5	3.2	2.8		3.0	2.9		2.7			2.2						22.0	
24.0	1.4	1.3	1.3	3.0	2.5	1.9	2.8	2.7		2.6	2.8		2.2				2.2		24.0	
26.0		1.2	1.1	2.8	2.3	1.7	2.7	2.5	1.9	2.5	2.6		2.1	2.4			2.2		26.0	
28.0			1.0	0.9	2.5	2.1	1.6	2.5	2.3	1.8	2.4	2.5	1.9	2.1	2.3		2.2	1.8	28.0	
30.0					2.4	2.0	1.5	2.3	2.1	1.6	2.3	2.3	1.8	2.1	2.2	1.9	2.2	1.7	30.0	
32.0					2.0	1.8	1.4	1.9	1.9	1.5	1.9	2.2	1.7	2.0	2.1	1.8	2.0	1.6	15	32.0
34.0					1.5	1.6	1.3	1.4	1.8	1.4	1.4	2.0	1.6	1.5	2.0	1.7	1.8	1.6	15	34.0
36.0					1.1	1.5	1.2	1.0	1.6	1.3	1.0	1.6	1.5	1.1	1.7	1.6	1.6	1.5	15	36.0
38.0						1.2	1.1		1.2	1.2		1.2	1.5		1.3	1.5	1.4	1.4	1.2	38.0
40.0							1.0			1.1			1.2		0.9	1.3	1.2	1.0	0.9	40.0
42.0																0.9	0.9	0.7	0.6	42.0
44.0																	0.6			44.0
46.0																				46.0
48.0																				48.0
50.0																				50.0
52.0																				52.0
54.0																				54.0
56.0																				56.0
吊重 t	1	1	1	1	1	1	1	1	1	1	1	1	1	1	1	1	1	1	1	吊重 t

Remark:

- Value listed are the max. capacity when the crane is in a level condition on solid ground or surface.
- Radius refers to actual radius with boom deflection considered.
- The rated load values determined by stability in the load chart are determined in accordance with ISO4305.
- Value above are calculated with hooks and lifting slings considered (600kg main hook block, 210/350kg aux. hook block).
- When the fifth outrigger is landed in position, value listed are applicable for 360-degree operation.
- Load value is given according to the larger radius or boom length value when the actual radius or boom length falls between two numbers above.

備註:

- 起重性能表中給定數值是在平整堅固的地面上，裝機調平狀態下起重機額定起重重量。
- 起重性能表中工作半徑是指吊載後的實際半徑。
- 起重性能表中的穩定性決定的額定載荷數值的確定遵循 ISO4305。
- 起重性能表中給定起重重量包括起重量（主起重鉤重 600kg，副起重鉤重 210/350kg）和吊具的重量。
- 打開第五支腿時，表中數值適用於全方位（360°）作業。
- 如果實際臂長和幅度介於兩個數值之間時，取較長的臂長及較大的幅度所決定的額定起重重量進行起吊作業。





## SANY GROUP CRANE BU

### SANY Mobile Crane and Tower Crane Industrial Park

No.168 Jinzhou Avenue, Jinzhou Development Zone, Changsha City, Hunan Province, P.R. China Zip 410600

### SANY Crawler Crane Industrial Park

No. 2188 Daishan Road, Wuxing District, Huzhou City, Zhejiang Province, P. R. China Zip 313028

Consulting [crd@sany.com.cn](mailto:crd@sany.com.cn)

After-sales Service 0086-400 609 8318 (Overseas)

#### Reminder:

Any change in the technical parameters and configuration due to product modification or upgrade may occur without prior notice. The machine in the picture may include additional equipment. This brochure is for reference only, and goods in kind shall prevail. Copyright at SANY. No part of this brochure may be copied or used for any purpose without written approval from SANY.

© Edited in December 2024

### 三一集團起重機事業部

三一輪式、塔式起重機產業園：中國湖南省長沙金洲開發區金洲大道168號 郵編：410600

三一履帶式起重機產業園：中國浙江省湖州市吳興區皇山路2188號 郵編：313028

郵箱：[crd@sany.com.cn](mailto:crd@sany.com.cn)

售後服務：0086-400 609 8318(海外)

#### 注意事項

圖片僅供參考，實際參數及配置以實物為準。恕不另行通知。本公司在產品升級或改型時，產品外觀等可能會有所變動，但均為同一系列，其餘三一標識標記，均與原標記無異，不影響產品質量及性能。

© 2024年12月第1版

SANY GROUP: [www.sanygroup.com](http://www.sanygroup.com) | SANY USED CRANE: [sanyusedcranes.en.alibaba.com](http://sanyusedcranes.en.alibaba.com)

SANY CRANE



[@sanycrane4878](https://www.youtube.com/@sanycrane4878)

@sanycrane4878



[Sany-crane](https://www.linkedin.com/company/sany-crane)



[SANYCraneGlobal](https://www.facebook.com/SANYSANYGlobal)

