

SANY

i-Cheon **CE**
宜宗重機械有限公司

SPECIFICATION



台灣經銷商：宜宗重機械有限公司

宏江重機械企業有限公司

展場地址：台中市后里區三線路18-16號

展場電話：04-25590268 / 0975-193161

 400 t

 90 m

 135 m

SAC4000C8-8

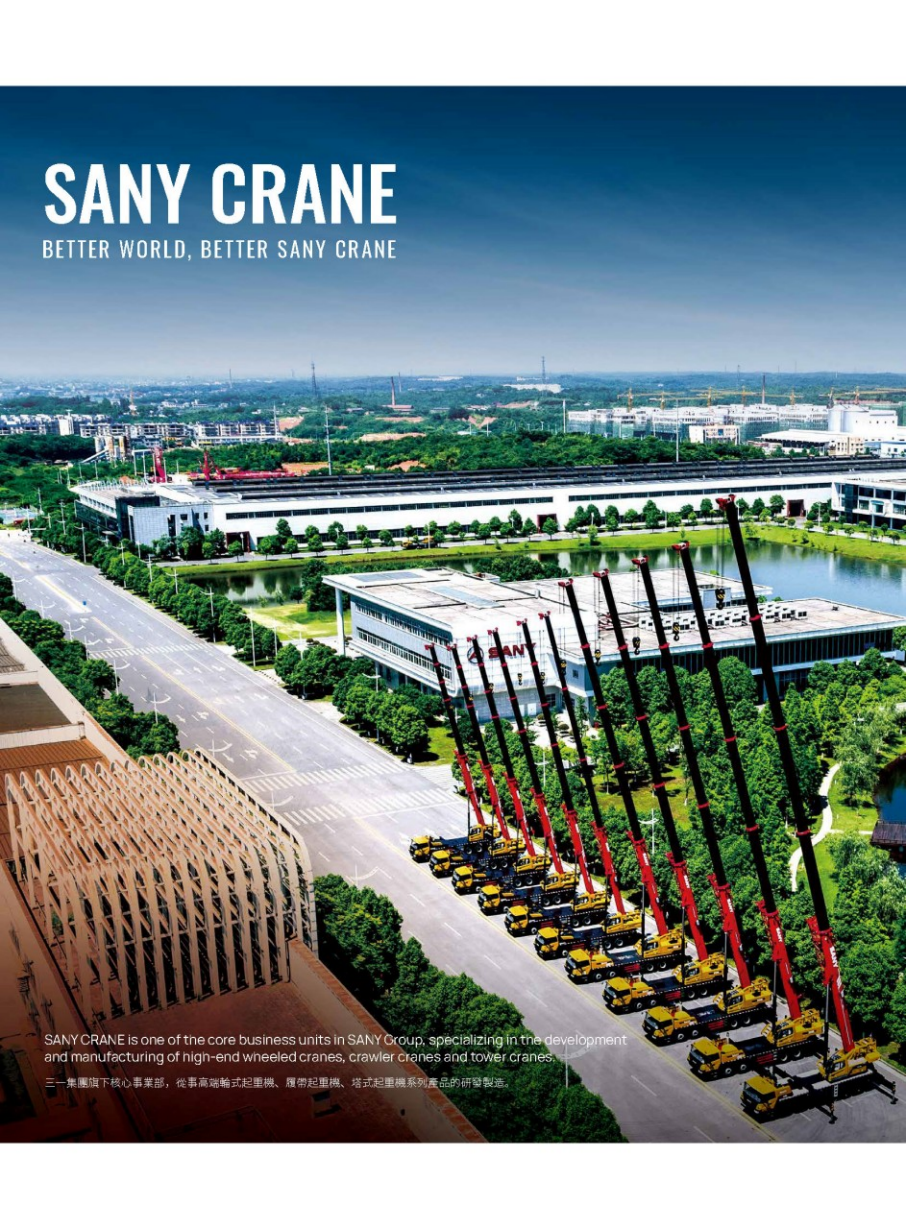
SANY ALL TERRAIN CRANE

QUALITY CHANGES THE WORLD

www.sanyglobal.com

SANY CRANE

BETTER WORLD, BETTER SANY CRANE

An aerial photograph of a large industrial facility, likely a Sany Crane factory. In the foreground, a long line of yellow and black mobile cranes is parked on a paved area, their long jibs extending upwards. The factory buildings are modern, with large windows and flat roofs. A road with a crosswalk runs alongside the factory. In the background, there are more industrial structures, greenery, and a body of water under a clear blue sky.

SANY CRANE is one of the core business units in SANY Group, specializing in the development and manufacturing of high-end wheeled cranes, crawler cranes and tower cranes.

三一集團旗下核心事業部，從事高強輪式起重機、履帶起重機、塔式起重機系列產品的研發製造。



CONTENTS

目錄

Highlights 整機亮點	▶ 04
Overall Dimensions 整機尺寸	▶ 06
Technical Specifications 整機參數	▶ 07
Counterweight 配重	▶ 09
Machine Introduction 整機介紹	▶ 10
Working Conditions & Code Description 工况組合及工况代碼說明	▶ 13
T	13
TN	15
TS	17
TJ	19
TSJ	21
Icon Description 圖標說明	▶ 24
SANY Overseas Service 三一海外服務	▶ 25

HIGHLIGHTS

整機亮點

Superior Lifting Performance

起重性能強

Boom: 90m 8-section U shape boom, box-type boom head with strong load-bearing capacity.

Fixed jib: variable combinations from 15m to 57m, mechanical adjustment at 0°/20°/40°, the maximum length of the boom and jib can reach 136.6m, covering the installation of towers below 125m.

Superlift device: with a variable deployment angle of 20°/30°, significantly enhancing the lifting performance of the long boom section.

Luffing cylinder: dual luffing cylinders, providing more powerful lifting and better maneuverability.

Counterweight: self-assembly & disassembly with load displacement counterweight, available in three positions - front, middle, and rear; with a displacement of up to 2m, combining lifting performance with the ability to operate in narrow spaces.

Outrigger span: with a transverse outrigger span of 9m, providing better stability and greater lifting capacity for long-distance lifting.

主起重臂: 8節U型主臂, 全伸臂90m, 箱型臂頭, 承載能力強;

固定副臂: 15m-57m多種臂長組合, 0°/20°/40°可變位, 主臂+副臂最大臂長可達136.6m, 覆蓋125m以下安裝安裝;

超起裝置: 20°/30°可變擺角, 長臂超起重性大, 大幅提升;

變幅油缸: 配備雙變幅油缸, 副臂更給力, 操縱性更好;

配重: 自前至後帶變位配重, 前中後三種位置, 位移可達2m, 兼具起吊性能和狹窄空間作業能力;

支腿跨距: 橫向支腿跨距9m, 穩定性更好, 承頂更給力。

Excellent Driving Performance

行駛性能卓越

Innovative six-axle reinforced chassis structure, featuring all-wheel steering, and axle 1635656 drive, offering various steering and driving modes for exceptional maneuverability.

Brand new intelligent multi-mode hydro pneumatic suspension system, with real-time monitoring of vehicle posture, active hoisting, and adaptive damping functions, providing a more comfortable ride and ensuring stable driving.

Powerful power system with full-axle dual-caliper disc brakes, equipped with a 390kW Weichai engine for chassis and a 199kW Weichai engine for superstructure. The FAST automatic transmission with hydraulic retarder greatly enhances driving safety and smoothness.

Strong capability for transfer on site with heavy load. Standard 445 large tires, speed up to 70km/h with full boom and outriggers, and 40km/h with full boom, outriggers, and outrigger pads, significantly improving transfer efficiency.

八橋加強型底盤結構, 全輪轉向, 前後橋(1/3/5/6橋)驅動, 多種轉向及驅動模式, 行駛能力超強;

全新智能多模式油氣懸掛系統, 車體姿態實時監控, 主動提升和變用尼泊爾懸等功能, 乘車更舒適, 行駛更穩定;

強勁動力及傳動系統, 全橋雙潤滑系統, 下車架390kw發動機, 上車架199kw發動機, 法士特帶液力變速器自動換擋系統, 極大提高行駛安全性和平穩性;

非載轉運能力強: 标配445大輪胎, 全橋全副狀最高速度可達70km/h, 全臂全副帶超起帶支腿變位狀態最高可達40km/h, 轉場效率大幅提高。



All Terrain Crane

SAC4000C8-8 / 400t Lifting Capacity

Efficient and Reliable

高效可靠

Multi-pump, multi-circuit hydraulic system, with electric proportional and multi-stage pressure control, achieving optimized speed range and fine inching performance, resulting in superior performance.

Innovative tension control technology, enabling one-key automatic tensioning and fold/unfold of the superlift, increasing operational efficiency by 20%. Significantly improved lifting performance of the mid and long boom sections. Superlift active correction technology against side bending, ensuring more worry-free and safer long-boom operations.

Few operational constraints, multiple modes superlift configuration, three outigger span combinations and three counterweight slewing radius, providing comprehensive adaptability to narrow job site requirements.

Equipped with triple-row roller slewing bearings, offering strong loadbearing capacity and long service life.

多泵、多回路液壓系統，電比例及多級壓力控制，實現速度分段和微動性優化，性能更卓越；全新定長液壓控制技術，一鍵自動張緊及收力展超起，作業效率提升20%，中長臂展起重性能大幅提升；超起抗旁彎主動修正技術，長臂作業更省心更安全；作業半徑小，多模式超起作業工況，三種支腿跨距組合，三疊配重回轉半徑，兩種超起展開角，全方位滿足狹窄場地需求；配置三種滾柱式回轉支承，承載力強，壽命長。

Safe and Reliable

安全可靠

Multi-functional wireless remote control system makes crane operations more convenient and safer.

Utilizes high-precision, high-stability, and highly intelligent load moment indicator system to provide comprehensive protection for lifting operations.

Equipped with a variety of sensors to provide timely feedback on data information, enabling real-time monitoring and keeping track of the vehicle's working status at all times.

多功能無線遙控系統，起重操作更加方便，操作更加安全。採用高精度、高穩定性、高智能化力矩限制器系統，全方位保護吊載作業。配置豐富的傳感器器件，及時反饋數據信息，實時監控，隨時掌握整車工作狀態。

GCP System

GCP系統

Equipment remote monitoring and management system, equipped with powerful functions for equipment operation status and operational parameter collection, enabling remote fault diagnosis and management.

Intelligent monitoring. High-definition image quality, monitoring from six angles, comprehensively overseeing equipment operation conditions.

國內首創的設備遠程監控管理系統，具備強大的設備運行工況、作業參數采集功能，可實現過程及時診斷、管理。

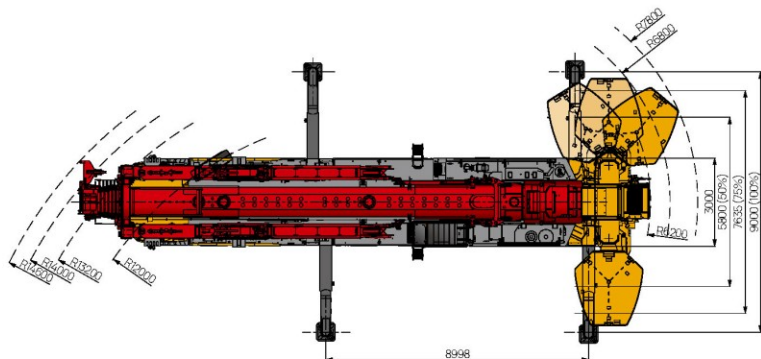
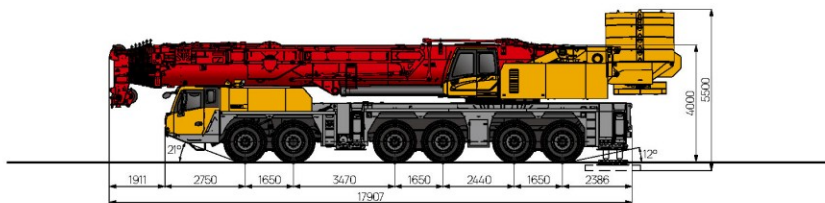
智能監控：高清畫質，取鏡六路，全面看護設備運作情況。



OVERALL DIMENSIONS

整機尺寸

Unit: mm



TECHNICAL SPECIFICATIONS





整機參數

CATEGORY 類型	ITEM 項目	UNIT 單位	VALUE 參數	
CAPACITY 額定起重量	Max. lifting capacity 最大起重量	t	400	
WEIGHT 重量參數	Gross weight 整機總質量	kg	87000	
POWER (Chassis) 發動機參數(下車)	Engine model 發動機型號	-	WP13G530E310 濶柴	
	Max. engine power 發動機最大功率	kW/rpm	390/2100	
	Max. engine torque 發動機最大輸出扭矩	N·m/rpm	2300/1200~1600	
POWER (Superstructure) 發動機參數(上車)	Engine model 發動機型號	-	WP7G270E301 濶柴	
	Max. engine power 發動機最大功率	kW/rpm	199/2000	
	Max. engine torque 發動機最大輸出扭矩	N·m/rpm	1200/1200~1500	
DIMENSIONS 尺寸參數	Overall length 整機全長	mm	17907	
	Overall width 整機全寬	mm	3000	
	Overall height 整機全高	mm	4000	
TRAVEL (Full boom and full outrigger configuration) 行駛參數(全臂全腿狀態)	Max. travel speed 最高行駛速度	km/h	70	
	Min. steering radius 最小轉彎半徑	m	12	
	Min. steering radius of boom tip 臂端最小轉彎半徑	m	14	
	Wheel formula 車輪模式	-	12×8×12	
	Min. ground clearance 最小離地間隙	mm	340	
	Approach angle 接近角	°	21	
	Departure angle 離去角	°	12	
	Max. gradeability 最大爬坡度	-	46%	
Fuel consumption per 100 km 每100公里油耗	L	100		
MAIN PERFORMANCE 主要性能參數	Min. rated lifting radius 最小額定幅度	m	2.4	
	Tail slewing radius 配重尾部回轉半徑	m	6.2/6.8/7.8	
	Boom sections (Qty.) 臂節數	-	8	
	Boom shape 臂形狀	-	U shape U型	
	Max. lifting moment 最大起重力矩	Basic boom 基本臂	kN·m	9570
		Full-extension boom 全伸主臂	kN·m	3530
		Longest boom + fixed jib combination 最長主臂+固定副臂組合	kN·m	1240
	Boom length 臂長	Basic boom 基本臂	m	15.2
		Full-extension boom 全伸主臂	m	90
		Longest boom + fixed jib combination 最長主臂+固定副臂組合	m	136.6
	Max. lifting height 最大起重高度	Basic boom 基本臂	m	15
		Full-extension boom 全伸主臂	m	88
		Longest boom + fixed jib combination 最長主臂+固定副臂組合	m	135
Outrigger span (Longitudinal×Transverse) 支腿跨距(縱×橫)	m	8.9×9		
Jib offset 副臂安裝角度	°	0, 20, 40		
AIRCONDITIONER 空調	In operator's cab 上車空調	-	Heating & cooling 製冷、製熱	
	In driver's cab 下車空調	-	Heating & cooling 製冷、製熱	

TECHNICAL SPECIFICATIONS


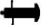
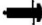
整機參數

■ Hook 吊鉤

			 kg	
12.5t	0	1	270	○
32t	1	3	487	○
80t	3	7	685	●
125t	5	11	1122	○
160t	7	14	1538	○

● Standard 標配 ○ Optional 選配











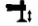

■ Max. supporting forces 最大支撐力

		
F _{max}	1240KN (126t)	1520KN (155t)

■ Gear 檔位

	
	12/R2
	12/R2

■ Operations 主要動作參數

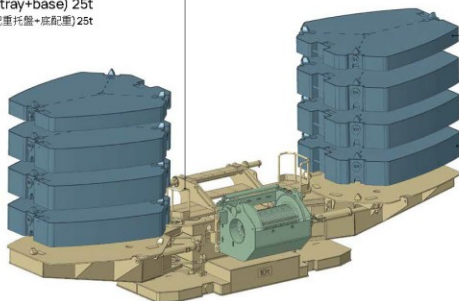
				
	125m/min	Φ22mm	500m	10.5t
	125m/min	Φ22mm	500m	10.5t
	1.0r/min			
	70s/100s			
	800s/800s			
	30s (extension 伸) /40s (Retraction 縮)			
	30s (extension 伸) /40s (Retraction 縮)			

COUNTERWEIGHT

配重



Counterweight receptacle ①
(frame+tray+base) 25t
配重底座(配重架+配重托盤+底座)25t



③ Counterweight plate 5t
配重塊5t

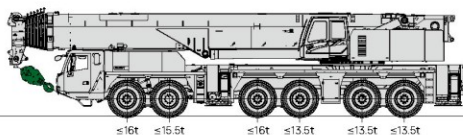
② Counterweight plate 10t
配重塊10t

Total weight 總重量	Counterweight Combinations 配重組合
0	0
25t	①
35t	①+③×2
45t	①+②×2
55t	①+②×2+③×2
65t	①+②×4
75t	①+②×4+③×2
85t	①+②×6
95t	①+②×6+③×2

■ Traveling with counterweight and hook block on board 帶載行駛能力

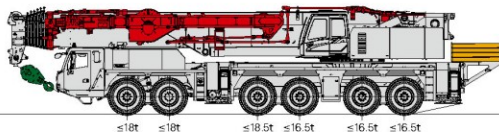
▲ 88t

Main machine + hooks
主機+吊鉤



▲ 104t

Main machine + hooks +
superlift + outrigger pads
主機+吊鉤+超起+支腿墊板



MACHINE INTRODUCTION

整機介紹

Carrier 下車

Driver's cab 駕駛室

- It is made of SANY independently developed new steel structure with excellent shock absorption and sealing, and designed with outward opening doors, comfortable driver's seat and co-driver's seat equipped with pneumatic suspension, adjustable steering wheel, wide-view rearview mirror, demister, HVAC, stereo radio, and complete set of control instruments and meters, which is more comfortable, secure and user-friendly.

駕駛室為三一自主開發新款駕駛室，自主開發新型鋼結構，減震性和封閉性優良。兩側外開式車門，配備氣動懸置的駕駛座與副駕駛座，可調整式的轉向盤、大視野後視鏡，配有優良的舒適駕駛椅、防霧器、冷暖空調，立體收音機等裝配，控制儀器和儀表齊全，更加舒適、安全、人性化。

Carrier frame 車架

- Designed and manufactured by SANY, the torsion-resistant box-type structure with optimized structure and low weight is welded by fine-grained high-strength steel plates. The outriggers are retracted in special fixed boxes, which are located between axle 2 and axle 3 and at the carrier frame tail, and equipped with front towing devices.

三一自主研發並專業化製造，結構優化，防扭轉箱型結構，精品超強鋼板焊接製作；支腿收縮在特製固定箱中，支腿箱位於2軸和3軸之間以及車架尾部，並且配備前牽引掛鉤。

Chassis engine 底盤發動機

- Model: WEICHAI WP13G530E310, electronically controlled, in-line 6-cylinder, water-cooled, supercharged, intercooled, electronic injection diesel engine.
- Rated power: 390kW/2100rpm.
- Max. torque: 2300N·m/(1200-1600) rpm.
- Emission standard: Comply with China III Standard.
- Fuel reservoir capacity: 560L.
- 型式：濰柴WP13G530E310，電控、直列六缸、水冷卻、增壓中冷、電噴、柴油發動機。
- 額定功率：390kW/2100rpm。
- 最大扭矩：2300Nm/1200-1600rpm。
- 環保性：排放符合歐III階段標準。
- 燃料箱容量：約560L。

Transmission 變速箱

- FAST AMT with integral hydraulic retarder for wear-free brake, features a wide range of speed ratio with 12 forward speeds and 2 reversing speeds, which is adaptable to slope climbing and high-speed traveling on public roads.
- 法士特手自一体變速箱(12個前進檔，2個倒檔)，一體式液力變速箱無磨損製動，既可滿足狂進場地爬坡又可滿足公路高速行駛。

Axle 車橋

- High quality axles, with all axles steady, and axles 1, 3, 5, 6 are driven. Axles 1, 2 adopt hydraulic power steering system with linkage feedback and axles 3-6 adopt electrohydraulic control steering, with assist for speed control and selectable special steering mode, for easy steering and flexible operation. Optional Kessler axle.
- 高品質車橋，全橋轉向，前後橋（1/3/5/6橋）驅動。1/2橋採用帶系反饋的液壓動力轉向系統，3/4/5/6橋採用電液控制轉向，可進行速度控制的輔助及可選擇的特殊轉向模式。轉向輕便，換控靈活。

Wheel formula 車輪模式

- 12×8×12.
- 8×8×12.

Suspension system 懸掛系統

- Multi-mode height adjustable hydro-pneumatic suspension system with hydraulic lockout, which can realize five modes including suspension, rigid locking, auto leveling, whole vehicle rising and single point rising & lowering. It can conduct real-time monitoring of vehicle attitude, smart identifying of axle load, active rising and self-adaptability to tough terrains, ensuring smoothness and lateral stability during driving.
- 智能多模式油氣懸掛系統，懸掛高度可調，帶液壓閉鎖裝置，能實現懸掛、彈性鎖定、自動調平、整車升降、單點升降五種模式。具備車載姿態精準監控、軸荷智能識別、主動提升和適應路面自適應等功能，寬寬更舒適，行駛更穩定。

Tires 輪胎

- 445 large tires, equipped with a tire pressure and temperature monitoring system.
- 445大輪胎，配備胎壓胎溫監測系統。

Brake 製動系統

- Dual circuit, air brake, disc brakes available.
- Service brake: air servo brakes on all wheels, dual circuits, all wheels equipped with disc brakes.
- Parking brake: actuated by pressure accumulators on axles 2 to 6.
- Assist brake: engine brake and exhaust brake, transmission hydraulic retarder brake.
- 雙回路、氣製動，配備盤式製動器。
- 行車制動器：所有車輪均採用氣壓制動，雙回路制動系統，盤式制動器。
- 駐車制動器：由儲能彈簧驅動作用在第二至第六橋上。
- 輔助制動器：發動機上帶有發動機制動、變速箱配液力緩速制動。

Steering 轉向系統

- All new constant pressure and constant flow steering system featuring linear following without lag and precise steering angle. Three steering emergency systems available. The steering mode is adjusted according to the speed, from 30 km/h, the 3rd and 4th axles stop steering. From 60 km/h, the 5th and 6th axles stop steering.
- 全新恒壓恒流響應智能轉向系統，線性跟隨無滯後，轉角精準零偏差；三重轉向應急系統，行駛更加安全可靠。
- 可分為六個轉向模式：1) 公路行駛模式(默認模式)；2) 全轉向模式；3) 蟹形模式；4) 無偏擺轉向模式；5) 獨立後橋轉向模式；6) 後橋獨立轉向模式。

MACHINE INTRODUCTION

整機介紹

Carrier 下車

Outrigger 支腿

- H-type two-stage telescopic outriggers. The telescopic hydraulic system of outrigger adopts electrical proportional control technology and is equipped with wireless remote control featuring high precision and easy operation, and has the function of automatic leveling.
- 活動支腿採用雙H型兩級伸縮支腿，支腿伸縮油壓系統採用電比例控制技術，並配置有無線遙控，並具有自動調平等功能，控制精度高，操作簡便。

Electrical system 電氣系統

- 24 V DC power supply. Chassis power supply can be cut off; equipped with auto lighting system; actions of the vehicle such as throttle and outrigger control are realized by electrical control with easy and fast operation; the electrical system has strong detection, logic, operation and other capabilities, and has the functions of fault diagnosis, centralized display and self-protection.
- The chassis adopts CAN bus system, which is provided with: fast, stable and accurate data transmission; multi-functional centralized display system; high protection grade of IP65; low power consumption with a maximum of 5W; with four function keys provided in the user interface; LCD is used for display adjustable for contrast.
- 採用24V直流電源，可實現下車電源切斷，配備汽車照明系統，車輛的動作，如油門、支腿伸縮等都經過電氣控制實現，使動作輕便、快捷；電氣系統有很強的檢測、邏輯、運算等能力，具備故障診斷、集中顯示及自保護功能。
- 底盤採用CAN總線系統，具有數據快速、穩定、準確等優點；多功能的集中顯示系統；防護等級高，IP65；功率消耗小，最大僅有5W；在用戶界面提供四個功能鍵；顯示採用LCD液晶，對比度可調整。

Superstructure 上車

Operator's cab 操縱室

- Sany new type operator's cab, which can be tilted upward by 20°. It adopts corrosion-resistant steel plate, it is provided with full coverage softened interior, panoramic sunroof, tilt positioning of operator seat back and other human centered design make the operation comfortable and easy. Configure main and auxiliary display screens to seamlessly integrate the main console with the operating display system, providing a clear and comprehensive view of all operating condition data during the lifting operation. Touch screen with adjustable viewing angle, multi-screen and multi-angle monitoring to ensure operation safety and realize one-touch operation, the main boom, luffing jib and superlift hoist are equipped with monitors for centralized monitoring in key areas. Further combination of main console and operation display system enables quick and easy human-computer interaction, heating and cooling A/C is provided.
- 三一新款操縱室，0°~20°可變角度，採用耐腐蝕鋼板，配置全覆蓋軟化內飾、全景式天窗、可傾式座椅等人性化設計，操作更舒適、輕鬆；配置主、輔助顯示屏，實現主控臺與操作顯示系統有機結合，應用操作業的全部工況數據一目了然；觸摸式顯示屏，視角可調整、多畫面、多角度監控保障作業安全，滿足一體式操作；主臂及超起卷揚配備監視器，重點區域集中監視；主控臺與操作顯示系統有機結合，人機交互方便快捷；配備冷暖空調。

Engine 發動機

- Model: WP7G270E301, electronically controlled, in-line six-cylinder, water-cooled, supercharged intercooled and diesel engine.
- Rated power: 199kW/2000rpm.
- Max. torque: 1200Nm/1200-1500rpm.
- Emission standard: complying with Euro III.
- Fuel reservoir capacity: 400L.
- 型號: WP7G270E301, 電控、直列六缸、水冷卻、增壓中冷、柴油發動機。
- 功率: 199kW/2000rpm。
- 最大扭矩: 1200Nm/1200-1500rpm。
- 環保性: 排放符合歐III階段標準。
- 燃料箱有效容積: 400L。

Boom & telescoping system 吊臂系統

- Boom: It is composed of 1 base boom and 7 telescopic sections. It is made of fine-grained high-strength steel plates by bending and welding, with oval shape profile, it has good buckling resistance. The single cylinder automatic pinning system is adopted, and a double-acting cylinder can control the extension and retraction of all booms to achieve a combination of multiple boom lengths, the basic boom length is 15.2m and the full-extension boom length is 90m.
- Jib: the fixed jib can realize the length combination of 15m-57m. The offset can be changed according to the actual needs of working conditions to improve the automation level, reduce the labor intensity and improve the work efficiency.
- Superlift device: Its arranged on the left and right sides of the head of the base boom, and independent from each other. The superlift device can greatly improve the stress state of the boom, avoid side bending and reduce the downward deflection deformation of the boom, so that the deflection in the long boom state can be reduced by 20%-30%.
- 主起臂體: 由1節基本臂和7節伸縮臂組成，採用細晶粒高強度板折弯、焊接製成。採用橢圓形截面，抗屈曲性能好；採用單缸自動插銷式系統，一個雙作用油缸可以控制所有吊臂的伸縮，達到多檔臂長組合；基本臂長15.2m，全伸臂長90m。
- 副起臂體: 固定安裝: 可實現15m~57m的臂長組合，可避免工況實際需要而變化角度，提高自動化水平，減輕了勞動強度，提高了工作效率。
- 超起裝置: 布置於基本臂體部左右兩側，左右獨立；超起裝置使得超起臂的受力狀態得到很大改善，避免旁彎，减小超起臂的下彎變形，超起臂在長臂狀態下下彎度可減少20%-30%，超起臂能大幅提升。

MACHINE INTRODUCTION

整機介紹

■ Superstructure 上車

🔄 Slewing 回轉系統

- It is composed of fixed displacement motor and slewing reducer with mature technology and widely used on wheel cranes, at the same time, it adopts external meshing with slewing bearing to realize 360° full-slewing and stepless speed regulation; the slewing hydraulic system adopts a closed system, which can not only avoid the throttling loss of the open system, but also make the system have high efficiency; electric proportional brake pedal is used to realize emergency braking.
- 由技術成熟、並在汽車起重機上廣泛使用的定量馬達和回轉減速機組成，同時與回轉支承採用外啮合形式，以實現360°全回轉，無級調速；回轉液壓系統採用閉式系統，既能與避免開式系統的節流損失，又使系統具有較高的效率；電比例製動踏鉞，可實現緊急制動。

🏗️ Slewing platform 轉臺結構

- Designed and manufactured by SANY, the turntable made by fine-grained high strength steel has a better structure.
- 三一自主設計，結構更優化。由細晶粒高強鋼製成。

🔧 Hydraulic system 液壓系統

- Key hydraulic components including main pump, slewing pump, main valve, winch motor and balance valve are of high quality, ensuring the stability and reliability of the hydraulic system; the accurate parameter matching further improves the operation performance.
- Electro-proportional variable displacement piston pump is applied, and the pump displacement is adjusted in real-time by changing the opening of electric control joy, realizing high-precision flow control and reducing the energy consumption.
- Self-developed dual-pump shunt/confluence main valve enables higher speed in case of single motion and better maneuverability in case of combined motions.
- Passive compensated luffing down is adopted, ensuring better inching movement and stability.
- The slewing system is of closed type, and the flow rate and the flowing direction are changed by adjusting the variable pump swash plate, providing better inching mobility and stability.
- 採用高品質的主油泵、回轉泵、主閥、卷揚馬達、平衡閥等關鍵液壓元件，保證液壓系統穩定、可靠；透過精準的參數匹配，使操作性能更加優越。
- 採用電比例變量柱塞泵，透過電控手柄開度的變化，實時調節油流量，實現高精度流量控制，作業時無能量損耗。
- 採用自主研發的雙泵合/分流主閥，單動作雙泵合流效率更高，組合動作雙泵分流流控性更好。
- 採用自舉液壓平衡液壓系統，落鉞微動性、平穩性更優越。
- 回轉為閉式系統，透過調節變量泵斜盤的角度來改變流量及方向，微動性優越、回轉平穩。

🏗️ Hoist 起升系統

- Main hoist: Planetary gear reducer driven by hydraulic motor and special rope groove winch drum, with a built-in brake.
- Wire rope lock: The end of the wire rope is cast and directly installed in the lock sleeve, which improves the reeving speed.
- Max. single rope speed: approx. 125m/min.
- 液壓馬達驅動的行星齒輪減速機和專用捲揚卷鉞，內置製動齒。
- 鋼絲繩鎖具：採用高品質鋼絲繩端環，鋼絲繩端環直接安裝於鎖套內，提高了起重倍率的更換速度，方便快捷。
- 最大單繩速：約125m/min。

🏗️ Luffing system 變幅系統

- Double cylinders are adopted, the hydraulic system adopts dual-pump converging open hydraulic circuit, and the combination of electric proportional control, active luffing and passive luffing down can realize fast luffing at large elevation and stable slow luffing at small elevation. Luffing angle: 0°~82°.
- 雙油缸前頂式變幅，變幅角度0°~82°，液壓系統採用雙泵合流開式液壓回路，採用電比例控制、動力落幅和自重落幅相結合，可實現大角度快速落幅、小角度穩定慢速落幅。

🔧 Control system 控制系統

- Powered by 24V DC, it adopts IFM controller, cable wiring, CAN-BUS control network, and combines with conventional electrical to realize the logic control and electrical proportional control functions of the system.
- It has the functions of system real-time monitoring and automatic fault diagnosis.
- Lifting, slewing and luffing are controlled by two auto resettable multidirectional electric proportional joystick; boom extension and retraction are controlled by pedal; counterweight lifting, operator's cab tilting and turntable locking are all controlled by keys on the control panel.
- The display is connected with the controller by CAN bus, and its main functions include digital adjustment and display of electric proportional control parameters, fault code display of electric proportional system and real-time detection data display of hydraulic system.
- 由24V直流電源供電，採用IFM控制器、線纜佈線、CAN-BUS總線控制網絡，與常規電氣相結合，完成系統的邏輯控制與電比例控制功能。
- 具有系統實時監測和故障自動診斷功能。
- 起升、回轉、變幅、伸縮由兩個可自動復位多方向電比例手柄控制；輔助動作平衡升降、總鉞支腿位、轉臺鎖止均在顯示屏按鍵控制。
- 顯示器由CAN總線與控制器聯接，主要功能：電比例控制參數的數字化調整和顯示，電比例系統的故障代碼顯示，液壓系統實時檢測數據的顯示。

🏗️ Safety equipment 安全裝置

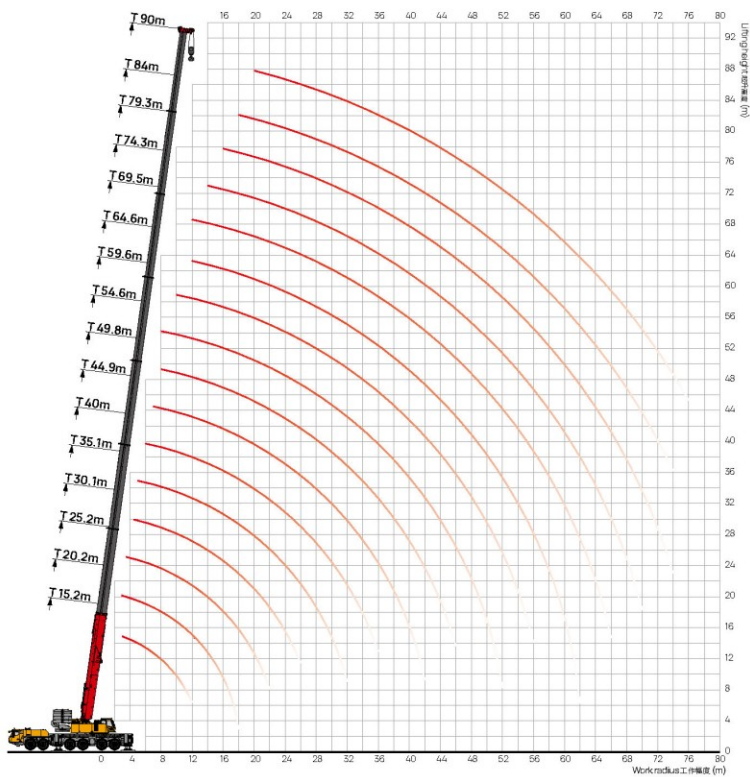
- A method of analytical mechanics is adopted and a load moment indicator calculation system based on the lifting mechanics model is established. Through online empty-load calibration, the lifting accuracy can reach ±3%.
- The hydraulic system is equipped with hydraulic balance valve, relief valve, two-way hydraulic lock, etc. to realize the stability and reliability of the hydraulic system.
- The boom and luffing jib hoists are equipped with 3rd wrap indicators to prevent over-hoist-stop of the wire rope.
- The boom head and jib head are equipped with A2B switch to prevent the wire rope from over winding.
- The boom head is equipped with an anemometer to detect whether the wind speed exceeds the allowable range.
- Super lift device retracting and releasing rope tension protection, jib installation and lifting protection.
- 採用分析力學方法，建立了基於起重力學模型的力矩限制器計算系統，通過在線空載標定，吊重精度達到±3%。
- 液壓系統設置液壓平衡閥、溢流閥、雙向液壓鎖等元件，實現液壓系統穩定可靠。
- 若鉞設置三保險裝置，防止鋼絲繩過繞。
- 臂鉞設置高度限位器，防止鋼絲繩過卷。
- 臂鉞鉗有急停鎖，檢測風速風速是否超額可作業允許範圍。
- 超鉞收鉞力矩保護程序，副臂安裝、吊鉞保護程序等。

🏗️ Counterweight 配重

- Combined variable counterweight. Variable combinations from 0t to 95t can meet the needs of different working conditions, maximize the performance of structural parts, achieve remote removal and installation, and a good inching-movement.
- 組合式帶載變位平衡重。0~95t多種組合方式，可滿足不同工況的需求，最大限度發揮結構件性能。可遠控拆卸及安裝，操作性好。

OPERATING RANGE - Telescopic Boom (T)

起升高度曲線 - 主臂



LOAD CHART - Telescopic Boom (T)**性能表 - 主臂**

Unit: t

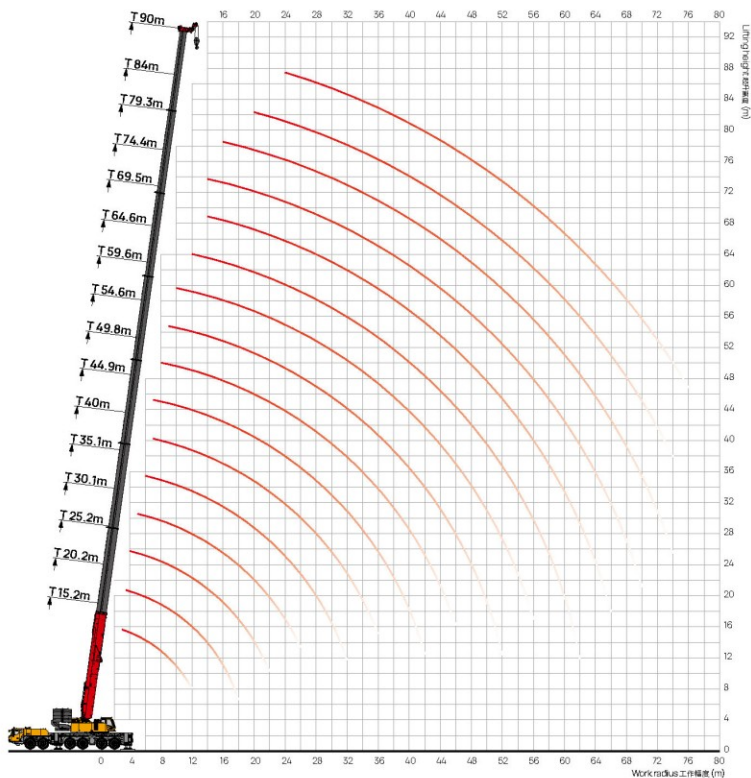
2.4	15.2	20.2	25.2	30.1	35.1	40.0	44.9	49.8	54.6	59.6	64.3	69.5	74.2	79.3	84.0	90.0	2.4							
4.00*																	2.4							
3.0	134.1	134.1															3.0							
3.5	134.1	134.1	131.2														3.5							
4.0	134.1	134.1	130.1														4.0							
4.5	133.5	133.5	129.5	127													4.5							
5.0	132.2	132.2	127.3	124	106.5												5.0							
6.0	131.2	131.2	125.6	120.3	106.5	98.7											6.0							
7.0	129	127.8	121	120.3	106	98.7	88.1										7.0							
8.0	115.8	116	115.9	115.2	105.7	98.7	88.1	74.1	58.2								8.0							
9.0	104.7	105.1	104.9	104.7	104.9	98.5	87.5	72	58.2								9.0							
10.0	95.7	95.5	95.5	95.5	95.7	96	86.8	66.3	58.2	45.4							10.0							
12.0	79.6	79.6	79.7	79.2	79.4	79.5	76.8	58.5	53.6	45.4	36	27.5					12.0							
14.0		67.8	67.2	68	68	68.2	68.3	53.9	47	42.5	34.9	27.5	20.5				14.0							
16.0		57.7	56.7	57.6	58.6	57.7	58.7	50.7	41.3	37.6	33.6	27.5	20.5	17			16.0							
18.0		36.5	49.6	49.5	50.6	51.6	50.6	46.6	36.9	34.1	29.8	27.2	20.5	17	14.1		18.0							
20.0			43.5	43.1	44.1	45.1	44.2	44.3	33	30.4	28.1	25.4	20.5	17	14.1	11.4	20.0							
22.0				37	37.9	38.8	39.9	39	40	29.5	27.4	26.2	23.6	19.4	17	14.1	11.4	22.0						
24.0					33.5	34.5	35.5	35.1	35.6	27	25.2	24.1	22.1	18.2	16.6	14.1	11.4	24.0						
26.0					29.9	30.8	31.8	32.9	31.9	24.7	23.7	22.5	19.3	17	15.6	13.7	11.4	26.0						
28.0						27.7	28.7	29.7	28.8	23	22.4	20.1	18.1	16	14.6	13	11.4	28.0						
30.0						25	26	27	26.1	20.6	20	18.6	16.9	15	13.8	12.2	11.2	30.0						
32.0						21.1	23.7	24.7	23.8	19.4	18.7	17	15.9	14.4	13.1	11.6	10.7	32.0						
34.0							21.2	22.5	21.4	18.5	17.3	16.1	15	13.6	12.3	11.1	10.1	34.0						
36.0							19.1	20.4	19.2	17.6	16.2	14.9	14.3	12.6	11.6	10.5	9.6	36.0						
38.0								18.5	17.3	16.9	15	13.9	13.6	11.8	11.1	10.1	9.3	38.0						
40.0								16.8	15.5	16.3	13.8	13	12.7	11.2	10.6	9.6	8.7	40.0						
42.0								11.9	14.2	15.1	12.7	11.9	11.9	10.6	10	9.1	8.3	42.0						
44.0									13.5	13.8	11.7	11.2	11.2	10.1	9.5	8.6	8	44.0						
46.0									12.8	12.5	11.2	10.2	10.5	9.4	8.9	8.2	7.6	46.0						
48.0										11.4	10.8	9.4	9.7	8.8	8.4	7.8	7.2	48.0						
50.0										10.3	10.4	8.7	9	8.1	8	7.4	6.9	50.0						
52.0											6.1	10	7.9	8.4	7.7	7.5	7	52.0						
54.0												9.2	7.4	7.6	6.8	7.2	6.8	54.0						
56.0												7.6	7	6.8	6.5	6.6	6.5	56.0						
58.0													6.6	6.1	6.2	6.2	6	58.0						
60.0														6.2	5.4	5.9	5.6	5.3	60.0					
62.0															3.3	4.8	5.3	5.2	5	62.0				
64.0																4.4	5.1	5	4.6	4.6	64.0			
66.0																	4	4.6	4.4	4	4.1	66.0		
68.0																		4	3.8	3.5	3.5	68.0		
70.0																			3.4	3.4	3	3	70.0	
72.0																				2.9	2.5	2.6	72.0	
74.0																					2.4	2.1	2.1	74.0
76.0																							1.7	76.0

Remark: ** Represents nominal lifting capacity.

備註: ** 代表名義起重重量。

OPERATING RANGE - Telescopic Boom + Auxiliary Boom Nose (TN)

起升高度曲線 - 臂尖滑輪





LOAD CHART - Telescopic Boom + Auxiliary Boom Nose (TN)

性能表 - 臂尖滑輪

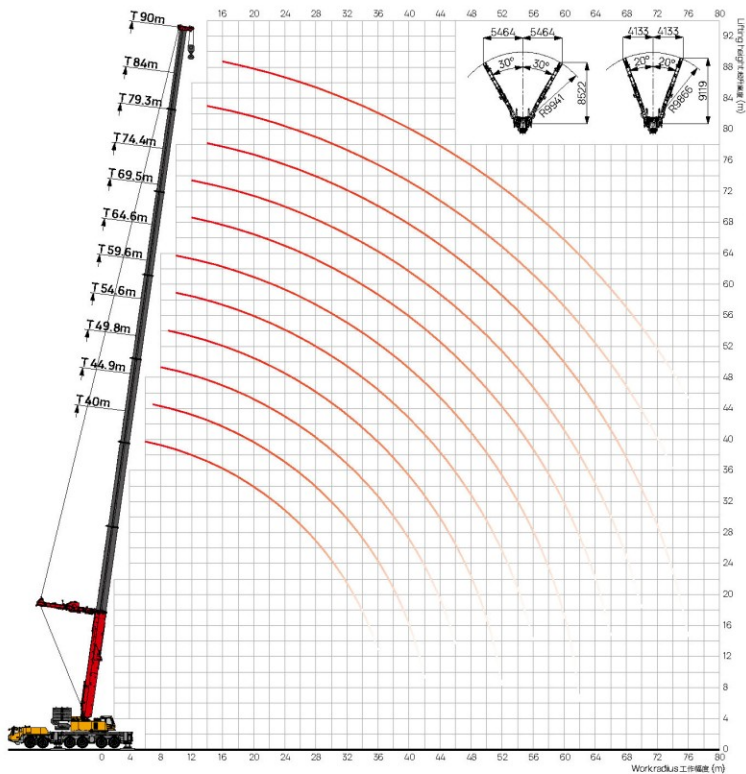


Unit: t

 m	15.2	20.2	25.2	30.1	35.1	40.0	44.9	49.8	54.6	59.6	64.3	69.5	74.2	79.3	84.0	90.0	 m
3.0	10.5																3.0
3.5	10.5	10.5															3.5
4.0	10.5	10.5	10.5														4.0
4.5	10.5	10.5	10.5														4.5
5.0	10.5	10.5	10.5	10.5													5.0
6.0	10.5	10.5	10.5	10.5	10.5												6.0
7.0	10.5	10.5	10.5	10.5	10.5	10.5	10.5										7.0
8.0	10.5	10.5	10.5	10.5	10.5	10.5	10.5	10.5									8.0
9.0	10.5	10.5	10.5	10.5	10.5	10.5	10.5	10.5	10.5								9.0
10.0	10.5	10.5	10.5	10.5	10.5	10.5	10.5	10.5	10.5	10.5							10.0
12.0	10.5	10.5	10.5	10.5	10.5	10.5	10.5	10.5	10.5	10.5	10.5						12.0
14.0		10.5	10.5	10.5	10.5	10.5	10.5	10.5	10.5	10.5	10.5	10.5					14.0
16.0		10.5	10.5	10.5	10.5	10.5	10.5	10.5	10.5	10.5	10.5	10.5	10.5	10.5			16.0
18.0		10.5	10.5	10.5	10.5	10.5	10.5	10.5	10.5	10.5	10.5	10.5	10.5	10.5			18.0
20.0			10.5	10.5	10.5	10.5	10.5	10.5	10.5	10.5	10.5	10.5	10.5	10.5	10.5		20.0
22.0			10.5	10.5	10.5	10.5	10.5	10.5	10.5	10.5	10.5	10.5	10.5	10.5	10.5		22.0
24.0				10.5	10.5	10.5	10.5	10.5	10.5	10.5	10.5	10.5	10.5	10.5	10.5	10.5	24.0
26.0				10.5	10.5	10.5	10.5	10.5	10.5	10.5	10.5	10.5	10.5	10.5	10.5	10.5	26.0
28.0					10.5	10.5	10.5	10.5	10.5	10.5	10.5	10.5	10.5	10.5	10.5	10.5	28.0
30.0					10.5	10.5	10.5	10.5	10.5	10.5	10.5	10.5	10.5	10.5	10.5	10.5	30.0
32.0					10.5	10.5	10.5	10.5	10.5	10.5	10.5	10.5	10.5	10.5	10.5	10.5	32.0
34.0						10.5	10.5	10.5	10.5	10.5	10.5	10.5	10.5	10.5	10.5	10	34.0
36.0						10.5	10.5	10.5	10.5	10.5	10.5	10.5	10.5	10.5	10.4	9.5	36.0
38.0							10.5	10.5	10.5	10.5	10.5	10.5	10.5	10.5	10	9.2	38.0
40.0							10.5	10.5	10.5	10.5	10.5	10.5	10.5	10.5	9.5	8.7	40.0
42.0							10.5	10.5	10.5	10.5	10.5	10.5	10.5	10	9	8.3	42.0
44.0								10.5	10.5	10.5	10.5	10.5	10	9.5	8.6	7.9	44.0
46.0									10.5	10.5	10.5	10.4	9.4	8.9	8.2	7.5	46.0
48.0									10.5	10.5	9.7	9.7	8.8	8.4	7.7	7.2	48.0
50.0									10.4	10.2	8.7	9	8.2	8	7.4	6.9	50.0
52.0									6.1	9.8	8	8.4	7.7	7.5	7	6.5	52.0
54.0										9.2	7.6	7.6	6.9	7.2	6.8	6.2	54.0
56.0										7.6	7.2	7	6.5	6.6	6.5	5.9	56.0
58.0											6.6	6.2	6.2	6.3	6	5.6	58.0
60.0											6.2	5.5	5.9	5.6	5.7	5.3	60.0
62.0											3.3	4.8	5.6	5.4	5.3	5	62.0
64.0												4.4	5.1	5	4.6	4.6	64.0
66.0												4	4.6	4.4	4.1	4.1	66.0
68.0													4	3.8	3.5	3.6	68.0
70.0													3.5	3.4	3	3.1	70.0
72.0														2.9	2.6	2.6	72.0
74.0														2.6	2.1	2.2	74.0
76.0																1.7	76.0

OPERATING RANGE - Telescopic Boom + Superlift Device (TS)



起升高度曲線 - 主臂 + 超起



LOAD CHART - Telescopic Boom + Superlift Device (TS)**性能表 - 主臂 + 超起**

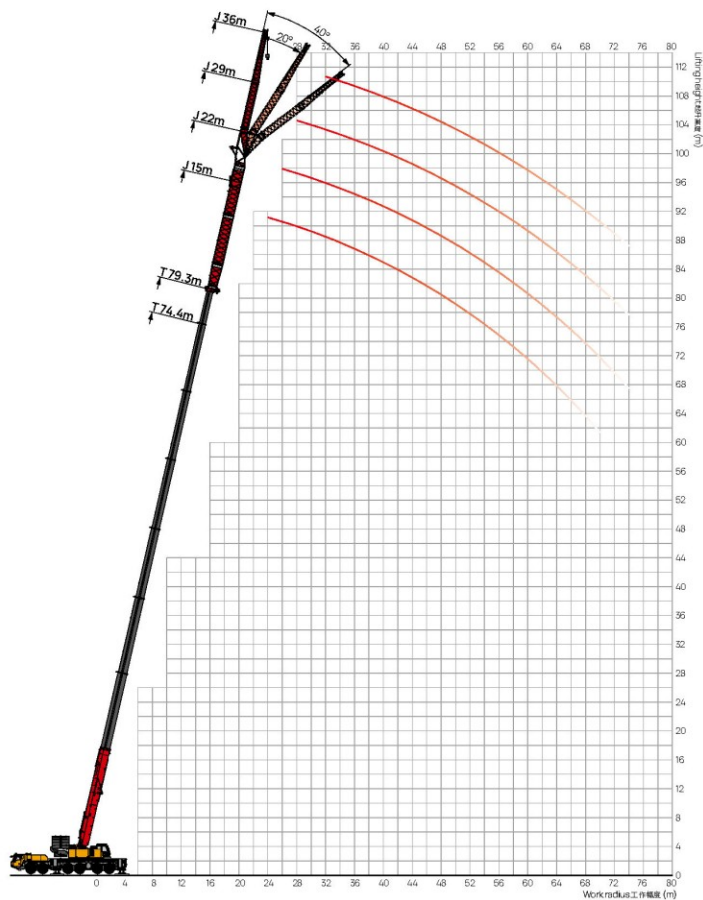
Unit: t



 m	40.0	44.9	49.8	54.6	59.6	64.3	69.5	74.2	79.3	84.0	90.0	 m
6.0	80.7											6.0
7.0	77.9	77.2										7.0
8.0	75.7	77.2	71.7									8.0
9.0	73.2	74.3	71.7	65.2								9.0
10.0	71	72.2	70	64.5	60.1	57.4						10.0
12.0	67	66.2	65.6	61.3	58.6	53.4	47.8	41.8				12.0
14.0	63.3	60.5	58.6	56	54.5	52	47.7	39.7	34.8	27.4		14.0
16.0	59.9	57.7	55.2	51.5	48.7	47	44	38.1	33.3	27.4	19.6	16.0
18.0	53	52.9	52	48.7	45.4	42.7	39	34.4	30.7	26.5	19.6	18.0
20.0	47.6	47.5	47	45.7	42.4	38.6	35.8	32.1	28.8	25	19.6	20.0
22.0	42.7	42	41.6	41	39.3	35.8	33.1	30.1	27.3	23.7	19.6	22.0
24.0	38.2	38.3	37.8	36.9	36.1	33.5	31.1	28.3	26	22.6	19.2	24.0
26.0	34.3	34.7	34.4	33.9	33.1	31.6	29.1	26.6	24.7	21.5	18.5	26.0
28.0	31	31.4	31.4	30.7	29.9	29.2	27.6	24.8	23.4	20.2	17.8	28.0
30.0	28.2	28.5	28.8	28.4	27.8	26.9	25.8	23.6	22.2	19.4	17.1	30.0
32.0	25.7	26.1	26.4	26.2	25.8	25.1	23.7	22.4	20.8	18.7	16.4	32.0
34.0	23.6	23.9	24.2	24.2	24	23	22.3	20.9	19.6	18	15.7	34.0
36.0	18.5	21.9	22.2	22.2	22.1	21.6	20.8	19.9	18.6	17.3	15.2	36.0
38.0		19.9	20.3	20.2	20.2	19.9	19.4	18.4	17.7	16.4	14.5	38.0
40.0		17.7	18.5	18.5	18.4	18.1	18.1	17.2	16.6	15.7	14.2	40.0
42.0		10.3	16.9	16.9	16.8	16.5	16.8	15.6	15.7	14.3	13.7	42.0
44.0			15.4	15.4	15.3	15.1	15.3	14.1	14.4	12.8	13	44.0
46.0			11.7	14.1	14.1	13.7	14	12.8	13	11.5	11.8	46.0
48.0				12.9	12.8	12.5	12.8	11.7	11.9	10.3	10.5	48.0
50.0				11.6	11.8	11.4	11.7	10.6	10.8	9.3	9.5	50.0
52.0				4.3	10.7	10.4	10.7	9.6	9.8	8.3	8.5	52.0
54.0					9.9	9.5	9.8	8.7	8.9	7.3	7.6	54.0
56.0					7.2	8.7	9	7.8	8.1	6.5	6.7	56.0
58.0						7.8	8.2	7	7.3	5.7	5.9	58.0
60.0						7.1	7.4	6.3	6.5	5	5.2	60.0
62.0						1.6	6.8	5.6	5.8	4.4	4.5	62.0
64.0							6.1	5	5.2	3.7	3.9	64.0
66.0							3.7	4.4	4.6	3.1	3.3	66.0
68.0								3.8	4.1	2.6	2.7	68.0
70.0								3.3	3.6	2	2.2	70.0
72.0									3.1	1.5	1.7	72.0
74.0									2.5	1.1	1.3	74.0
76.0									1.5			76.0

OPERATING RANGE - Telescopic Boom + Fixed Jib (TJ)

起升高度曲線 - 主臂 + 副臂



LOAD CHART - Telescopic Boom + Fixed Jib (TJ)

性能表 - 主臂 + 副臂

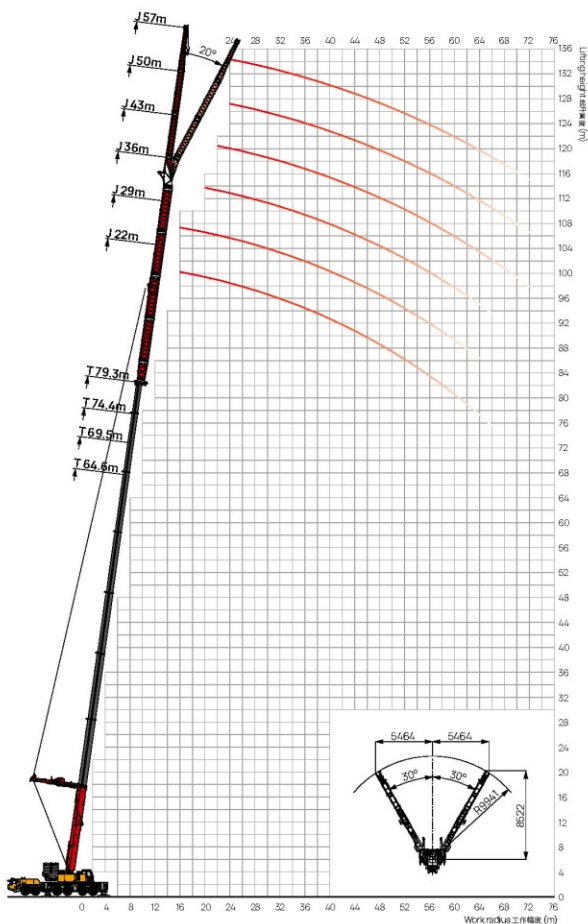


Unit: t

14.0 16.0 18.0 20.0 22.0 24.0 26.0 28.0 30.0 32.0 34.0 36.0 38.0 40.0 42.0 44.0 46.0 48.0 50.0 52.0 54.0 56.0 58.0 60.0 62.0 64.0 66.0 68.0 70.0 72.0 74.0 76.0	74.4				79.3				14.0 16.0 18.0 20.0 22.0 24.0 26.0 28.0 30.0 32.0 34.0 36.0 38.0 40.0 42.0 44.0 46.0 48.0 50.0 52.0 54.0 56.0 58.0 60.0 62.0 64.0 66.0 68.0 70.0 72.0 74.0 76.0
	15	22	29	36	15	22	29	36	
14.0									14.0
16.0									16.0
18.0									18.0
20.0									20.0
22.0									22.0
24.0	9.0				7.4				24.0
26.0	8.8	6.9			7.3	5.7			26.0
28.0	8.5	6.8	5.1		7.2	5.7	4.3		28.0
30.0	8.0	6.7	5.0		7.1	5.7	4.2		30.0
32.0	7.8	6.7	4.9	3.5	7.0	5.7	4.1	3.2	32.0
34.0	7.6	6.5	4.8	3.5	6.9	5.7	4.0	3.2	34.0
36.0	7.4	6.4	4.7	3.5	6.7	5.7	3.9	3.2	36.0
38.0	7.1	6.3	4.6	3.5	6.5	5.7	3.8	3.2	38.0
40.0	6.9	6.2	4.5	3.5	6.3	5.7	3.7	3.2	40.0
42.0	6.7	6.1	4.4	3.5	6.1	5.7	3.6	3.2	42.0
44.0	6.4	6.0	4.3	3.5	5.9	5.7	3.5	3.2	44.0
46.0	6.2	5.9	4.2	3.5	5.6	5.5	3.4	3.2	46.0
48.0	6.0	5.7	4.1	3.3	5.4	5.2	3.3	3.0	48.0
50.0	5.7	5.2	4.0	3.2	5.2	4.7	3.2	2.9	50.0
52.0	5.5	4.9	3.9	3.1	5.0	4.4	3.1	2.8	52.0
54.0	5.3	4.6	3.6	3.0	4.8	4.2	3.0	2.7	54.0
56.0	5.1	4.4	3.5	2.9	4.6	4.0	2.9	2.6	56.0
58.0	4.8	4.2	3.4	2.8	4.4	3.8	2.8	2.6	58.0
60.0	4.5	4.0	3.3	2.7	4.2	3.6	2.7	2.5	60.0
62.0	4.3	3.6	3.2	2.6	4.0	3.3	2.6	2.4	62.0
64.0	3.7	3.4	3.1	2.4	3.5	3.1	2.5	2.2	64.0
66.0	3.3	3.1	2.9	2.2	3.1	2.9	2.4	2.0	66.0
68.0	2.5	2.8	2.5	2.1	2.7	2.8	2.3	1.9	68.0
70.0	1.5	2.3	2.4	2.0	1.9	2.3	2.2	1.8	70.0
72.0		1.8	2.1	1.8		2.0	2.0	1.6	72.0
74.0		1.1	1.4	1.6		1.4	1.6	1.5	74.0
76.0			1.0						76.0

OPERATING RANGE - Telescopic Boom + Fixed Jib + Superlift Device (TSJ)

起升高度曲線 - 主臂 + 副臂 + 超起



LOAD CHART - Telescopic Boom + Fixed Jib + Superlift Device (TSJ)

性能表 - 主臂 + 副臂 + 超起



Unit: t

m	64.6						69.5						m
	22	29	36	43	50	57	22	29	36	43	50	57	
14.0	20.3						18.4						14.0
16.0	19.4	15.2					17.6	13.8					16.0
18.0	18.5	15.2					16.8	13.8					18.0
20.0	17.5	14.5	10.5				15.9	13.2	9.2				20.0
22.0	16.7	14.1	9.9	6.5			15.1	12.8	8.6	6.2			22.0
24.0	16.1	13.7	9.2	6.4	5.1	3.6	14.7	12.5	8.4	6.1	4.9	3.4	24.0
26.0	15.2	13.2	8.6	6.3	5.0	3.5	13.9	12.0	7.8	6.0	4.8	3.4	26.0
28.0	14.7	12.5	7.9	6.2	4.9	3.4	13.4	11.4	7.2	5.9	4.7	3.3	28.0
30.0	13.8	11.9	7.6	6.1	4.8	3.4	12.6	10.8	6.9	5.8	4.6	3.2	30.0
32.0	13.3	11.2	7.4	6.0	4.7	3.3	12.1	10.2	6.7	5.7	4.5	3.2	32.0
34.0	12.7	10.5	7.1	5.9	4.6	3.2	11.6	9.6	6.5	5.6	4.4	3.1	34.0
36.0	12.0	9.9	6.9	5.8	4.5	3.2	10.9	9.0	6.2	5.5	4.3	3.0	36.0
38.0	11.1	9.2	6.6	5.7	4.4	3.1	10.1	8.4	6.0	5.4	4.2	2.9	38.0
40.0	9.9	8.6	6.2	5.6	4.3	3.0	9.0	7.8	5.6	5.3	4.1	2.9	40.0
42.0	8.8	7.9	5.9	5.5	4.2	2.9	8.0	7.2	5.4	5.2	4.0	2.8	42.0
44.0	7.9	7.4	5.5	5.2	4.1	2.9	7.2	6.7	5.0	4.8	3.8	2.7	44.0
46.0	7.0	6.9	5.3	4.9	4.0	2.8	6.3	6.2	4.8	4.4	3.8	2.7	46.0
48.0	6.2	6.6	5.0	4.6	3.9	2.7	5.6	6.0	4.6	4.2	3.8	2.7	48.0
50.0	5.4	5.9	4.7	4.3	3.8	2.7	5.0	5.4	4.3	3.9	3.8	2.7	50.0
52.0	4.8	5.3	4.5	4.2	3.7	2.6	4.4	4.8	4.1	3.8	3.8	2.7	52.0
54.0	4.1	4.5	4.2	3.9	3.6	2.5	3.8	4.1	3.8	3.5	3.8	2.7	54.0
56.0	3.6	4.0	4.0	3.6	3.5	2.5	3.3	3.6	3.6	3.3	3.8	2.7	56.0
58.0	3.0	3.3	3.6	3.4	3.4	2.4	2.8	3.0	3.2	3.1	3.8	2.7	58.0
60.0	2.7	2.9	3.3	3.3	3.3	2.3	2.5	2.6	3.0	3.0	3.8	2.7	60.0
62.0	2.5	2.5	3.0	3.2	3.3	2.3	2.3	2.3	2.8	2.9	3.6	2.5	62.0
64.0	2.2	2.2	2.8	3.2	3.3	2.3	2.1	2.0	2.5	2.9	3.4	2.4	64.0
66.0	1.6		2.6	3.2	3.3	2.3	1.6		2.4	2.9	3.2	2.2	66.0
68.0			2.4	2.7	3.0	2.2			2.2	2.6	2.8	2.2	68.0
70.0			2.2	2.4	2.4	2.2			2.0	2.2	2.3	2.0	70.0
72.0				1.8	1.9	1.4				1.7	1.8	1.3	72.0
74.0				1.5	1.5	1.3				1.1	1.3	1.1	74.0

LOAD CHART - Telescopic Boom + Fixed Jib + Superlift Device (TSJ)

性能表 - 主臂 + 副臂 + 超起
















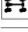







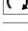

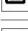
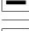
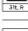
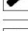
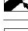
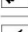
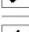
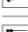
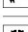
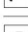
















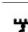
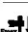



















Unit: t

m	74.4						79.3						m
	22	29	36	43	50	57	22	29	36	43	50	57	
14.0	17.2												14.0
16.0	16.4	12.5					15.3	11.4					16.0
18.0	15.9	12.5					14.4	11.4					18.0
20.0	15.2	12.0	8.7				12.7	10.9	7.9				20.0
22.0	14.6	11.7	8.2	5.9			12.1	10.6	7.4	5.5			22.0
24.0	14.0	11.3	7.6	5.8	4.7	3.3	11.5	10.3	6.9	5.4	4.3	3.0	24.0
26.0	13.4	10.9	7.1	5.7	4.6	3.2	11.0	9.9	6.4	5.3	4.2	2.9	26.0
28.0	12.6	10.3	6.5	5.6	4.5	3.2	10.5	9.4	5.9	5.2	4.1	2.9	28.0
30.0	12.1	9.8	6.3	5.5	4.4	3.1	10.2	8.9	5.7	5.1	4.0	2.8	30.0
32.0	11.6	9.3	6.1	5.4	4.3	3.0	9.8	8.4	5.5	5.0	3.9	2.7	32.0
34.0	11.2	8.7	5.9	5.3	4.2	2.9	9.5	7.9	5.3	4.9	3.8	2.7	34.0
36.0	10.8	8.2	5.7	5.2	4.1	2.9	9.2	7.4	5.1	4.8	3.7	2.6	36.0
38.0	10.3	7.6	5.4	5.1	4.0	2.8	9.0	6.9	5.0	4.7	3.6	2.5	38.0
40.0	9.3	7.1	5.1	4.9	3.9	2.7	8.6	6.4	4.7	4.6	3.5	2.5	40.0
42.0	8.3	6.5	4.9	4.7	3.8	2.7	7.7	5.9	4.5	4.2	3.4	2.4	42.0
44.0	7.4	6.1	4.6	4.4	3.7	2.6	6.9	5.5	4.2	4.0	3.3	2.3	44.0
46.0	6.6	5.7	4.4	4.0	3.6	2.5	6.1	5.1	4.0	3.7	3.2	2.2	46.0
48.0	5.8	5.4	4.1	3.8	3.5	2.5	5.4	5.0	3.8	3.5	3.1	2.2	48.0
50.0	5.2	4.9	3.9	3.6	3.5	2.5	4.9	4.5	3.6	3.2	3.1	2.2	50.0
52.0	4.6	4.4	3.7	3.4	3.5	2.5	4.3	4.0	3.4	3.1	3.1	2.2	52.0
54.0	4.1	3.7	3.5	3.2	3.5	2.5	3.8	3.4	3.2	2.9	3.1	2.2	54.0
56.0	3.5	3.3	3.3	3.0	3.5	2.5	3.3	3.0	3.0	2.7	3.1	2.2	56.0
58.0	3.0	2.7	2.9	2.9	3.5	2.5	2.8	2.5	2.7	2.6	3.0	2.1	58.0
60.0	2.7	2.4	2.7	2.7	3.5	2.5	2.6	2.2	2.5	2.5	2.9	2.0	60.0
62.0	2.5	2.1	2.5	2.6	3.2	2.2	2.4	1.9	2.3	2.4	2.8	2.0	62.0
64.0	2.3	1.9	2.3	2.6	3.0	2.1	2.2	1.7	2.1	2.4	2.7	1.9	64.0
66.0	1.9		2.2	2.6	3.0	2.1	2.0		2.0	2.4	2.6	1.8	66.0
68.0			2.1	2.5	2.8	2.0				2.3	2.5	1.8	68.0
70.0			1.9	2.1	2.3	1.8				2.0	2.4	1.7	70.0
72.0				1.6	1.7	1.2				1.5	1.5	1.1	72.0
74.0													74.0

ICON DESCRIPTION

圖標說明

 Max. lifting capacity 最大起重重量	 Max. boom length 最大主臂長	 Max. lifting radius 最大吊載轉角	 Max. lifting height 最大吊載高度	 Driver's cab 駕駛室
 Carrier frame 車架	 Engine 發動機	 Transmission 變速箱	 Transfer case 分動箱	 Axle 車橋
 Outrigger 支腿	 Slewing platform 轉臺	 Suspension system 懸掛	 Steering 轉向	 Tires/Tire size 輪胎/輪胎尺寸
 Wheel formula 輪胎模式	 Transmission shaft 傳動軸	 Brake system 制動系統	 Electrical system 電氣系統	 Hydraulic system 液壓系統
 Operator's cab 機房室	 Control system 控制系統	 Hoist 起升機構	 Slewing 旋轉機構	 Safety equipment 安全裝置
 Load moment indicator 力矩限制器	 Counterweight 配重	 CW rearward positioned 配重後移	 Boom & telescoping system 主臂	 Luffing system 變幅系統
 Jib 副臂	 Superlift device 超起	 Wind power jib 風能副臂	 Luffing jib 超臂	 Auxiliary jib 副臂
 Boom extension 主臂延伸臂	 Auxiliary boom nose 臂尖滑輪	 Rear storage box 後部儲物箱	 Optional equipment at extra fees 選配	 Motor 電機
 Power battery 動力電池	 Axle load 軸荷	 Weight 重量	 Number of sheaves 鋼索數量	 Min. travel speed 最小行駛速度
 Max. gradesability 最大爬坡度	 Gear 檔位	 Onroad gear 路面檔	 Crawl speed 爬車速度	 Hook 吊鉤
 Main hook 主鉤	 Auxiliary hook 副鉤	 Rope rate 倍率	 Max. supporting forces 最大支撐力	 Outrigger pads 支腿墊
 Operations jack 垂直支腿	 Outrigger beam 水平支腿	 Front outrigger 前支腿	 Rear outrigger 後支腿	 Hook weight 吊鉤重量
 Operations 工作模式	 Max. single line lifting speed (empty load) 單繩速起(空載)	 Rope diameter 鋼絲繩直徑	 Rope length 鋼絲繩長度	 Max. single line pull 最大單繩拉力
 Main winch 主卷揚	 Auxiliary winch 副卷揚	 Full luffing up/down time of boom 主臂抬落轉時間	 Full extension/retraction time of boom 主臂伸縮時間	 Anemometer 風速儀
 Spare tire 備胎				

SANY OVERSEAS SERVICE

三一海外服務

**GLOBAL SUPPORT
ANYTIME ANYWHERE
NO MORE WAITING**

900+



Overseas service centers
海外服務中心

3500+



Professional technical
service engineers
專業技術服務

365×24



Support
全時服務

Service Center

Tel: +86 4006098318

Mail: CRD@sany.com.cn

WhatsApp: +86 19908478631 (Only WhatsApp)

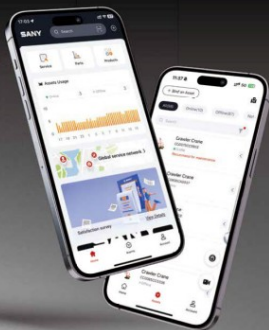
 **My SANY**

On-demand professional equipment repair services available anytime, anywhere, ensuring rapid response and efficient solutions.

隨時一鍵呼叫專業設備維修服務，快速響應，高效解決。



Download MySANY for a comprehensive, all-in-one experience!





SANY Mobile Crane and Tower Crane Industrial Park

No.168 Jinzhou Avenue, Jinzhou Development Zone, Changsha City, Hunan Province, P.R. China Zip 410600

SANY Crawler Crane Industrial Park

No. 2188 Daishan Road, Wuxing District, Huzhou City, Zhejiang Province, P.R. China Zip 313028

Consulting sanycrane@sanygroup.com (Crane BU) / crd@sany.com.cn (HQ)

After-sales Service 0086-400 609 8318 (Overseas)

Reminder:

Any change in the technical parameters and configuration due to product modification or upgrade may occur without prior notice. The machine in the picture may include additional equipment. This brochure is for reference only, and goods in kind shall prevail.

Copyright © SANY. No part of this brochure may be copied or used for any purpose without written approval from SANY.

© Version 2025-11-12

三一輪式、塔式起重機產業園：中國湖南長沙金洲開發區金洲大道168號 郵編：410600

三一履帶起重機產業園：中國浙江湖州市吳興區鳳山路2188號 郵編：313028

查詢：sanycrane@sanygroup.com(起重事業部) / crd@sany.com.cn(國際總部)

售後服務：0086-400 609 8318(海外)

溫馨提示：

由於技術不斷更新，技術參數及配置如有更改，恕不另行通知。圖中機器可能包括附加設備，本圖冊僅供參考，以實物為準。
版權為三一所有，未經三一書面許可，本圖冊任何內容不得被複製用於任何目的。

© 2025年11月12日版



Contact SANY Group



Follow SANY Group